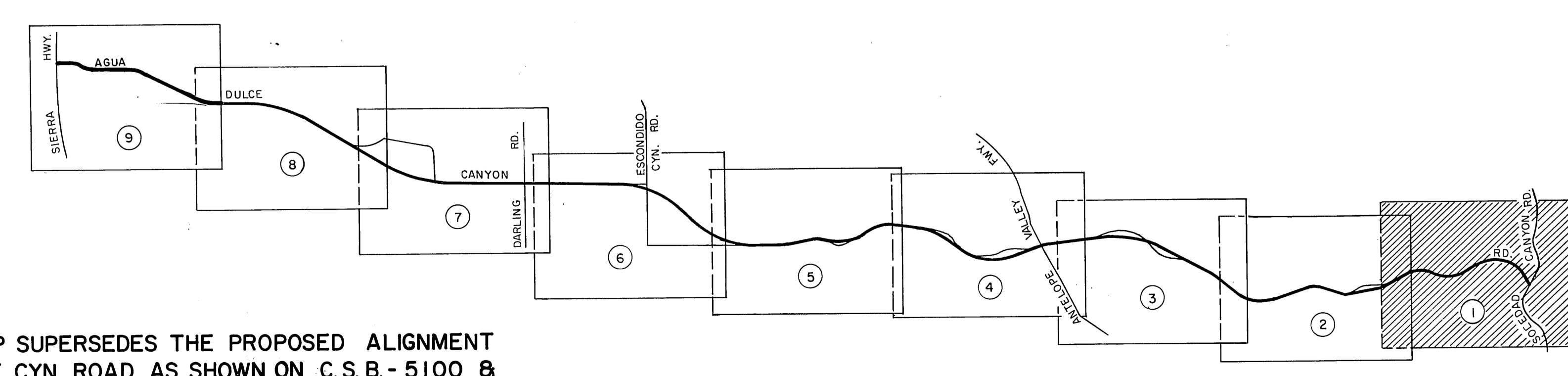
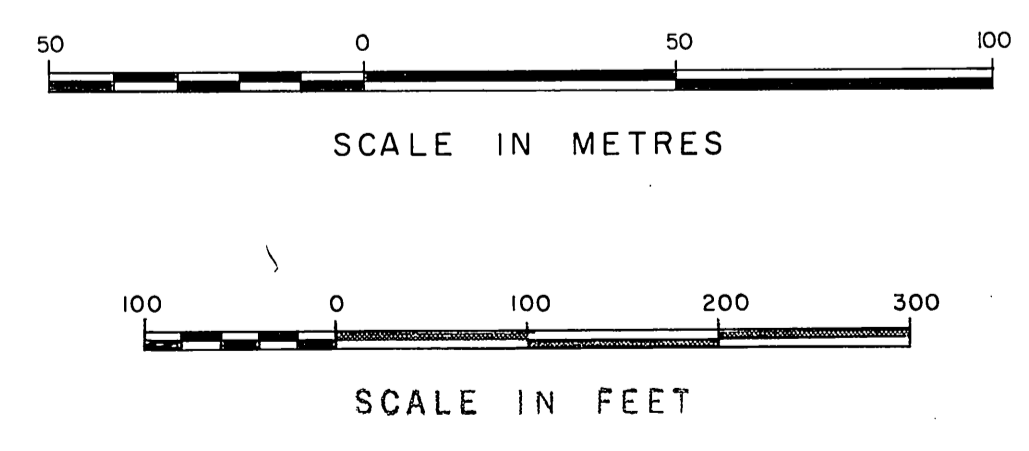


SECTION 10

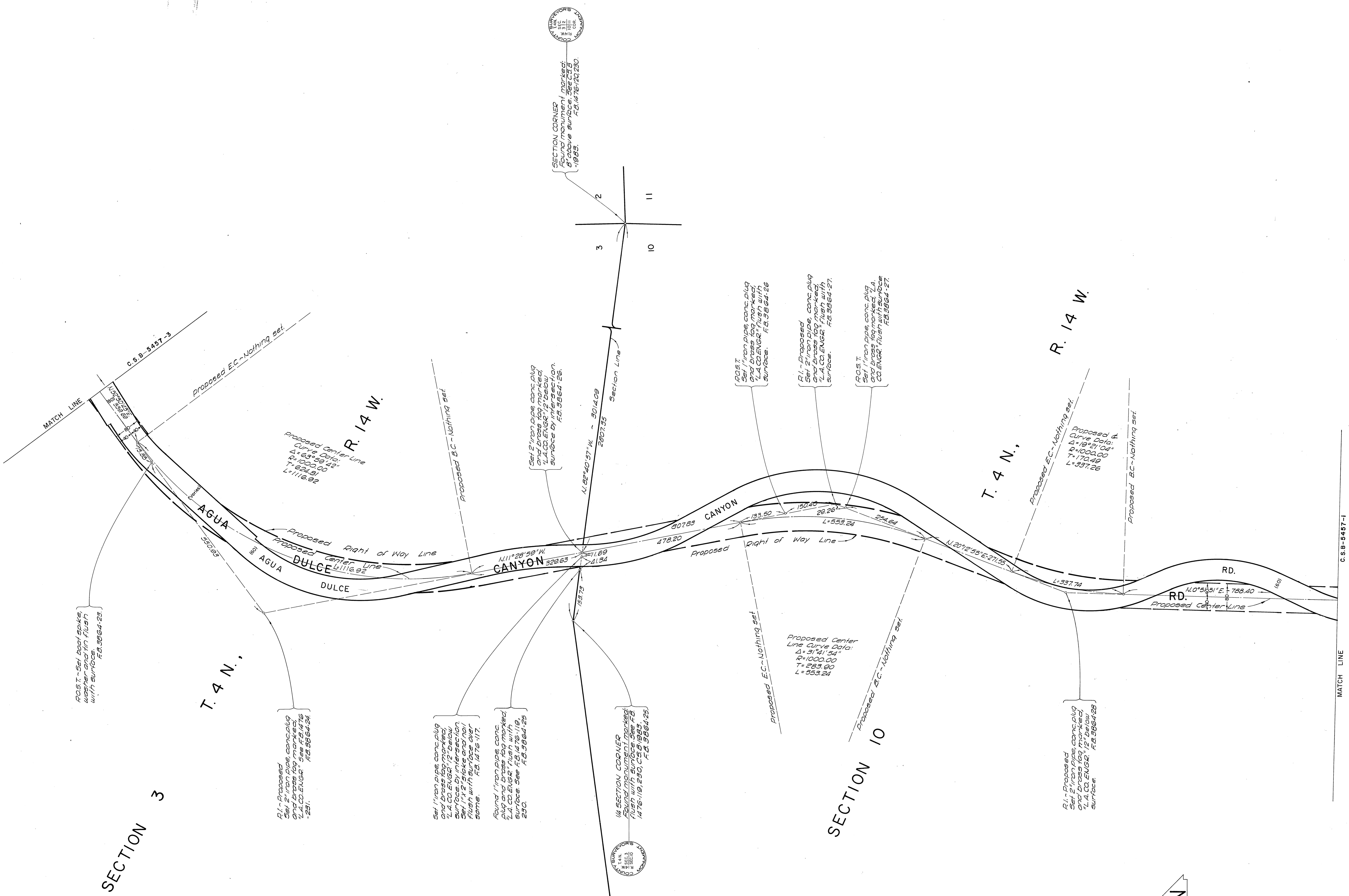


NOTE:  
 THIS MAP SUPERSEDES THE PROPOSED ALIGNMENT OF AGUA DULCE CYN. ROAD AS SHOWN ON C.S.B.-5100 & C.S.B.-5422. SEE I.E.C. MINUTES DATED 11-3-1966, 10-25-1976, 10-22-1981 & 2-24-1983.  
 ALSO SHOWN IS THE RECLASSIFICATION FROM A MAJOR HIGHWAY TO A SECONDARY HIGHWAY AS SHOWN ON THE LOS ANGELES COUNTY GENERAL PLAN NOVEMBER, 1980.

INDEX MAP NOT TO SCALE

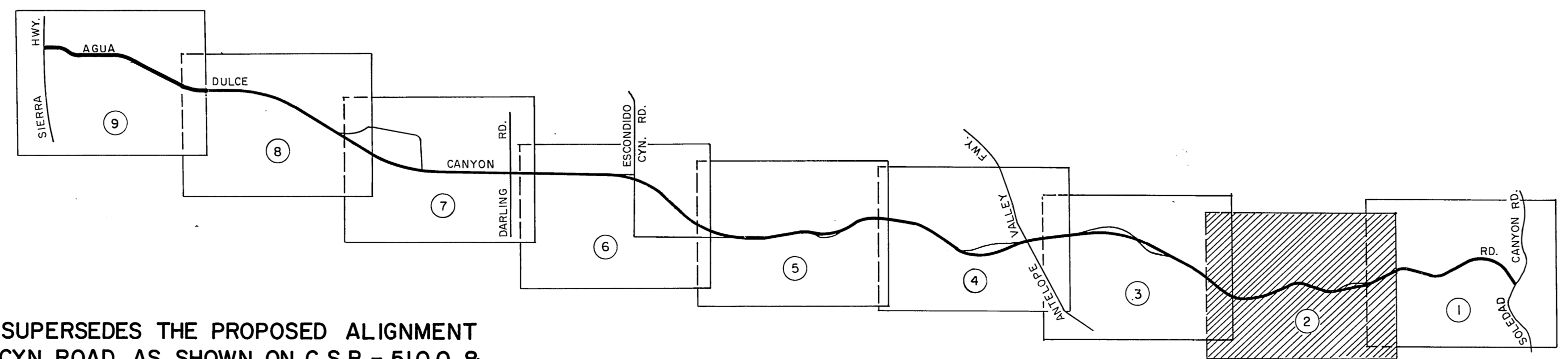


|   |   |  |   |
|---|---|--|---|
| COUNTY OF LOS ANGELES<br>DEPARTMENT OF<br>COUNTY ENGINEER-FACILITIES<br>STEPHEN J. KOONCE-COUNTY ENGINEER<br>PREPARED BY<br>SURVEY DIVISION<br>RICHARD W. MITCHELL<br>ASSISTANT COUNTY ENGINEER<br>SURVEYED BY S. HALISCKY, L.V. SMITH<br>CHECKED BY J.A. CHURCH, D. SAPPPELL<br>DRAWN BY B. GOINS & S. HAQUE | ALIGNMENT MAP OF  |  | COUNTY SURVEYOR'S MAP NO.<br><b>B-5457</b><br>SHEET 1 OF 9 SHEETS<br>FILED <i>1980</i> 19 <i>80</i><br><i>Richard W. Mitchell</i><br>COUNTY ENGINEER<br>SURVEYED<br>1963, 1971, 1983<br>REFERENCE<br>F.B. 1476 F.B. 4342<br>F.B. 3864 F.B. 4482<br>JOB NUMBER INDEX MAP NO.<br>0222.37 78 |
|   | AGUA DULCE CYN. RD.<br>FROM<br>SOLEDAD CYN. RD.<br>TO<br>SIERRA HWY.  |  |   |
|   | BASIS OF BEARINGS<br>THE BEARING OF THE S'LY LINE OF SECTION 14<br>(N. 89°46'45"W.) T. 5 N., R. 14 W. PER C.S.B-1312-1. |  |   |
|   |   |  |   |



SECTION 3

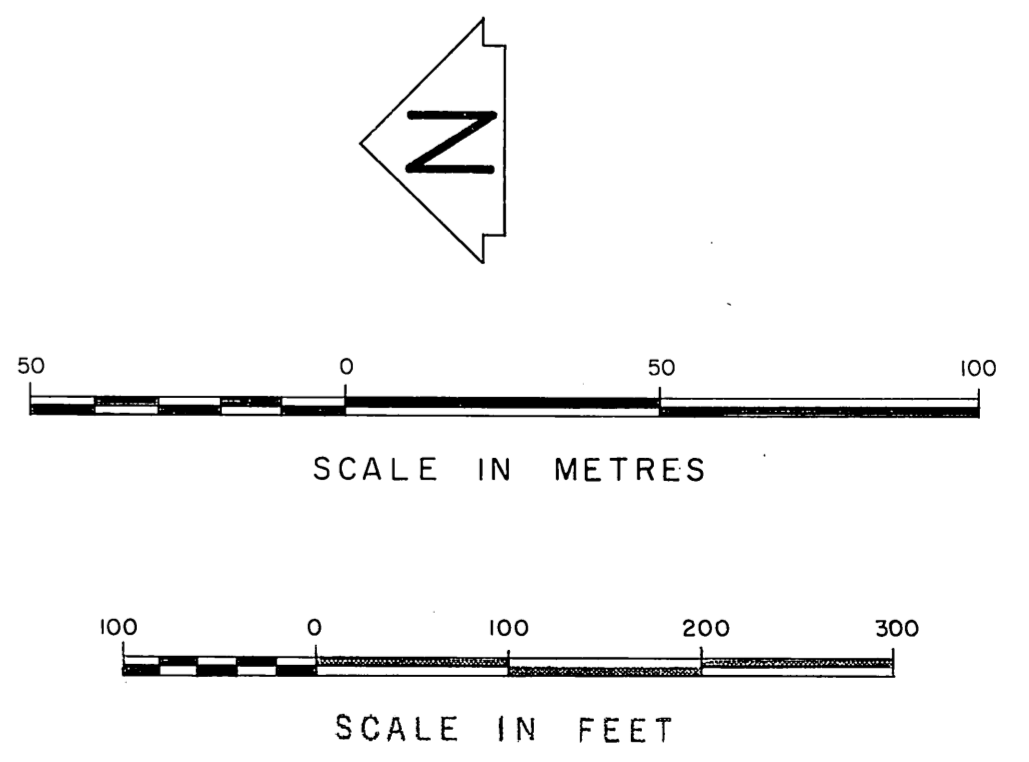
SECTION 10



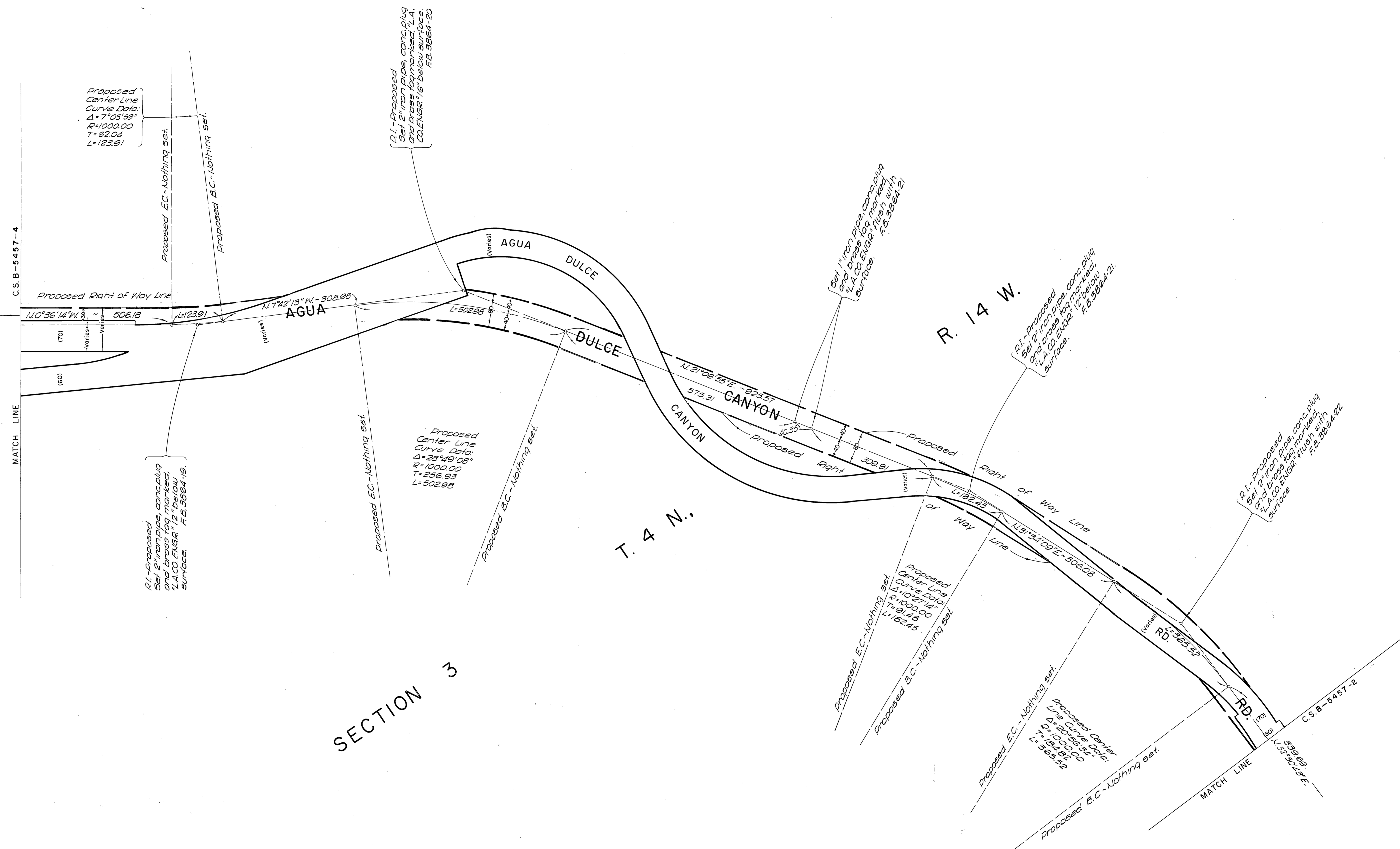
NOTE: THIS MAP SUPERSEDES THE PROPOSED ALIGNMENT OF AGUA DULCE CYN. ROAD AS SHOWN ON C.S.B. - 5100 & C.S.B.-5422. SEE I.E.C. MINUTES DATED 11-3-1966, 10-25-1976, 10-22-1981, & 2-24-1983.

ALSO SHOWN IS THE RECLASSIFICATION FROM A MAJOR HIGHWAY TO A SECONDARY HIGHWAY AS SHOWN ON THE LOS ANGELES COUNTY GENERAL PLAN NOVEMBER, 1980.

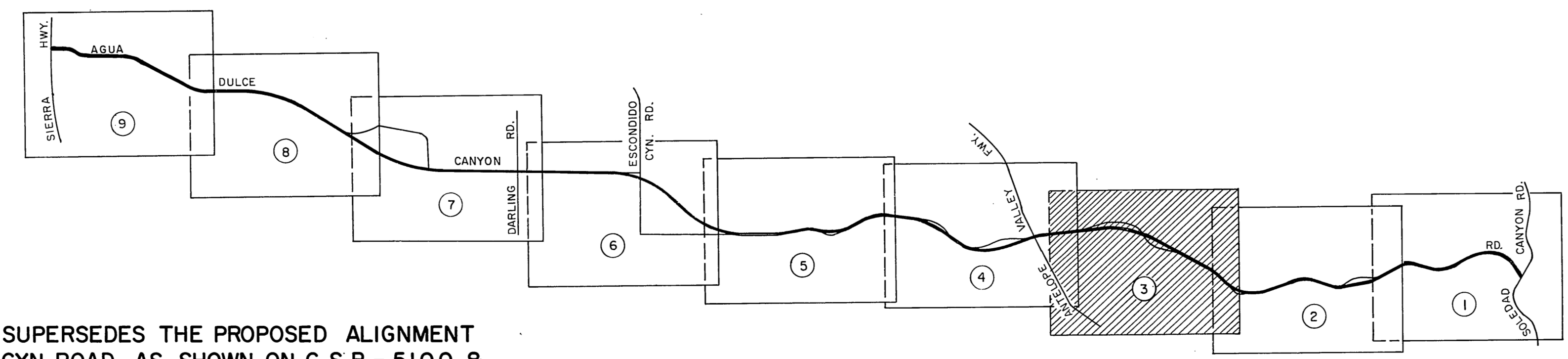
INDEX MAP NOT TO SCALE



|  |  |   |  |   |  |                     |  |
|--|--|---|--|---|--|---------------------|--|
| COUNTY OF LOS ANGELES<br>DEPARTMENT OF<br>COUNTY ENGINEER-FACILITIES<br>STEPHEN J. MOONCE-COUNTY ENGINEER                        |  | ALIGNMENT MAP OF<br><b>AGUA DULCE CYN. RD.</b><br>FROM<br><b>SOLEDAD CYN. RD.</b><br>TO<br><b>SIERRA HWY.</b>             |  | COUNTY SURVEYOR'S MAP NO.<br><b>B-5457</b>  |  | REVISION            |  |
| PREPARED BY<br>SURVEY DIVISION<br>RICHARD J. MITCHELL<br>ASSISTANT DEPUTY COUNTY ENGINEER<br>SURVEYED BY S. HALLSCKY, L.V. SMITH |  | BASIC OF BEARINGS<br>THE BEARING OF THE SLY LINE OF SECTION 14<br>(N. 89° 46' 45" W.) T. 5 N., R. 14 W. PER C.S.B-1312-1. |  | SHEET 2 OF 9 SHEETS<br>FILED: January 19, 1984<br>DEPUTY SURVEYOR<br>1963, 1971, 1983 |  | NO. BY DATE         |  |
| CHECKED BY J.A. CHURCH, D. SAPPPELL<br>DRAWN BY B. GOINS, B.S. HAQUE   |  | REFERENCE<br>F.B. 4342<br>F.B. 3864<br>F.B. 4482  |  | JOB NUMBER<br>0222.37   |  | INDEX MAP NO.<br>78 |  |



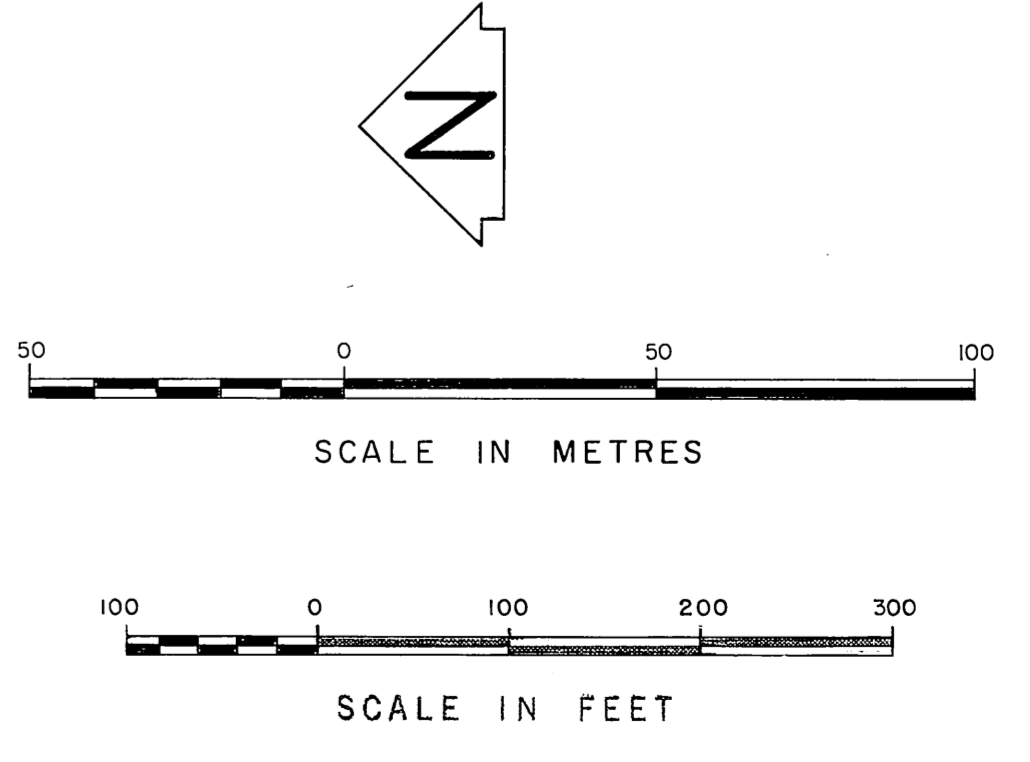
SECTION 3



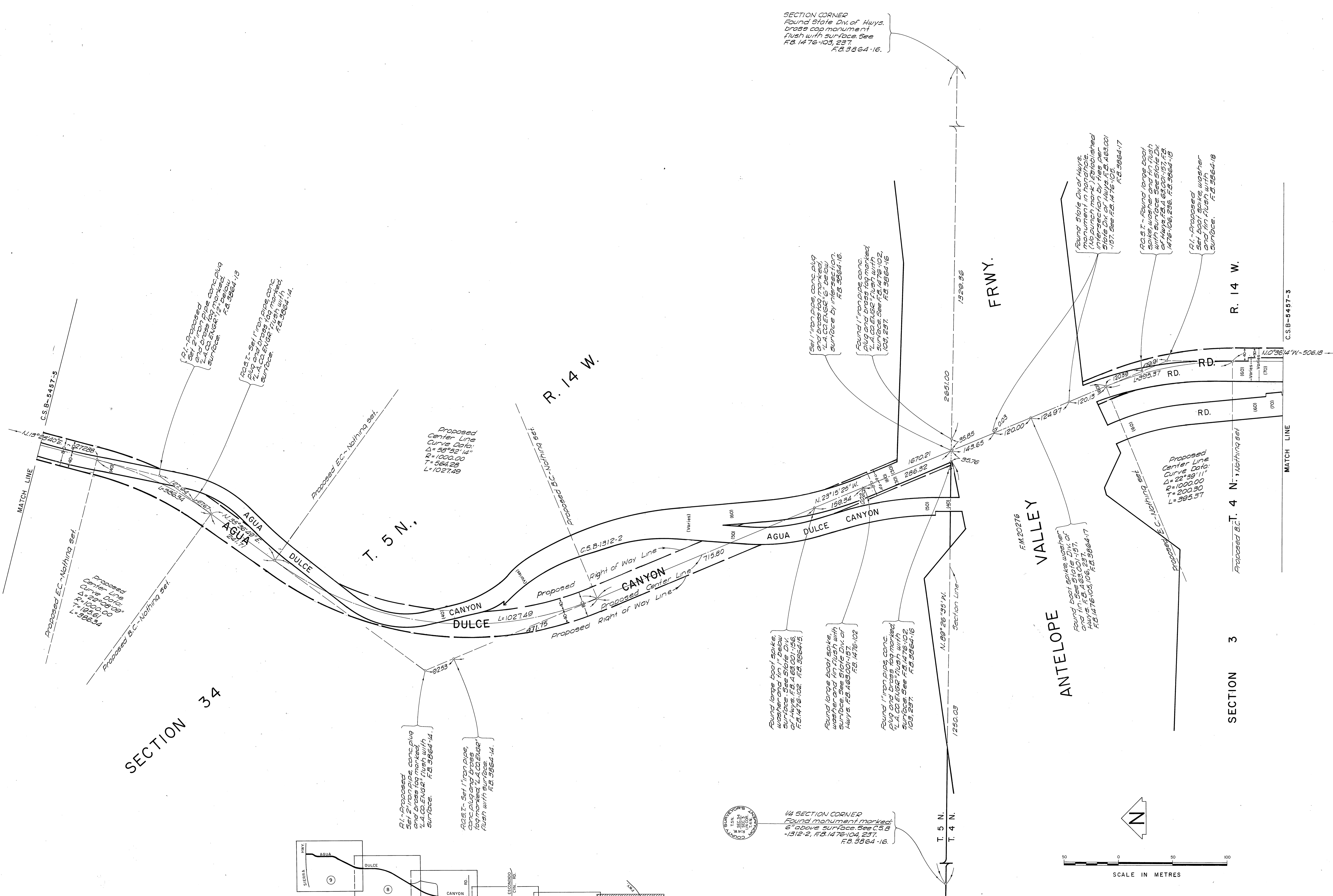
NOTE: THIS MAP SUPERSEDES THE PROPOSED ALIGNMENT OF AGUA DULCE CYN. ROAD AS SHOWN ON C.S.B.-5100 & C.S.B.-5422. SEE I.E.C. MINUTES DATED 11-3-1966, 10-25-1976, 10-22-1981, & 2-24-1983.

ALSO SHOWN IS THE RECLASSIFICATION FROM A MAJOR HIGHWAY TO A SECONDARY HIGHWAY AS SHOWN ON THE LOS ANGELES COUNTY GENERAL PLAN NOVEMBER, 1980.

INDEX MAP  
NOT TO SCALE



|   |   |  |   |                         |
|---|---|--|---|-------------------------|
| COUNTY OF LOS ANGELES<br>DEPARTMENT OF<br>COUNTY ENGINEER-FACILITIES<br>STEPHEN J. KOONCE-COUNTY ENGINEER<br>PREPARED BY<br>SURVEY DIVISION<br>RICHARD J. MITCHELL<br>ASSISTANT DEPUTY COUNTY ENGINEER<br>SURVEYED BY S. HALISCKY, L.V. SMITH<br>CHECKED BY J.A. CHURCH, D. SAPPPELL<br>DRAWN BY B. GOINS, R.S. HARUE | ALIGNMENT MAP OF<br><b>AGUA DULCE CYN. RD.</b><br>FROM<br><b>SOLEDAD CYN. RD.</b><br>TO<br><b>SIERRA HWY.</b>           |  | COUNTY SURVEYOR'S MAP NO.<br><b>B-5457</b><br>SHEET 3 OF 9 SHEETS<br>FILED: <i>January 19, 1984</i><br><i>D.P. Mitchell</i><br>DEPUTY | REVISION<br>NO. BY DATE |
|   | BASIS OF BEARINGS<br>THE BEARING OF THE S'LY LINE OF SECTION 14<br>(N. 89°46'45"W.) T. 5 N., R. 14 W. PER C.S.B-1312-1. |  | SURVEYED<br>1963, 1971, 1983  |                         |
|   |   |  | REFERENCE<br>F.B. 1476 F.B. 4342<br>F.B. 3864 F.B. 4482   |                         |
|   |   |  | JOB NUMBER<br>0.22.37   | INDEX MAP NO.<br>76     |



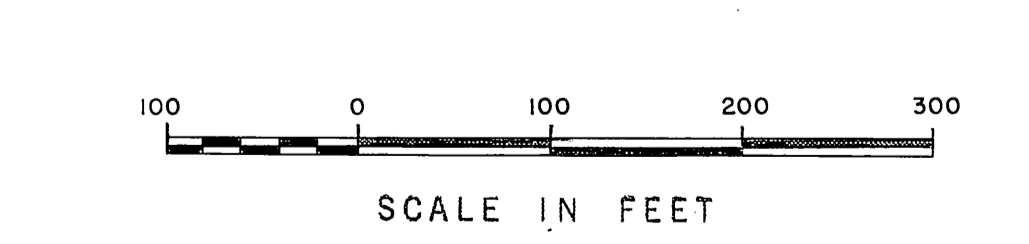
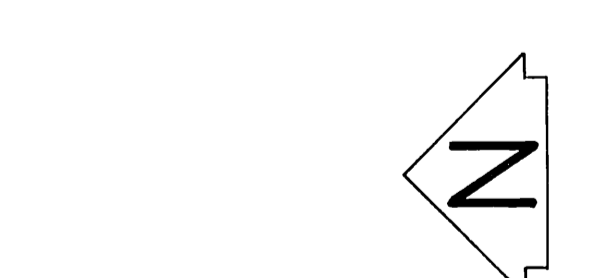
SECTION 34

SECTION 3

R. 14 W.

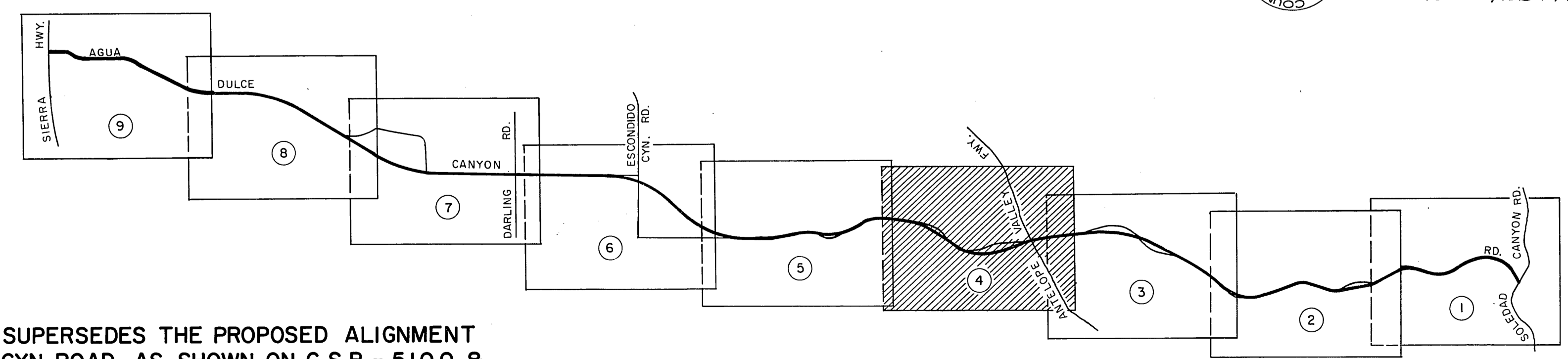
FRWY.

VALLEY ANTELOPE



NOTE: THIS MAP SUPERSEDES THE PROPOSED ALIGNMENT OF AGUA DULCE CYN. ROAD AS SHOWN ON C.S.B.-5100 & C.S.B.-5422. SEE I.E.C. MINUTES DATED II-3-1966, 10-25-1976, 10-22-1981, & 2-24-1983.  
ALSO SHOWN IS THE RECLASSIFICATION FROM A MAJOR HIGHWAY TO A SECONDARY HIGHWAY AS SHOWN ON THE LOS ANGELES COUNTY GENERAL PLAN NOVEMBER, 1980.

INDEX MAP  
NOT TO SCALE



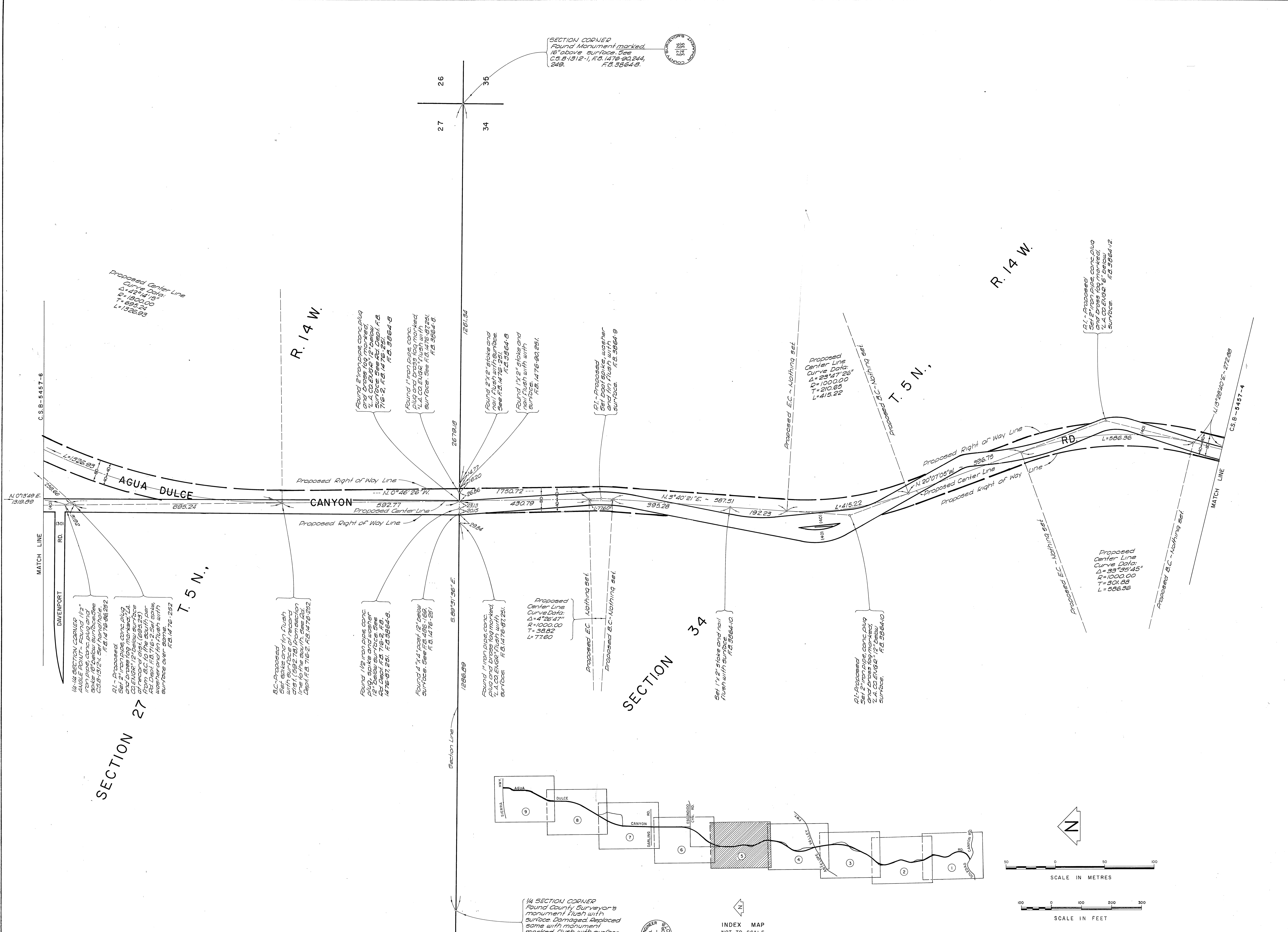
1/4 SECTION CORNER  
Found monument marked  
6" above surface See C.S.B.  
-1312-2, F.B. 1476-102, 237,  
F.B. 3864-16.

SECTION CORNER  
Found State Div. of Hwys.  
brass cap monument  
flush with surface See  
F.B. 1476-102, 237,  
F.B. 3864-16.

COUNTY OF LOS ANGELES  
DEPARTMENT OF  
COUNTY ENGINEER-FACILITIES  
STEPHEN J. KOONCE-COUNTY ENGINEER  
PREPARED BY  
SURVEY DIVISION  
RICHARD J. MITCHELL  
ASSISTANT DEPUTY COUNTY ENGINEER  
SUPERVISED BY S. HALLSICK, L.S. SMITH  
CHECKED BY J.A.L. CHURCH, D. SAPPPELL  
DRAWN BY B. GOINS & S. HAQUE

ALIGNMENT MAP OF  
**AGUA DULCE CYN. RD.**  
FROM  
**SOLEDAD CYN. RD.**  
TO  
**SIERRA HWY.**  
BASIS OF BEARINGS  
THE BEARING OF THE SLY LINE OF SECTION 14  
(N. 89°46'45" W.) T. 5 N., R. 14 W. PER C.S.B.-1312-1.

|                                 |                     |          |         |
|---------------------------------|---------------------|----------|---------|
| COUNTY SURVEYOR'S MAP NO.       |                     | REVISION |         |
| <b>B-5457</b>                   |                     | NO.      | BY DATE |
| SHEET 4 OF 9 SHEETS             |                     |          |         |
| FILED: January 19, 1984         |                     |          |         |
| SUPERVISED BY<br>R. J. MITCHELL |                     |          |         |
| 1963, 1971, 1983                |                     |          |         |
| REFERENCE                       | F.B. 4342           |          |         |
| F.B. 3864                       | F.B. 4482           |          |         |
| JOB NUMBER<br>0222.37           | INDEX MAP NO.<br>78 |          |         |



SECTION CORNER  
Found Monument marked  
16" above surface. See  
C.S.B. 1312-1, F.B. 1476-20, 244,  
249. F.B. 3864-B.

Proposed Center Line  
Curve Data:  
 $\Delta = 42^{\circ}14'16"$   
 $R = 1000.00$   
 $T = 695.24$   
 $L = 1326.93$

Proposed  
Center Line  
Curve Data:  
 $\Delta = 23^{\circ}47'26"$   
 $R = 1000.00$   
 $T = 210.85$   
 $L = 415.22$

Proposed  
Center Line  
Curve Data:  
 $\Delta = 33^{\circ}35'45"$   
 $R = 1000.00$   
 $T = 301.89$   
 $L = 586.36$

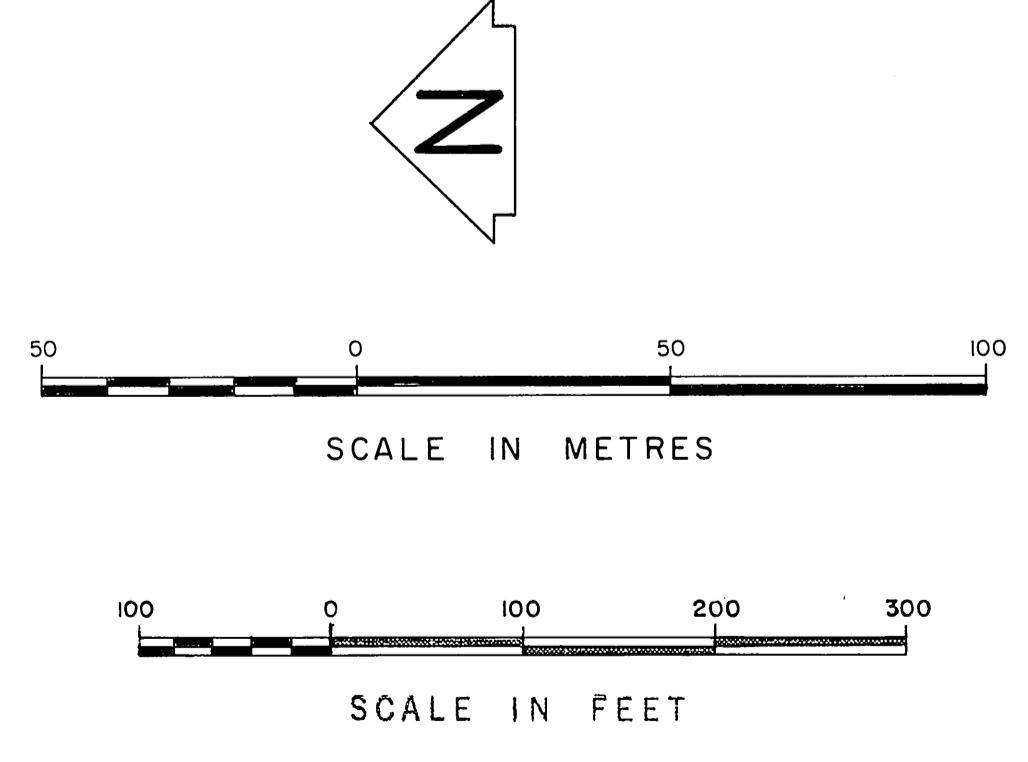
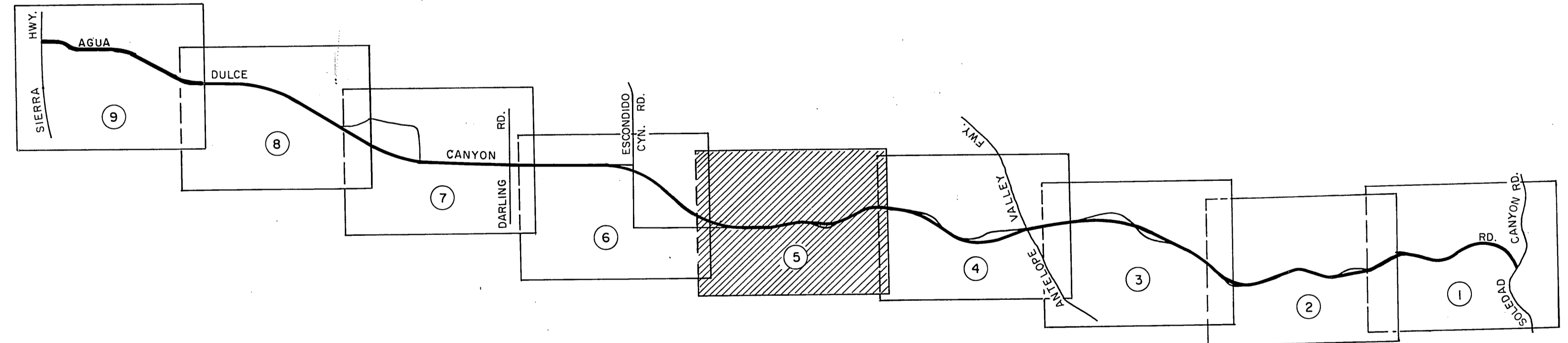
Proposed  
Center Line  
Curve Data:  
 $\Delta = 4^{\circ}26'47"$   
 $R = 1000.00$   
 $T = 38.52$   
 $L = 77.60$

Set 1 1/2" stake and nail  
flush with surface  
F.B. 3864-10

SECTION 27  
T. 5 N.

SECTION 34

1/4 SECTION CORNER  
Found County Surveyor's  
monument flush with  
surface. Damaged. Replaced  
same with monument  
marked flush with surface  
by trees per F.B. 1476-249, 250,  
F.B. 3864-7.



NOTE:  
THIS MAP SUPERSEDES THE PROPOSED ALIGNMENT  
OF AGUA DULCE CYN. ROAD AS SHOWN ON C.S.B.- 5100 &  
C.S.B.-5422. SEE I.E.C. MINUTES DATED 11-3-1966, 10-25-1976,  
10-22-1981, & 2-24-1983.  
ALSO SHOWN IS THE RECLASSIFICATION FROM A MAJOR  
HIGHWAY TO A SECONDARY HIGHWAY AS SHOWN ON THE  
LOS ANGELES COUNTY GENERAL PLAN NOVEMBER, 1980.

|   |   |  |  |  |                         |
|---|---|--|--|--|-------------------------|
| COUNTY OF LOS ANGELES<br>DEPARTMENT OF<br>COUNTY ENGINEER-FACILITIES<br>STEPHEN J. KOONCE-COUNTY ENGINEER<br>PREPARED BY<br>SURVEY DIVISION<br>RICHARD J. MITCHELL<br>ASSISTANT DEPUTY COUNTY ENGINEER<br>SURVEYED BY S. HALLISCKY, L.V. SMITH<br>CHECKED BY J.A. CHURCH, D. SAPPPELL<br>DRAWN BY B. GOINS & S. HAQUE | ALIGNMENT MAP OF<br><b>AGUA DULCE CYN. RD.</b><br>FROM<br><b>SOLEDAD CYN. RD.</b><br>TO<br><b>SIERRA HWY.</b>           |  | COUNTY SURVEYOR'S MAP NO.<br><b>B-5457</b><br>SHEET 5 OF 9 SHEETS<br>FILED: January 19, 1983<br><i>[Signature]</i><br>DEPUTY<br>SURVEYOR<br>1963, 1971, 1983 |  | REVISION<br>NO. BY DATE |
|   | BASIS OF BEARINGS<br>THE BEARING OF THE S'LY LINE OF SECTION 14<br>(N. 89°46'45"W.) T. 5 N., R. 14 W. PER C.S.B-1312-1. |  | REFERENCE<br>F.B. 1476<br>F.B. 3864  | F.B. 4342<br>F.B. 4482<br>JOB NUMBER<br>0222.37<br>INDEX MAP NO.<br>78 |                         |

SECTION 26

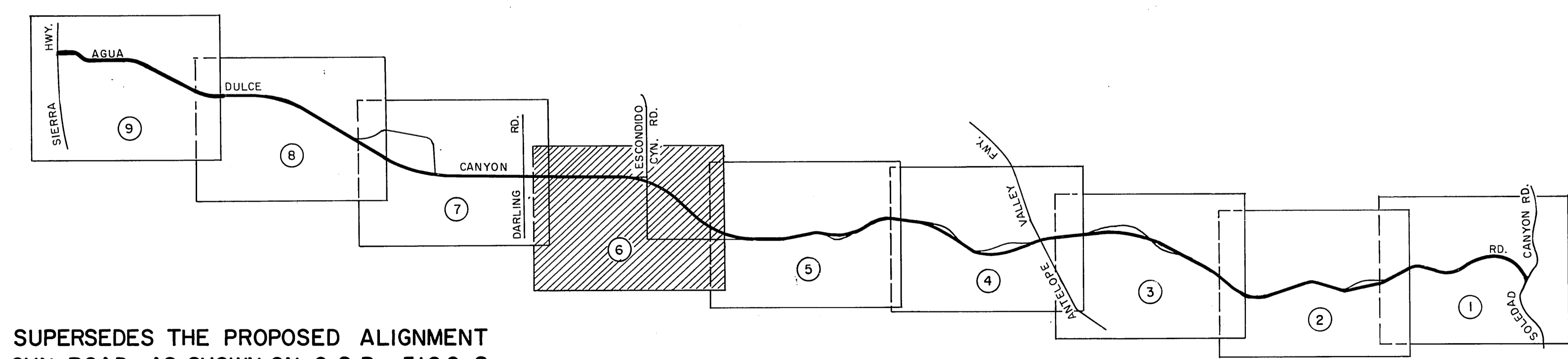
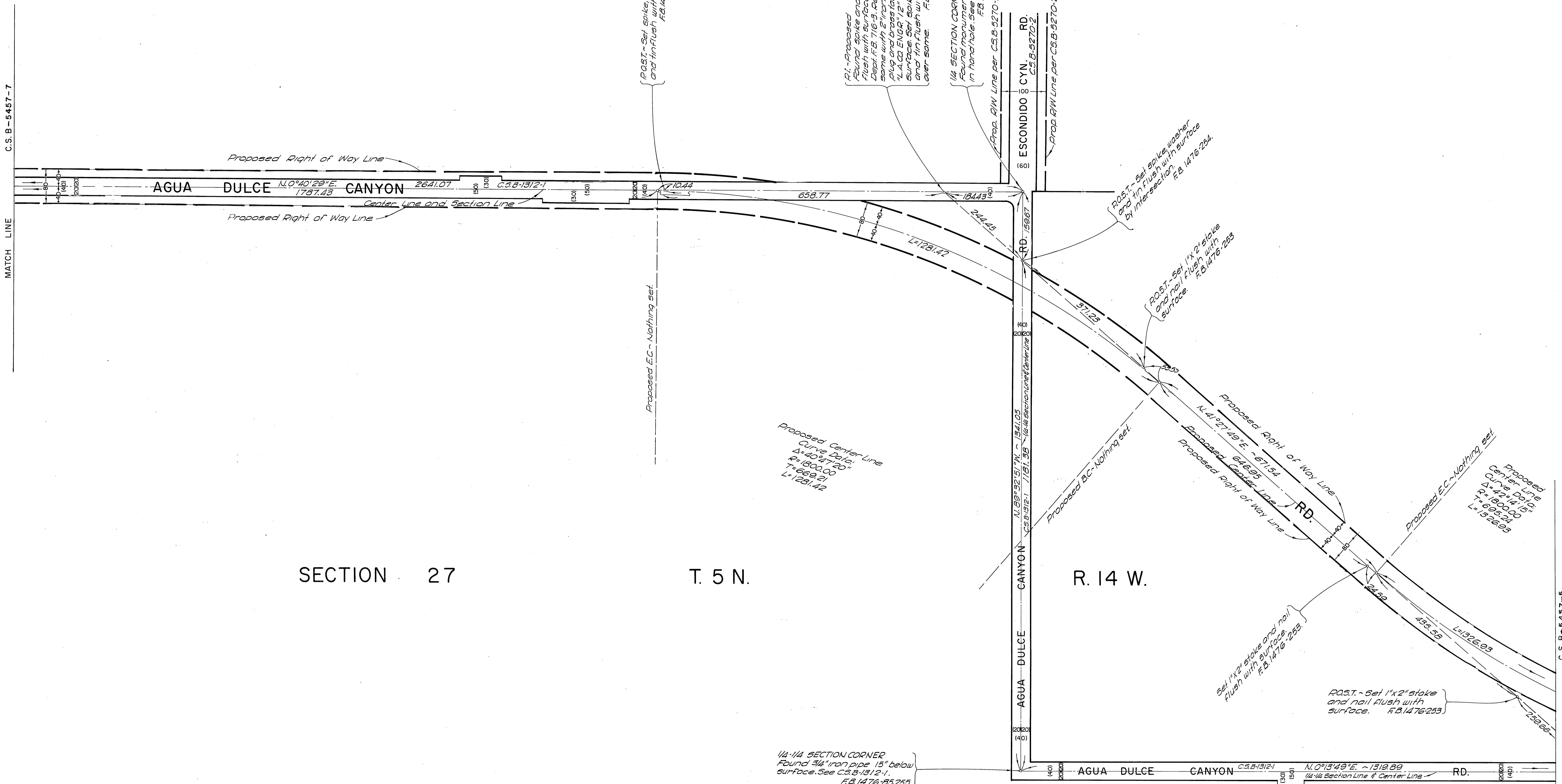
T. 5 N.,

R. 14 W.

SECTION 27

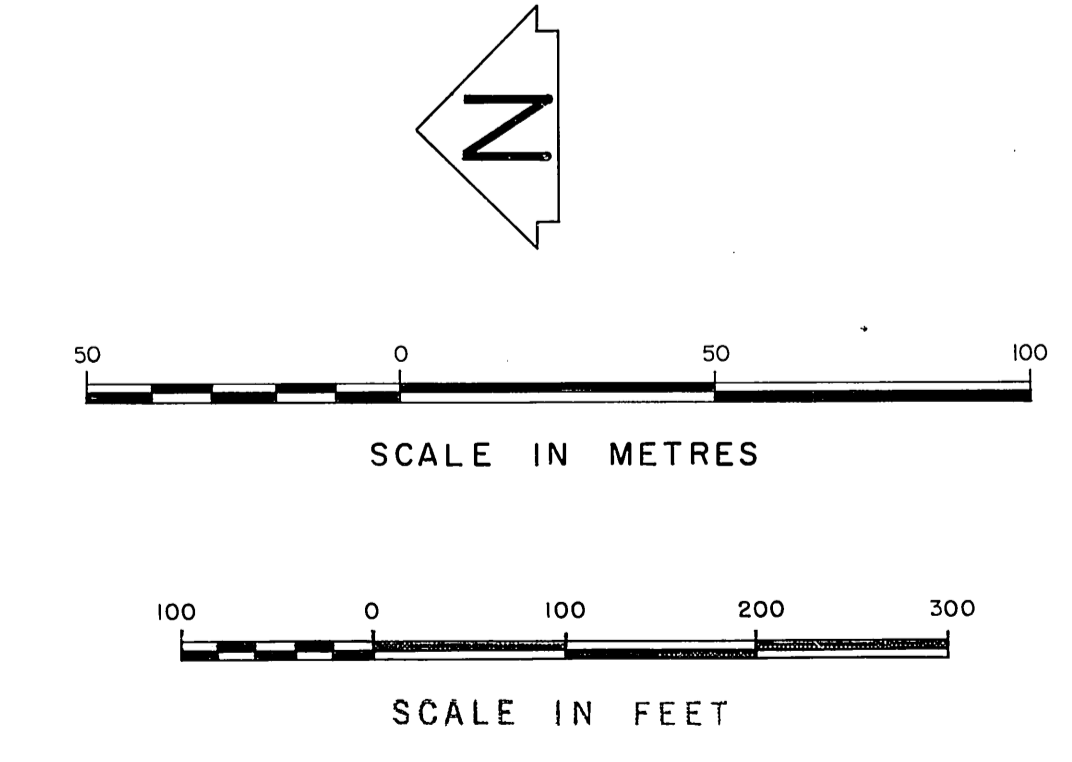
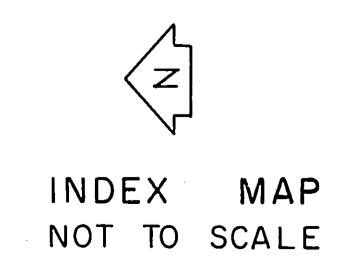
T. 5 N.

R. 14 W.



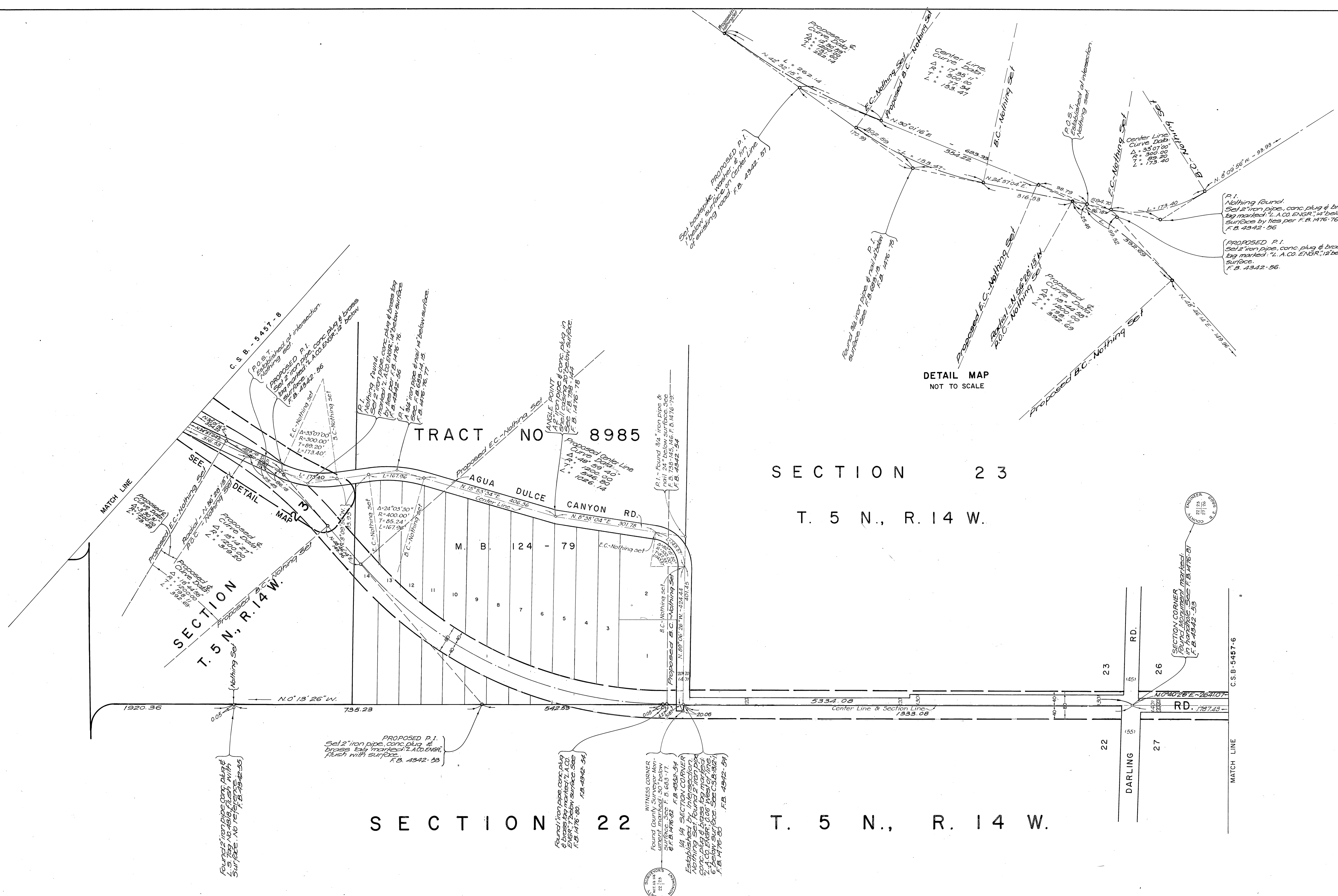
NOTE: THIS MAP SUPERSEDES THE PROPOSED ALIGNMENT OF AGUA DULCE CYN. ROAD AS SHOWN ON C.S.B.-5100 & C.S.B.-5422. SEE I.E.C. MINUTES DATED 11-3-1966, 10-25-1976, 10-22-1981, & 2-24-1983.

ALSO SHOWN IS THE RECLASSIFICATION FROM A MAJOR HIGHWAY TO A SECONDARY HIGHWAY AS SHOWN ON THE LOS ANGELES COUNTY GENERAL PLAN NOVEMBER, 1980.



|   |   |                  |   |          |
|---|---|------------------|---|----------|
| COUNTY OF LOS ANGELES<br>DEPARTMENT OF<br>COUNTY ENGINEER-FACILITIES<br>STEPHEN J. KOONCE-COUNTY ENGINEER<br>PREPARED BY<br>SURVEY DIVISION<br>RICHARD J. MITCHELL<br>ASSISTANT DEPUTY COUNTY ENGINEER<br>SURVEYED BY S. HALISCKY, L.V. SMITH<br>CHECKED BY J.A. CHURCH, D. SAPPELE<br>DRAWN BY B. GOINS & S. HAQUE | ALIGNMENT MAP OF  |                  | COUNTY SURVEYOR'S MAP NO.   |          |
|   | AGUA DULCE CYN. RD.   |                  | <b>B-5457</b>   |          |
|   | FROM<br>SOLEDAD CYN. RD.<br>TO<br>SIERRA HWY.                                       |                  | SHEET 6 OF 9 SHEETS<br>FILED: January 19, 1982<br>BY: [Signature] |          |
|   | BASIS OF BEARINGS<br>THE BEARING OF THE S'LY LINE OF SECTION 14<br>(N. 89°46'45\"/> |                  |   |          |
|   |   | 1963, 1971, 1983 | REFERENCE   | REVISION |
|   |   | F.B. 1476        | F.B. 4342   | NO.      |
|   |   | F.B. 3864        | F.B. 4482   | BY       |
|   |   | JOB NUMBER       | INDEX MAP NO.   | DATE     |
|   |   | 0222.37          | 78  |          |

C.S.B.-5457-5



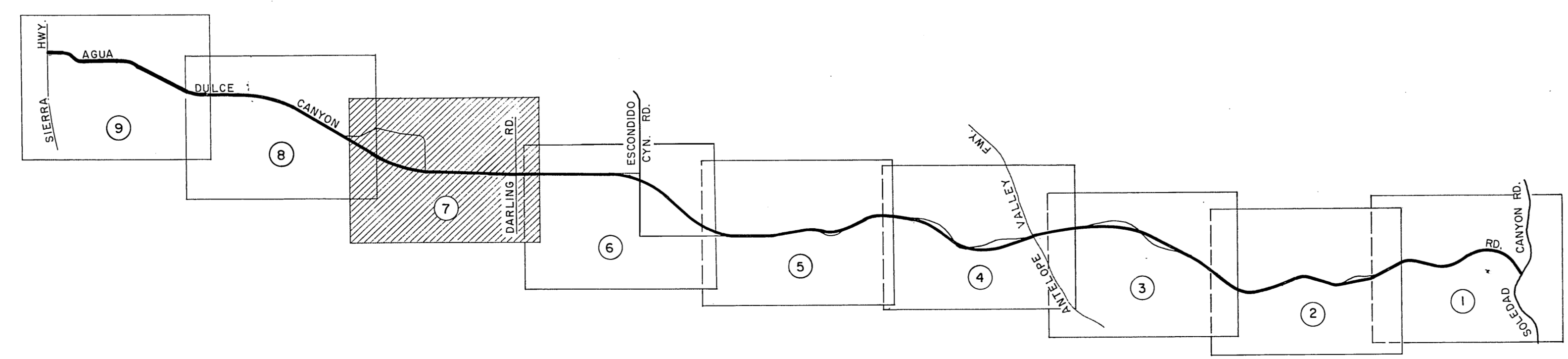
DETAIL MAP NOT TO SCALE

SECTION 23

T. 5 N., R. 14 W.

SECTION 22

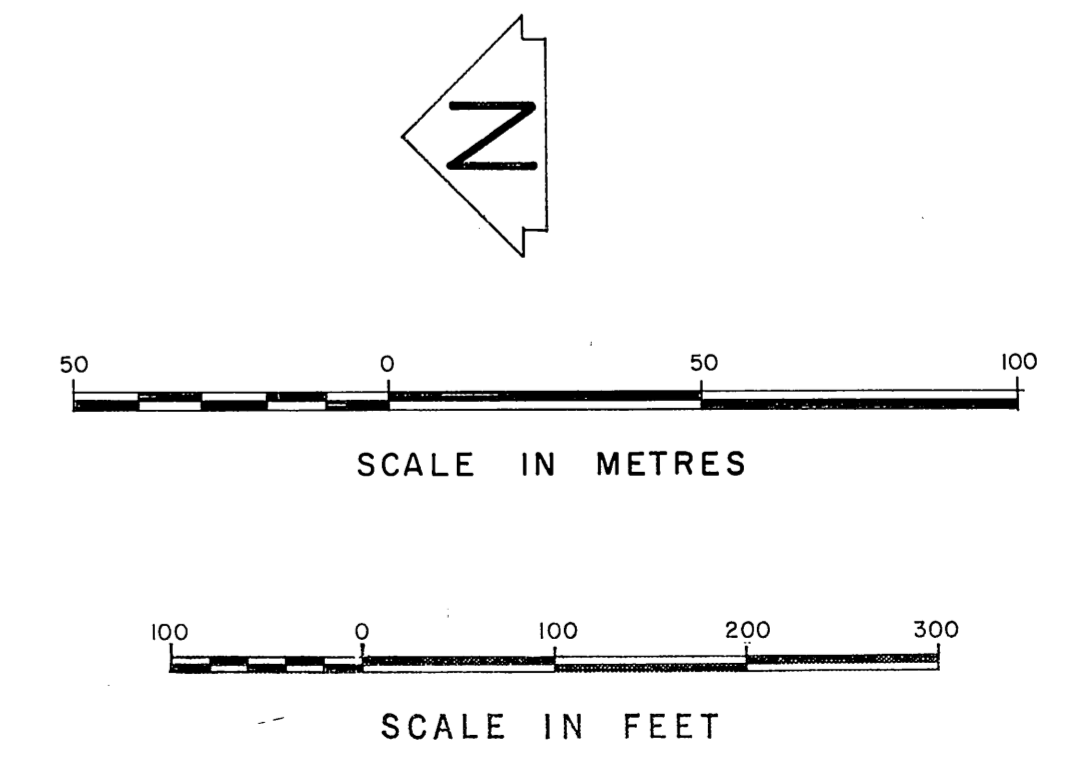
T. 5 N., R. 14 W.



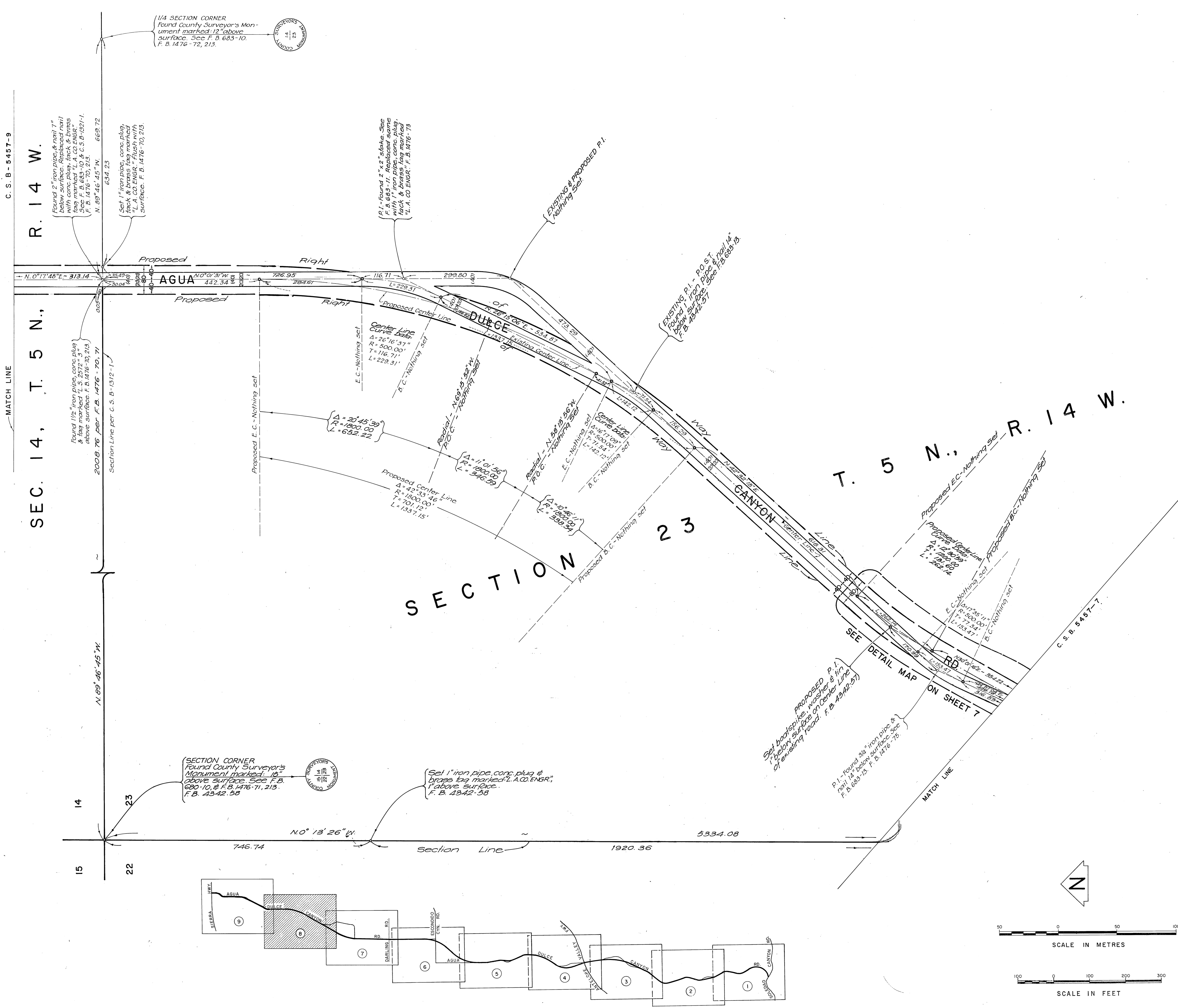
NOTE: THIS MAP SUPERSEDES THE PROPOSED ALIGNMENT OF AGUA DULCE CYN. ROAD AS SHOWN ON C.S.B.-5100 & C.S.B.-5422. SEE I.E.C. MINUTES DATED 11-3-1966, 10-25-1976, 10-22-1981, & 2-24-1983.

ALSO SHOWN IS THE RECLASSIFICATION FROM A MAJOR HIGHWAY TO A SECONDARY HIGHWAY AS SHOWN ON THE LOS ANGELES COUNTY GENERAL PLAN NOVEMBER, 1980.

INDEX MAP NOT TO SCALE



|   |  |  |   |                         |
|---|--|--|---|-------------------------|
| COUNTY OF LOS ANGELES<br>DEPARTMENT OF<br>COUNTY ENGINEER-FACILITIES<br>STEPHEN J. KOONCE-COUNTY ENGINEER<br>PREPARED BY<br>SURVEY DIVISION<br>RICHARD J. MITCHELL<br>ASSISTANT DEPUTY COUNTY ENGINEER<br>SURVEYED BY S. HALLSOKKY, L.V. SMITH.<br>CHECKED BY J. A. CHURCH, D. SAPPPELL<br>DRAWN BY B. GOINS & S. HAQUE | ALIGNMENT MAP OF<br><b>AGUA DULCE CYN. RD.</b><br>FROM<br><b>SOLEDAD CYN. RD.</b><br>TO<br><b>SIERRA HWY.</b>              |  | COUNTY SURVEYOR'S MAP NO.<br><b>B-5457</b><br>SHEET 7 OF 9 SHEETS<br>FILED: <i>January 19, 1984</i><br>DEPUTY: <i>By Mitchell</i><br>SURVEYED<br>1963, 1971, 1983 | REVISION<br>NO. BY DATE |
|   | BASIS OF BEARINGS<br>THE BEARING OF THE SLY LINE OF SECTION 14<br>(N. 89° 46' 45" W.) T. 5 N., R. 14 W. PER C.S.B.-1312-1. |  | REFERENCE<br>F.B. 1476 F.B. 4342<br>F.B. 3864 F.B. 4482<br>JOB NUMBER INDEX MAP NO.<br>0222.37 78   |                         |
|   |  |  |   |                         |
|   |  |  |   |                         |



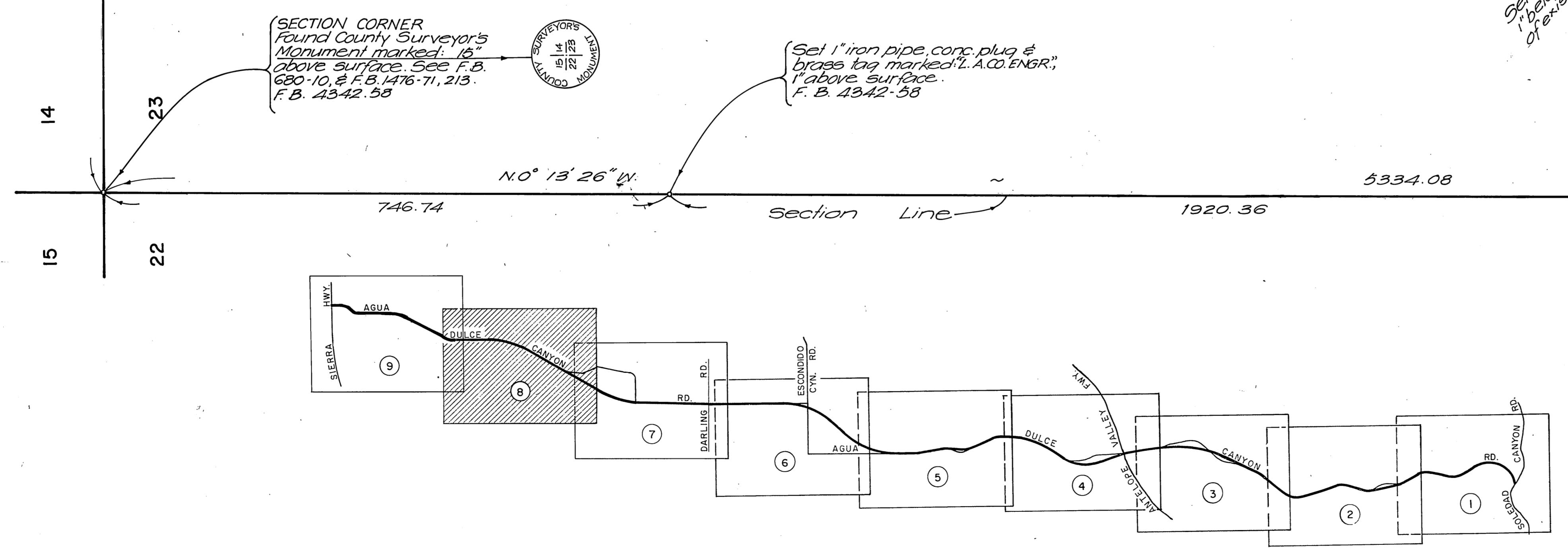
C. S. B - 5457-9

R. 14 W.

SEC. 14, T. 5 N.,

T. 5 N., R. 14 W.

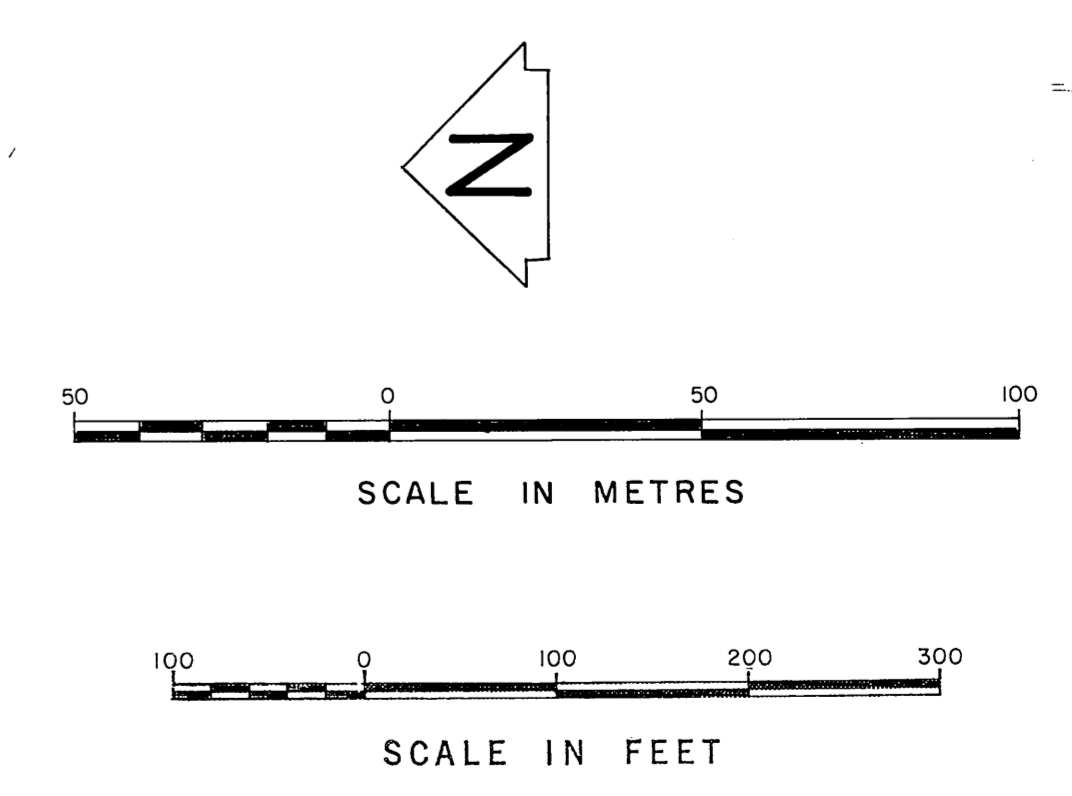
SECTION 23



NOTE: THIS MAP SUPERSEDES THE PROPOSED ALIGNMENT OF AGUA DULCE CYN. ROAD AS SHOWN ON C.S.B. - 5100 & C.S.B. - 5422. SEE I.E.C. MINUTES DATED 11-3-1966, 10-25-1976, 10-22-1981, & 2-24-1983.

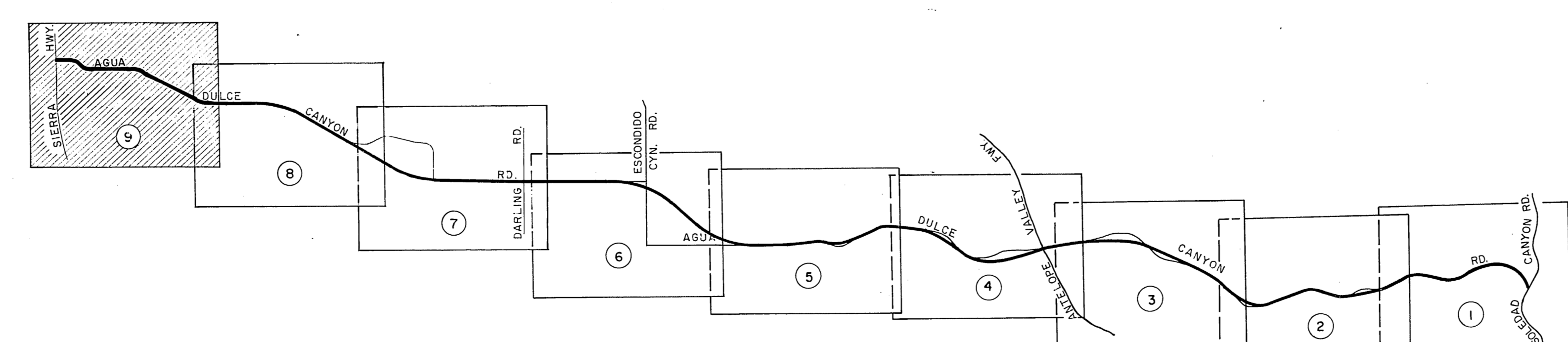
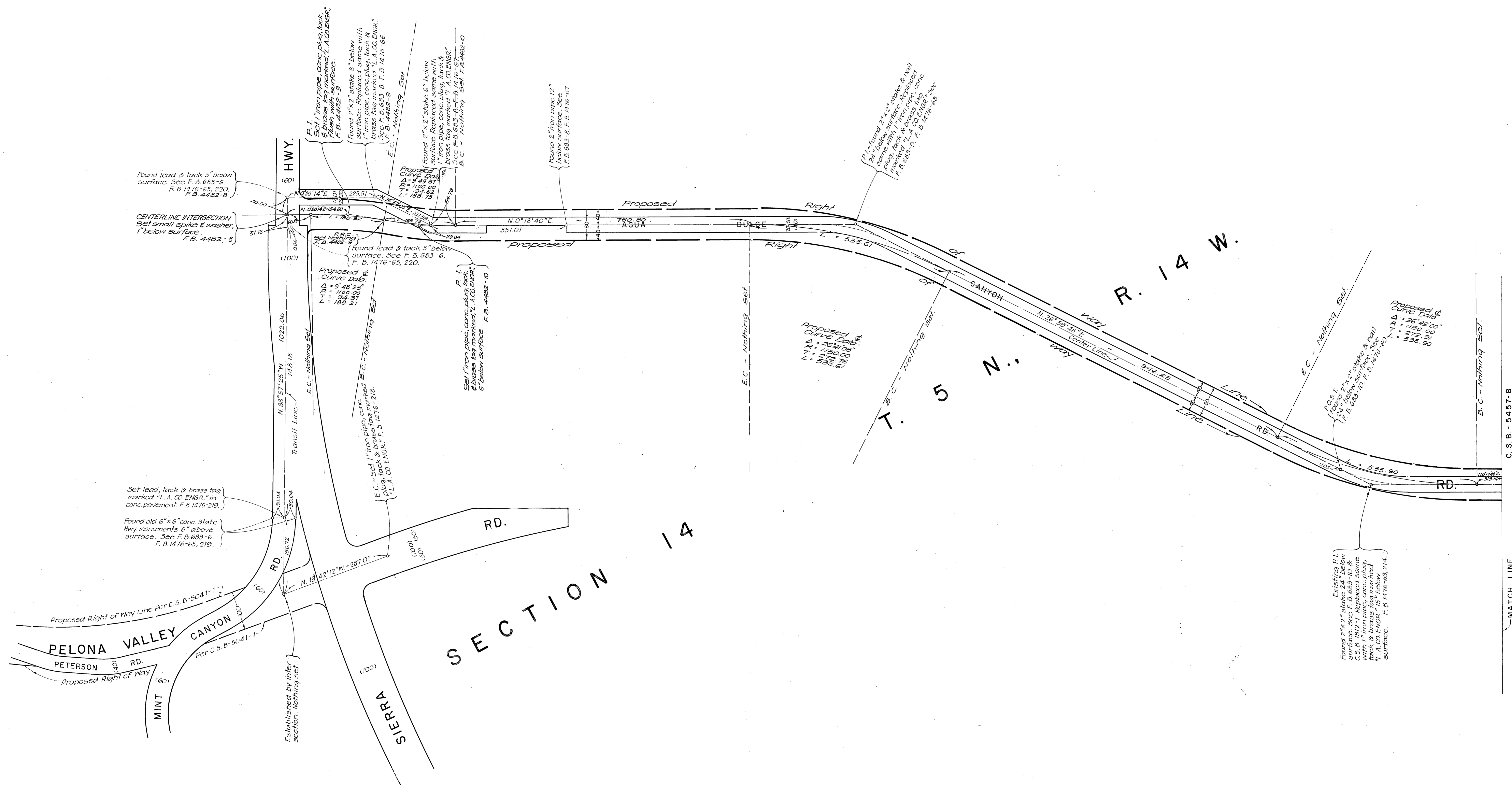
ALSO SHOWN IS THE RECLASSIFICATION FROM A MAJOR HIGHWAY TO A SECONDARY HIGHWAY AS SHOWN ON THE LOS ANGELES COUNTY GENERAL PLAN NOVEMBER, 1980.

INDEX MAP NOT TO SCALE

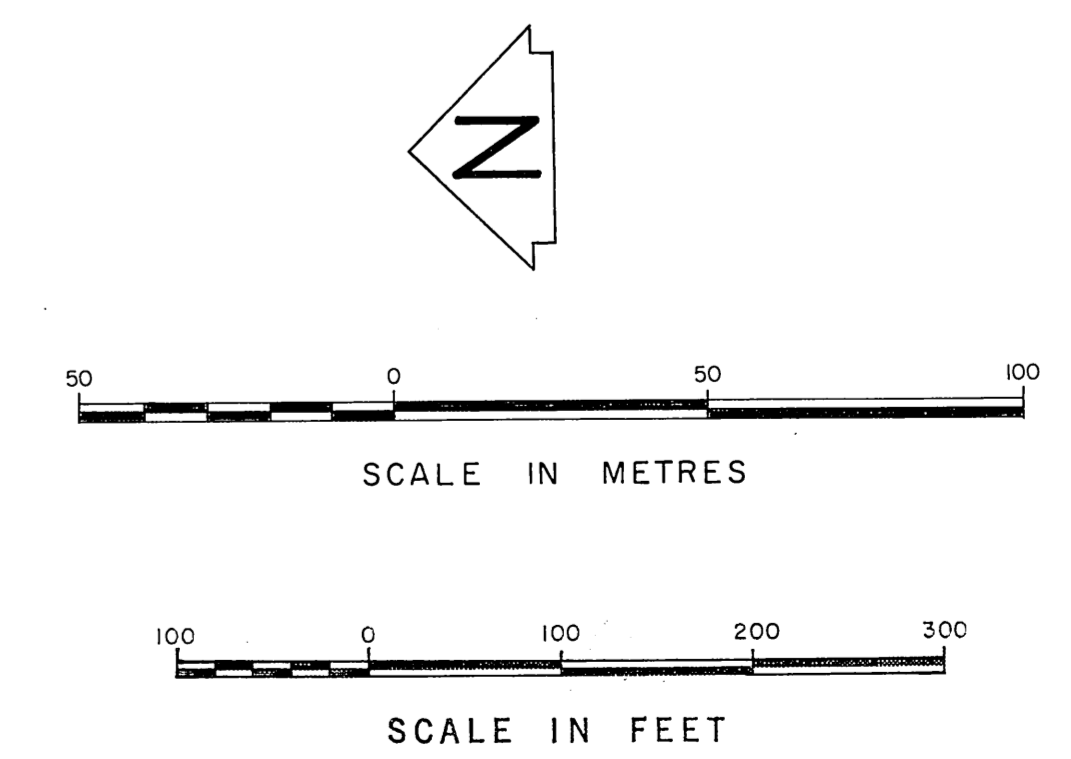


|  |  |  |  |                         |
|--|--|--|--|-------------------------|
| COUNTY OF LOS ANGELES<br>DEPARTMENT OF<br>COUNTY ENGINEER-FACILITIES<br>STEPHEN J. KOONCE-COUNTY ENGINEER<br>PREPARED BY<br>SURVEY DIVISION<br>RICHARD J. MITCHELL<br>ASSISTANT DEPUTY COUNTY ENGINEER<br>SURVEYED BY S. HALL, S. K. SMITH, DEPUTY<br>CHECKED BY J. A. CHURCH, D. SAPPPELL<br>DRAWN BY B. GOINS & S. HAQUE | ALIGNMENT MAP OF   |  | COUNTY SURVEYOR'S MAP NO.<br><b>B-5457</b>   | REVISION<br>NO. BY DATE |
|  | AGUA DULCE CYN. RD.  |  | SHEET 8 OF 9 SHEETS<br>FILED: <i>Terry J. Smith</i><br>DEPUTY  |                         |
|  | FROM<br>SOLEDAD CYN. RD.<br>TO<br>SIERRA HWY.  |  | SURVEYED<br>1963, 1971, 1983   |                         |
|  | BASIS OF BEARINGS<br>THE BEARING OF THE S'LY LINE OF SECTION 14<br>(N. 89° 46' 45" W.) T. 5 N., R. 14 W. PER C.S.B-1312-1. |  | REFERENCE<br>F.B. 1476 F.B. 4342<br>F.B. 3864 F.B. 4482<br>JOB NUMBER<br>0222.37 INDEX MAP NO.<br>78 |                         |





NOTE: THIS MAP SUPERSEDES THE PROPOSED ALIGNMENT OF AGUA DULCE CYN. ROAD AS SHOWN ON C.S.B. - 510 & C.S.B.-5422. SEE I.E.C. MINUTES DATED II-3-1966, IO-25-1976, IO-22-1981, & 2-24-1983.  
ALSO SHOWN IS THE RECLASSIFICATION FROM A MAJOR HIGHWAY TO A SECONDARY HIGHWAY AS SHOWN ON THE LOS ANGELES COUNTY GENERAL PLAN NOVEMBER, 1980.



|   |   |  |  |  |
|---|---|--|--|--|
| COUNTY OF LOS ANGELES<br>DEPARTMENT OF<br>COUNTY ENGINEER-FACILITIES<br>STEPHEN J. KOONCE-COUNTY ENGINEER<br>PREPARED BY<br>SURVEY DIVISION<br>RICHARD J. MITCHELL<br>ASSISTANT DEPUTY COUNTY ENGINEER<br>SURVEYED BY S. HALTSKY, L.V. SMITH<br>CHECKED BY J.A. CHURCH, D. SAPPAL<br>DRAWN BY B. GOINS & S. HAQUE | ALIGNMENT MAP OF<br><b>AGUA DULCE CYN. RD.</b><br>FROM<br><b>SOLEDAD CYN. RD.</b><br>TO<br><b>SIERRA HWY.</b>             |  | COUNTY SURVEYOR'S MAP NO.<br><b>B-5457</b>     | REVISION<br>NO. BY DATE                        |
|   | SHEET 9 OF 9 SHEETS<br>FILED January 19, 1983<br><i>R.J. Mitchell</i><br>DEPUTY   |  | SURVEYED<br>1963, 1971, 1983                   |  |
|   | BASIS OF BEARINGS<br>THE BEARING OF THE SLY LINE OF SECTION 14<br>(N. 83° 46' 45" W.) T. 5 N., R. 14 W. PER C.S.B-1312-1. |  | REFERENCE<br>F.B. 1476<br>F.B. 3864<br>0222.37 | F.B. 4542<br>F.B. 4462<br>INDEX MAP NO.<br>7.8 |
|   |   |  |  |  |