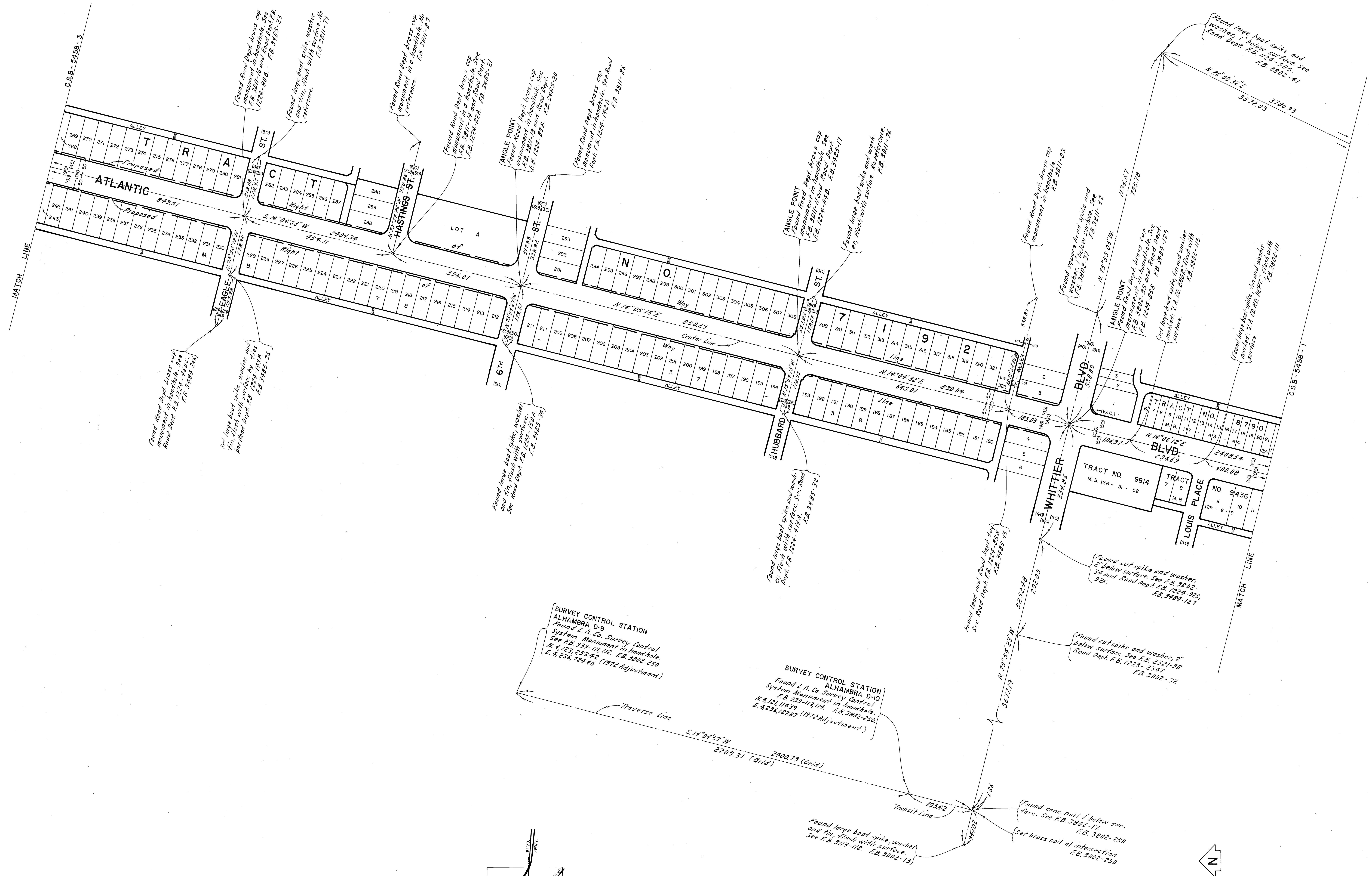
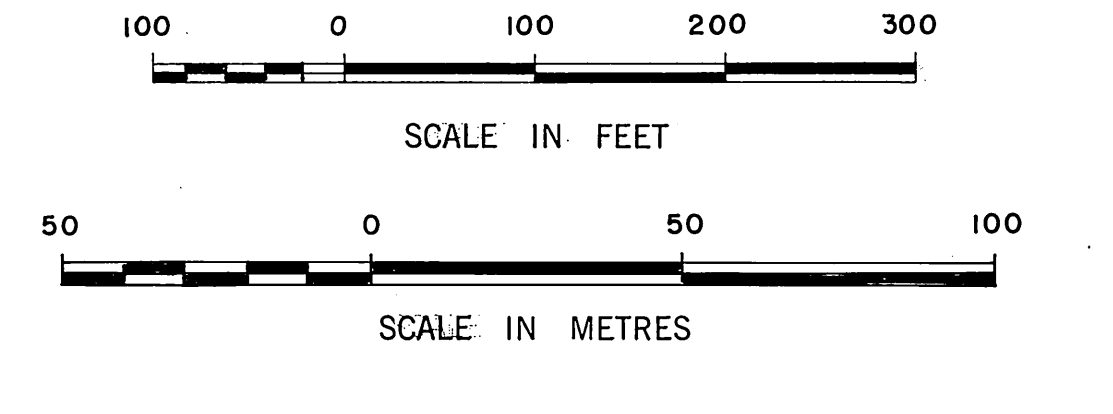
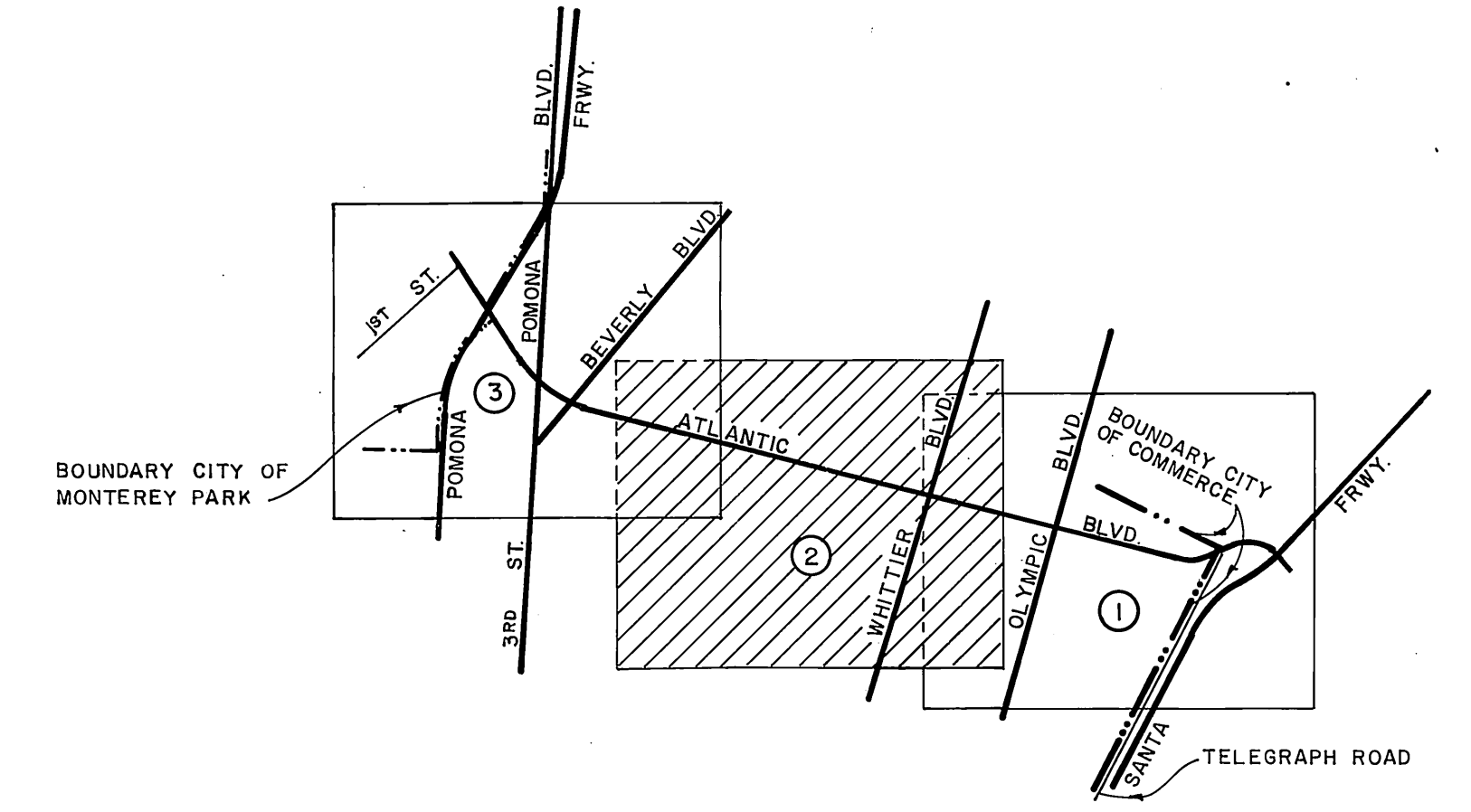


COUNTY OF LOS ANGELES DEPARTMENT OF COUNTY ENGINEER-FACILITIES STEPHEN J. KOONCE-COUNTY ENGINEER PREPARED BY SURVEY DIVISION RICHARD J. MITCHELL ASSISTANT DEPUTY COUNTY ENGINEER SURVEYED BY F.E. BROOKS, L.L. BROWN H.H. SPRIGGS CHECKED BY R. HILARIO DRAWN BY G. MASUDA	ALIGNMENT MAP OF ATLANTIC BLVD. FROM TELEGRAPH ROAD TO 1ST STREET BASIS OF BEARINGS CALIFORNIA COORDINATE SYSTEM, ZONE 7		COUNTY SURVEYOR'S MAP NO. B-5458 SHEET 1 OF 3 SHEETS FILED: <i>Decker</i> 4 19 83 <i>R.J. Monte Lull</i> SURVEYED MAY, 1972 - APRIL, 1973 REFERENCE F.B. 3483 F.B. 3802 F.B. 3485 F.B. 3811 JOB NUMBER 0220.11 INDEX MAP NO. 114-237	REVISION NO. BY DATE



SURVEY CONTROL STATION ALHAMBRA D-9
 Found L.A. Co. Survey Control System Monument in handhole. N 4 1/2' 253.42. E 6 2/3' 724.16 (1972 Adjustment)

SURVEY CONTROL STATION ALHAMBRA D-10
 Found L.A. Co. Survey Control System Monument in handhole. N 4 1/2' 114.39. E 6 2/3' 187.87 (1972 Adjustment)

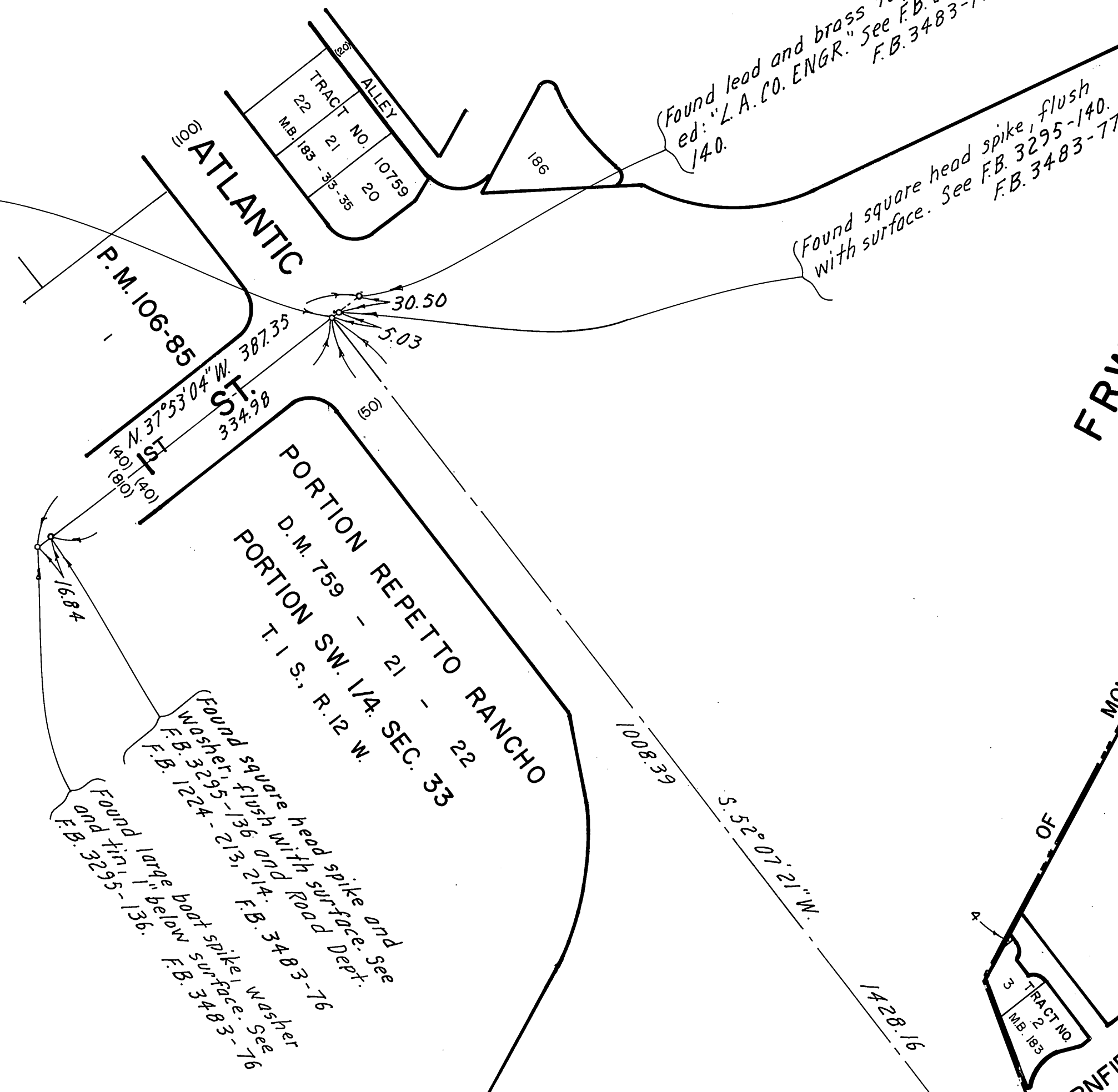


COUNTY OF LOS ANGELES DEPARTMENT OF COUNTY ENGINEER-FACILITIES STEPHEN J. KOONCE-COUNTY ENGINEER PREPARED BY SURVEY DIVISION RICHARD J. MITCHELL ASSISTANT DEPUTY COUNTY ENGINEER SURVEYED BY FEBROOKS, L.L. BROWN H.H. SPRIGGS CHECKED BY R. HILARIO DRAWN BY G. MASUYA	ALIGNMENT MAP OF ATLANTIC BLVD. FROM TELEGRAPH ROAD TO 1ST STREET BASIS OF BEARINGS CALIFORNIA COORDINATE SYSTEM, ZONE 7		COUNTY SURVEYOR'S MAP NO. B-5458 SHEET 2 OF 3 SHEETS FILED: <i>Oct 14 1973</i> <i>Dr. J. Mitchell</i> DEPUTY SURVEYED MAY, 1972 - APRIL, 1973 REFERENCE F.B. 3483 F.B. 3802 F.B. 3485 F.B. 3811 JOB NUMBER 022011 INDEX MAP NO. 114-237	REVISION NO. BY DATE

Found lead and tack, 2" below surface. See F.B. 3295-140 and Road Dept. F.B. 1224-215, 216. F.B. 3483-77

Found lead and brass tag mark ed. L.A. Co. ENGR. See F.B. 3295-140, F.B. 3483-77

Found square head spike flush with surface. See F.B. 3295-140, F.B. 3483-77



POMONA

FRWY.

MONTEREY PARK

FERNFIELD DR

BLVD

CITY

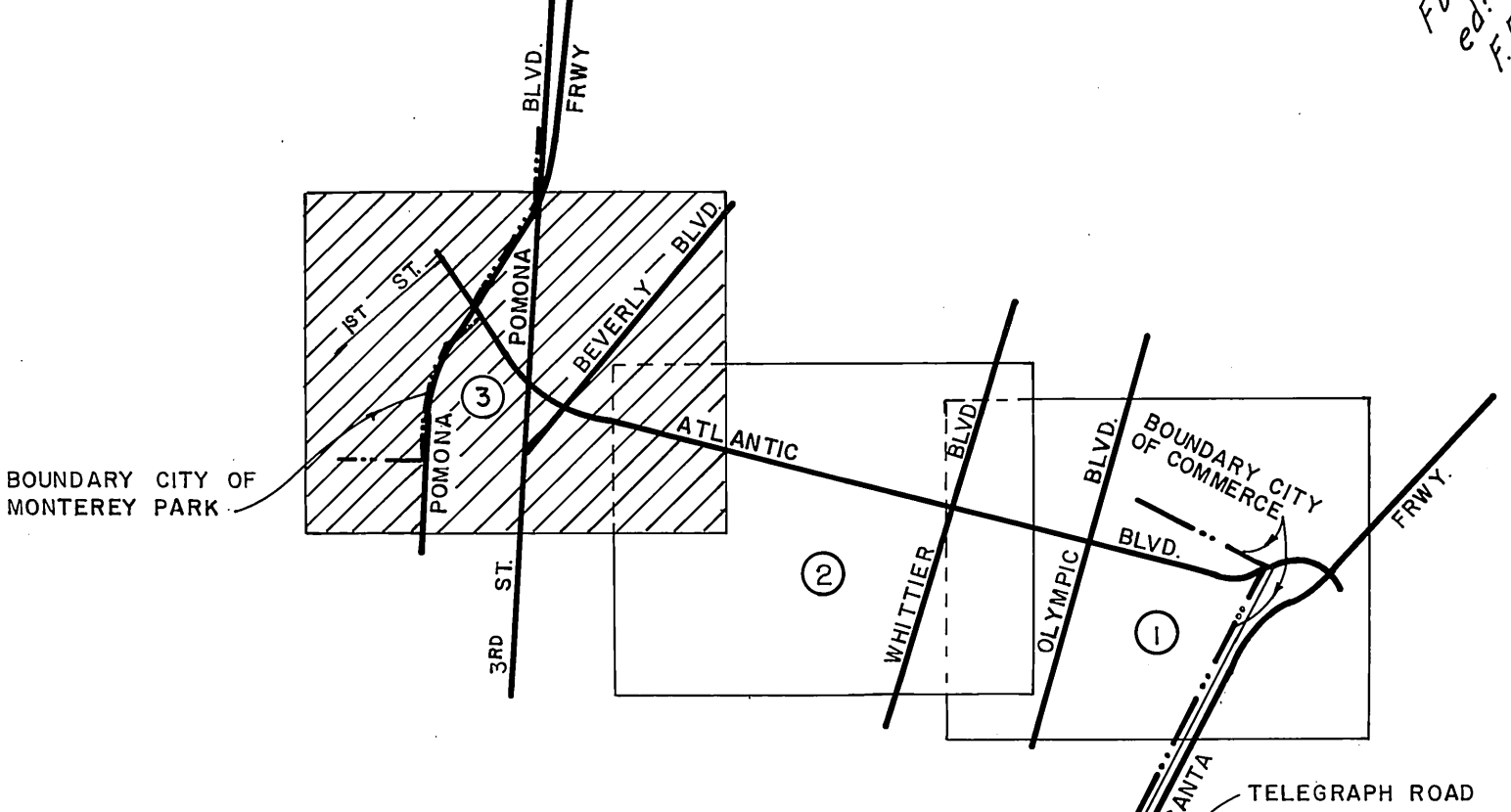
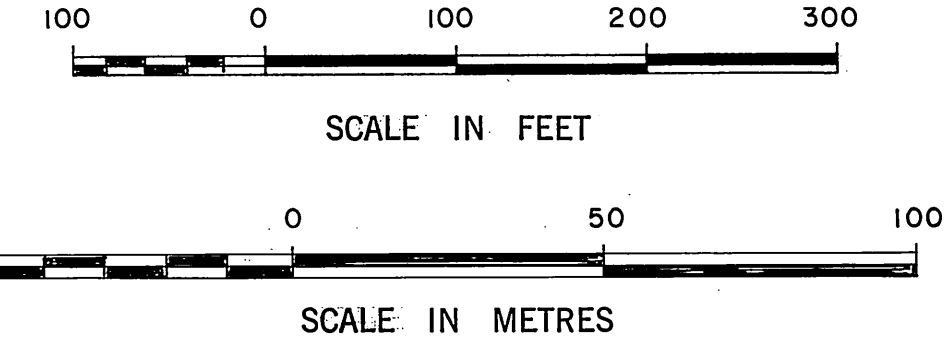
P.O.S.T.

POMONA

BEVERLY

BLVD

CORONA



Found square head spike, washer and tin, 2" below surface. See F.B. 3811-49. F.B. 3483-206

Found nail. No reference. Set large boot spike, washer and tin, flush with surface. F.B. 3483-203

A lead and tack. F.B. 359-119

Set large boot spike, washer and tin flush with surface. F.B. 3483-204

Found lead and tack in conc. traffic island. See F.B. 1641-85 and F.B. 3811-23. F.B. 3483-194

Found large boot spike, washer and tin, flush with surface. See F.B. 3235-142, F.B. 3811-22 and Road Dept. F.B. 1224-75. F.B. 3483-227

Found lead and brass tag mark ed. L.A. Co. ENGR. in conc. traffic island. See F.B. 1224-75. F.B. 3483-227

Found lead and tack. See Road Dept. F.B. 1224-75. F.B. 3483-227

Found large boot spike, washer and tin, flush with surface. See F.B. 3483-228

Found square head spike, washer and tin, flush with surface. See F.B. 3483-228

Found small boot spike, washer and tin, flush with surface. See F.B. 3483-228

Found 1" iron pipe and brass tag mark ed. L.A. Co. ENGR. in conc. traffic island. See F.B. 1224-75. F.B. 3483-227

Found large boot spike and washer in conc. traffic island. See F.B. 1224-444, 445, F.B. 3483-453

Found Road Dept. brass cap manometer in handhole. See F.B. 3483-228

Found Road Dept. brass cap manometer in handhole. See F.B. 1224-75, F.B. 3483-227

Found Road Dept. brass cap manometer in handhole. See F.B. 1224-75, F.B. 3483-227

Found Road Dept. brass cap manometer in handhole. See F.B. 1224-75, F.B. 3483-227

Found Road Dept. brass cap manometer in handhole. See F.B. 1224-75, F.B. 3483-227

Found Road Dept. brass cap manometer in handhole. See F.B. 1224-75, F.B. 3483-227

COUNTY OF LOS ANGELES
DEPARTMENT OF
COUNTY ENGINEER-FACILITIES
STEPHEN J. KOONCE-COUNTY ENGINEER
PREPARED BY
SURVEY DIVISION
RICHARD J. MITCHELL
ASSISTANT DEPUTY COUNTY ENGINEER
SURVEYED BY F.E. BROOKS, L.L. BROWN
H.H. SPRIGGS
CHECKED BY R. MILARDO
DRAWN BY G. MASUDA

ALIGNMENT MAP OF
ATLANTIC BLVD.
FROM
TELEGRAPH ROAD
TO
1ST STREET
BASIS OF BEARINGS
CALIFORNIA COORDINATE SYSTEM, ZONE 7

COUNTY SURVEYOR'S MAP NO. B-5458		REVISION
SHEET 3 OF 3 SHEETS		NO. BY DATE
FILED: <i>[Signature]</i> 19 52		
MAY, 1972 - APRIL, 1973		
REFERENCE F.B. 3483 F.B. 3485	F.B. 3802 F.B. 3811	
JOB NUMBER 0250.11	INDEX MAP NO. 114-237	