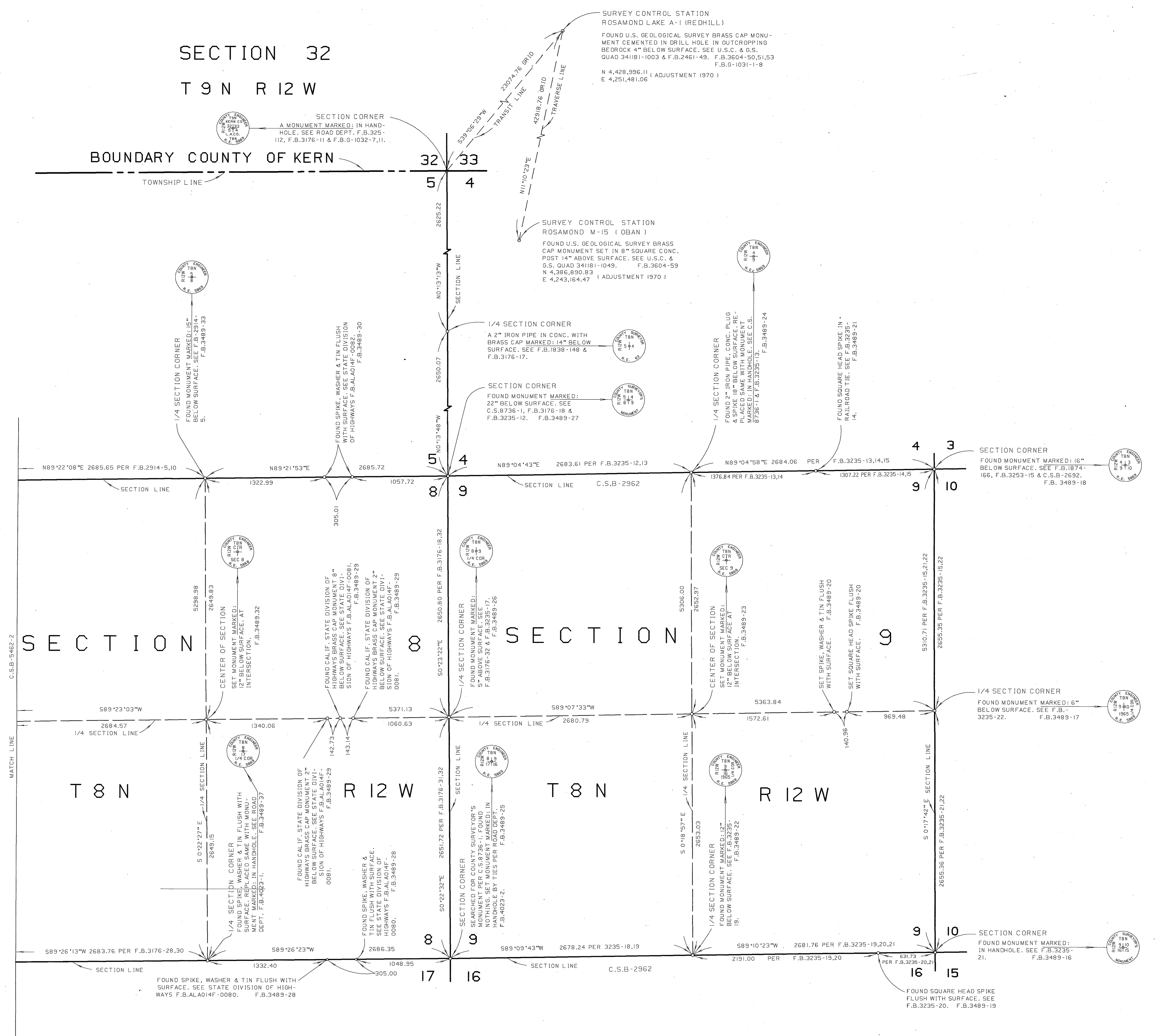


1-5042-B-2485-1

SECTION 32  
T 9 N R 12 W

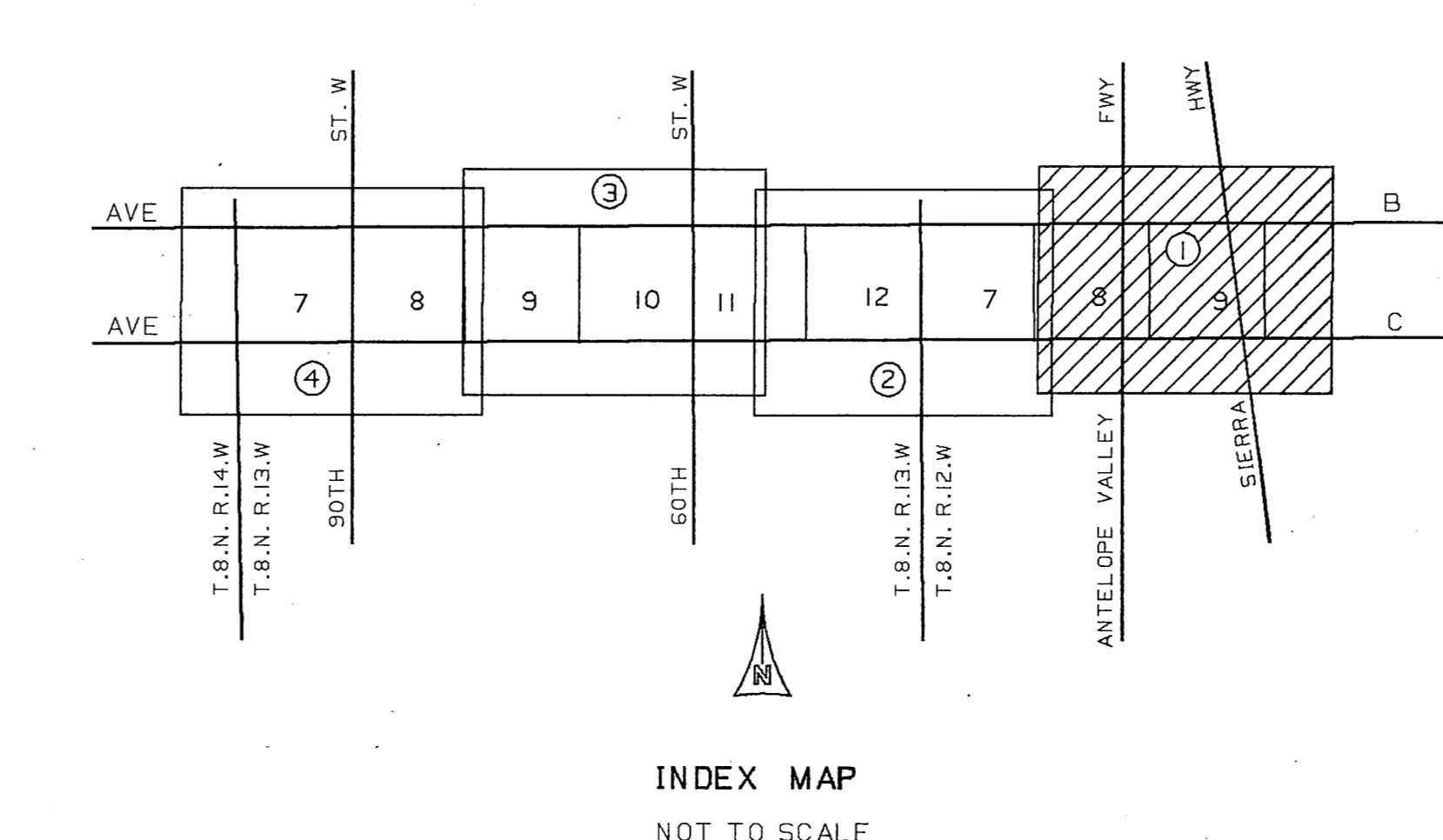
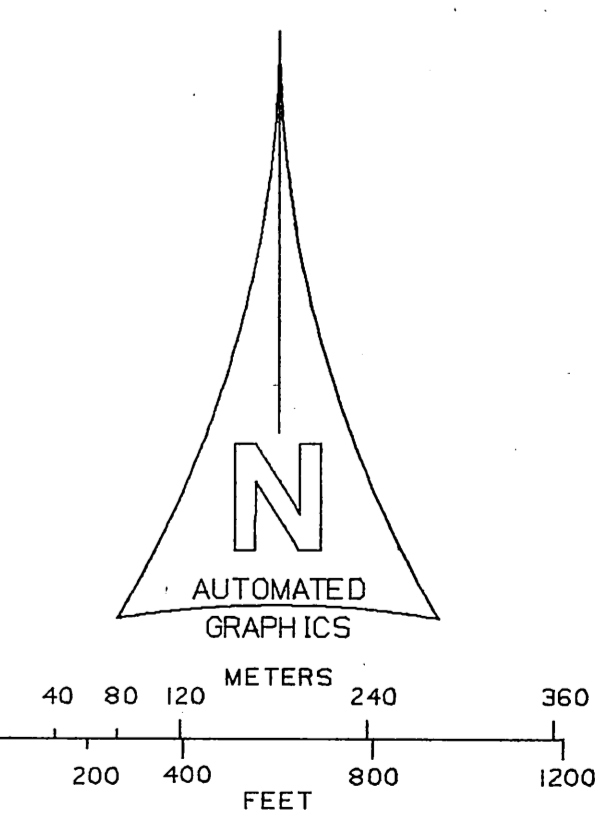
BOUNDARY COUNTY OF KERN



SURVEY CONTROL STATION  
ROSAMOND LAKE A-1 (REDHILL)  
FOUND U.S. GEOLOGICAL SURVEY BRASS CAP MONUMENT CEMENTED IN DRILL HOLE IN OUTCROPPING BEDROCK 4" BELOW SURFACE. SEE U.S.C. & G.S. QUAD 34181-1003 & F.B.2461-49, F.B.3604-50,51,53 N 4,428,996.11 (ADJUSTMENT 1970) E 4,251,481.06

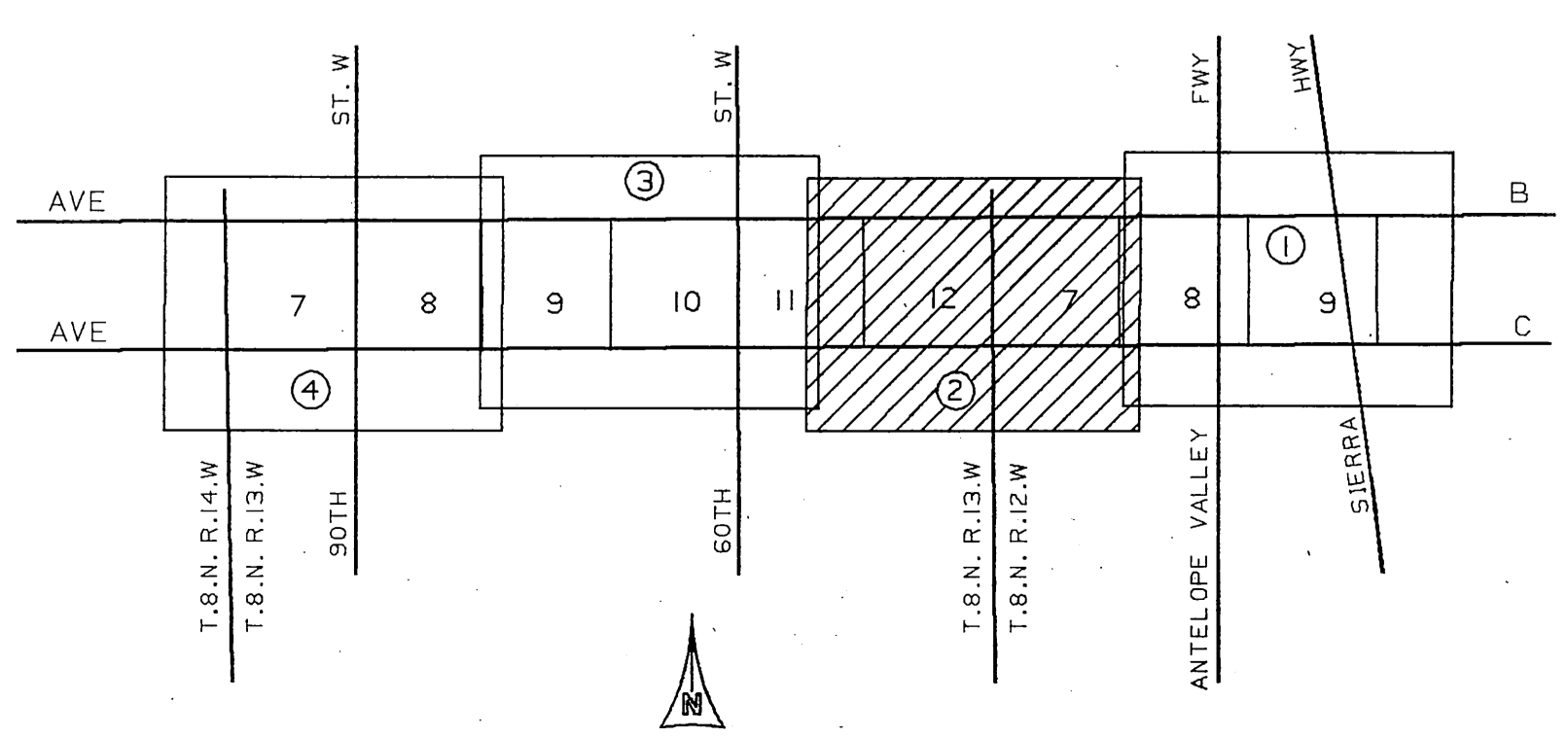
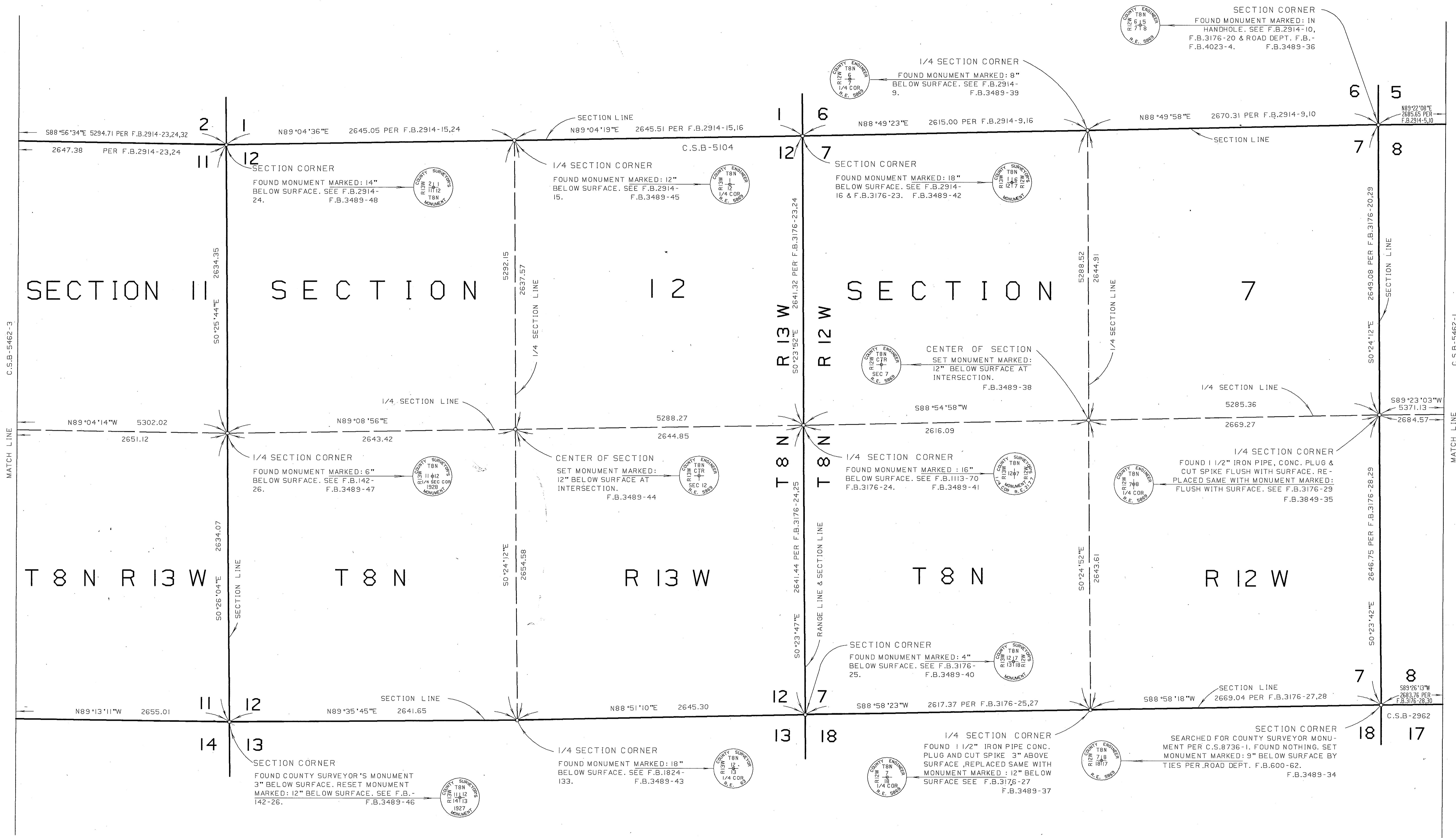
SURVEY CONTROL STATION  
ROSAMOND M-15 (OBAN)  
FOUND U.S. GEOLOGICAL SURVEY BRASS CAP MONUMENT SET IN 8" SQUARE CONC. POST 14" ABOVE SURFACE. SEE U.S.C. & G.S. QUAD 34181-1049, F.B.3604-59 N 4,386,890.83 E 4,243,164.47 (ADJUSTMENT 1970)

NOTE :  
THIS MAP WAS FILED FOR THE PURPOSE OF ESTABLISHING SECTION LINES. ALL OTHER CADASTRAL DATA HAS BEEN OMITTED.

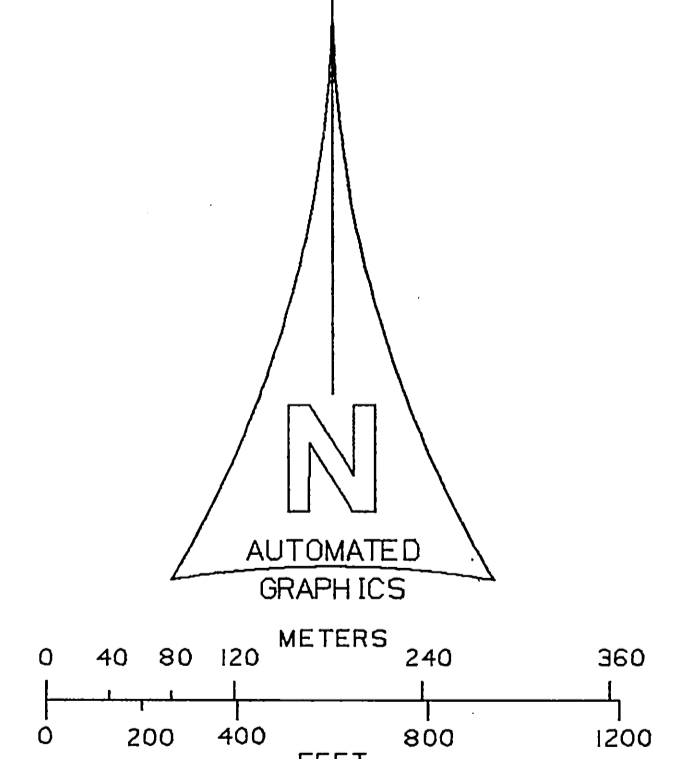


COUNTY OF LOS ANGELES DEPARTMENT OF PUBLIC WORKS T.A. TIDEMANSON - COUNTY ENGINEER PREPARED BY MAPPING DIVISION ARMANDO CID DIVISION ENGINEER	MAP OF	COUNTY SURVEYOR'S MAP NO
	SECTIONS 7, 8 & 9 T. 8 N. R. 12 W. S.B.M.	<b>B-5462</b>
SURVEYED BY J. MENDONCA	SECTIONS 7, 8, 9, 10, 11 & 12 T. 8 N. R. 13 W. S.B.M.	SHEET 1 OF 4 SHEETS
CHECKED BY B. HILARIO	BASIS OF BEARINGS CALIFORNIA COORDINATE SYSTEM, ZONE 7	FILED: 5/24/1970 DEPUTY
DRAWN BY G. MASUDA		SURVEYED JULY 1969 - SEPT. 1970
		REFERENCE F.B.G-1031 F.B.3489 F.B.3604 F.B.G-1032 F.B.3862 F.B.3176
		JOB NUMBER 0208-11
		INDEX MAP NO 71

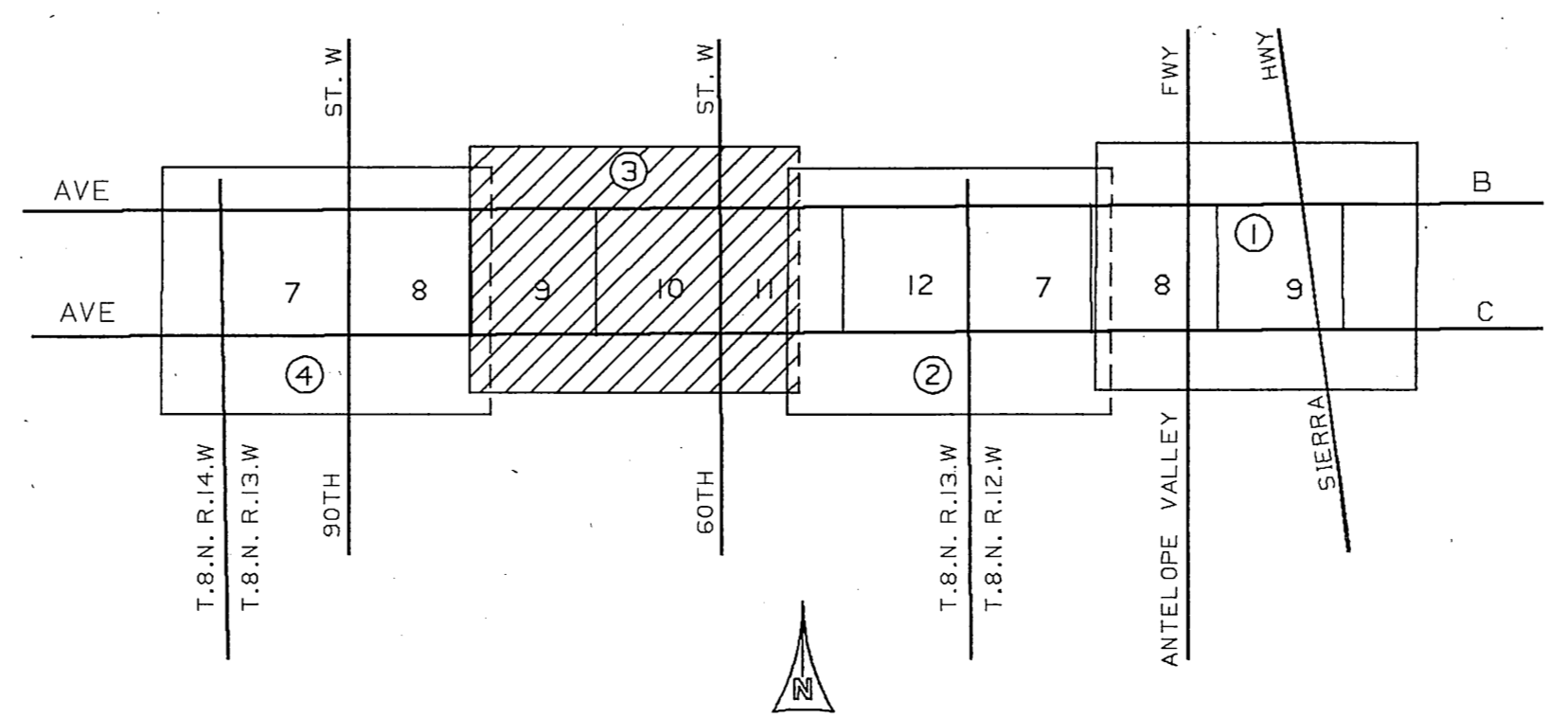
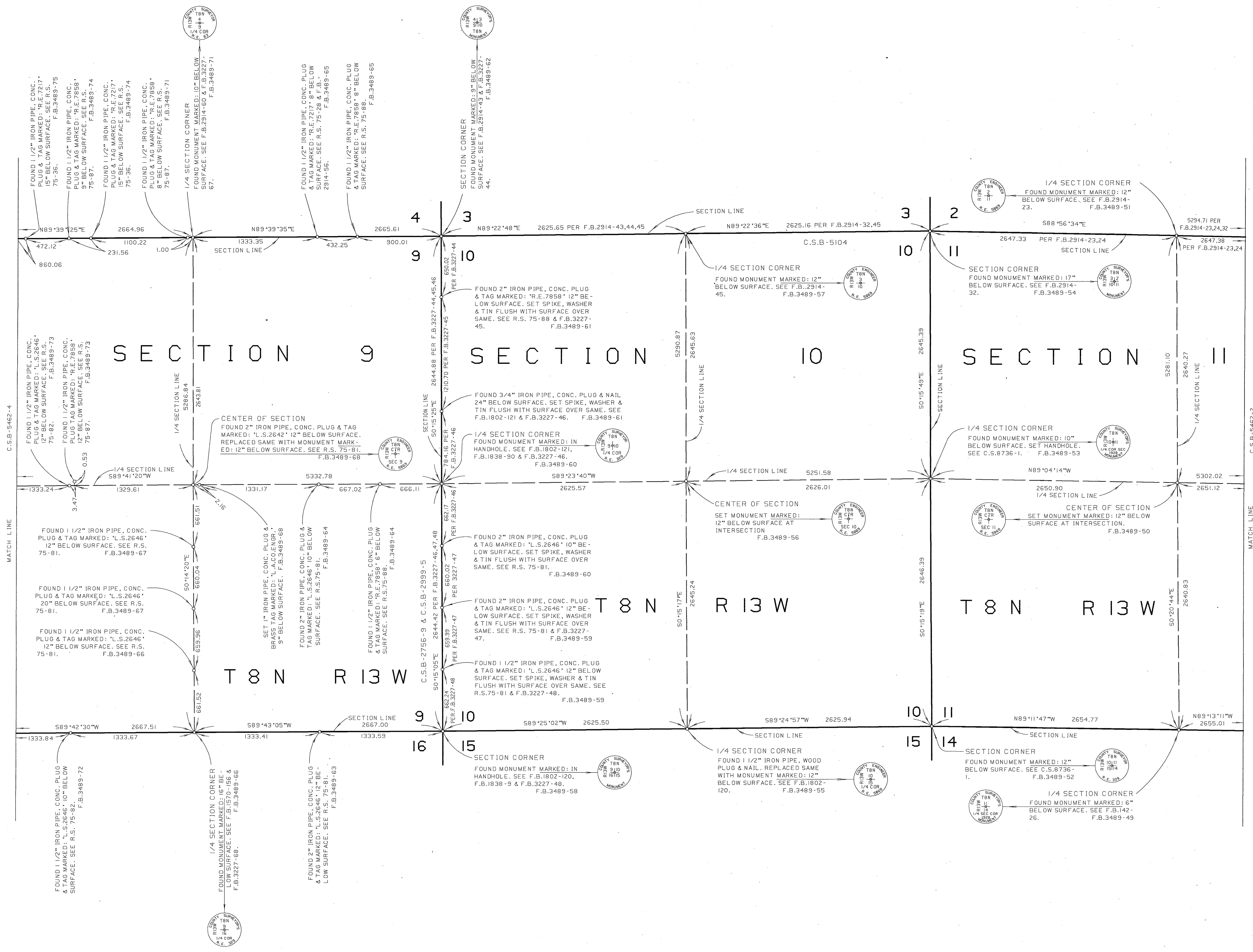
1-5042-B-2485-1



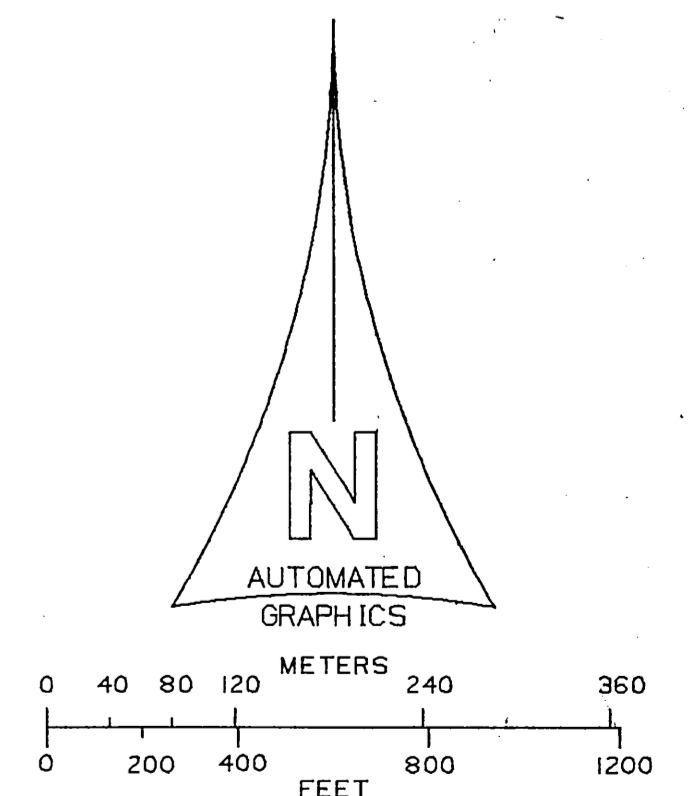
NOTE :  
 THIS MAP WAS FILED FOR THE PURPOSE OF  
 ESTABLISHING SECTION LINES. ALL OTHER  
 CADASTRAL DATA HAS BEEN OMITTED.



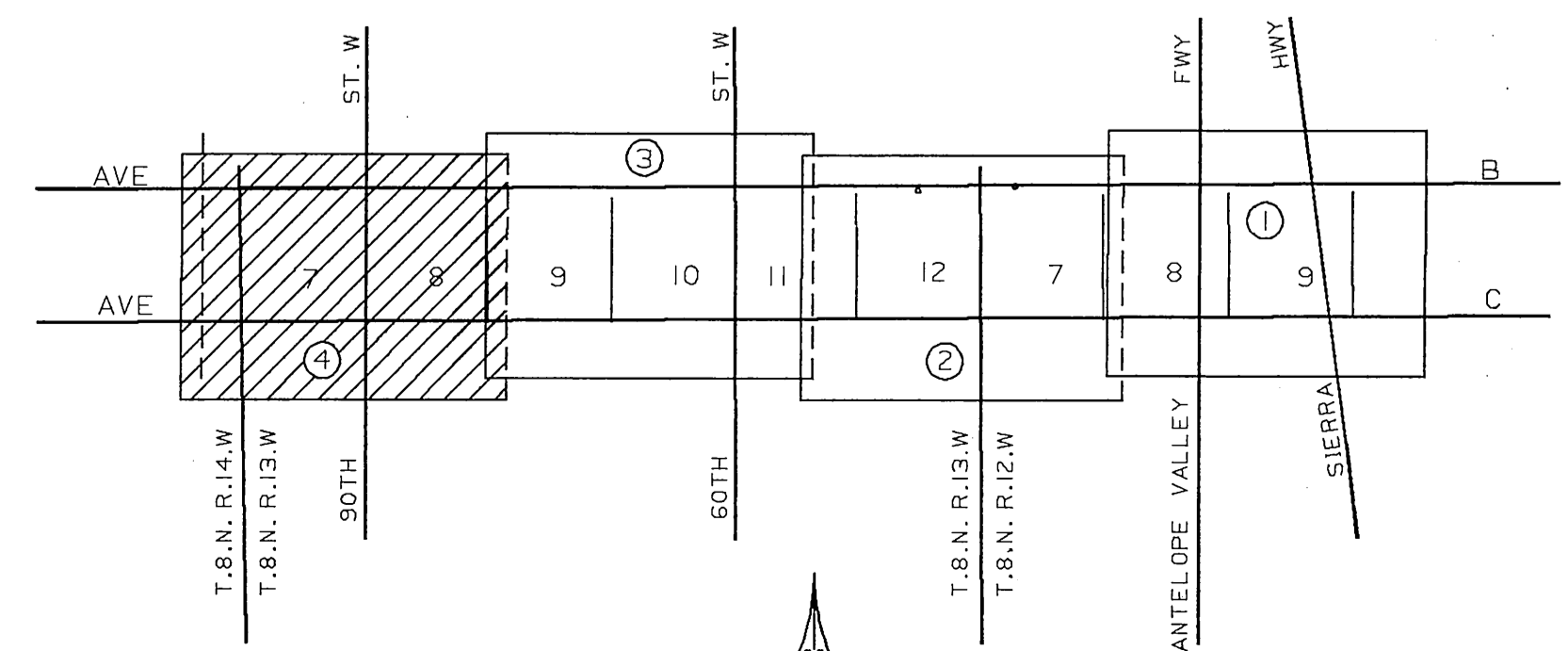
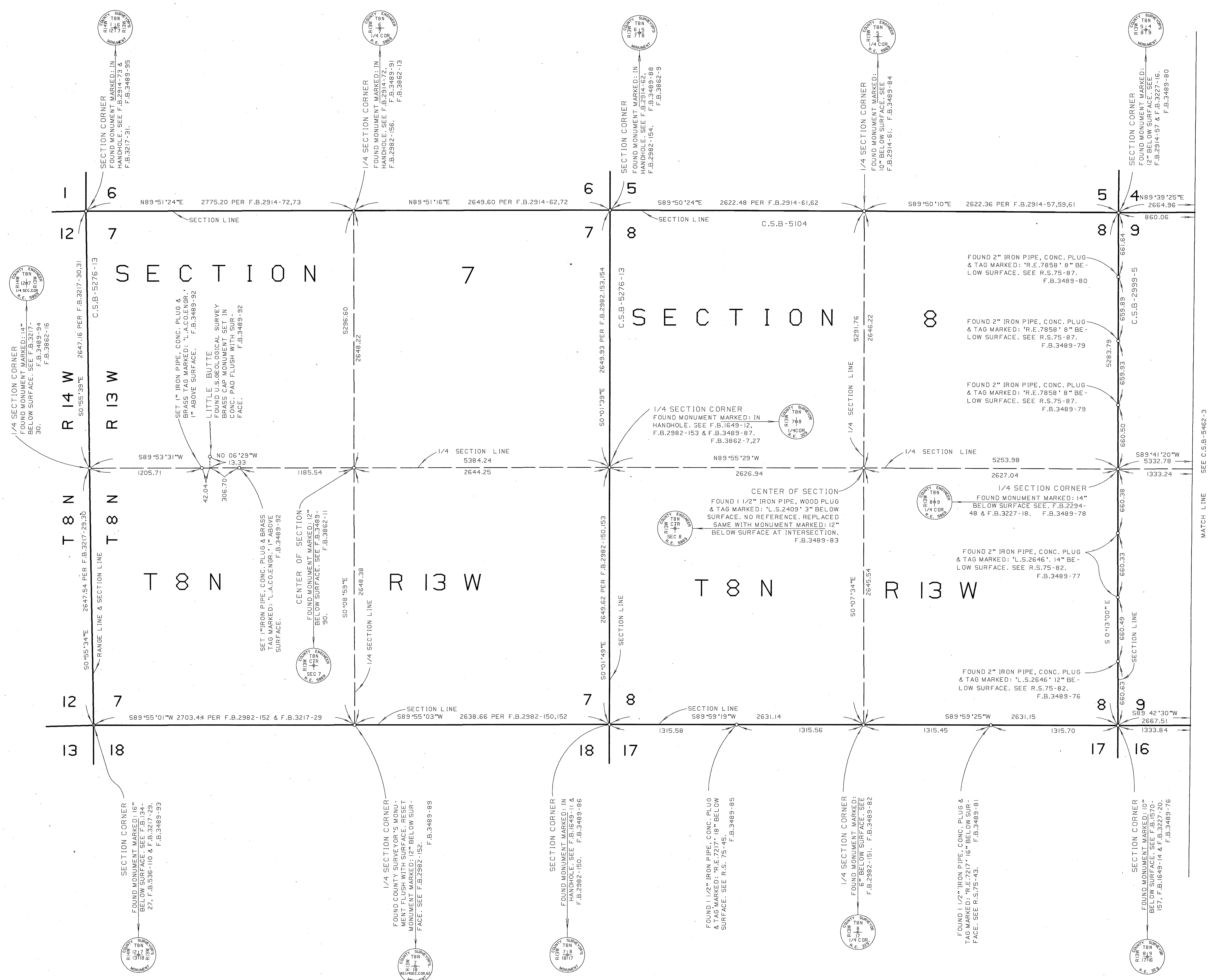
COUNTY OF LOS ANGELES DEPARTMENT OF PUBLIC WORKS T.A. IDEMANSON - COUNTY ENGINEER PREPARED BY MAPPING DIVISION ARMANDO CID DIVISION ENGINEER SURVEYED BY J. MENDONCA CHECKED BY P. HILARIO DRAWN BY G. MASUDA	MAP OF <b>SECTIONS 7, 8 &amp; 9</b> <b>T. 8 N. R. 12. W. S. B. M.</b> <b>SECTIONS 7, 8, 9, 10, 11 &amp; 12</b> <b>T. 8 N. R. 13 W. S. B. M.</b>		COUNTY SURVEYOR'S MAP NO <b>B-5462</b> SHEET 2 OF 4 SHEETS FILED: <i>5/21/1970</i> DEPUTY SURVEYED JULY 1969 - SEPT. 1970 REFERENCE F.B.G-1031 F.B.3489 F.B.3604 F.B.G-1032 F.B.3862 F.B.3176 JOB NUMBER 0208.11 INDEX MAP NO 71
	BASIS OF BEARINGS CALIFORNIA COORDINATE SYSTEM, ZONE 7		
	COUNTY SURVEYOR'S MAP NO <b>B-5462-1</b>		
	SHEET 2 OF 4 SHEETS		



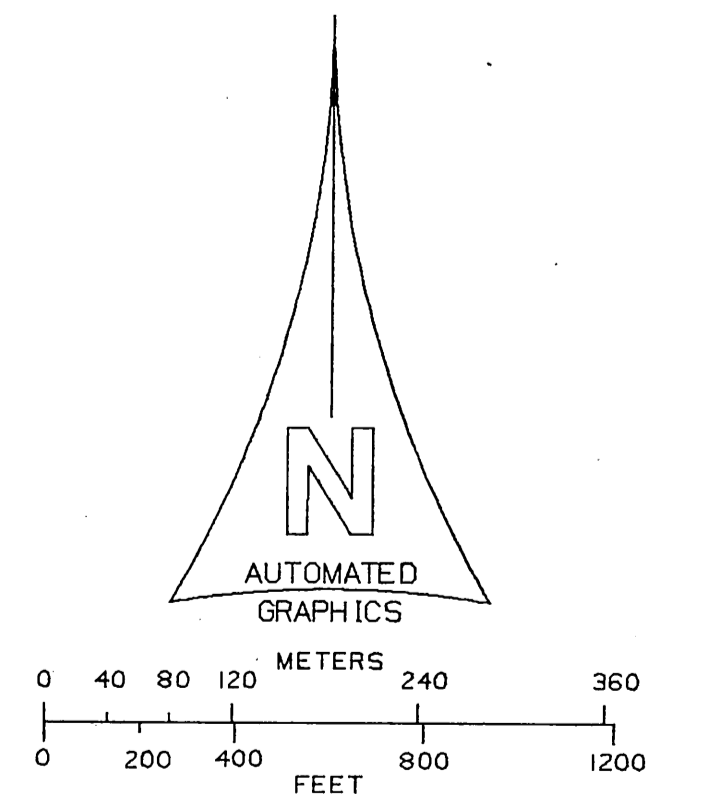
NOTE :  
THIS MAP WAS FILED FOR THE PURPOSE OF  
ESTABLISHING SECTION LINES. ALL OTHER  
CADASTRAL DATA HAS BEEN OMITTED.



COUNTY OF LOS ANGELES <b>DEPARTMENT OF PUBLIC WORKS</b> T.A. TIDEMANSON - COUNTY ENGINEER PREPARED BY MAPPING DIVISION ARMANDO CID DIVISION ENGINEER SURVEYED BY J. MENDONCA CHECKED BY J. HILARIO DRAWN BY G. MASUDA	MAP OF <b>SECTIONS 7, 8 &amp; 9</b> <b>T. 8 N. R. 12 W. S. B. M.</b> <b>SECTIONS 7, 8, 9, 10, 11 &amp; 12</b> <b>T. 8 N. R. 13 W. S. B. M.</b> BASIS OF BEARINGS CALIFORNIA COORDINATE SYSTEM, ZONE 7	COUNTY SURVEYOR'S MAP NO. <b>B-5462</b> SHEET 3 OF 4 SHEETS FILED: 5/21/1984 SURVEYED JULY 1969 - SEPT. 1970 REFERENCE F.B. 0-1031 F.B. 3489 F.B. 3604 F.B. 0-1032 F.B. 3862 F.B. 3176 JOB NUMBER 0208.11 INDEX MAP NO. 71
--	---	---



NOTE :  
THIS MAP WAS FILED FOR THE PURPOSE OF  
ESTABLISHING SECTION LINES. ALL OTHER  
CADASTRAL DATA HAS BEEN OMITTED.



COUNTY OF LOS ANGELES DEPARTMENT OF PUBLIC WORKS T.A. TIDEMANSON - COUNTY ENGINEER PREPARED BY MAPPING DIVISION ARMANDO CID DIVISION ENGINEER SURVEYED BY J. MENDONCA CHECKED BY B. WILABLO DRAWN BY S. MASUDA	MAP OF <b>SECTIONS 7, 8 &amp; 9</b> <b>T.8 N. R.12.W S.B.M.</b> <b>SECTIONS 7, 8, 9, 10, 11 &amp; 12</b> <b>T.8 N. R.13 W. S.B.M.</b> BASIS OF BEARINGS CALIFORNIA COORDINATE SYSTEM, ZONE 7	COUNTY SURVEYOR'S MAP NO <b>B-5462</b> SHEET 4 OF 4 SHEETS FILED: 5/21/1988 DEPT. OF PUBLIC WORKS SURVEYED JULY 1969 - SEPT. 1970 REFERENCE F.B.0-1031 F.B.3489 F.B.3604 F.B.6-1032 F.B.3862 F.B.3176 JOB NUMBER INDEX MAP NO 0208.21 71
	COUNTY OF LOS ANGELES DEPARTMENT OF PUBLIC WORKS T.A. TIDEMANSON - COUNTY ENGINEER PREPARED BY MAPPING DIVISION ARMANDO CID DIVISION ENGINEER SURVEYED BY J. MENDONCA CHECKED BY B. WILABLO DRAWN BY S. MASUDA	