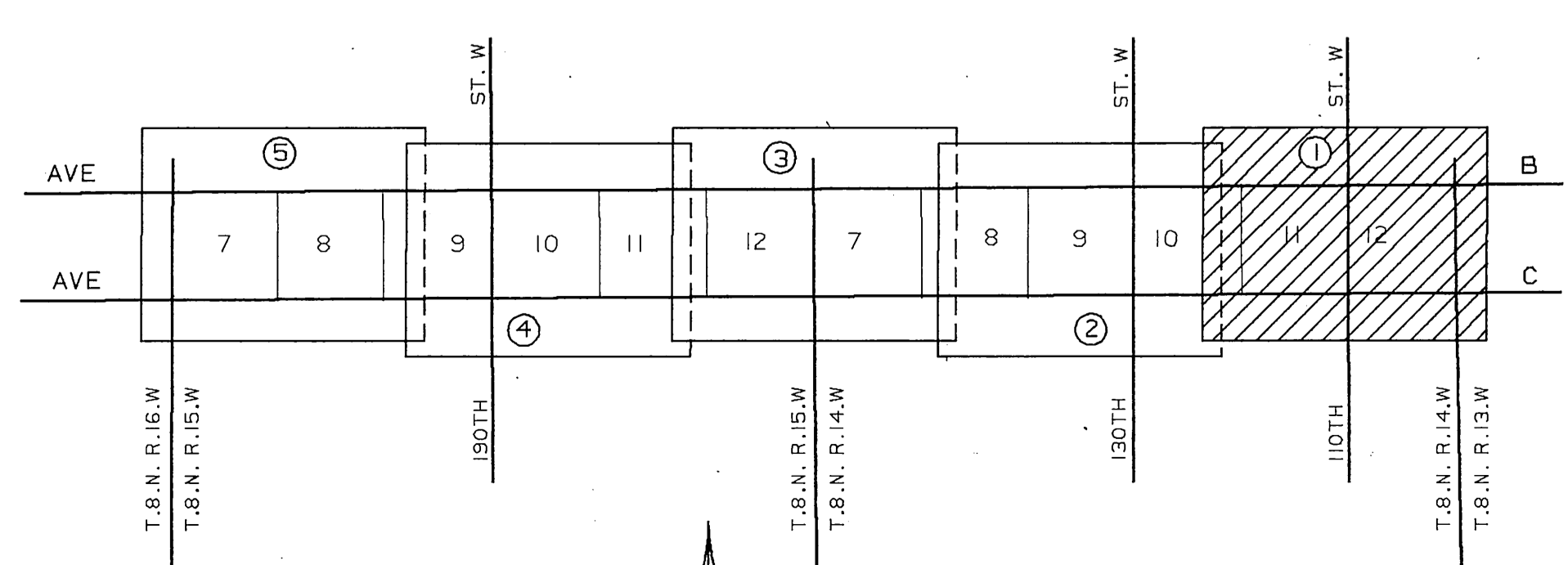
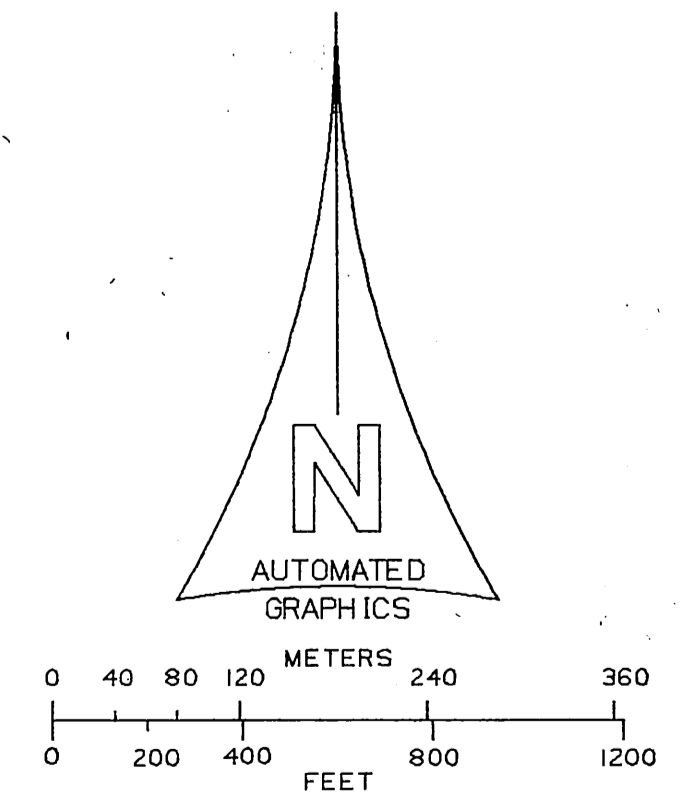


MATCH LINE C.S.B-5463-2

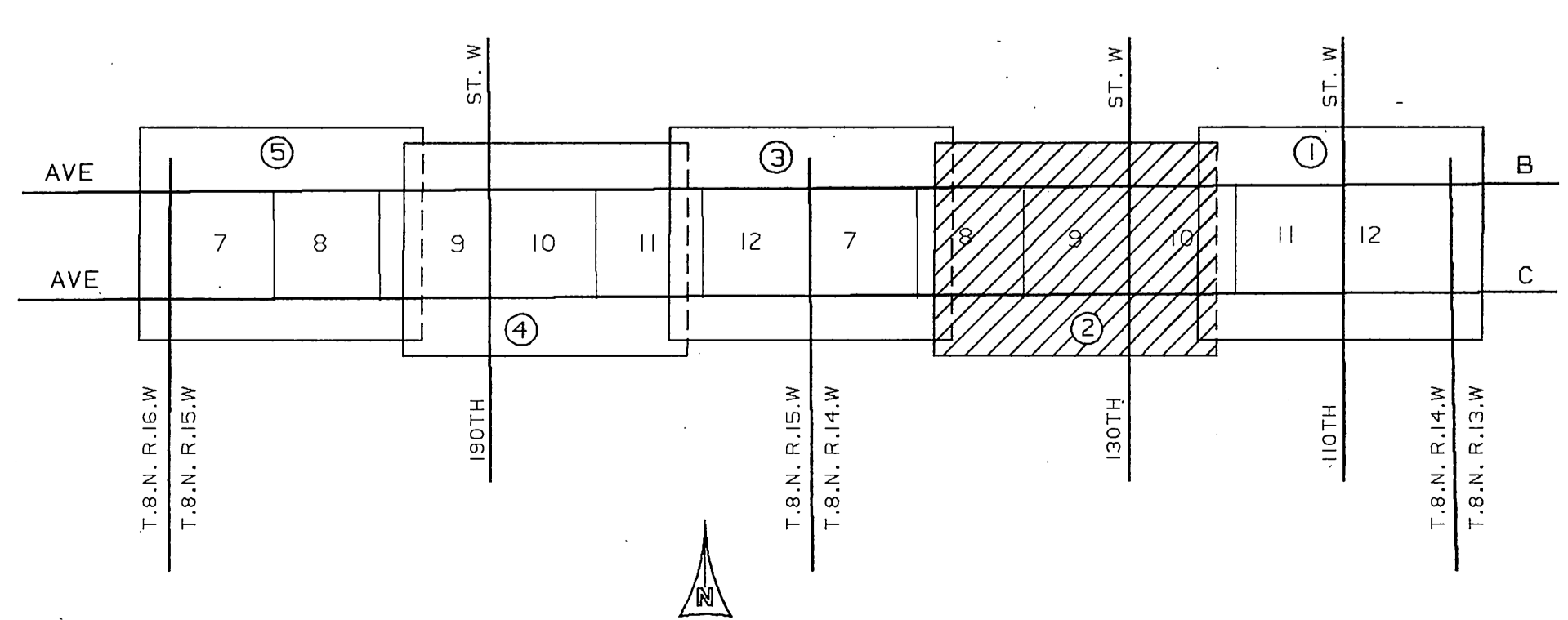
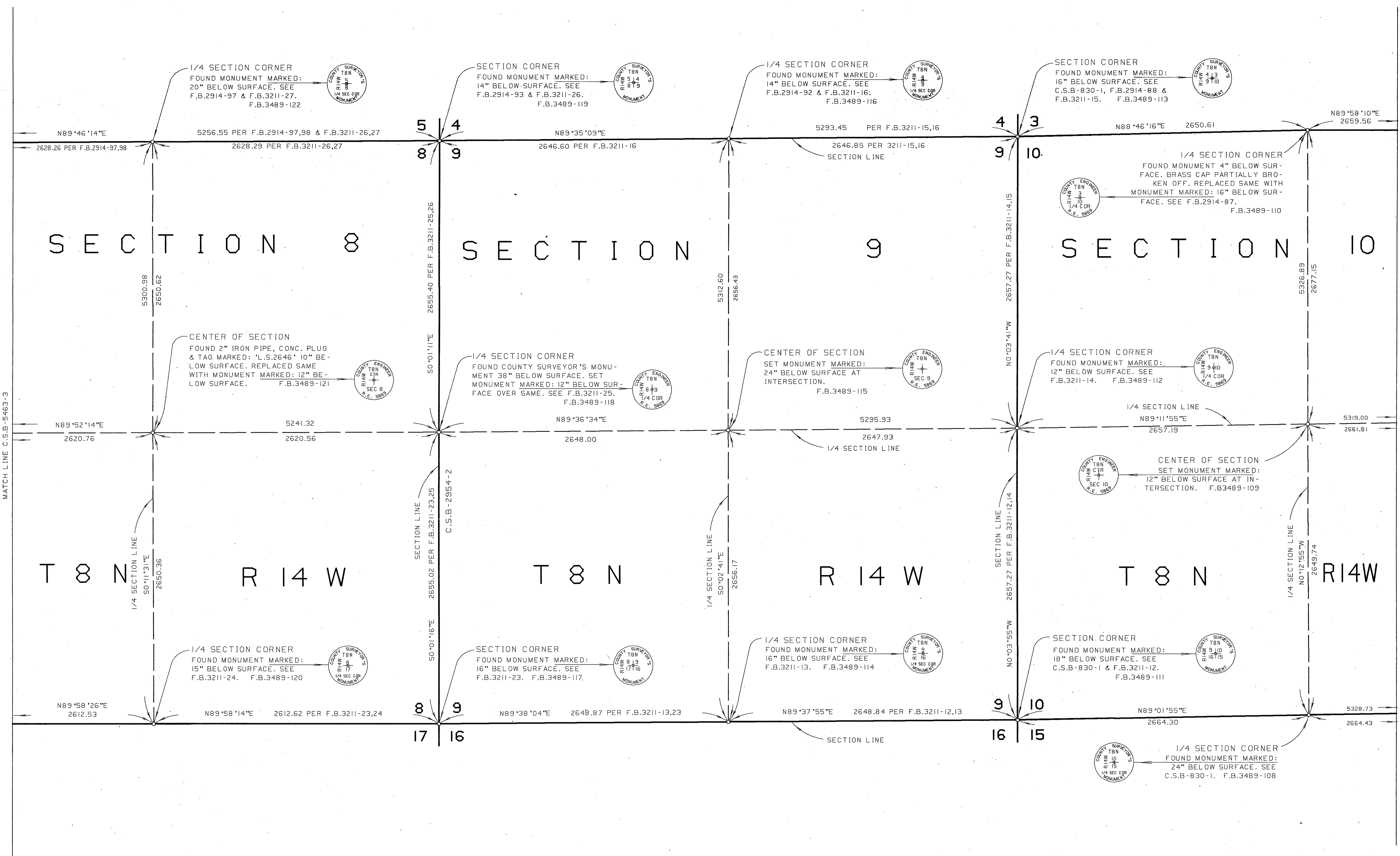
T 8 N R 14 W T 8 N R 14 W T 8 N R 14 W



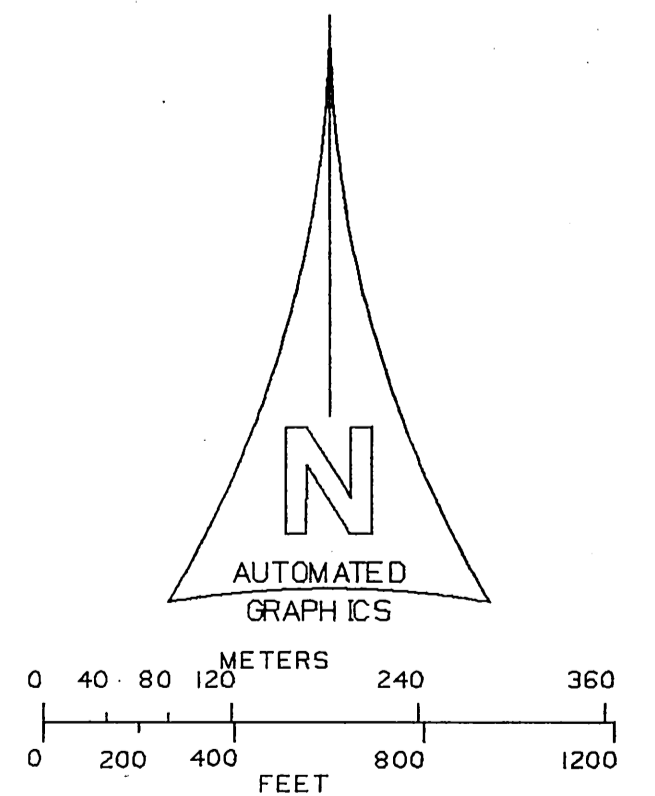
NOTE :
THIS MAP WAS FILED FOR THE PURPOSE OF
ESTABLISHING SECTION LINES. ALL OTHER
CADASTRAL DATA HAS BEEN OMITTED.



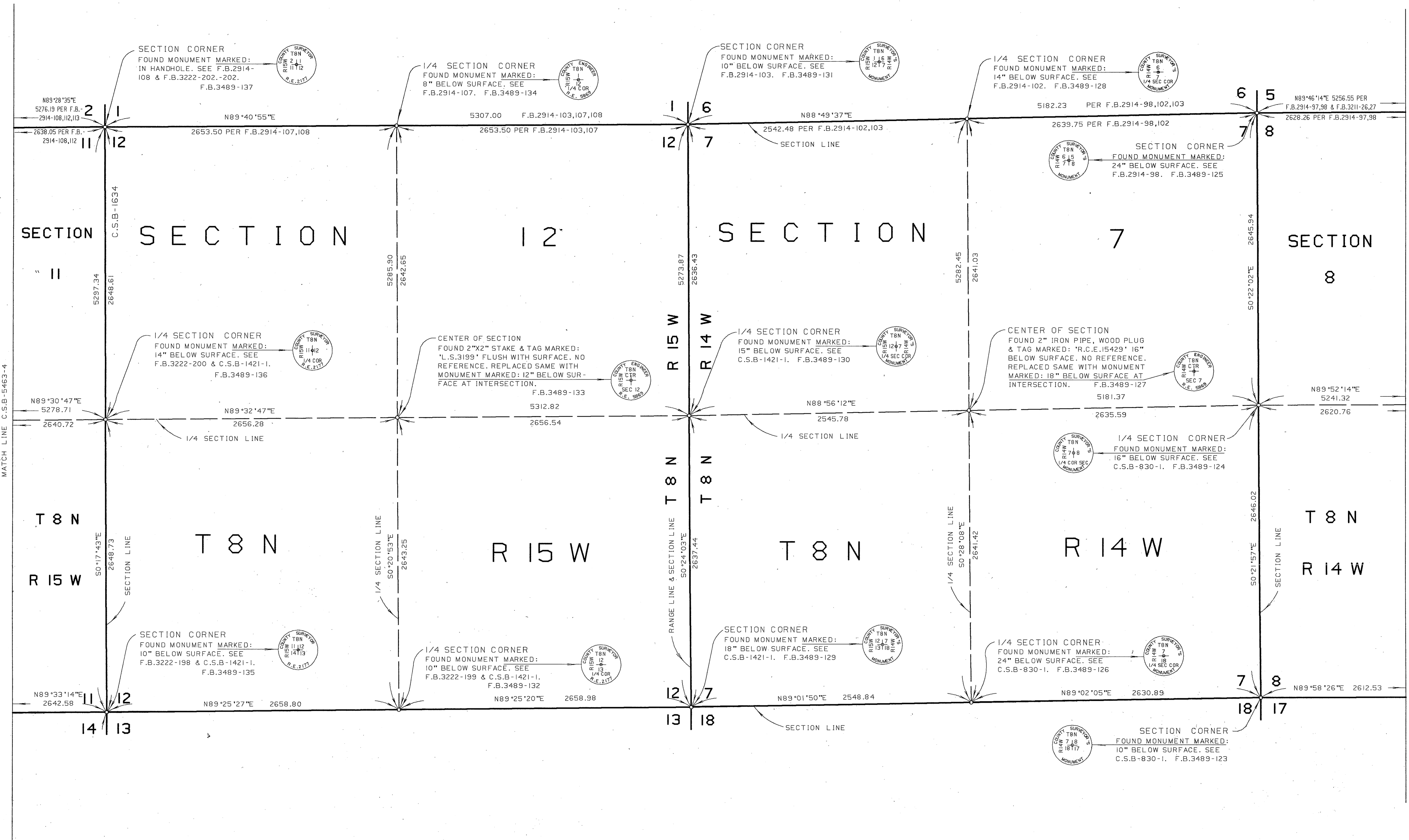
COUNTY OF LOS ANGELES DEPARTMENT OF PUBLIC WORKS T.A.TIDEMANSON - COUNTY ENGINEER PREPARED BY MAPPING DIVISION ARMANDO CID DIVISION ENGINEER SURVEYED BY J. MENDOZA CHECKED BY P. WILABLO DRAWN BY G. MASUDA	MAP OF SECTIONS 7,8,9,10,11 & 12 T.8 N. R.14 W. S.B.M. SECTIONS 7,8,9,10,11 & 12 T.8 N. R.15 W. S.B.M.	COUNTY SURVEYOR'S MAP NO B-5463 SHEET 1 OF 5 SHEETS FILED: <i>5/21/80</i> <i>Armando CID</i> SURVEYED JULY 1969 - SEPT. 1970 REFERENCE F.B.3489 F.B.3562 JOB NUMBER 0208.11 INDEX MAP NO 72.73
	BASIS OF BEARINGS CALIFORNIA COORDINATE SYSTEM, ZONE 7 AS SHOWN ON C.S.B-5462	



NOTE :
THIS MAP WAS FILED FOR THE PURPOSE OF
ESTABLISHING SECTION LINES. ALL OTHER
CADASTRAL DATA HAS BEEN OMITTED.

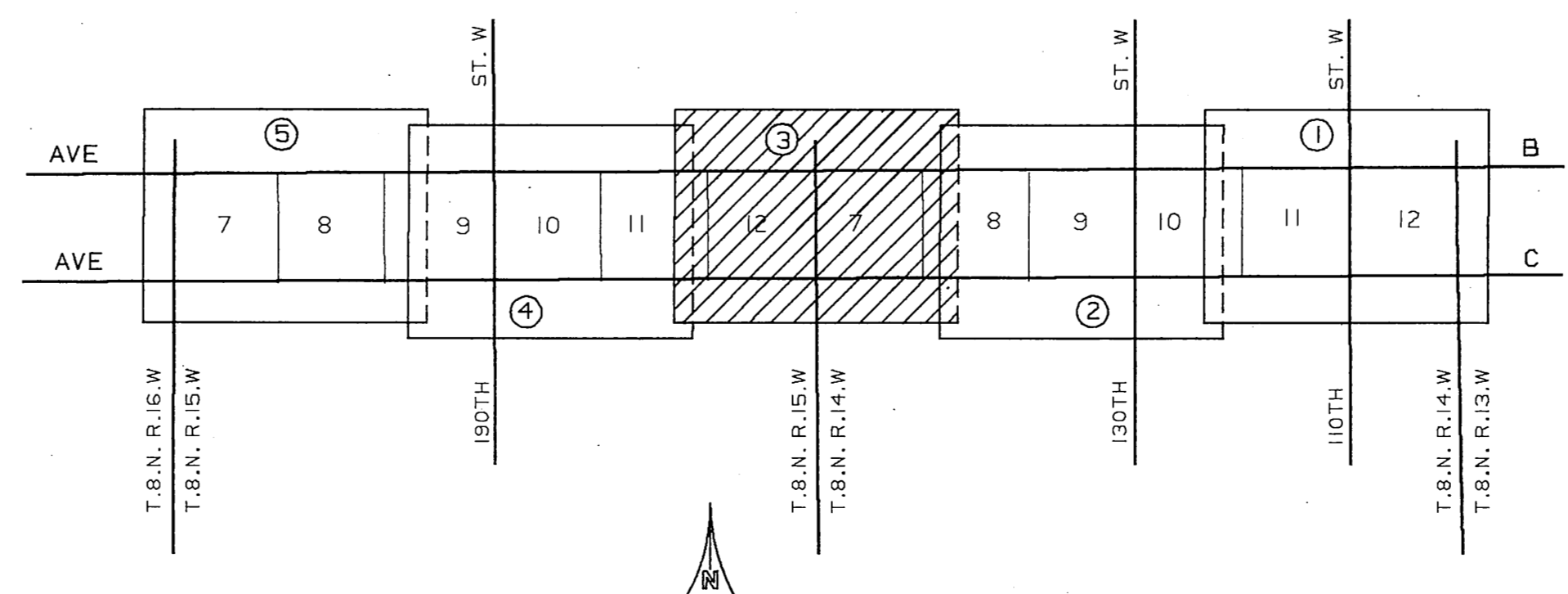


COUNTY OF LOS ANGELES DEPARTMENT OF PUBLIC WORKS T.A. TIDEMANSON - COUNTY ENGINEER MAPPING DIVISION ARMANDO CID DIVISION ENGINEER SURVEYED BY <u>J. MENDOZA</u> CHECKED BY <u>R. HILARIO</u> DRAWN BY <u>S. MASUDA</u>	MAP OF SECTIONS 7,8,9,10,11 & 12 T.8 N. R.14 W. S.B.M. SECTIONS 7,8,9,10,11 & 12 T.8 N. R.15 W. S.B.M.		COUNTY SURVEYOR'S MAP NO B-5463 SHEET 2 OF 5 SHEETS FILED: <u>5/21/1979</u> <u>Armando Cid</u> SURVEYED JULY 1969 - SEPT. 1970 REFERENCE F.B. 3489 F.B. 3882 JOB NUMBER 0208.11 INDEX MAP NO 72.73
	BASIS OF BEARINGS CALIFORNIA COORDINATE SYSTEM, ZONE 7 AS SHOWN ON C.S.B-5462		
	COUNTY SURVEYOR'S MAP NO B-5463 SHEET 2 OF 5 SHEETS FILED: <u>5/21/1979</u> <u>Armando Cid</u> SURVEYED JULY 1969 - SEPT. 1970 REFERENCE F.B. 3489 F.B. 3882 JOB NUMBER 0208.11 INDEX MAP NO 72.73		
	BASIS OF BEARINGS CALIFORNIA COORDINATE SYSTEM, ZONE 7 AS SHOWN ON C.S.B-5462		
	COUNTY SURVEYOR'S MAP NO B-5463 SHEET 2 OF 5 SHEETS FILED: <u>5/21/1979</u> <u>Armando Cid</u> SURVEYED JULY 1969 - SEPT. 1970 REFERENCE F.B. 3489 F.B. 3882 JOB NUMBER 0208.11 INDEX MAP NO 72.73		

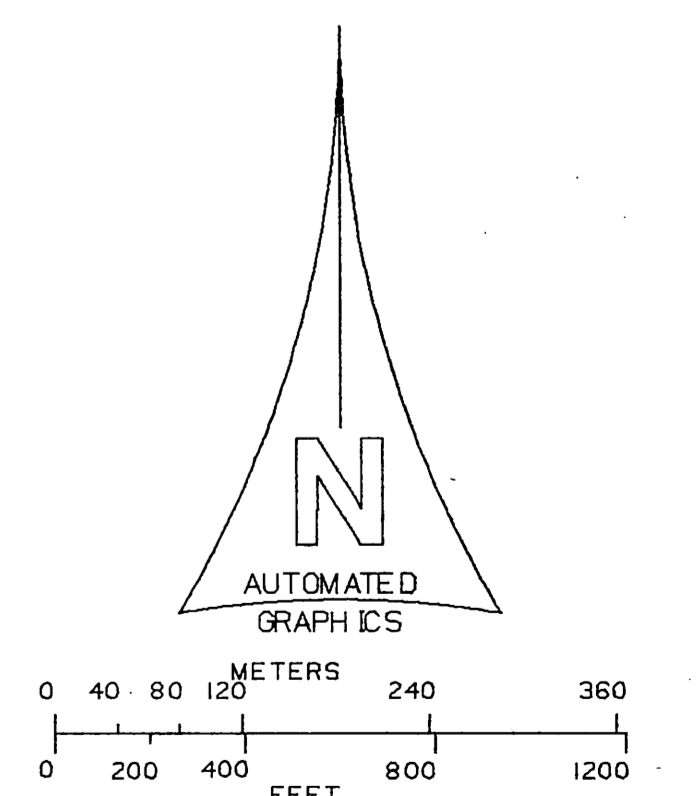


MATCH LINE C.S.B-5463-4

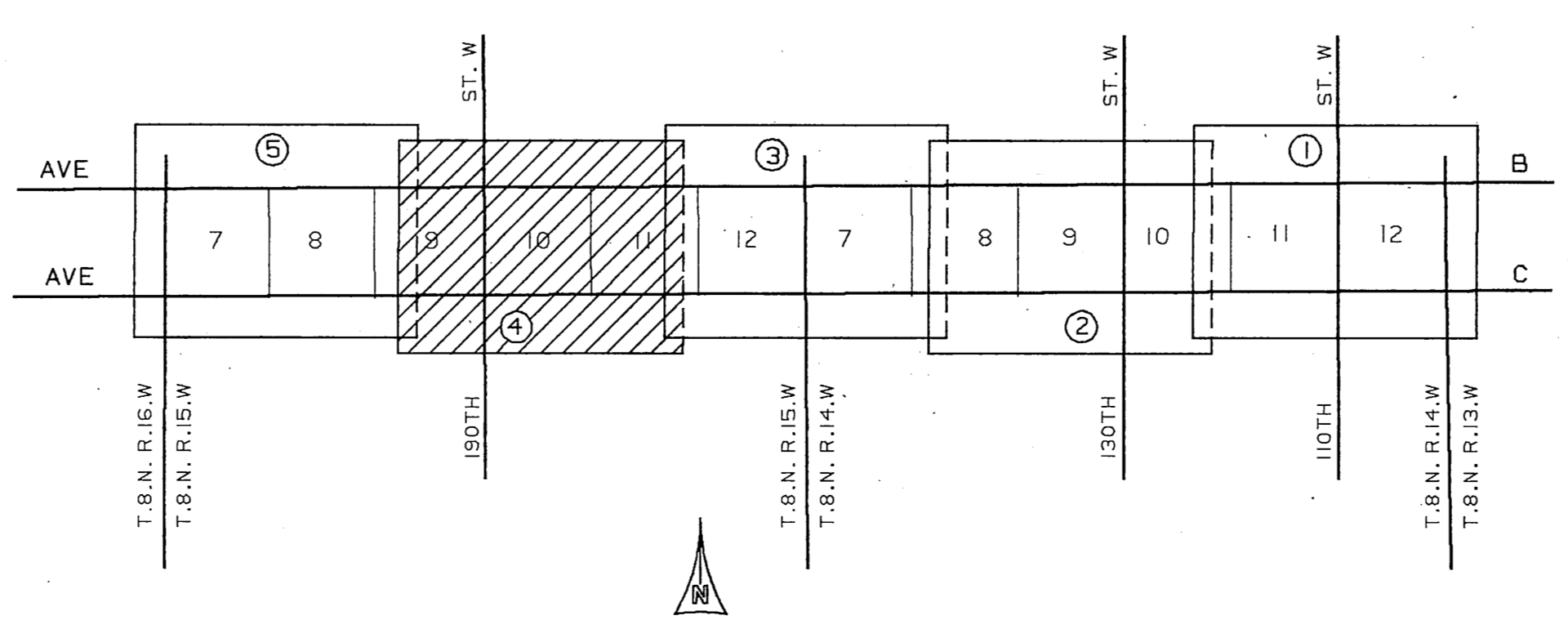
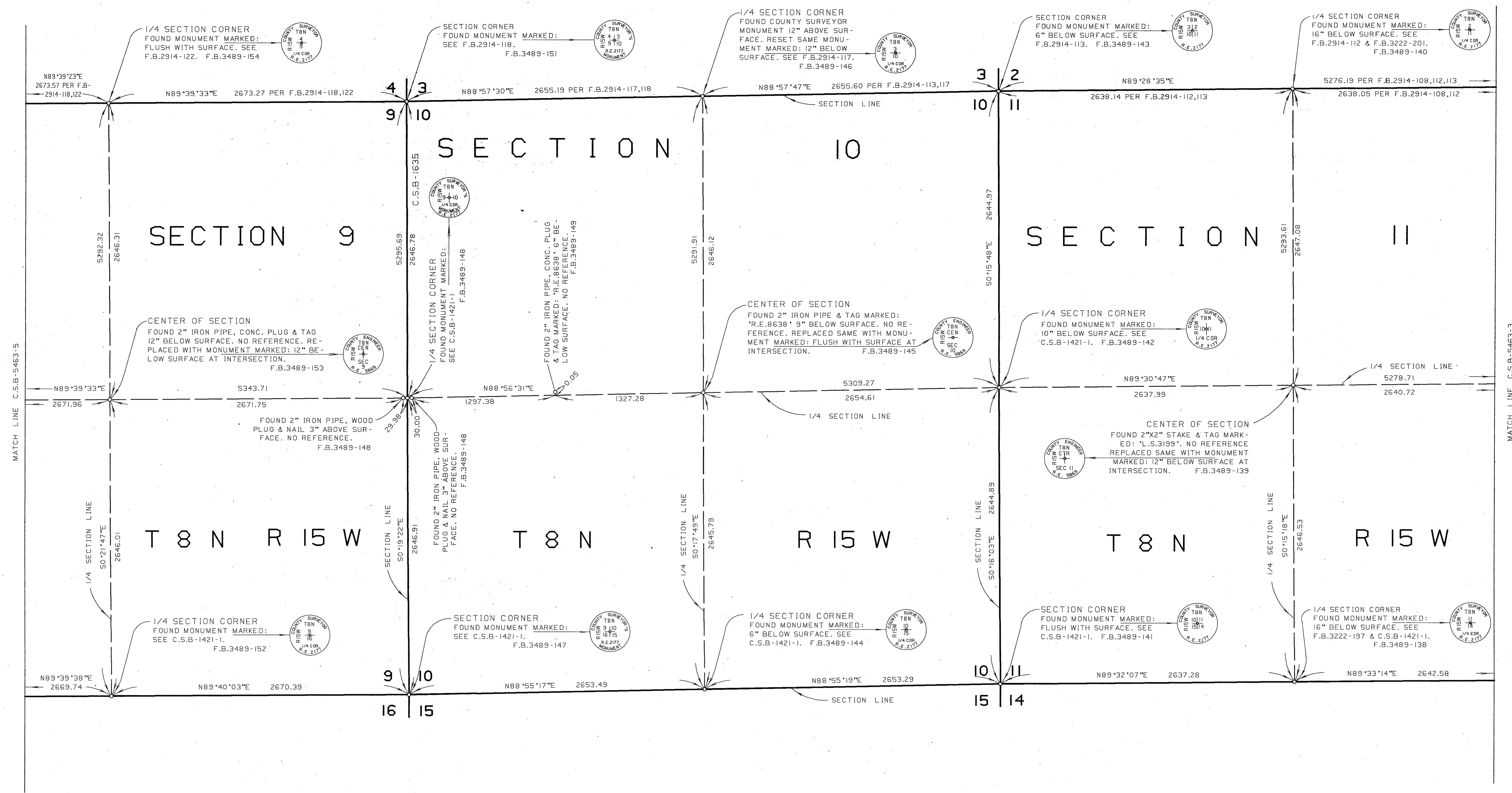
MATCH LINE C.S.B-5463-2



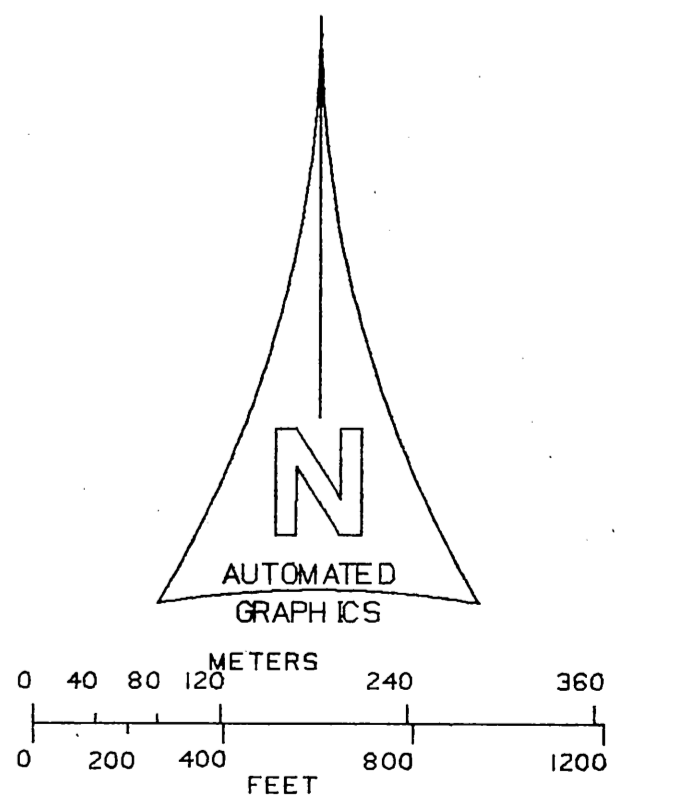
NOTE :
 THIS MAP WAS FILED FOR THE PURPOSE OF
 ESTABLISHING SECTION LINES. ALL OTHER
 CADASTRAL DATA HAS BEEN OMITTED.



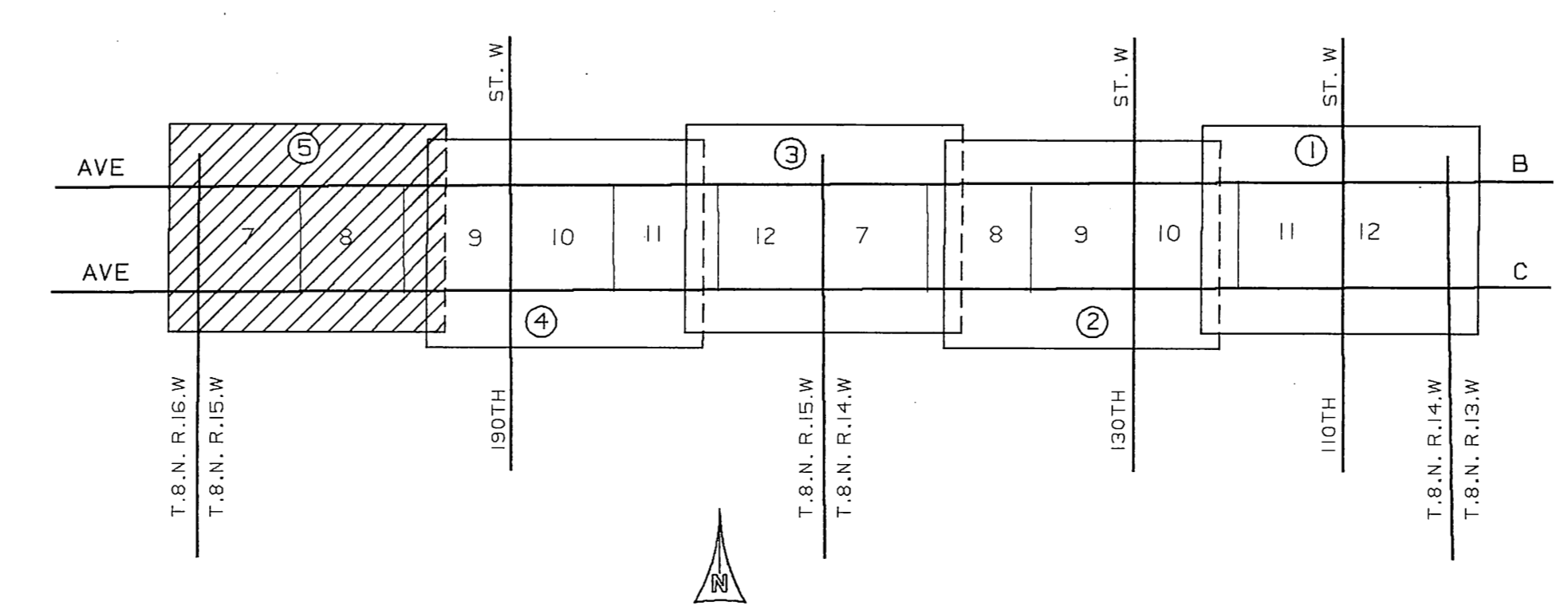
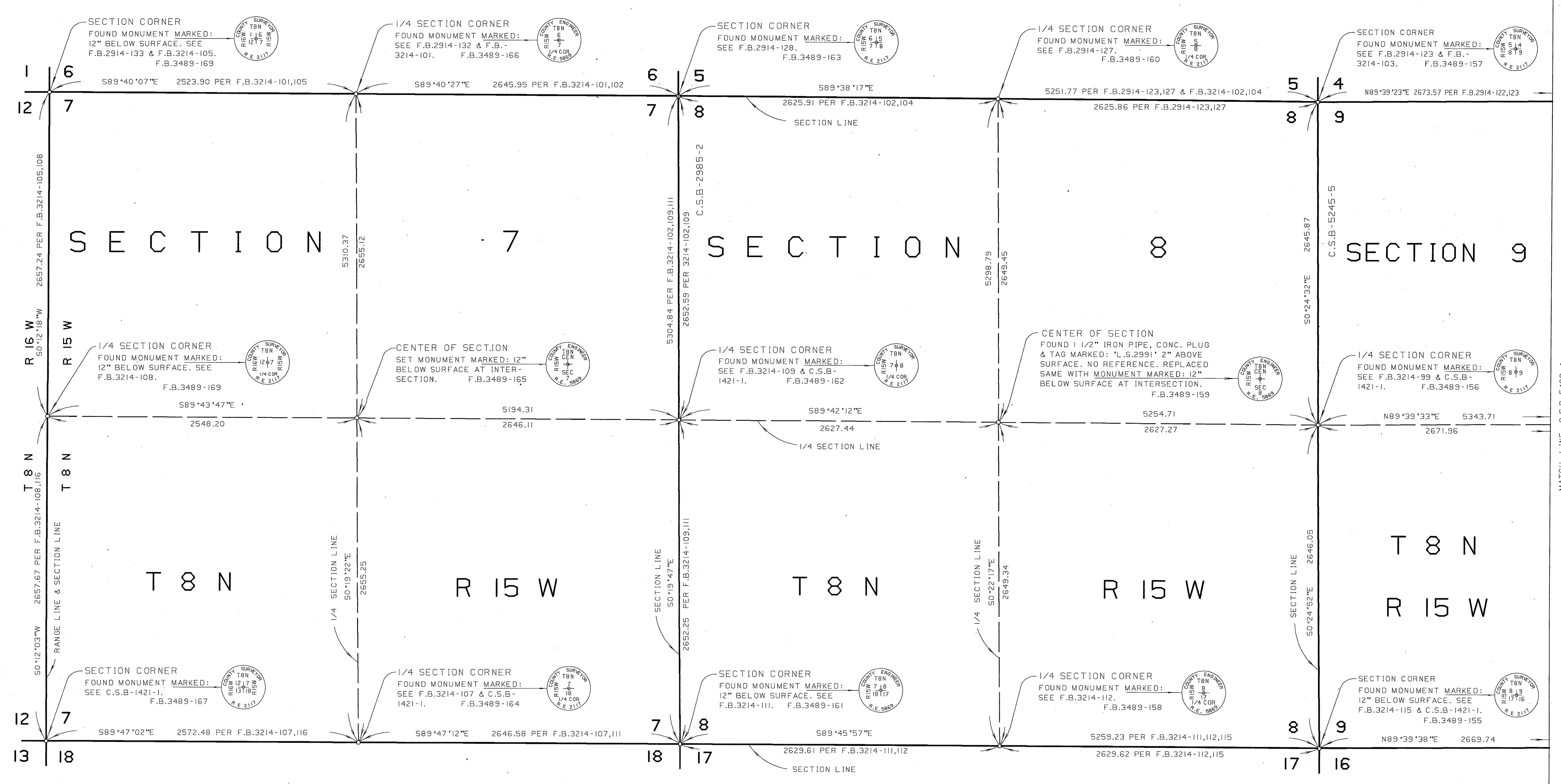
COUNTY OF LOS ANGELES DEPARTMENT OF PUBLIC WORKS T.A. DICEMANSON - COUNTY ENGINEER PREPARED BY MAPPING DIVISION ARMANDO CID DIVISION ENGINEER SURVEYED BY J. MENDONCA CHECKED BY R. HILARIO DRAWN BY G. MASUDA	MAP OF SECTIONS 7,8,9,10,11 & 12 T.8 N. R.14 W. S.B.M. SECTIONS 7,8,9,10,11 & 12 T.8 N. R.15 W. S.B.M.	COUNTY SURVEYOR'S MAP NO B-5463 SHEET 3 OF 5 SHEETS FILED: 5/25/85 DEPUTY SURVEYED JULY 1963 - SEPT. 1970 REFERENCE F.B.3489 F.B.3862 JOB NUMBER 0208.11 INDEX MAP NO 72.73
	BASIS OF BEARINGS CALIFORNIA COORDINATE SYSTEM, ZONE 7 AS SHOWN ON C.S.B-5462	



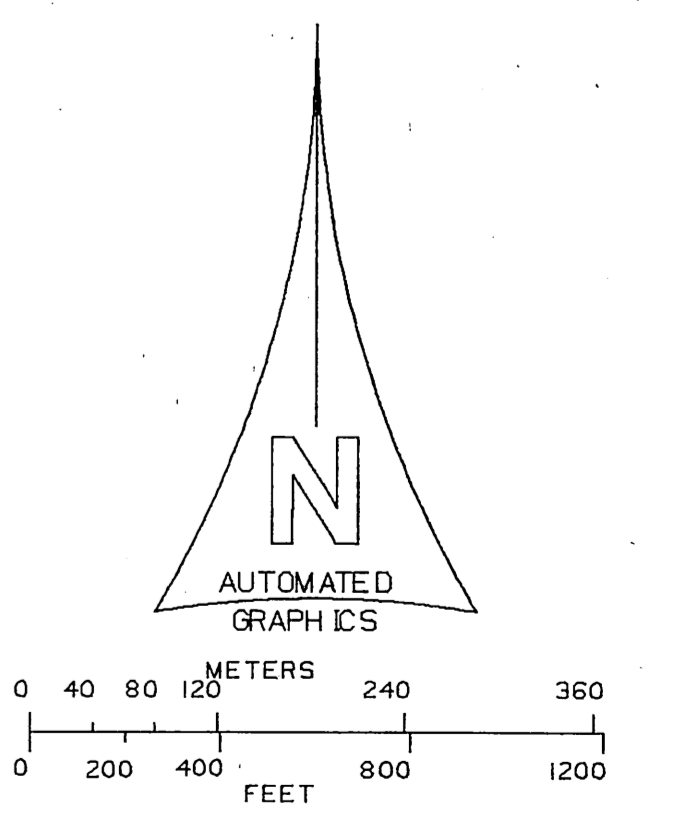
NOTE :
 THIS MAP WAS FILED FOR THE PURPOSE OF ESTABLISHING SECTION LINES. ALL OTHER CADASTRAL DATA HAS BEEN OMITTED.



COUNTY OF LOS ANGELES DEPARTMENT OF PUBLIC WORKS T.A. TIDEMANSON - COUNTY ENGINEER PREPARED BY MAPPING DIVISION ARMANDO CID DIVISION ENGINEER SURVEYED BY J. MENDOZA CHECKED BY B. HILARIO DRAWN BY S. MASUDA	MAP OF SECTIONS 7,8,9,10,11 & 12 T.8 N. R.14 W. S.B.M. SECTIONS 7,8,9,10,11 & 12 T.8 N. R.15 W. S.B.M.	COUNTY SURVEYOR'S MAP NO B-5463 SHEET 4 OF 5 SHEETS FILED: 8/21/88 DEPUTY SURVEYED JULY 1969 - SEPT. 1970 REFERENCE F.B. 3489 F.B. 3882 JOB NUMBER 0208.11
	BASIS OF BEARINGS CALIFORNIA COORDINATE SYSTEM, ZONE 7 AS SHOWN ON C.S.B-5462	



NOTE :
THIS MAP WAS FILED FOR THE PURPOSE OF
ESTABLISHING SECTION LINES. ALL OTHER
CADASTRAL DATA HAS BEEN OMITTED.



COUNTY OF LOS ANGELES DEPARTMENT OF PUBLIC WORKS T.A. DICAMANSON - COUNTY ENGINEER PREPARED BY MAPPING DIVISION ARMANDO CID DIVISION ENGINEER SURVEYED BY <u>J. MENDONCA</u> CHECKED BY <u>R. HILARIO</u> DRAWN BY <u>S. MASUDA</u>	MAP OF SECTIONS 7,8,9,10,11 & 12 T.8 N. R.14 W. S.B.M. SECTIONS 7,8,9,10,11 & 12 T.8 N. R.15 W. S.B.M.	COUNTY SURVEYOR'S MAP NO B-5463 SHEET 5 OF 5 SHEETS FILED: <u>[Signature]</u> DEPUTY SURVEYED JULY 1969 - SEPT. 1970 REFERENCE F.B.3489 F.B.3862 JOB NUMBER 0208.11 INDEX MAP NO 72,73
	BASIS OF BEARINGS CALIFORNIA COORDINATE SYSTEM, ZONE 7 AS SHOWN ON C.S.B-5462	