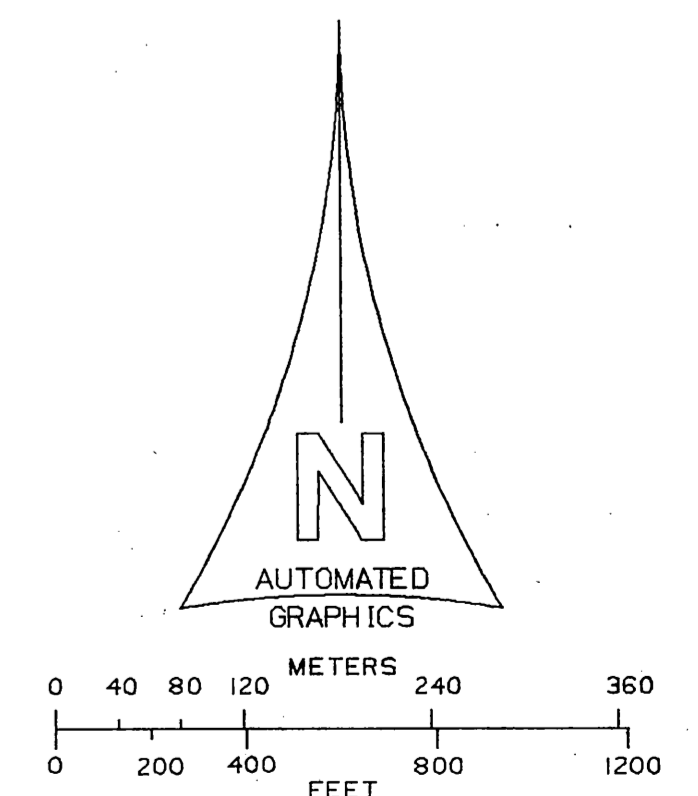
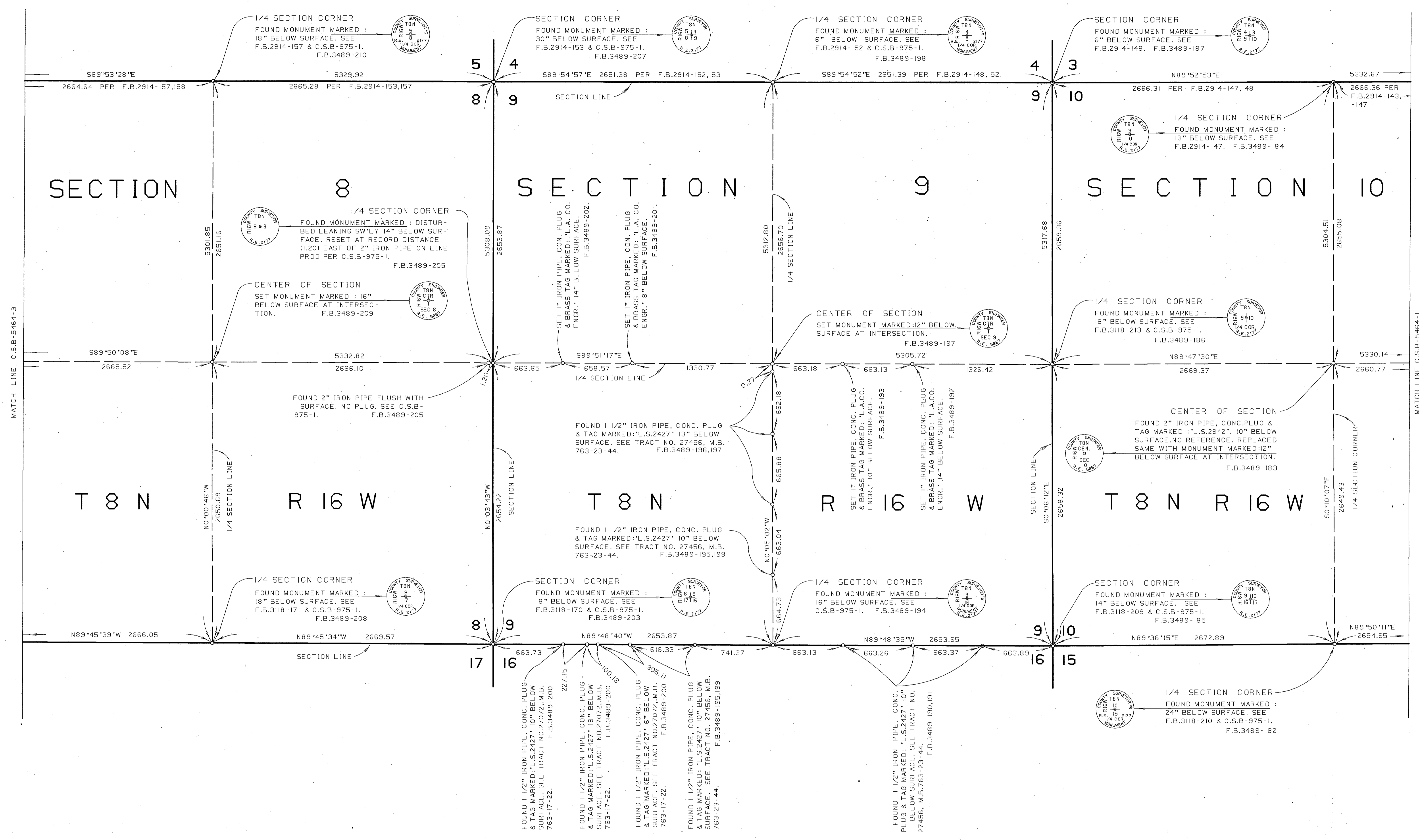


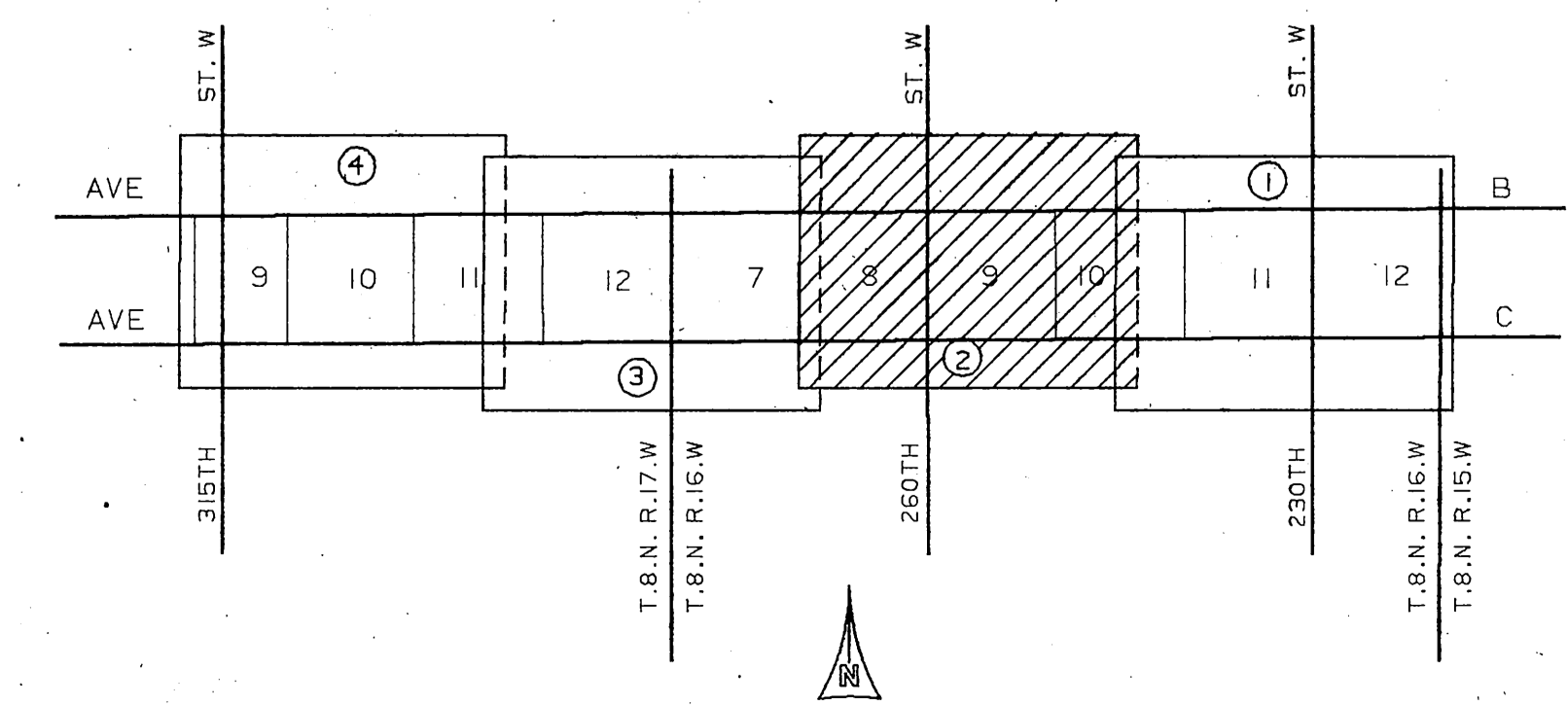
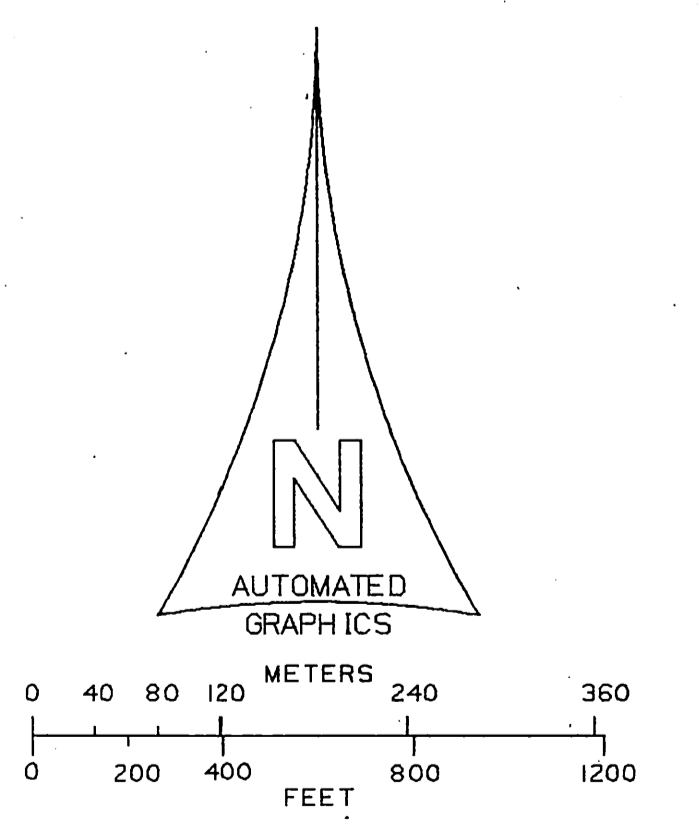
NOTE :
THIS MAP WAS FILED FOR THE PURPOSE OF
ESTABLISHING SECTION LINES. ALL OTHER
CADASTRAL DATA HAS BEEN OMITTED.



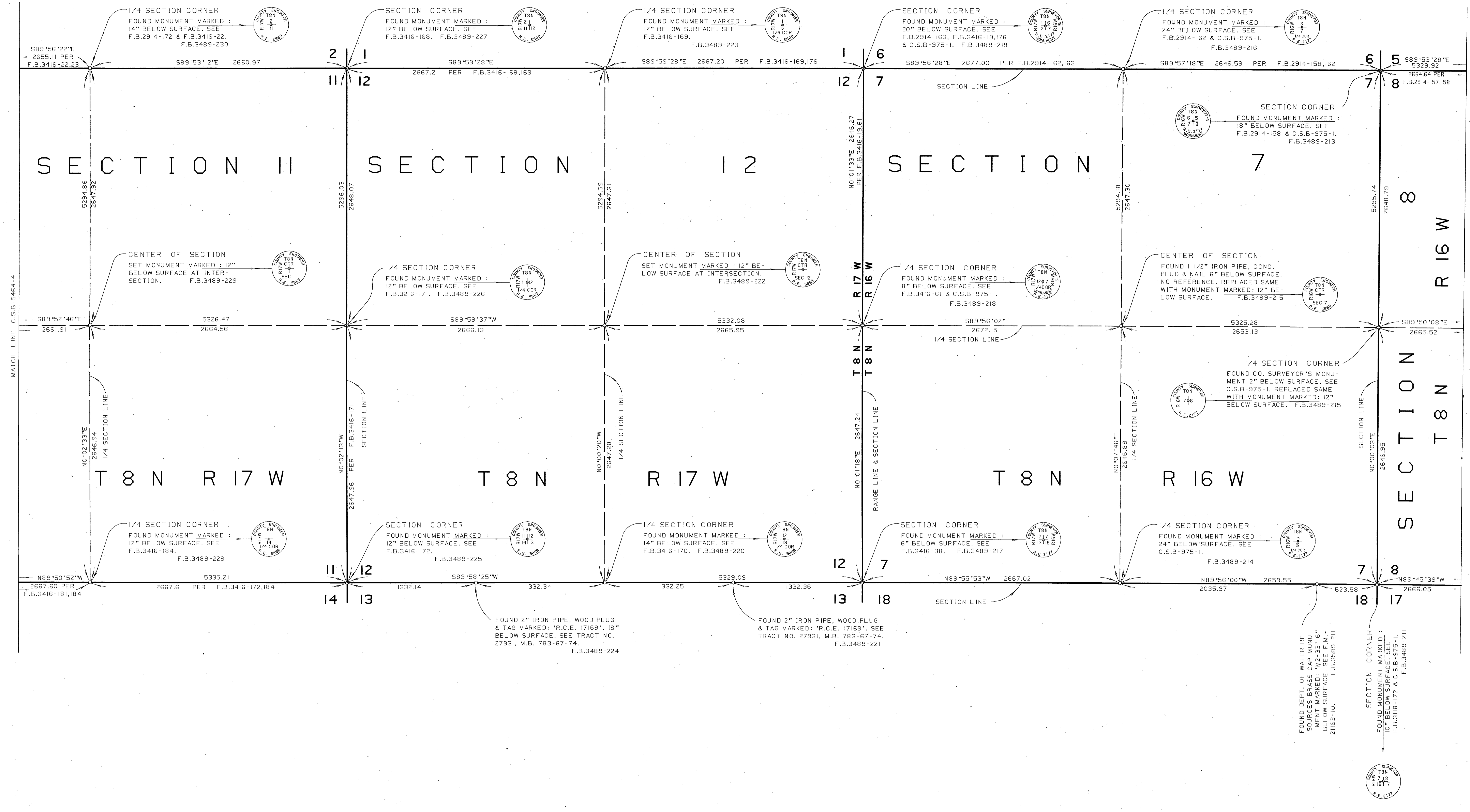
COUNTY OF LOS ANGELES DEPARTMENT OF PUBLIC WORKS T.A. TIDEMANSON - COUNTY ENGINEER PREPARED BY MAPPING DIVISION ARMANDO CID DIVISION ENGINEER SURVEYED BY <u>J. MENDONCA</u> CHECKED BY <u>R. HILARIO</u> DRAWN BY <u>G. MASUDA</u>	MAP OF SECTIONS 7,8,9,10,11 & 12 T.8 N. R.16 W. S.B.M. SECTIONS 9,10,11 & 12 T.8 N. R.17 W. S.B.M.		COUNTY SURVEYOR'S MAP NO B-5464 SHEET 1 OF 4 SHEETS FILED: <u>1985</u> SURVEYED JULY 1963-SEPT. 1970 REFERENCE F.B.3489
	BASIS OF BEARINGS CALIFORNIA COORDINATE SYSTEM, ZONE 7 AS SHOWN ON C.S.B-5462		JOB NUMBER 0208.11 INDEX MAP NO 17.73



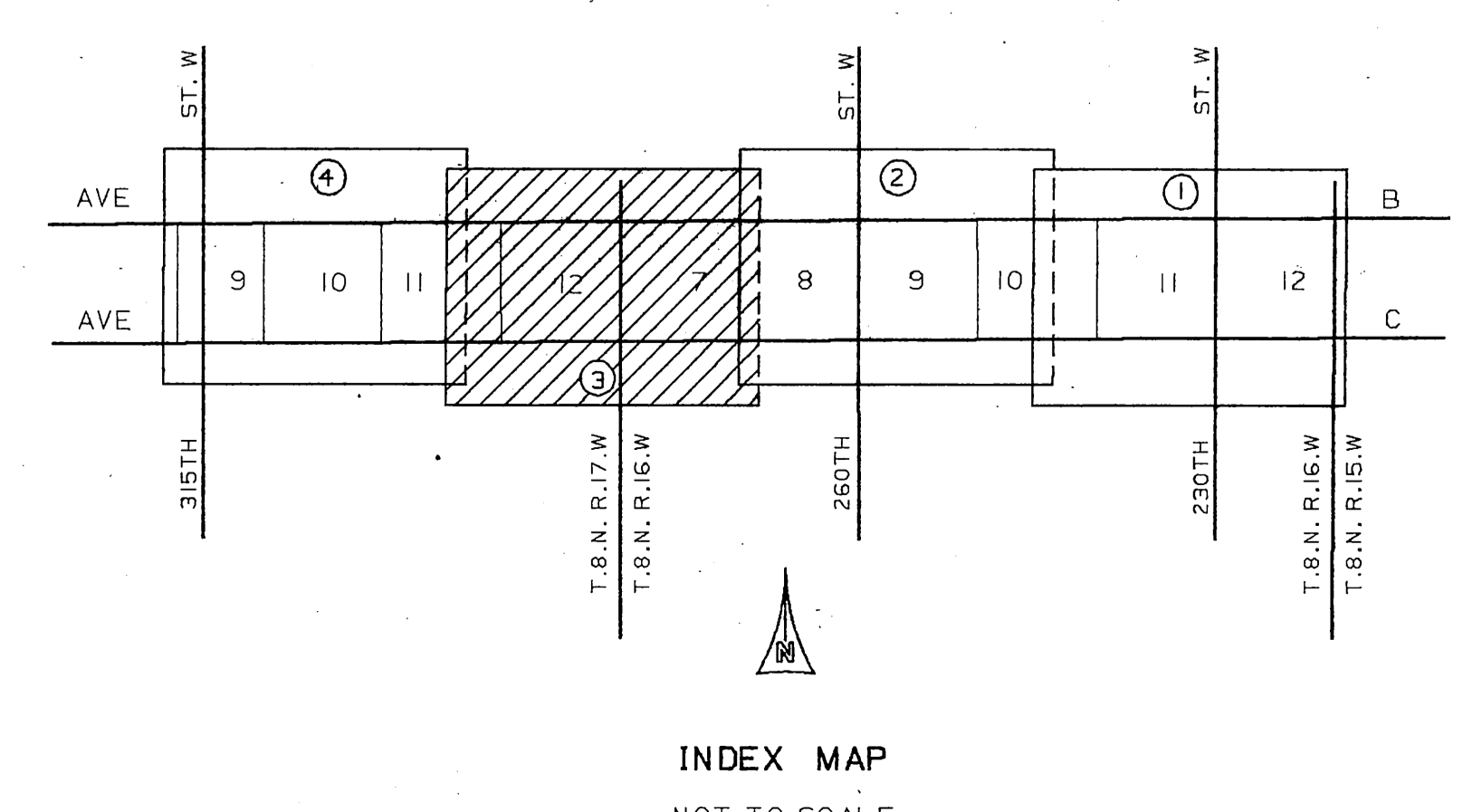
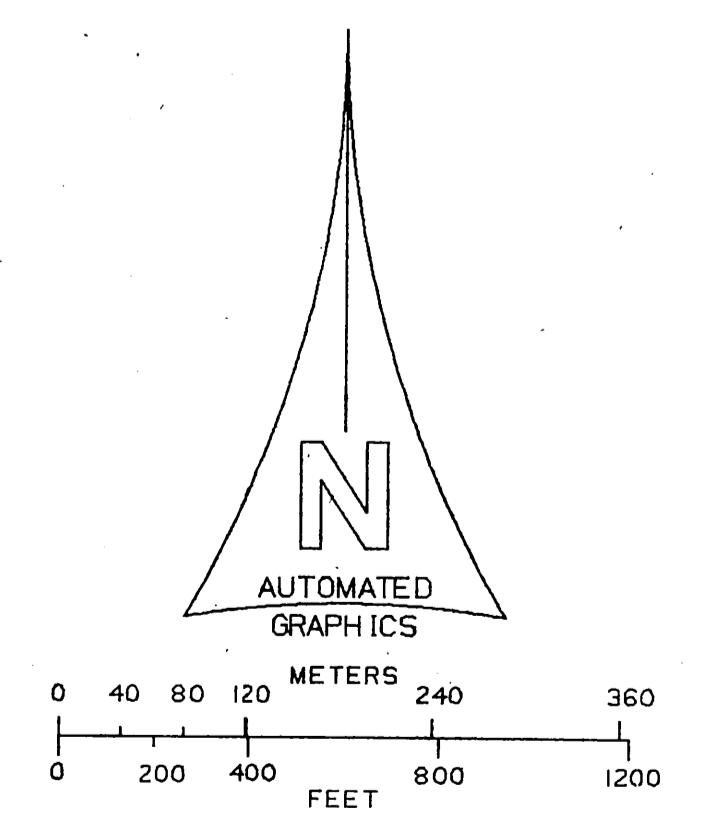
NOTE :
 THIS MAP WAS FILED FOR THE PURPOSE OF
 ESTABLISHING SECTION LINES. ALL OTHER
 CADASTRAL DATA HAS BEEN OMITTED.



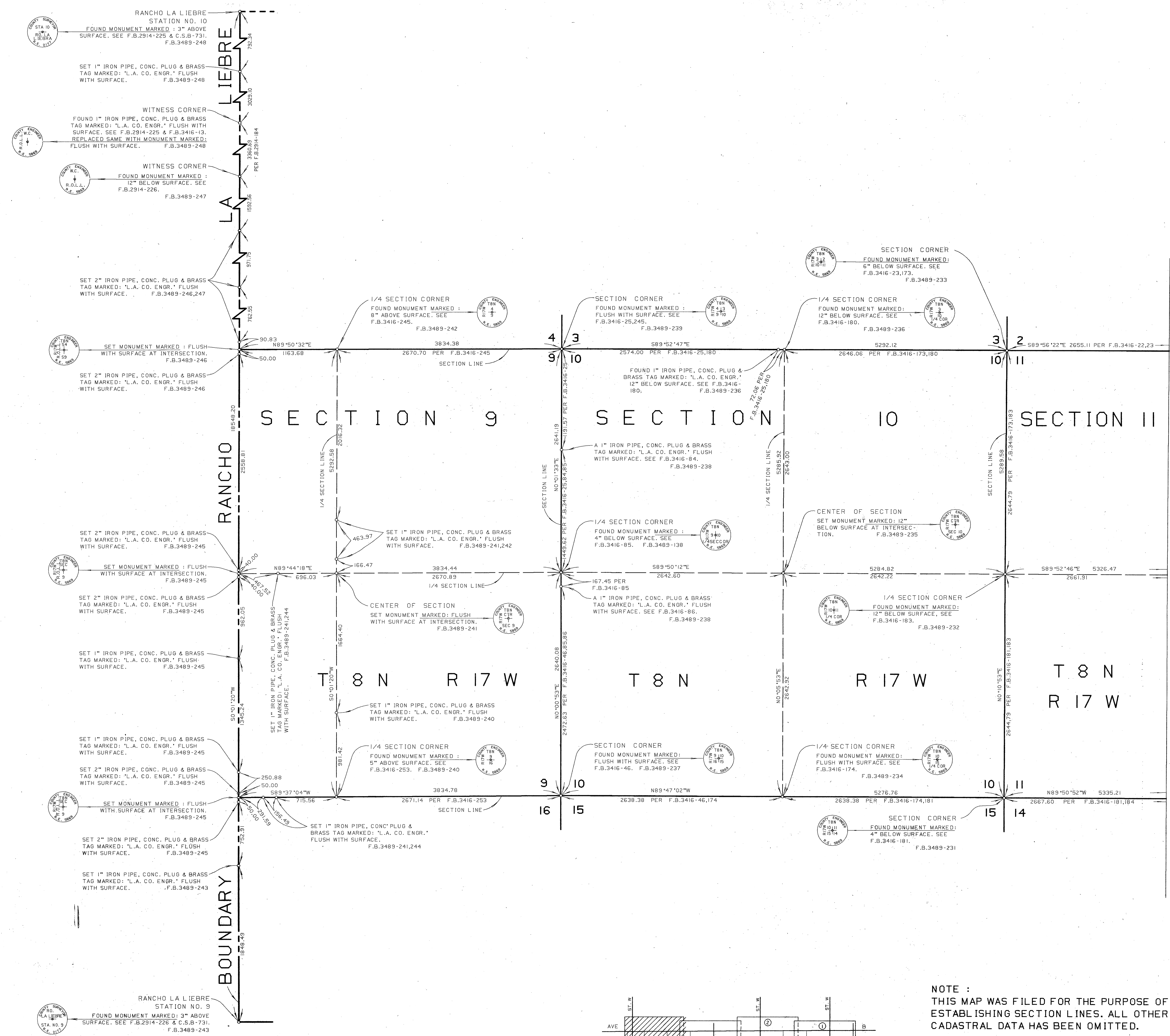
COUNTY OF LOS ANGELES DEPARTMENT OF PUBLIC WORKS T.A. TIDEMANSON - COUNTY ENGINEER PREPARED BY MAPPING DIVISION ARMANDO CID DIVISION ENGINEER SURVEYED BY J. MENDONCA CHECKED BY R. HILARIO DRAWN BY G. MASUDA	MAP OF SECTIONS 7,8,9,10,11 & 12 T.8 N. R.16 W. S.B.M. SECTIONS 9,10,11 & 12 T.8 N. R.17 W. S.B.M.		COUNTY SURVEYOR'S MAP NO B-5464 SHEET 2 OF 4 SHEETS FILED: <i>5/22/1986</i> DEPUTY SURVEYED JULY 1963 - SEPT. 1970 REFERENCE F.B.3489
	BASIS OF BEARINGS CALIFORNIA COORDINATE SYSTEM, ZONE 7 AS SHOWN ON C.S.B-5462		JOB NUMBER 0208.11 INDEX MAP NO 17 . 70



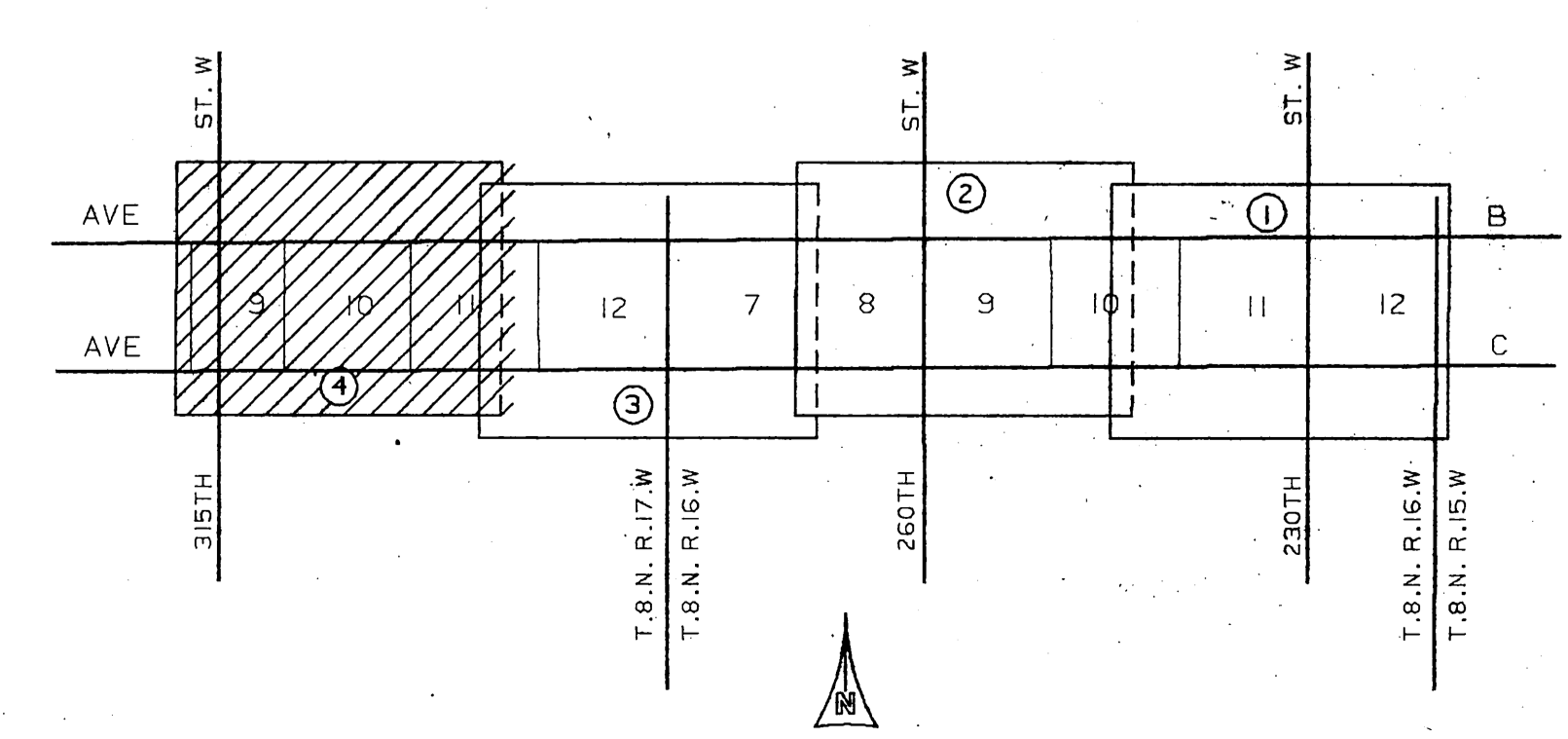
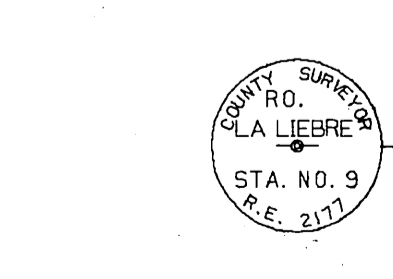
NOTE :
 THIS MAP WAS FILED FOR THE PURPOSE OF
 ESTABLISHING SECTION LINES. ALL OTHER
 CADASTRAL DATA HAS BEEN OMITTED.



COUNTY OF LOS ANGELES DEPARTMENT OF PUBLIC WORKS T.A. TICEMANSON - COUNTY ENGINEER PREPARED BY MAPPING DIVISION ARMANDO C. ID DIVISION ENGINEER SURVEYED BY J. MENDONCA CHECKED BY R. HILAR ID DRAWN BY S. MASUDA	MAP OF SECTIONS 7, 8, 9, 10, 11 & 12 T. 8 N. R. 16 W. S.B.M. SECTIONS 9, 10, 11 & 12 T. 8 N. R. 17 W. S.B.M. BASIS OF BEARINGS CALIFORNIA COORDINATE SYSTEM, ZONE 7 AS SHOWN ON C.S.B-5462	COUNTY SURVEYOR'S MAP NO B-5464 SHEET 3 OF 4 SHEETS FILED: 5/32/1987 DEPT. SURVEYED 1969 - SEPT. 1970 REFERENCE F.B.3489 JOB NUMBER 0208-11 INDEX MAP NO 17 - 70
---	---	---

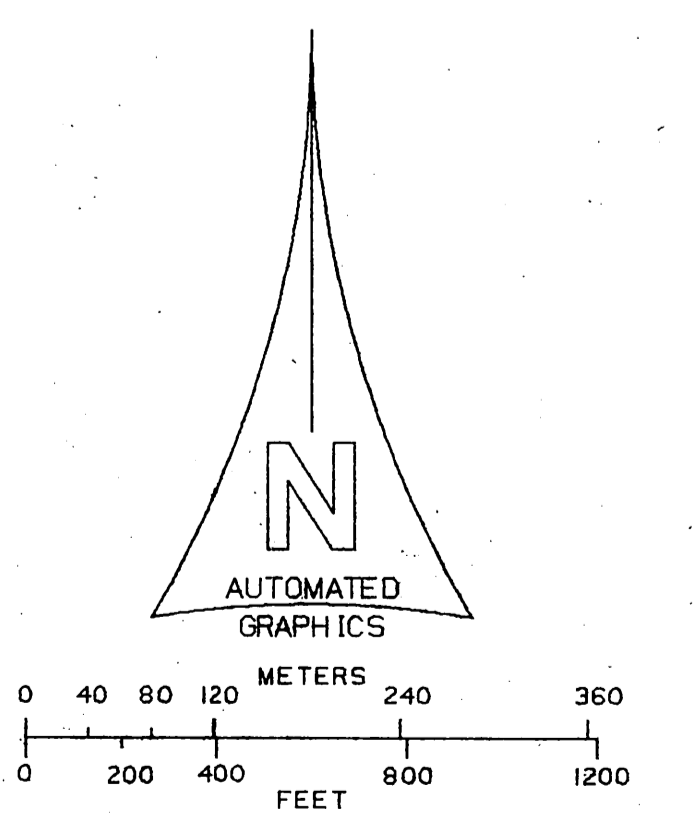


RANCHO LA LIEBRE
STATION NO. 9
FOUND MONUMENT MARKED: 3" ABOVE
SURFACE. SEE F.B.2914-226 & C.S.B-731.
F.B.3489-243



INDEX MAP
NOT TO SCALE

NOTE:
THIS MAP WAS FILED FOR THE PURPOSE OF
ESTABLISHING SECTION LINES. ALL OTHER
CADASTRAL DATA HAS BEEN OMITTED.



COUNTY OF LOS ANGELES DEPARTMENT OF PUBLIC WORKS T.A. TIDEMANSON - COUNTY ENGINEER PREPARED BY MAPPING DIVISION ARMANDO CID DIVISION ENGINEER SURVEYED BY <u>J.L. MENDONCA</u> CHECKED BY <u>B. HILARIO</u> DRAWN BY <u>G. MASUDA</u>	MAP OF SECTIONS 7,8,9,10,11 & 12 T.8 N. R.16 W. S.B.M. SECTIONS 9,10,11 & 12 T.8 N. R.17 W. S.B.M.	COUNTY SURVEYOR'S MAP NO B-5464 SHEET 4 OF 4 SHEETS FILED: <u>7/22/1970</u> DEPUTY SURVEYED JULY 1969 - SEPT. 1970 REFERENCE F.B.3489
	BASIS OF BEARINGS CALIFORNIA COORDINATE SYSTEM, ZONE 7 AS SHOWN ON C.S.B-5462	