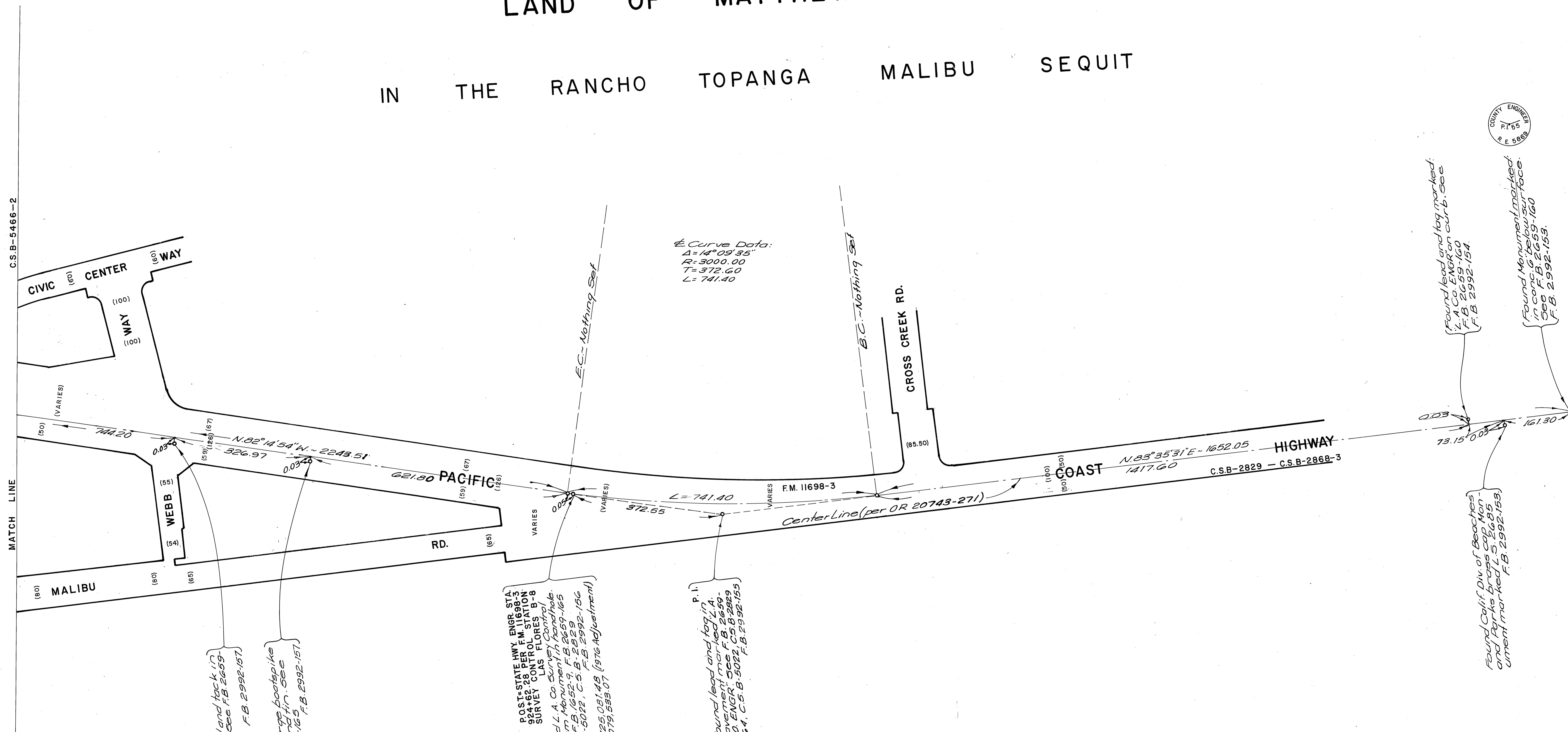


LAND OF MATTHEW KELLER
IN THE RANCHO TOPANGA MALIBU SEQUIT



Found lead and tag in
government, see F.B. 2659-
166 F.B. 2992-187

Found large boot spike
west and in, see
F.B. 2659-165 F.B. 2992-157

POST-STATE HWY. ENGR. STA.
924+62.28 PER F.M. 11698-3
SURVEY CONTROL POINT
LAS TORRES B-8
Found L.A. Co. center line
System Malibu, see F.B. 2659-165
See F.B. 1652-5, B-2229
C.S.B. 5022, C.S.B. 2992-156
N. 4, 125, 081, 48 (1976 Adjustment)
E. 4, 079, 558, 07

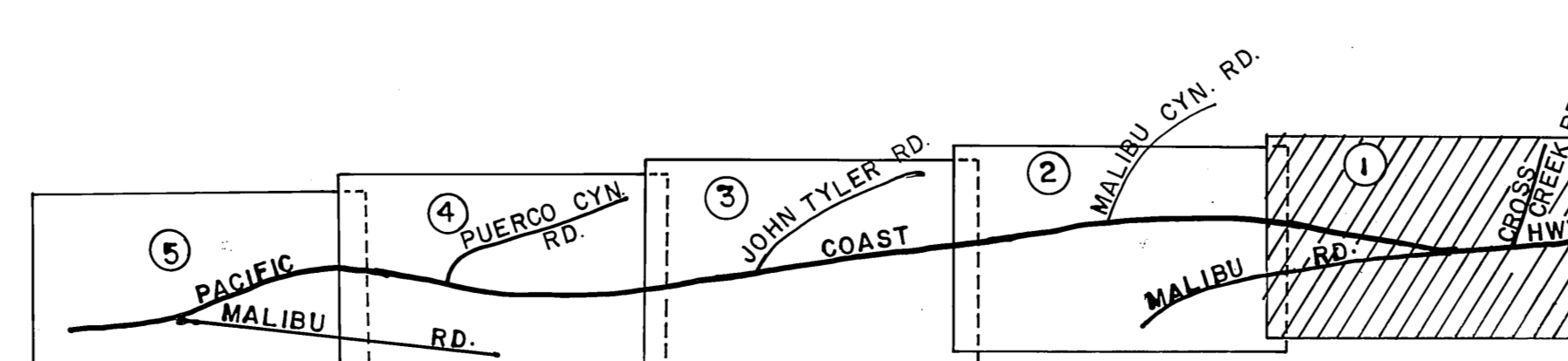
Found lead and tag in
government, see F.B. 2659-
164, C.S.B. 9-2022, C.S.B. 2992-155

Found lead and tag marked
in corr. 1/2' below surface
see F.B. 2659-160
F.B. 2992-154

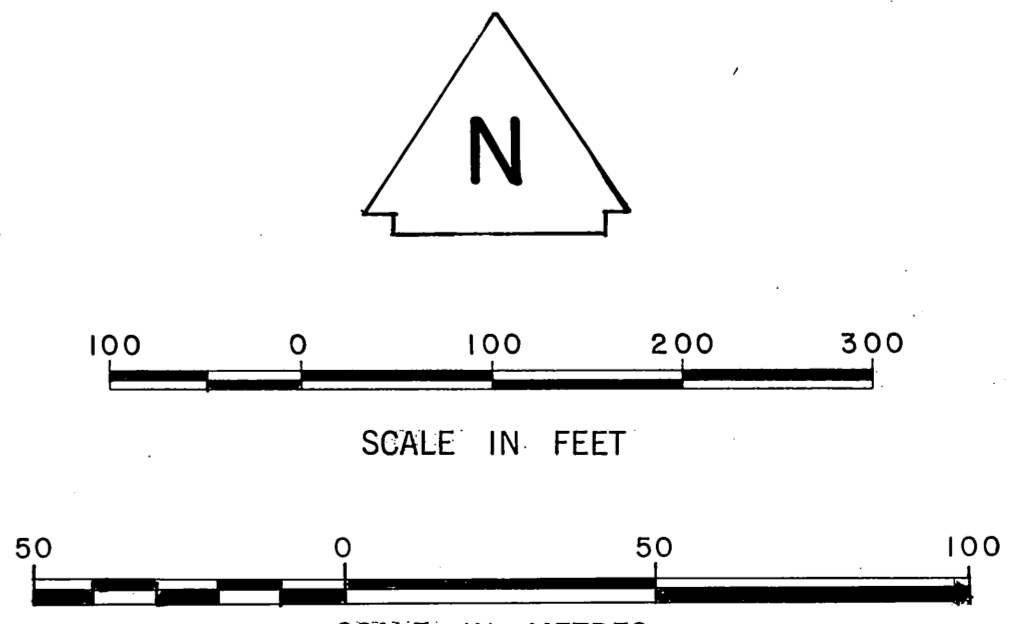
Found Monument marked
in corr. 1/2' below surface
see F.B. 2659-160
F.B. 2992-153

Found Calif. Div. of Beaches
and Parks cap Non-
monument marked L.S. 268
F.B. 2992-153

Curve Data:
Δ=14°09'35"
R=3000.00
T=372.60
L=741.40



INDEX MAP
NOT TO SCALE

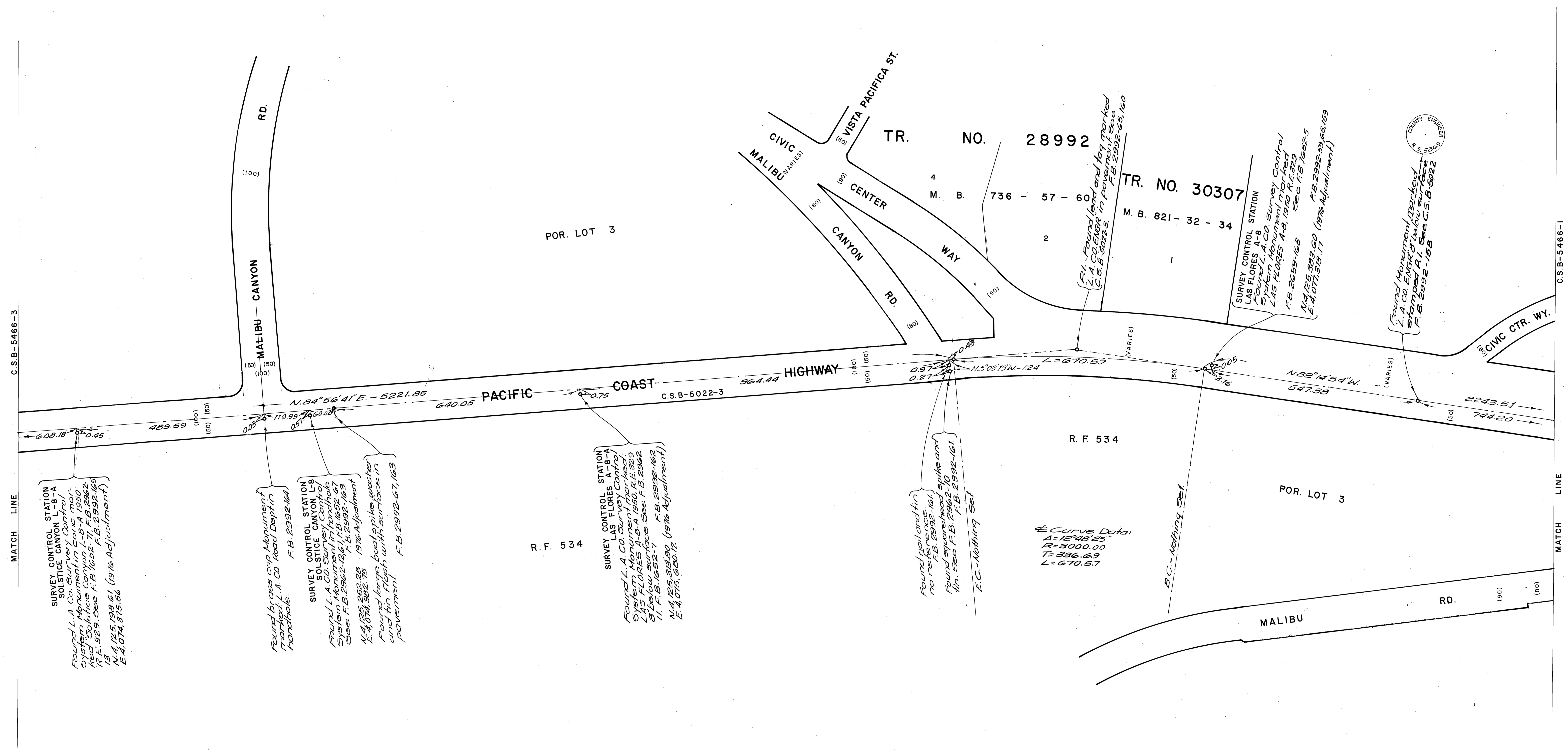


COUNTY OF LOS ANGELES DEPARTMENT OF COUNTY ENGINEER-FACILITIES STEPHEN J. KOONCE-COUNTY ENGINEER PREPARED BY SURVEY DIVISION RICHARD J. MITCHELL ASSISTANT DEPUTY COUNTY ENGINEER SURVEYED BY L.V. SMITH CHECKED BY R.S. HILLARIO DRAWN BY B. GOINS	ALIGNMENT MAP OF PACIFIC COAST HIGHWAY FROM STATE HWY. ENGR. STA. 786+40.70 TO STATE HWY. ENGR. STA. 924+62.28 BASIS OF BEARINGS CALIFORNIA COORDINATE SYSTEM, ZONE 7		COUNTY SURVEYOR'S MAP NO. B-5466 SHEET 1 OF 5 SHEETS FILED: <i>Richard J. Mitchell</i> DEPUTY SURVEYED MAY 1972 REFERENCE F.B. 2992	REVISION NO. BY DATE
	JOB NUMBER 0208-21		INDEX MAP NO. 114-057	

C 2 B - 2 4 6 6 - 5

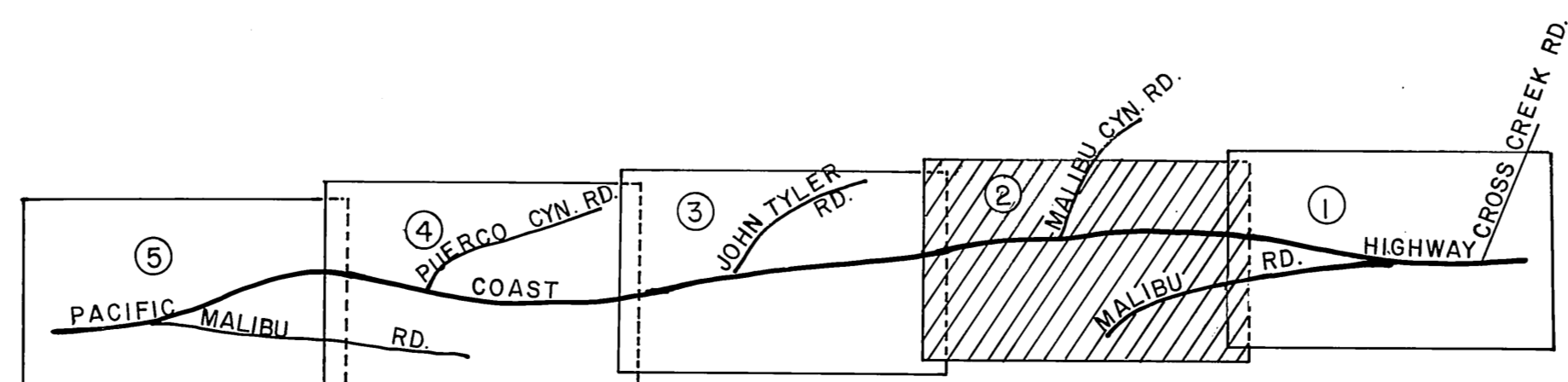
LAND OF MATTHEW KELLER

IN THE RANCHO TOPANGA MALIBU SEQUIT

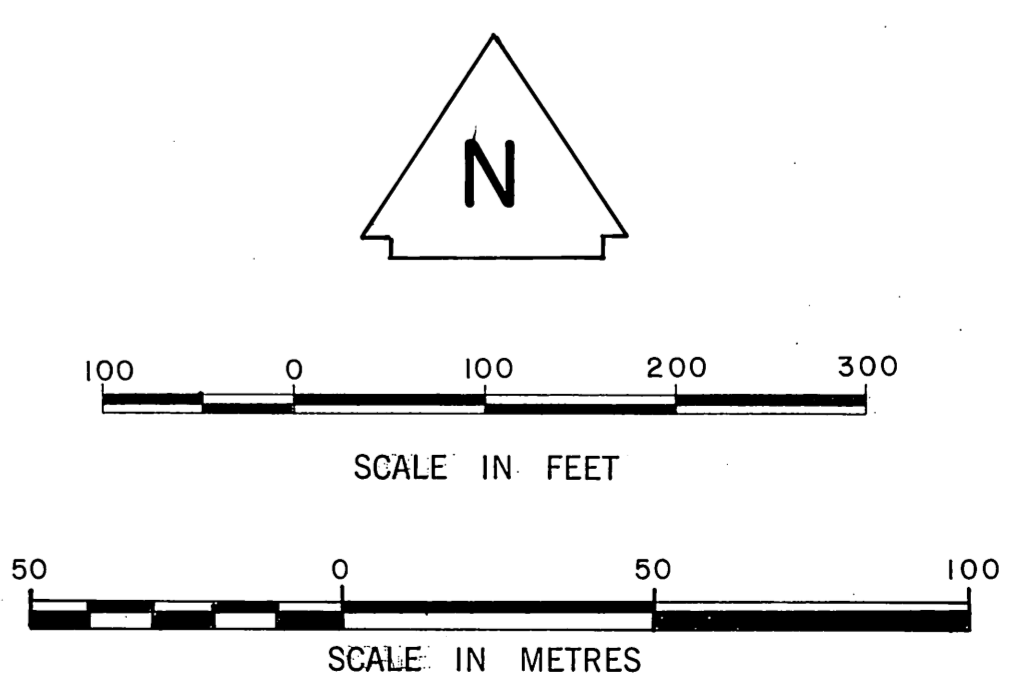


MATCH LINE

MATCH LINE



INDEX MAP NOT TO SCALE



COUNTY OF LOS ANGELES DEPARTMENT OF COUNTY ENGINEER-FACILITIES STEPHEN J. KOONCE-COUNTY ENGINEER PREPARED BY SURVEY DIVISION RICHARD J. MITCHELL ASSISTANT DEPUTY COUNTY ENGINEER SURVEYED BY L. V. SMITH CHECKED BY R. G. HILARIO DRAWN BY B. GOINS	ALIGNMENT MAP OF PACIFIC COAST HIGHWAY FROM STATE HWY. ENGR. STA. 786+40.70 TO STATE HWY. ENGR. STA. 924+62.28 BASIS OF BEARINGS CALIFORNIA COORDINATE SYSTEM, ZONE 7		COUNTY SURVEYOR'S MAP NO. B-5466 SHEET 2 OF 5 SHEETS FILED: January 19, 1982 SURVEYED MAY 1972 REFERENCE F.B. 2992	REVISION NO. BY DATE
	JOB NUMBER 0208.21		INDEX MAP NO. 114-057	

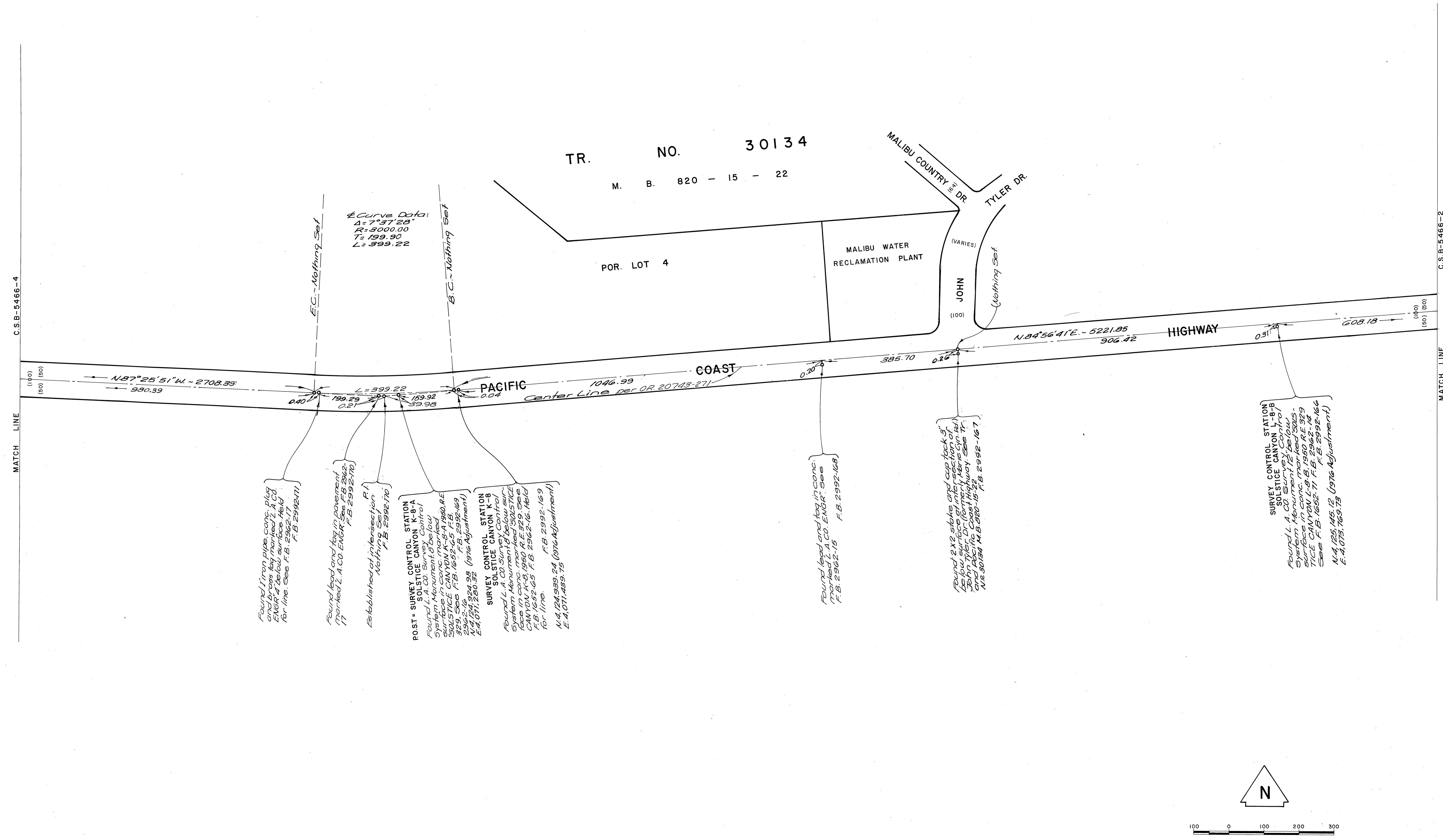
C.S.B.-5466-1

C 2 B - 2 4 6 6 - 5

LAND OF MATTHEW KELLER

IN THE RANCHO TOPANGA MALIBU SEQUIT

TR. NO. 30134
M. B. 820 - 15 - 22



Curve Data:
 $\Delta = 73^{\circ}27'28''$
 $R = 3000.00$
 $T = 199.90$
 $L = 399.22$

Found Iron pipe conc. plug and brass tag marked L.A. CO. Survey Control Station K-8-B below surface. Field for file. See F.B. 2992-17 F.B. 2992-111

Found lead and tag in pavement marked L.A. CO. ENGR. See F.B. 2962-17 F.B. 2992-176

Established at intersection P.I. Nothing Set F.B. 2992-170

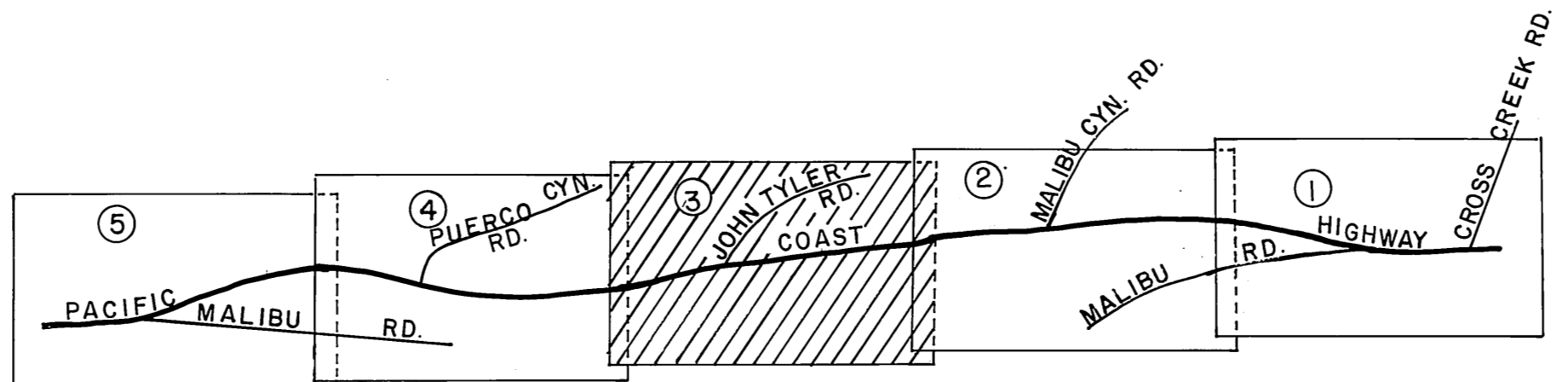
POST - SURVEY CONTROL STATION SOLSTICE CANYON K-8-A Found L.A. CO. Survey Control Station Monument B below surface in conc. marked SOLSTICE CANYON K-8-A 1980 R.E. 329. See F.B. 1652-65 F.B. 2992-169 F.B. 2992-169

SURVEY CONTROL STATION SOLSTICE CANYON K-8 Found L.A. CO. Survey Control Station Monument marked SOLSTICE face in conc. marked SOLSTICE CANYON K-8-A 1980 R.E. 329. See F.B. 1652-65 F.B. 2962-16. Field for file. F.B. 2992-169 F.B. 2992-169 M.A. 24, 24, 24, 24 (1976 Adjustment) E. 4, 071, 280.52 E. 4, 071, 455.75

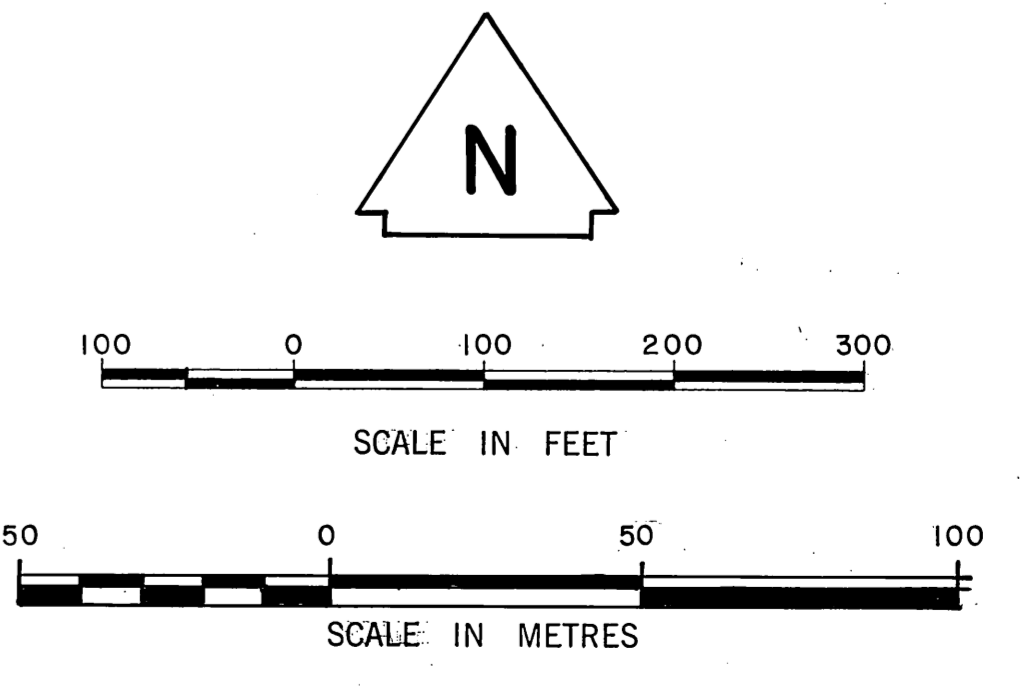
Found lead and tag in conc. marked L.A. CO. ENGR. See F.B. 2962-15 F.B. 2992-168

Found 2x2 stakes and cap lock 5' below surface (intersection of Tyler Dr and Malibu Rd) John Deere Coast Highway See F.B. 2992-167 M.A. 90, 90, 90, 90 F.B. 2992-167

SURVEY CONTROL STATION SOLSTICE CANYON L-8-B Found L.A. CO. Survey Control Station Monument marked SOLSTICE surface in conc. marked SOLSTICE CANYON L-8-B 1980 R.E. 329. See F.B. 1652-14 F.B. 2962-14 F.B. 2992-166 M.A. 125, 125, 125, 125 (1976 Adjustment) E. 4, 075, 769.75

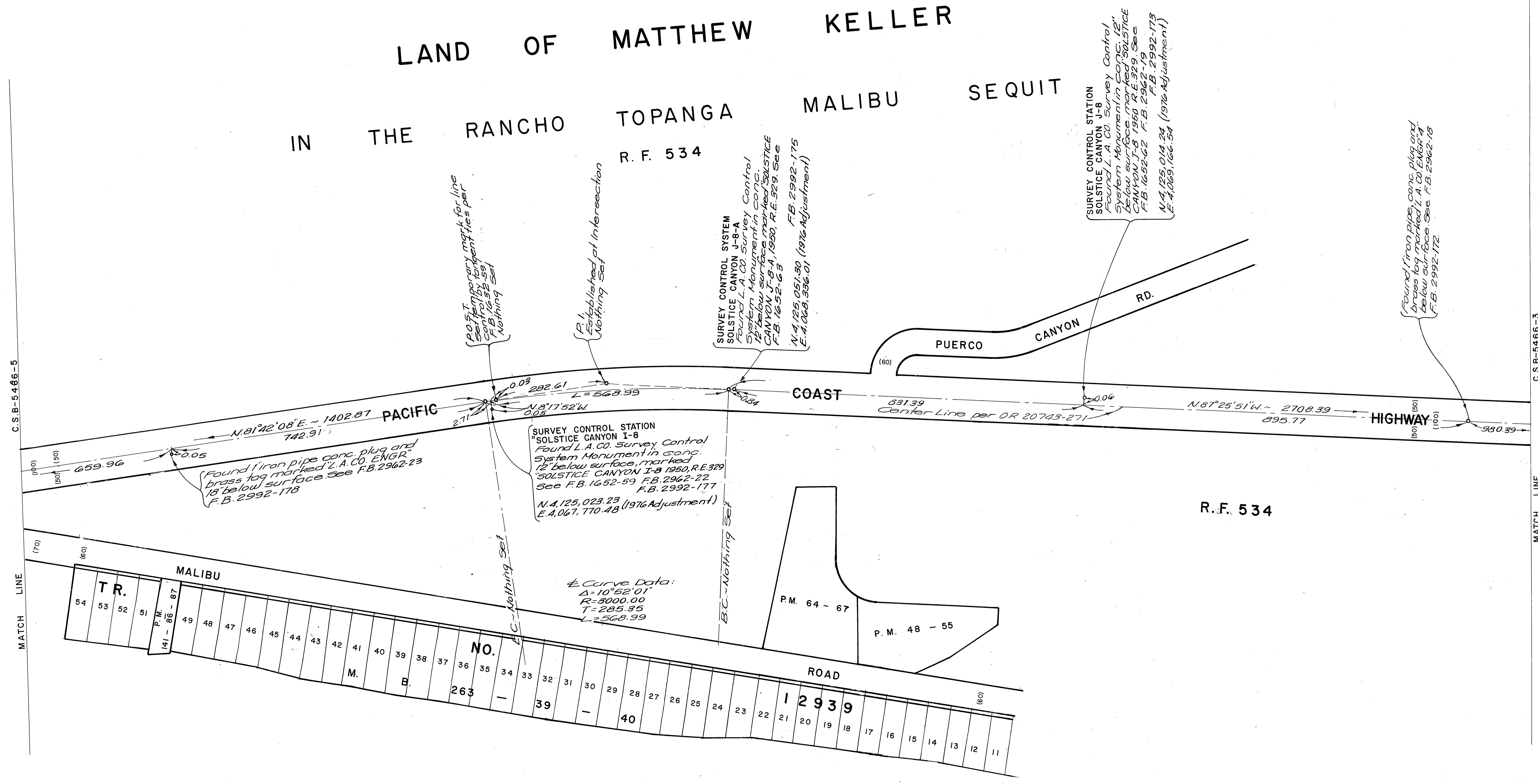


INDEX MAP
NOT TO SCALE



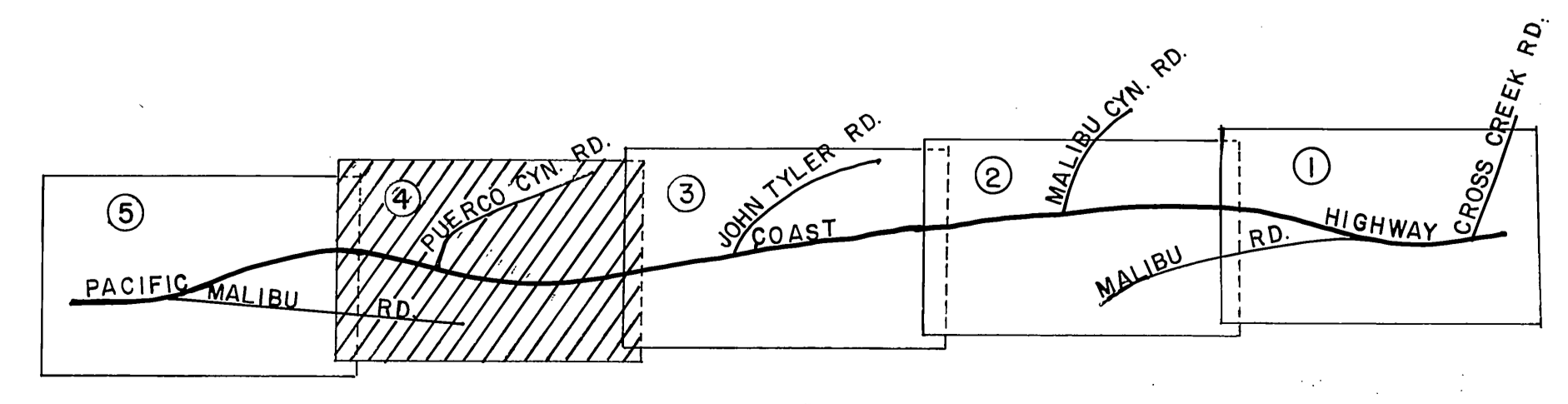
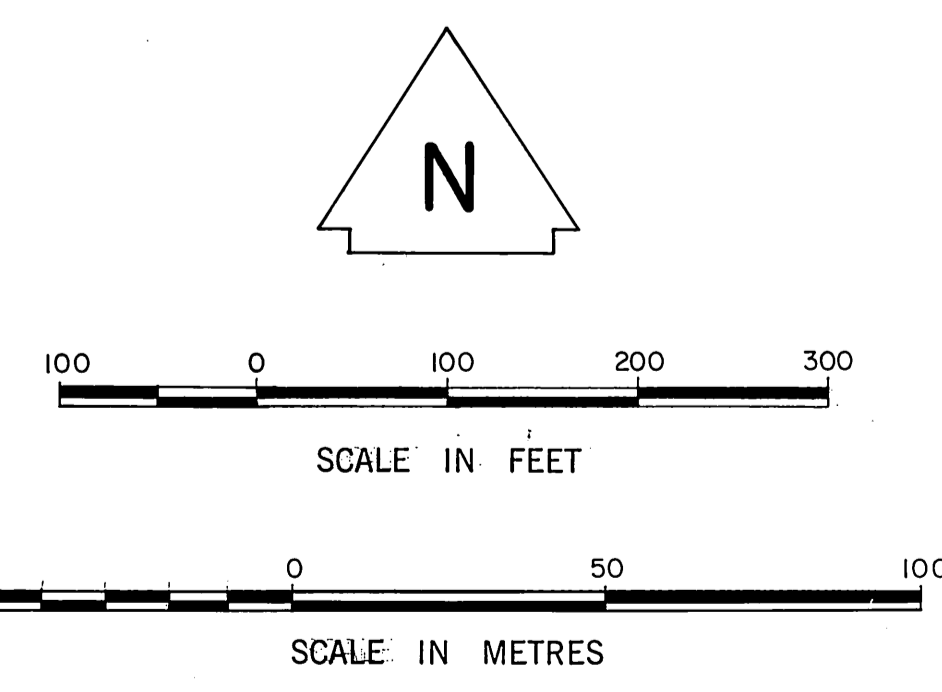
COUNTY OF LOS ANGELES DEPARTMENT OF COUNTY ENGINEER-FACILITIES STEPHEN J. KOONCE-COUNTY ENGINEER		ALIGNMENT MAP OF PACIFIC COAST HIGHWAY FROM STATE HWY. ENGR. STA. 786+40.70 TO STATE HWY. ENGR. STA. 924+62.28 BASIS OF BEARINGS CALIFORNIA COORDINATE SYSTEM, ZONE 7		COUNTY SURVEYOR'S MAP NO. B-5466 SHEET 3 OF 5 SHEETS FILED: January 17, 1972 DEPT.		REVISION NO. BY DATE	
PREPARED BY SURVEY DIVISION RICHARD J. MITCHELL ASSISTANT DEPUTY COUNTY ENGINEER SURVEYED BY L.V. SMITH		SURVEYED MAY 1972 REFERENCE F.B. 2992		JOB NUMBER 0208.21		INDEX MAP NO. 114-057	
CHECKED BY R.G. HILLARIO		DRAWN BY B. GOINS					

LAND OF MATTHEW KELLER
IN THE RANCHO TOPANGA MALIBU SEQUIT
R.F. 534



C.S.B-5466-5
MATCH LINE

C.S.B-5466-3
MATCH LINE



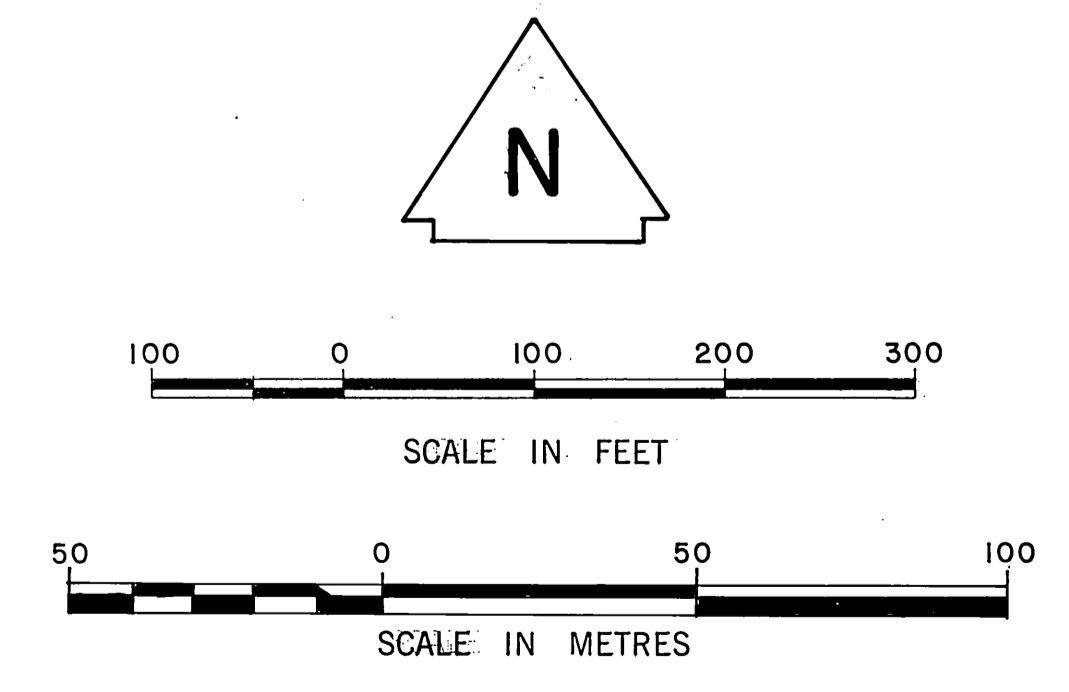
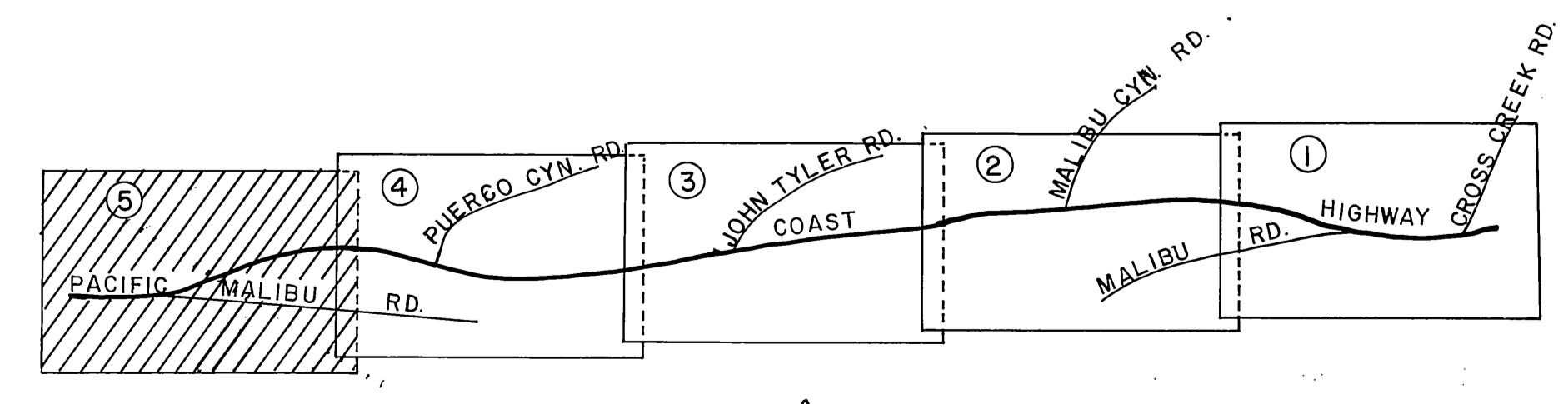
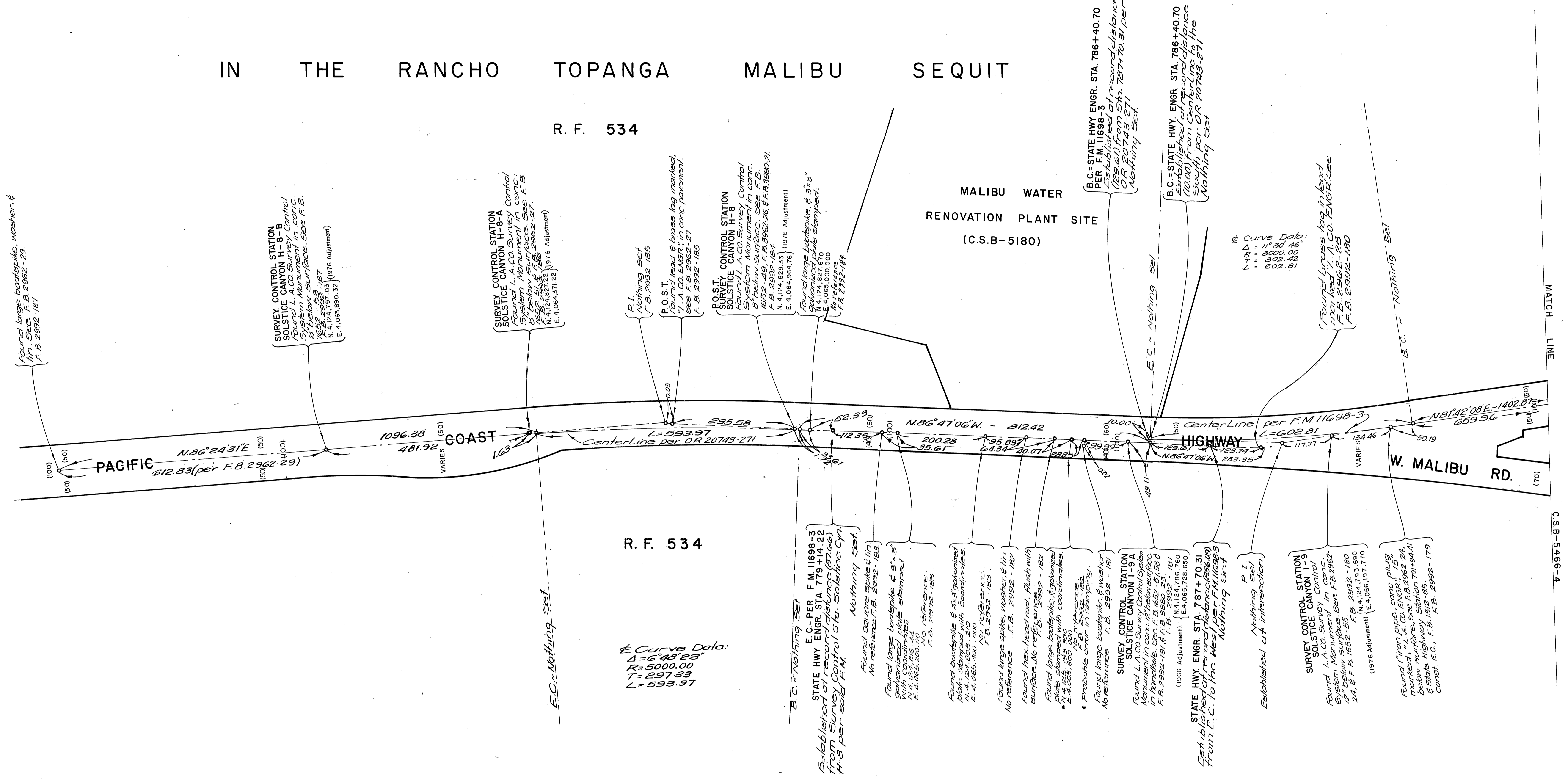
INDEX MAP
NOT TO SCALE

COUNTY OF LOS ANGELES DEPARTMENT OF COUNTY ENGINEER-FACILITIES STEPHEN J. KOONCE-COUNTY ENGINEER PREPARED BY SURVEY DIVISION RICHARD J. MITCHELL ASSISTANT DEPUTY COUNTY ENGINEER SURVEYED BY L.V. SMITH CHECKED BY R.G. HILARIO DRAWN BY B. GOINS	ALIGNMENT MAP OF PACIFIC COAST HIGHWAY FROM STATE HWY. ENGR. STA. 786+40.70 TO STATE HWY. ENGR. STA. 924+62.28 <small>BASIS OF BEARINGS</small> CALIFORNIA COORDINATE SYSTEM, ZONE 7		COUNTY SURVEYOR'S MAP NO. B-5466 SHEET 4 OF 5 SHEETS FILED: January 19, 1982 DEPUTY SURVEYED MAY 1972 REFERENCE F.B. 2982	REVISION NO. BY DATE
	JOB NUMBER 0208.21		INDEX MAP NO. 114-057	

LAND OF MATTHEW KELLER

IN THE RANCHO TOPANGA MALIBU SEQUIT

R. F. 534



COUNTY OF LOS ANGELES DEPARTMENT OF COUNTY ENGINEER-FACILITIES STEPHEN J. KOONCE-COUNTY ENGINEER PREPARED BY SURVEY DIVISION RICHARD J. MITCHELL ASSISTANT DEPUTY COUNTY ENGINEER SURVEYED BY L. V. SMITH CHECKED BY R. G. HILARIO DRAWN BY B. GOINS	ALIGNMENT MAP OF PACIFIC COAST HIGHWAY		COUNTY SURVEYOR'S MAP NO. B-5466
	FROM STATE HWY. ENGR. STA. 786+40.70		SHEET 5 OF 5 SHEETS FILED: <i>May 19, 1972</i> <i>R. J. Mitchell</i>
	TO STATE HWY. ENGR. STA. 924+62.28		SURVEYED MAY 1972 REFERENCE: F.B. 2992
	CALIFORNIA COORDINATE SYSTEM, ZONE 7		JOB NUMBER 0208.21 INDEX MAP NO. 114-057

MATCH LINE C.S.B-5466-4