

NOTE:
SEE TECHNICAL NOTES ON SHEET 3.

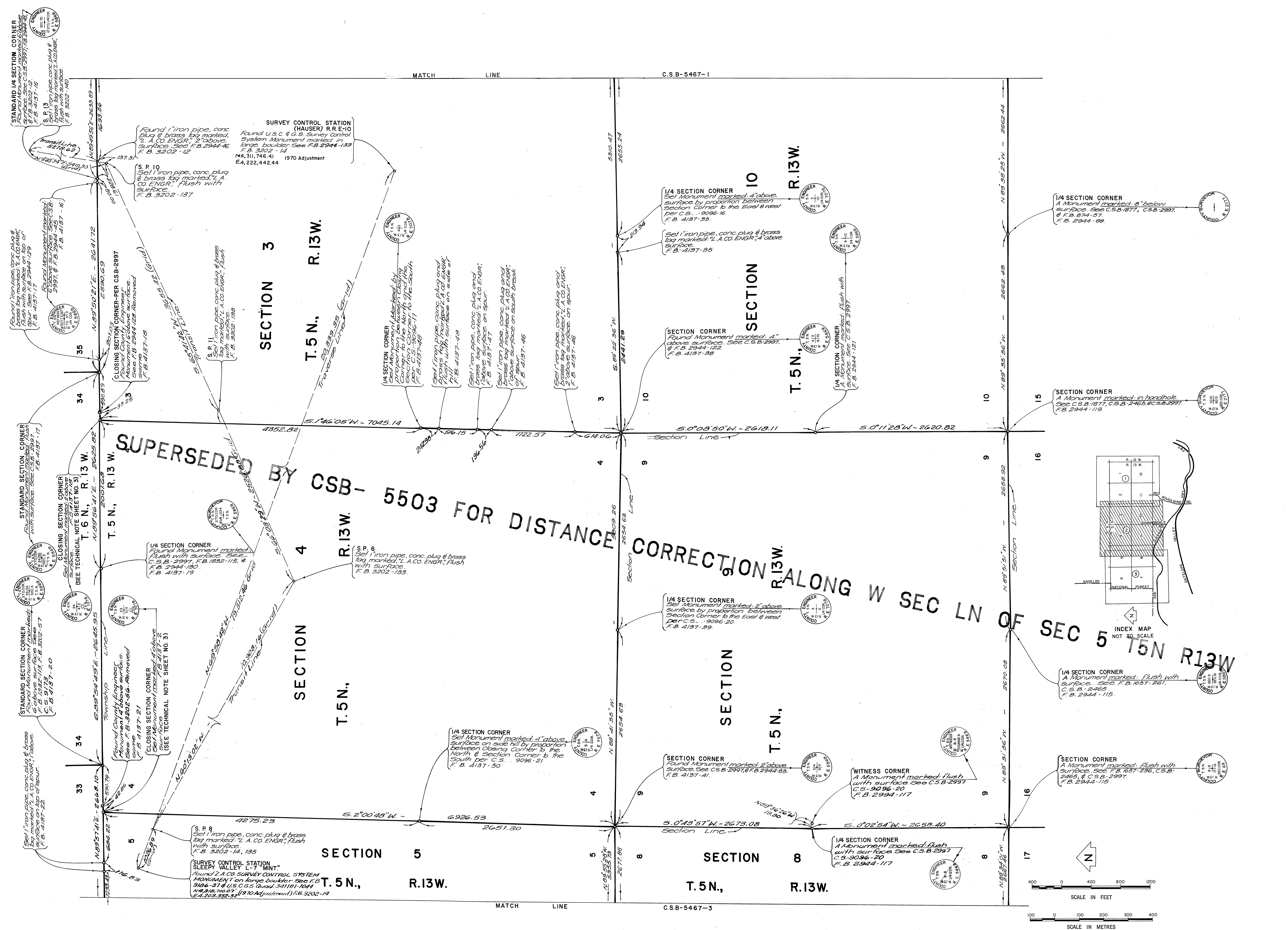
NOTE:
THIS MAP WAS FILED FOR THE PURPOSE OF
ESTABLISHING THE SECTION LINES. ALL
OTHER CADASTRAL DATA HAS BEEN OMITTED.

COUNTY OF LOS ANGELES DEPARTMENT OF COUNTY ENGINEER-FACILITIES STEPHEN J. KOONCH COUNTY ENGINEER PREPARED BY SURVEY DIVISION RICHARD J. MITCHELL ASSISTANT DEPUTY COUNTY ENGINEER SURVEYED BY - HUBBARD CHECKED BY - R. HILARIO DRAWN BY - B. GOINS	MAP OF SECTIONS 1-6, 7-12 T. 5 N., R. 13 W. S. B. M.		COUNTY SURVEYOR'S MAP NO. B-5467	
	BASIS OF BEARINGS CALIFORNIA COORDINATE SYSTEM, ZONE 7		SHEET 1 OF 3 SHEETS FILED: <i>February 12, 1974</i> <i>R. J. Mitchell</i> SURVEYED JUNE 1974	
	REFERENCE F.B. 2944, F.B. 3199, F.B. 3202, F.B. 4137, F.B. 4143, F.B. 4343		JOB NUMBER 0302.01	INDEX MAP NO. W. S. 64
	REVISION		NO. BY DATE	REVISION

MATCH

LINE

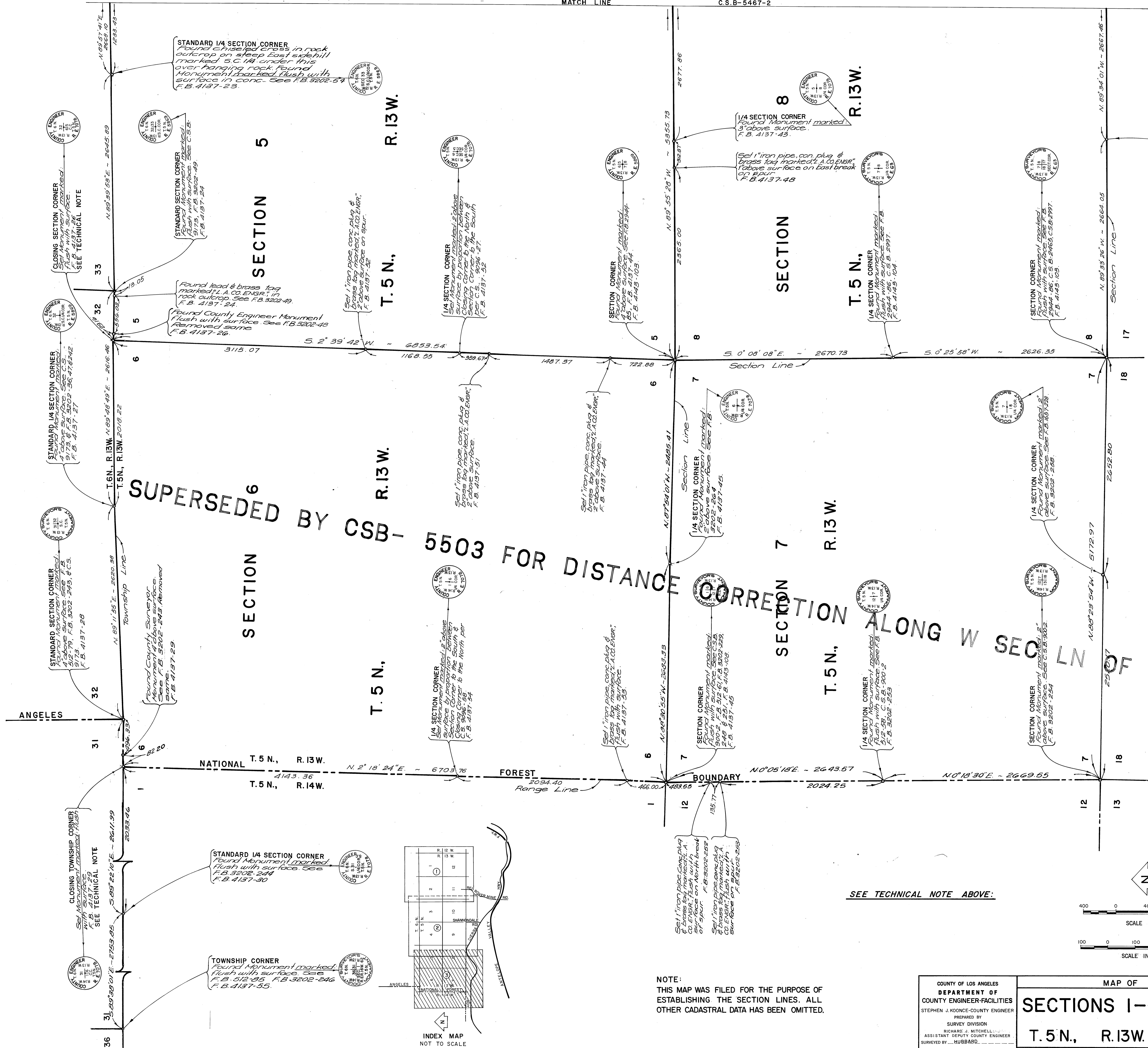
C.S.B-5467-1



NOTE:
SEE TECHNICAL NOTES ON SHEET 3.

NOTE:
THIS MAP WAS FILED FOR THE PURPOSE OF
ESTABLISHING THE SECTION LINES. ALL
OTHER CADASTRAL DATA HAS BEEN OMITTED.

COUNTY OF LOS ANGELES DEPARTMENT OF COUNTY ENGINEER-FACILITIES STEPHEN J. KOONCE-COUNTY ENGINEER PREPARED BY SURVEY DIVISION RICHARD J. MITCHELL ASSISTANT DEPUTY COUNTY ENGINEER SURVEYED BY HUBBARD CHECKED BY R. HILARIO DRAWN BY B. GOINS	MAP OF SECTIONS 1-6, 7-12 T. 5 N., R. 13 W. S.B.M.		COUNTY SURVEYOR'S MAP NO. B-5467 SHEET 2 OF 3 SHEETS FILED: February 12, 1984 R. J. Koince, County Engineer	REVISION NO. BY DATE
	BASIS OF BEARINGS CALIFORNIA COORDINATE SYSTEM, ZONE 7		SURVEYED JUNE 1974 REFERENCE FB 2944, FB 3198, FB 3202, FB 4137, FB 4143, F.B. 4343 JOB NUMBER 0302.01 INDEX MAP NO. W.S. 64	



SUPERSEDED BY CSB-5503 FOR DISTANCE CORRECTION ALONG W SECTION OF SEC 5 T5N R13W

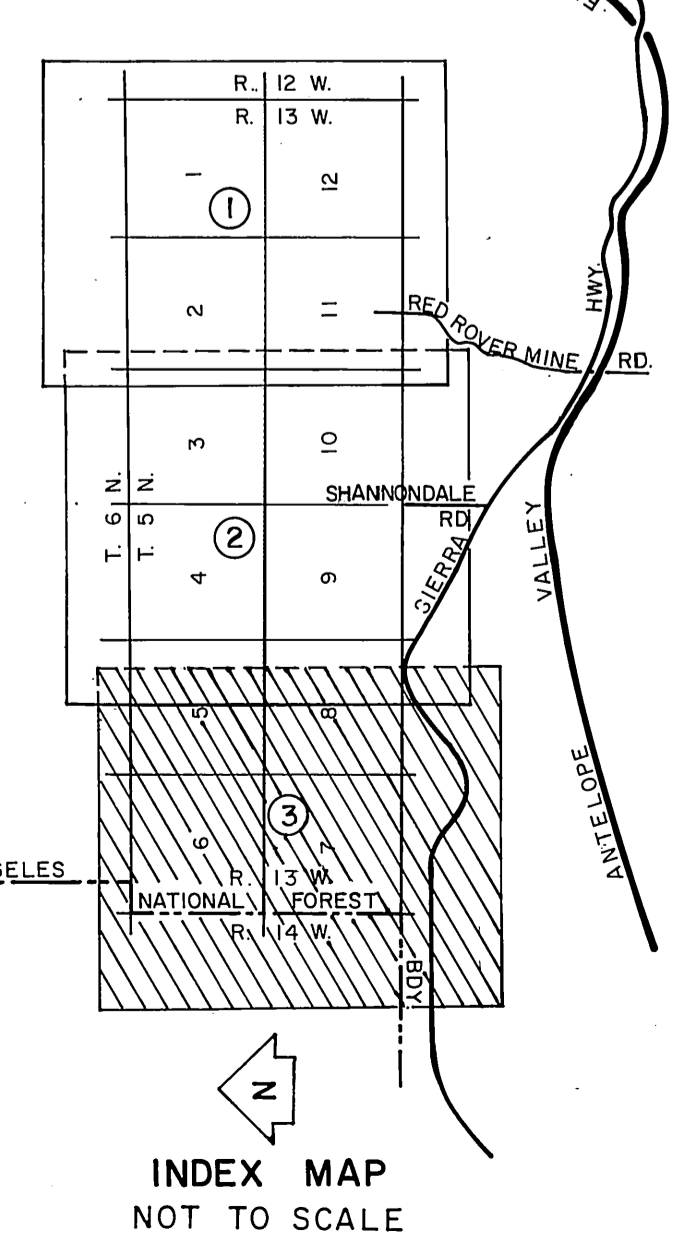
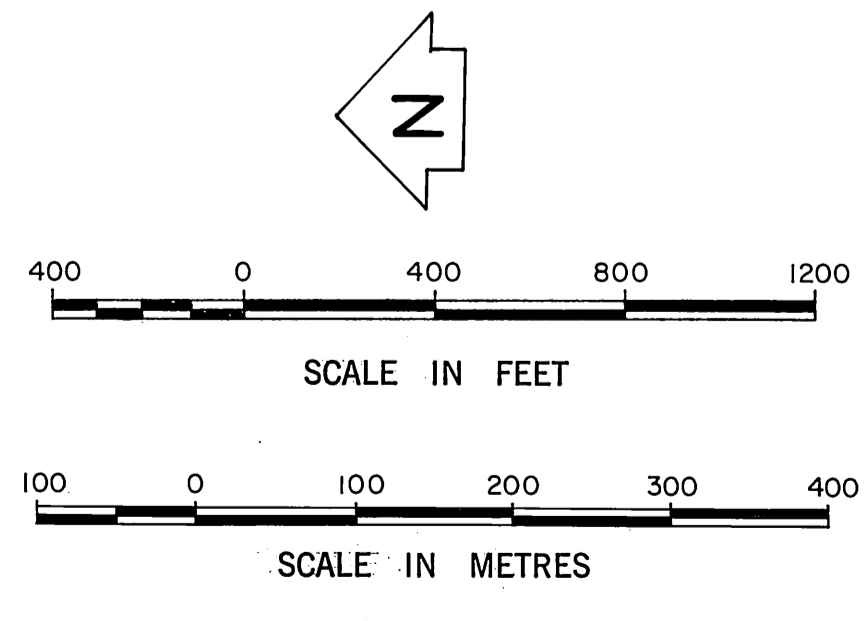
TECHNICAL NOTES

IN THE ESTABLISHMENT OF THE NORTH LINE OF TOWNSHIP 5 NORTH (WHICH IS THE FIRST STANDARD PARALLEL NORTH OF THE SAN BERNARDINO BASE) WE RELY ON THE FOLLOWING.

- Norway in 1879 found (or set) the Standard Corner marking the intersection of the East line of R.13W. with the first Standard Parallel and then ran the Standard Parallel West 480.00 chains (setting section corners and 1/4 corners at 40 chain intervals) and set the Standard Corner marking the West line of the range. He then set the Closing Corners common to Sections 1 and 2, 3 and 4, 5 and 6 and 7 and 8 in Township 5 North noting the fallings to his previously set Standard Corners. See Township Plat Township 5 North, Range 13 West and C.S. 9173 pages 19-22 and 69-71. See also C.S. 9094-12.
- Pearson, in 1902, found Norway's monument marking the Standard Corner at the intersection of the East line of Range 13 West with the first Standard Parallel as described above. Running west, Pearson found none of Norway's corners (but left his own at 40.00 chain intervals) until he arrived at the West Standard Corner for Township 6 North, Range 13 West where he found Norway's corner at 481.85 chains. He did NOT return and proportion the intermediate corners but rather left the excess (over Norway) of 1.85 chains in the West 1/2 of the South line of Section 31. See Township Plats of Township 5 North, Range 13 West and Township 6 North, Range 13 West and see C.S. 9173 pages 23-33.
- In 1966 the County Engineer filed County Surveyor Map No. B-2997 showing various permutations of Pearsons Standard Corners and showing the reestablishment of the Closing Corners of Sections 1 to 5 in Township 5 North, Range 13 West by the method of proportionate measurement against Norway's fallings and Pearsons establishment of the Standard Corners. See County Surveyor Map No. B-2997 and FB. 2944-48, 59, 114, 128, 161.
- In January 1972 the manner of reestablishment of the Closing Corners shown on County Surveyor Map No. B-2997 was challenged. A letter in response to the challenge was received from Mr. J. R. Penny, State Director, Bureau of Land Management. It was dated February 9, 1972 and concluded "... we would proportion the missing Closing Corners using Norway's record between the found Township Corners."

THIS MAP THEN SUPERSEDES THOSE PORTIONS OF COUNTY SURVEYORS MAP NO. B-2997 PERTAINING TO THE ESTABLISHMENT OF THE CLOSING CORNERS. IT SHOWS THE PLACEMENT OF THE CORNERS ON THE LINE RUN BY PEARSON BUT AT DISTANCES DETERMINED USING NORWAYS FALLINGS AND NORWAYS 480.00 CHAINS AS A BASE FOR PROPORTIONATE MEASUREMENT ALONG THE STANDARD PARRALLEL.

SEE TECHNICAL NOTE ABOVE:



NOTE:
THIS MAP WAS FILED FOR THE PURPOSE OF ESTABLISHING THE SECTION LINES. ALL OTHER CADASTRAL DATA HAS BEEN OMITTED.

COUNTY OF LOS ANGELES DEPARTMENT OF COUNTY ENGINEER-FACILITIES STEPHEN J. KOONCE-COUNTY ENGINEER PREPARED BY SURVEY DIVISION RICHARD J. MITCHELL ASSISTANT DEPUTY COUNTY ENGINEER SURVEYED BY HUBBARD CHECKED BY R. HILARIO DRAWN BY B. GOINS	MAP OF SECTIONS 1-6, 7-12 T. 5 N., R. 13 W. S. B. M.		COUNTY SURVEYOR'S MAP NO. B-5467 SHEET 3 OF 3 SHEETS FILED: February 15, 1974 R. J. Mitchell	REVISION NO. BY DATE	
	BASIS OF BEARINGS CALIFORNIA COORDINATE SYSTEM, ZONE 7		SURVEYED JUNE 1974		
			REFERENCE FB2944, FB3995, FB 3202, FB 437, FB 443, F.B. 4343		
			JOB NUMBER 0302.01	INDEX MAP NO. W. S. 64	