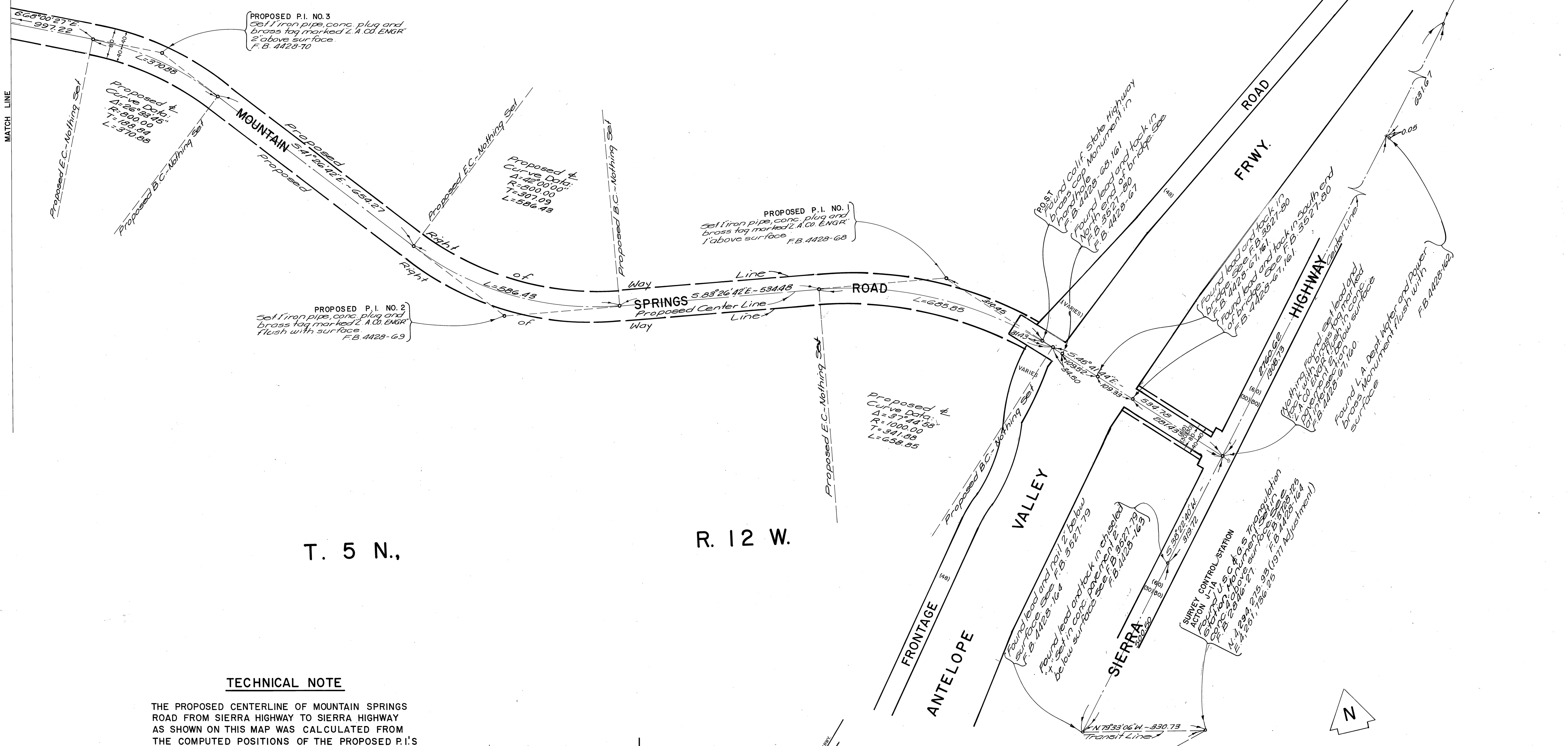


6. S.B. - 5469-2

SECTION

22



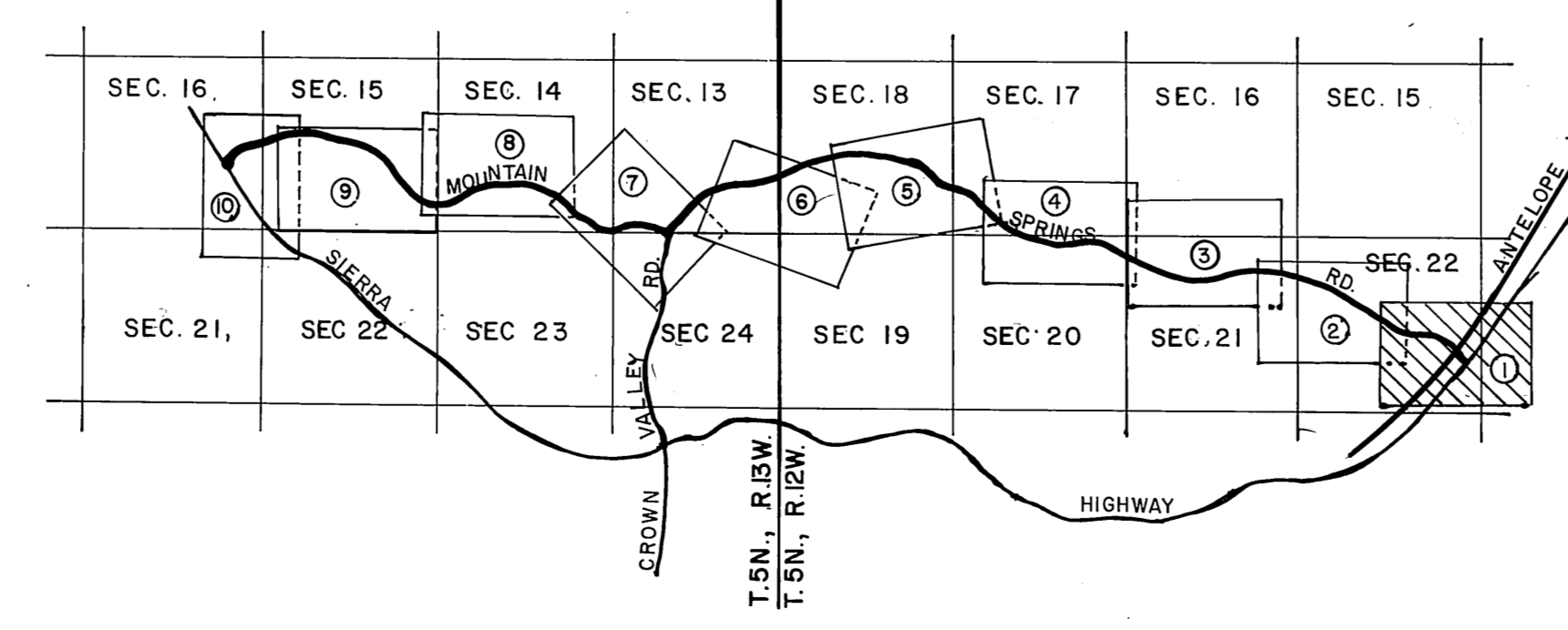
T. 5 N.,

R. 12 W.

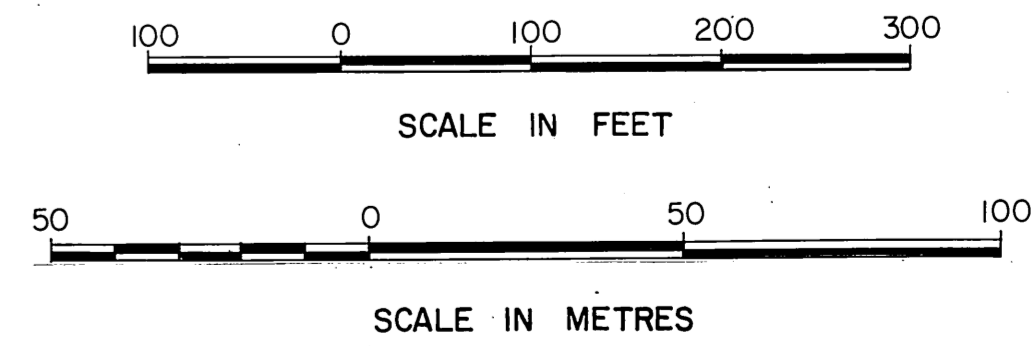
TECHNICAL NOTE

THE PROPOSED CENTERLINE OF MOUNTAIN SPRINGS ROAD FROM SIERRA HIGHWAY TO SIERRA HIGHWAY AS SHOWN ON THIS MAP WAS CALCULATED FROM THE COMPUTED POSITIONS OF THE PROPOSED P.I.'S AS SET IN THE FIELD BY CONTROL TIES PER SURVEY FILE MAP NO. G-174-7.

SECTION LINE DATA WERE COMPILED FROM RECORD. SEE C.S.B-1877 AND C.S.B-2762.

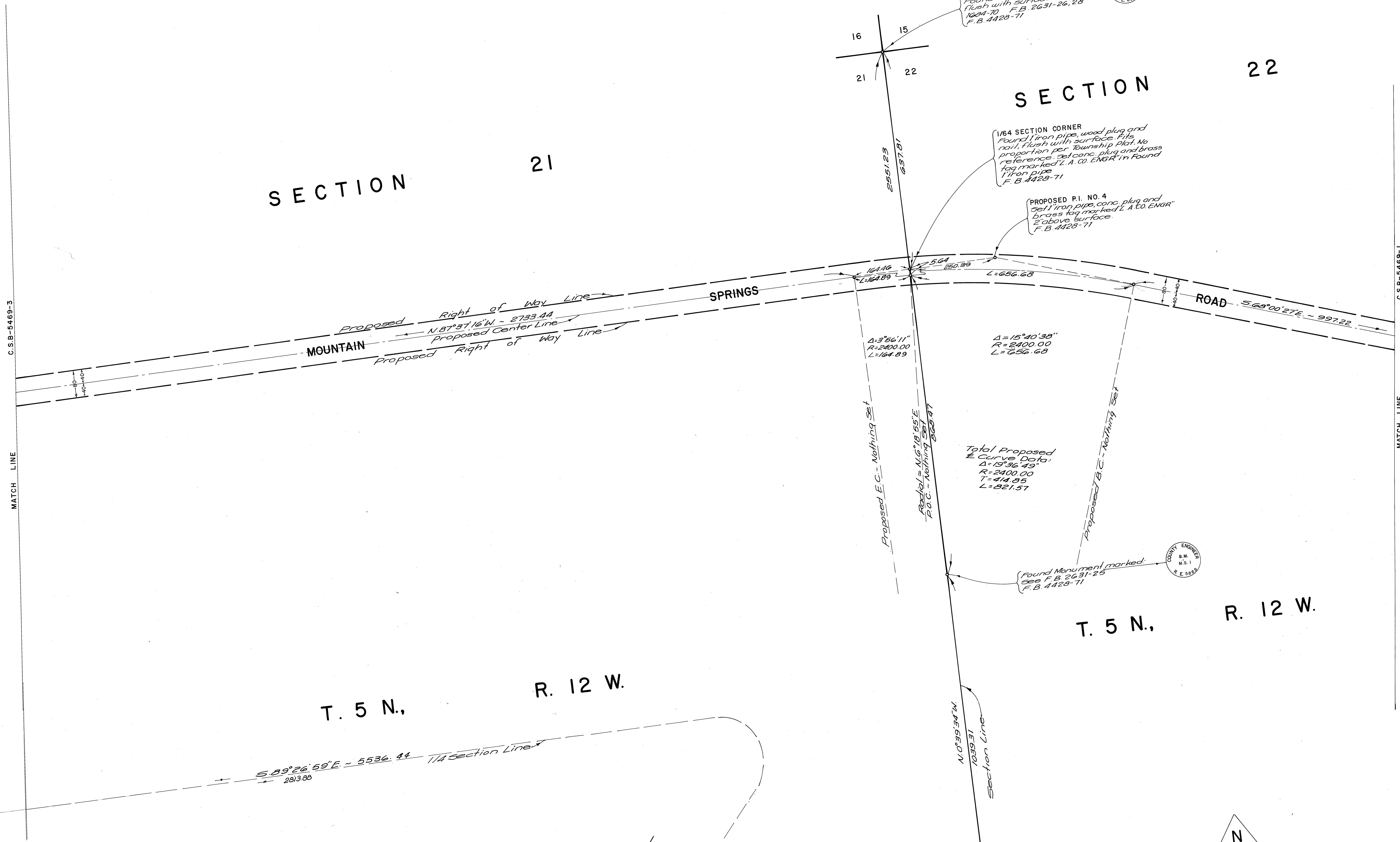


INDEX MAP NOT TO SCALE



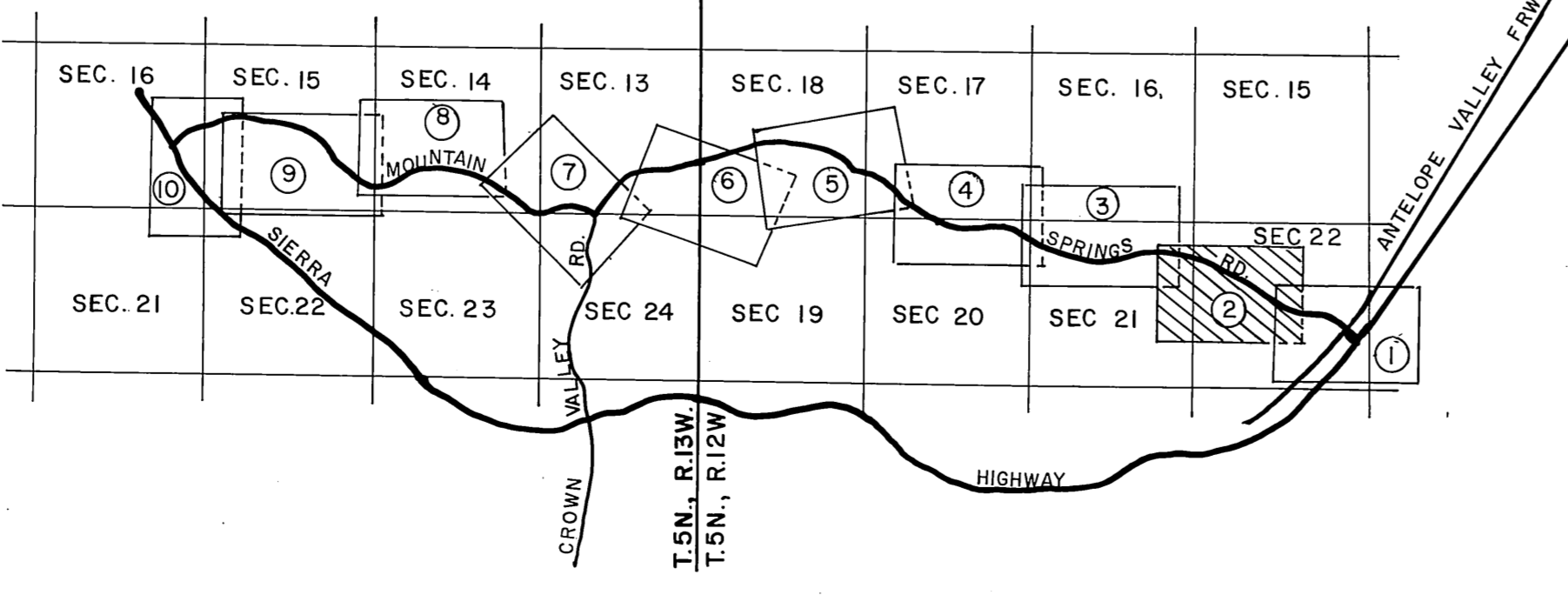
SURVEY CONTROL STATION ACTION J-1C
Found U.S.C. & G.S. bench mark. Set flush with surface in conc. per F.B. 2946-29. See F.B. 4428-164 N. 4, 294, 134.02 (1977 Adjustment) E. 4, 291, 300.63

COUNTY OF LOS ANGELES DEPARTMENT OF COUNTY ENGINEER-FACILITIES STEPHEN J. KOONCE-COUNTY ENGINEER PREPARED BY SURVEY-LAND DEVELOPMENT DIVISION TIBBON PHELPS JR. ASSISTANT DEPUTY COUNTY ENGINEER SURVEYED BY J. B. COVEY CHECKED BY R. G. HILARIO DRAWN BY B. GOINS	ALIGNMENT MAP OF MOUNTAIN SPRINGS ROAD FROM SIERRA HIGHWAY TO SIERRA HIGHWAY BASIS OF BEARINGS CALIFORNIA COORDINATE SYSTEM, ZONE 7		COUNTY SURVEYOR'S MAP NO. B5469 SHEET 1 OF 10 SHEETS FILED: <i>Walt</i> <i>24</i> <i>19</i> <i>21</i> DEPUTY SURVEYED APRIL 1983 REFERENCE F. B. 4428
	JOB NUMBER 0220-11		INDEX MAP NO. 294-217, 294-237
	DRAWN BY B. GOINS		CHECKED BY R. G. HILARIO
	SURVEYED BY J. B. COVEY		PREPARED BY TIBBON PHELPS JR.

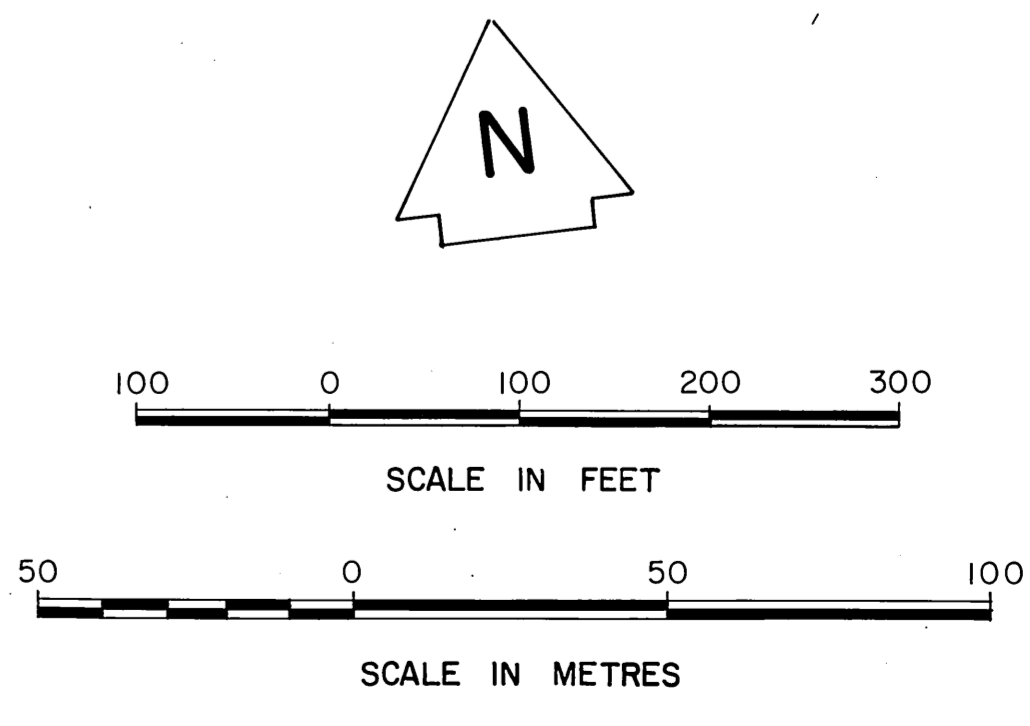


T. 5 N. R. 12 W.

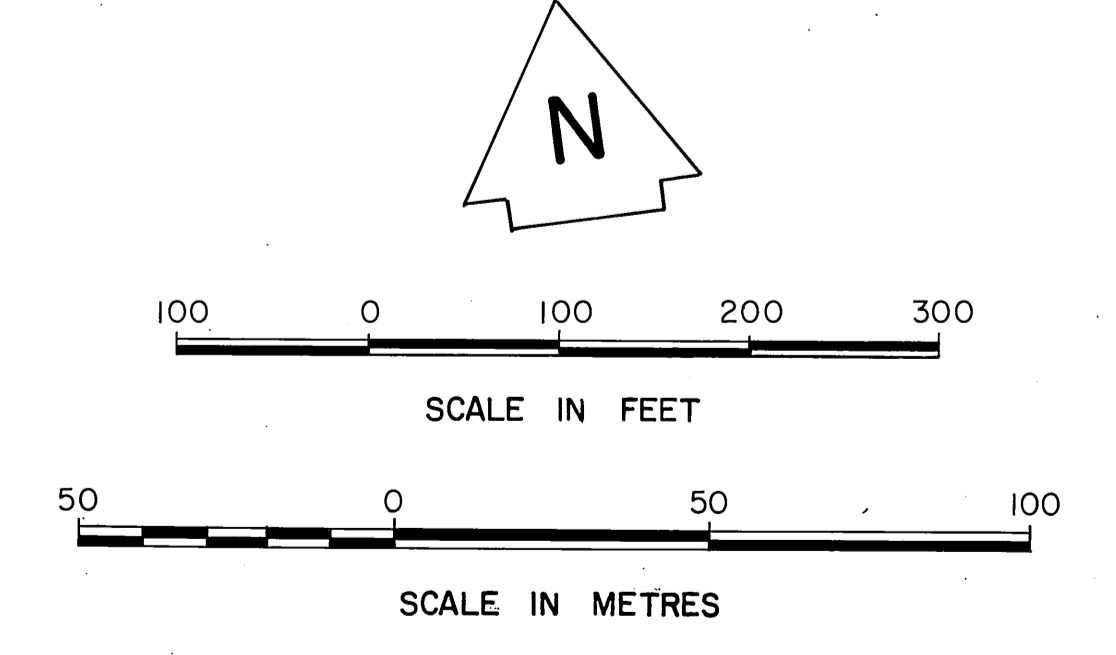
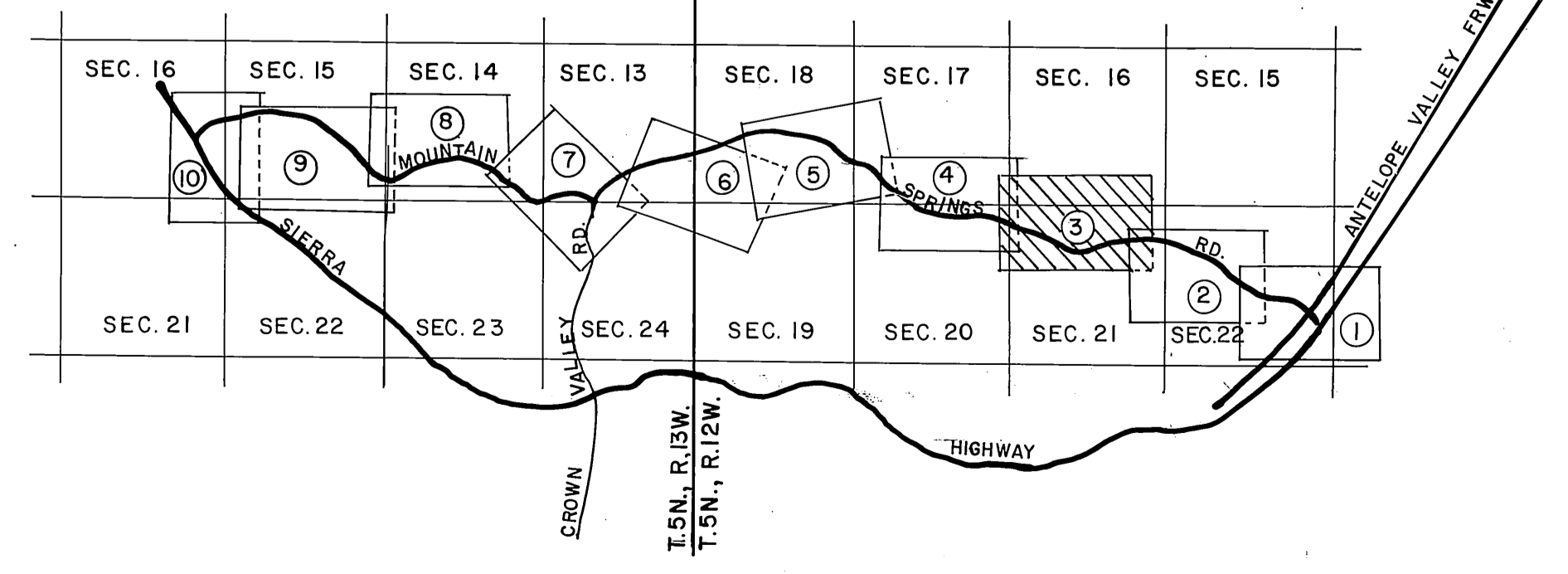
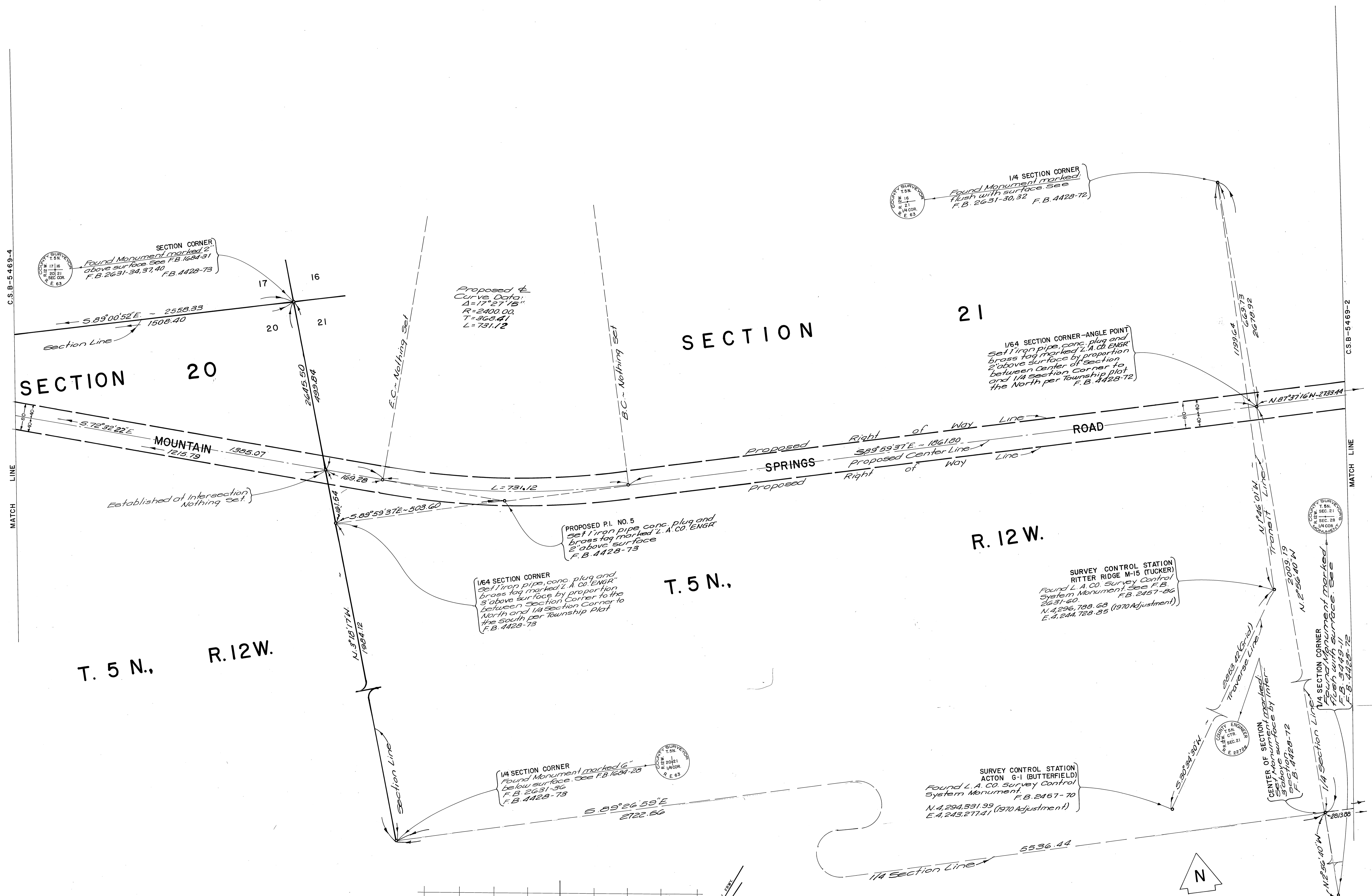
T. 5 N. R. 12 W.



INDEX MAP NOT TO SCALE



COUNTY OF LOS ANGELES DEPARTMENT OF COUNTY ENGINEER-FACILITIES STEPHEN J. KOONCE-COUNTY ENGINEER PREPARED BY SURVEY-LAND DEVELOPMENT DIVISION GIBSON, PHELPS JR. ASSISTANT DEPUTY COUNTY ENGINEER SURVEYED BY ... L. R. COVEY CHECKED BY ... R. G. HILARIO DRAWN BY ... B. GOINS	ALIGNMENT MAP OF MOUNTAIN SPRINGS ROAD FROM SIERRA HIGHWAY TO SIERRA HIGHWAY	COUNTY SURVEYOR'S MAP NO. B-5469 SHEET 2 OF 10 SHEETS FILED: <i>Jan 26</i> , 1983 DEPUTY SURVEYED APRIL 1983 REFERENCE F. B. 4428
	BASIS OF BEARINGS CALIFORNIA COORDINATE SYSTEM, ZONE 7	
	JOB NUMBER 0220.11 294-217, 294-237	
	INDEX MAP NO.	



COUNTY OF LOS ANGELES DEPARTMENT OF COUNTY ENGINEER-FACILITIES STEPHEN J. KOONCE-COUNTY ENGINEER PREPARED BY SURVEY-LAND DEVELOPMENT DIVISION GIBSON PHELPS JR. ASSISTANT DEPUTY COUNTY ENGINEER SURVEYED BY J. R. COVEY CHECKED BY R. G. HILARIO DRAWN BY B. GOINS	ALIGNMENT MAP OF MOUNTAIN SPRINGS ROAD FROM SIERRA HIGHWAY TO SIERRA HIGHWAY BASIS OF BEARINGS CALIFORNIA COORDINATE SYSTEM, ZONE 7		COUNTY SURVEYOR'S MAP NO. B-5469 SHEET 3 OF 10 SHEETS FILED: Nov 26, 1981 SURVEYED APRIL 1983 REFERENCE F. B. 4428 JOB NUMBER 0220.11
	COUNTY SURVEYOR'S MAP NO. B-5469 SHEET 3 OF 10 SHEETS FILED: Nov 26, 1981 SURVEYED APRIL 1983 REFERENCE F. B. 4428 JOB NUMBER 0220.11		COUNTY SURVEYOR'S MAP NO. B-5469 SHEET 3 OF 10 SHEETS FILED: Nov 26, 1981 SURVEYED APRIL 1983 REFERENCE F. B. 4428 JOB NUMBER 0220.11

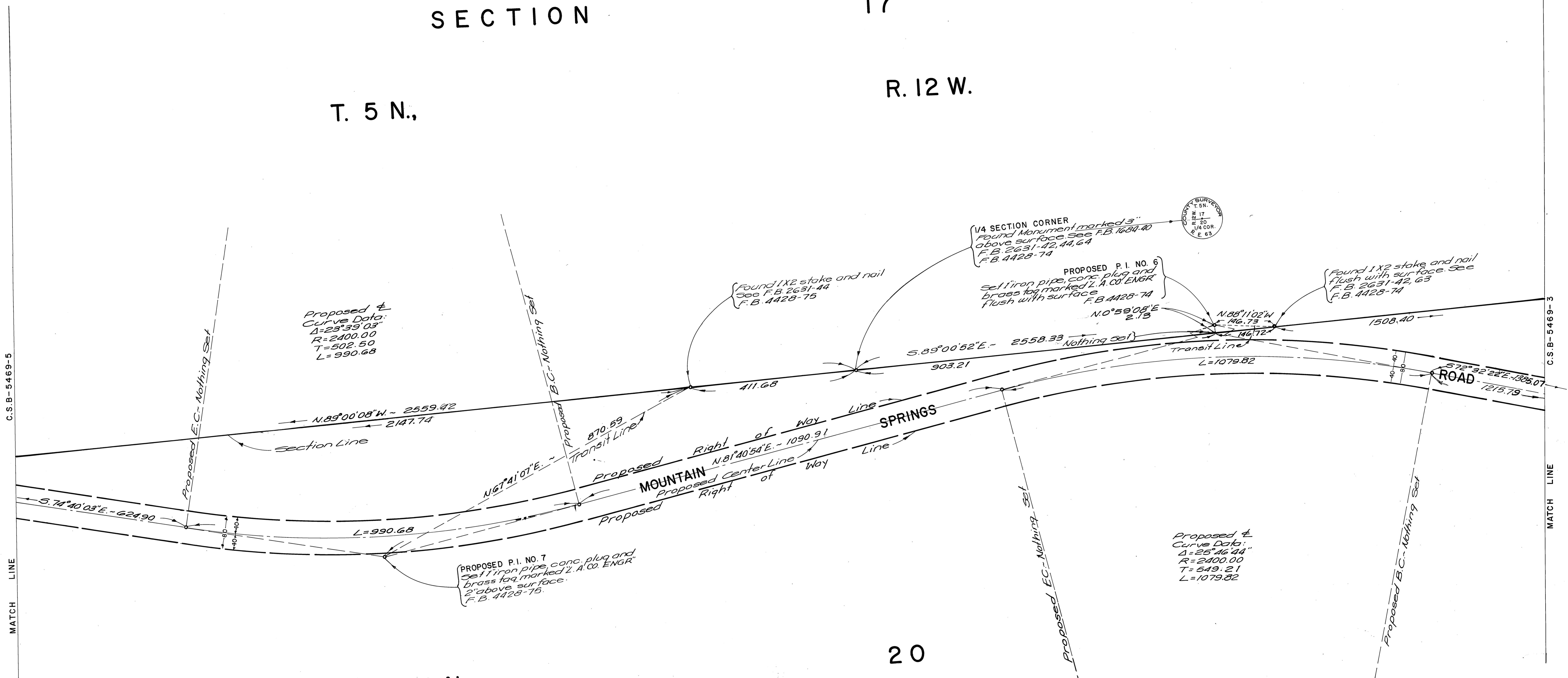
4-0045-B.2.C

SECTION

17

T. 5 N.,

R. 12 W.

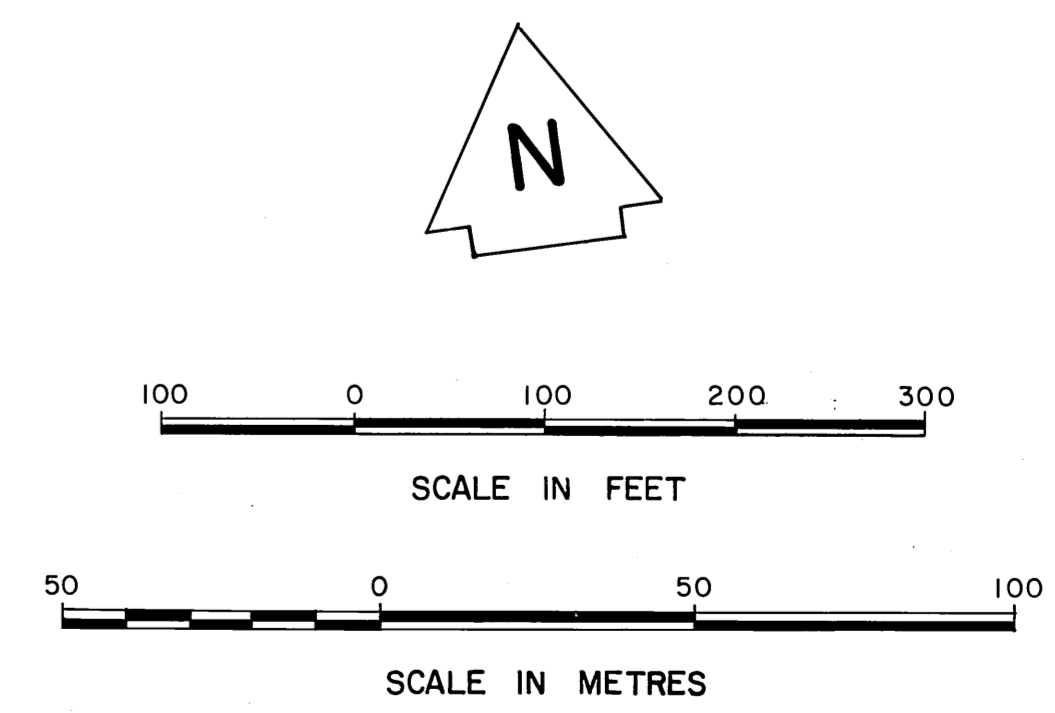
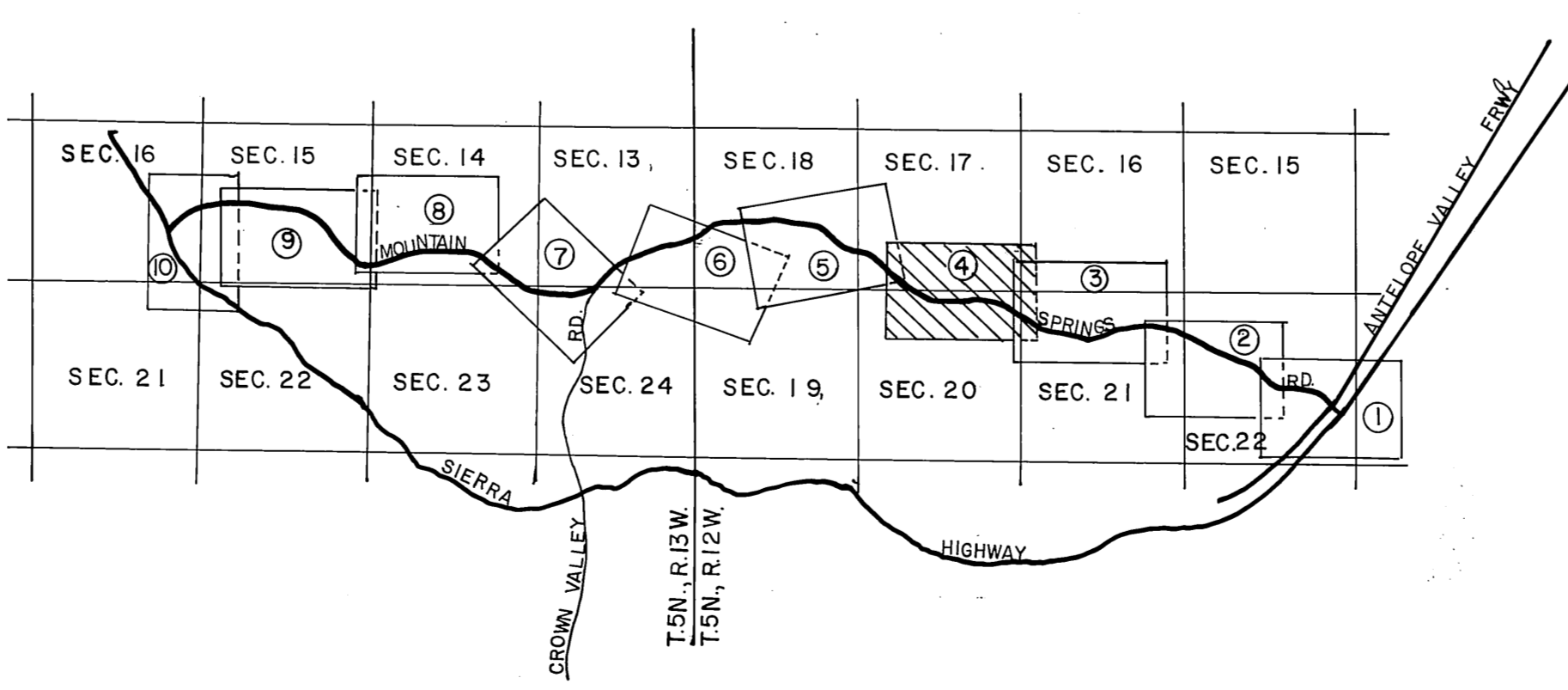


SECTION

20

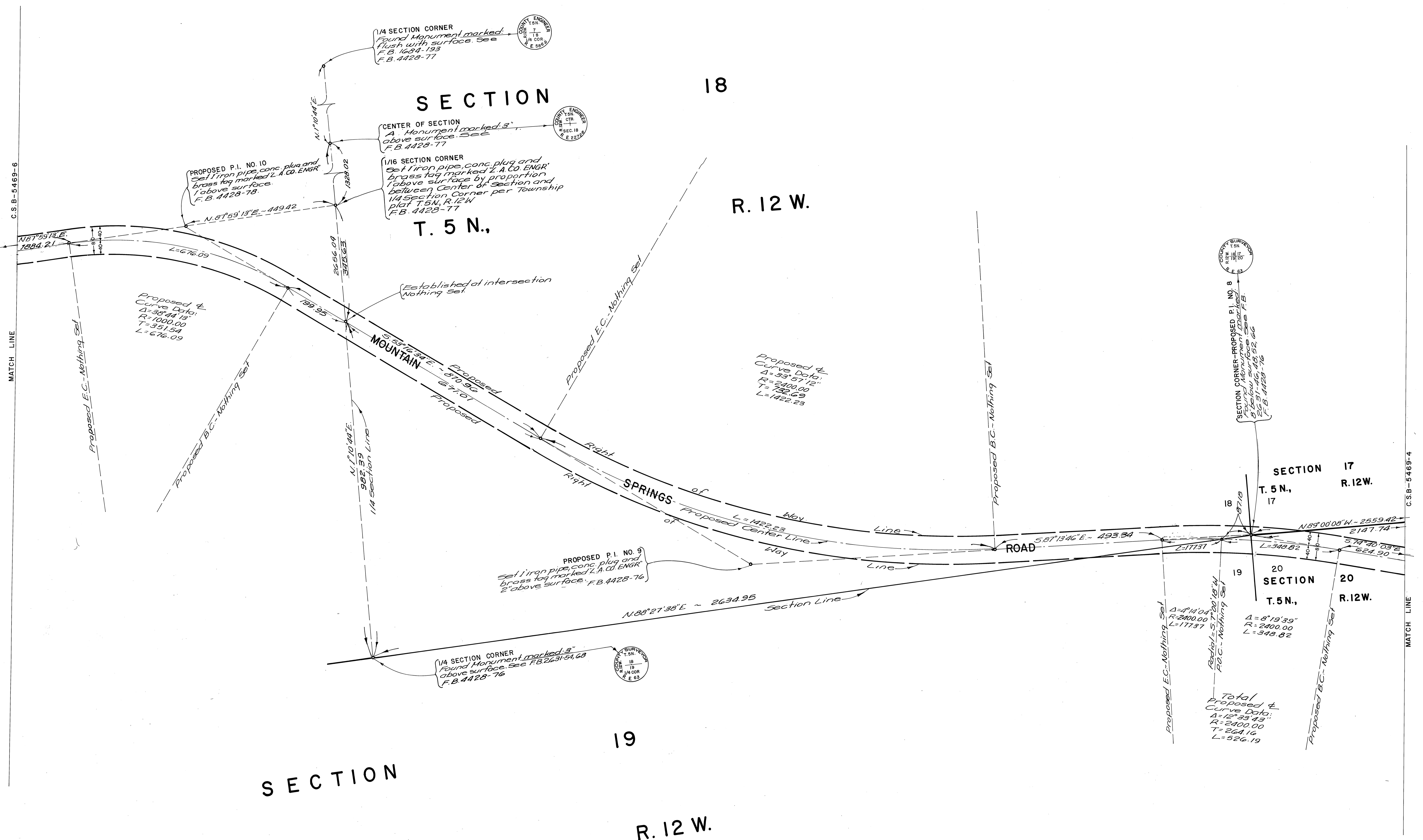
T. 5 N.,

R. 12 W.



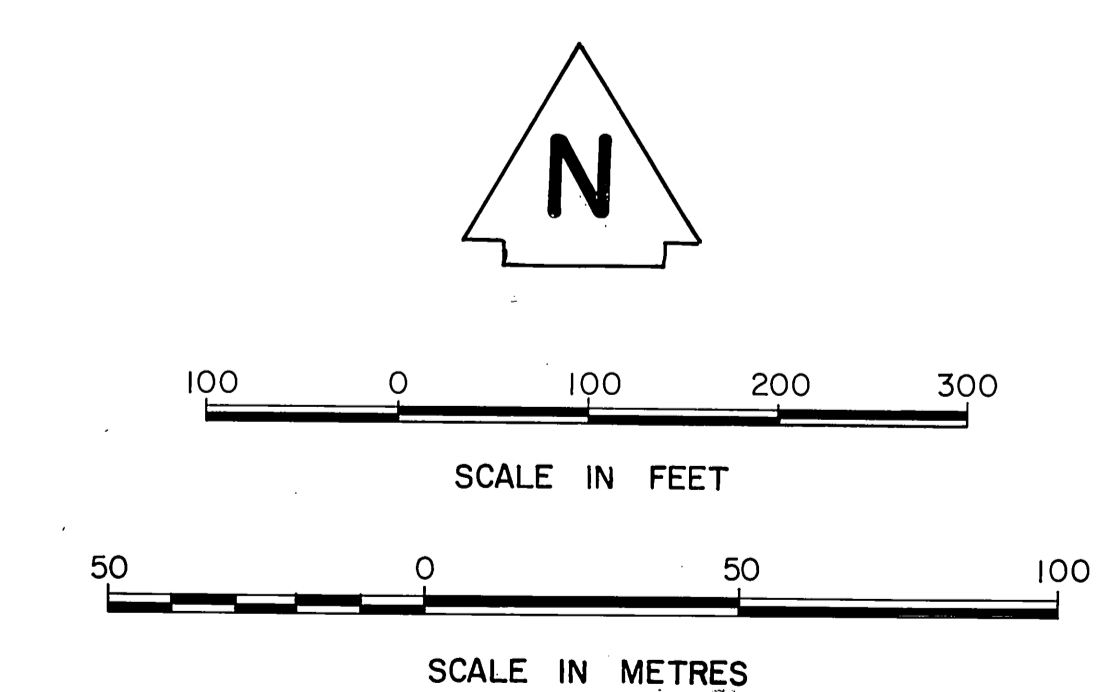
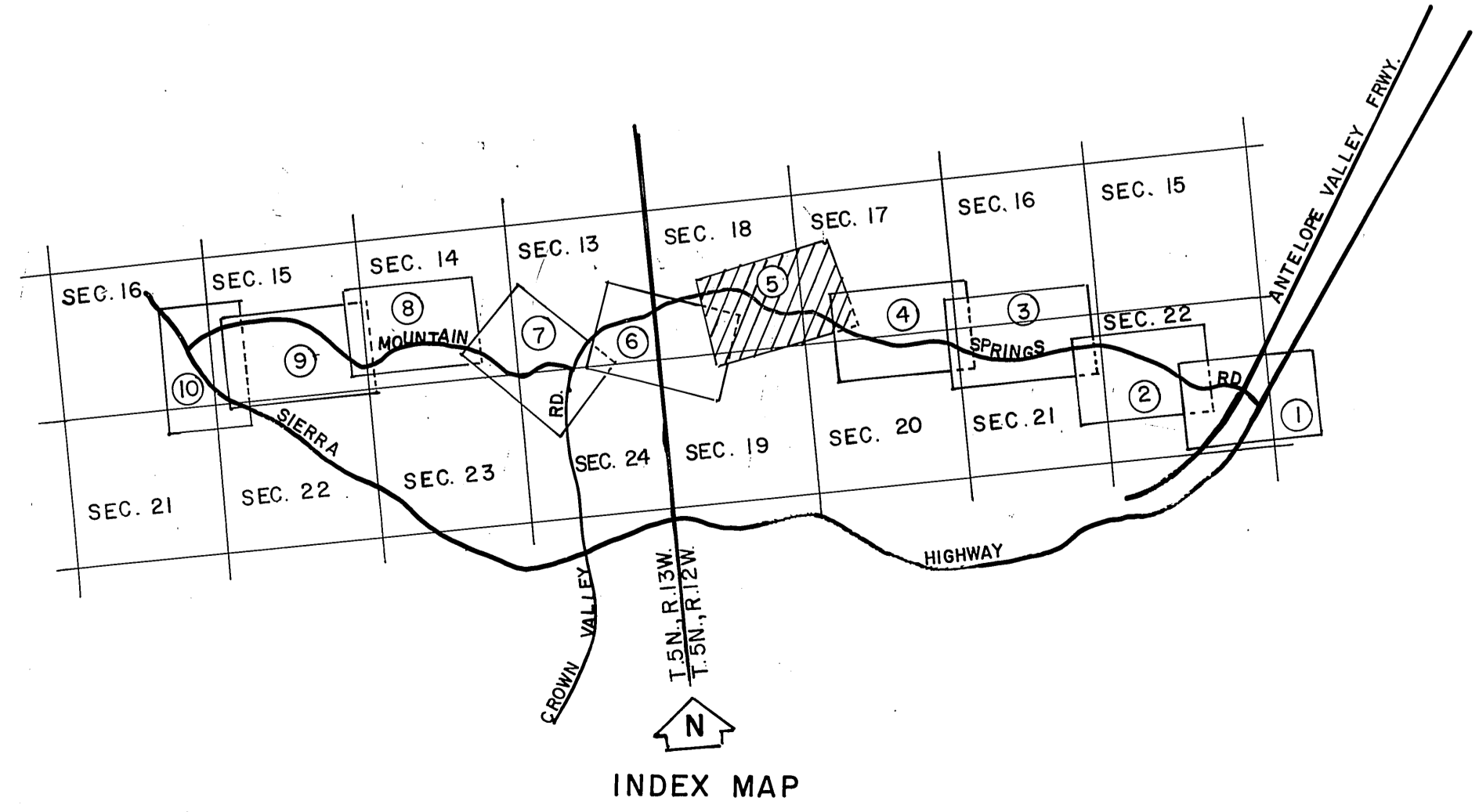
COUNTY OF LOS ANGELES DEPARTMENT OF COUNTY ENGINEER-FACILITIES STEPHEN J. KOONCE-COUNTY ENGINEER PREPARED BY SURVEY-LAND DEVELOPMENT DIVISION GIBSON PHELPS, JR. ASSISTANT DEPUTY COUNTY ENGINEER SURVEYED BY L. R. COVY CHECKED BY R. G. HILARIO DRAWN BY B. GOINS	ALIGNMENT MAP OF MOUNTAIN SPRINGS ROAD FROM SIERRA HIGHWAY TO SIERRA HIGHWAY BASIS OF BEARINGS CALIFORNIA COORDINATE SYSTEM, ZONE 7		COUNTY SURVEYOR'S MAP NO. B-5469 SHEET 4 OF 10 SHEETS FILED: 1983 APR 24 DEPT. SURVEYED APRIL 1983 REFERENCE F. B. 4428 JOB NUMBER 0220.11 INDEX MAP NO. 294-217, 294-237

C.S.B-2469-2



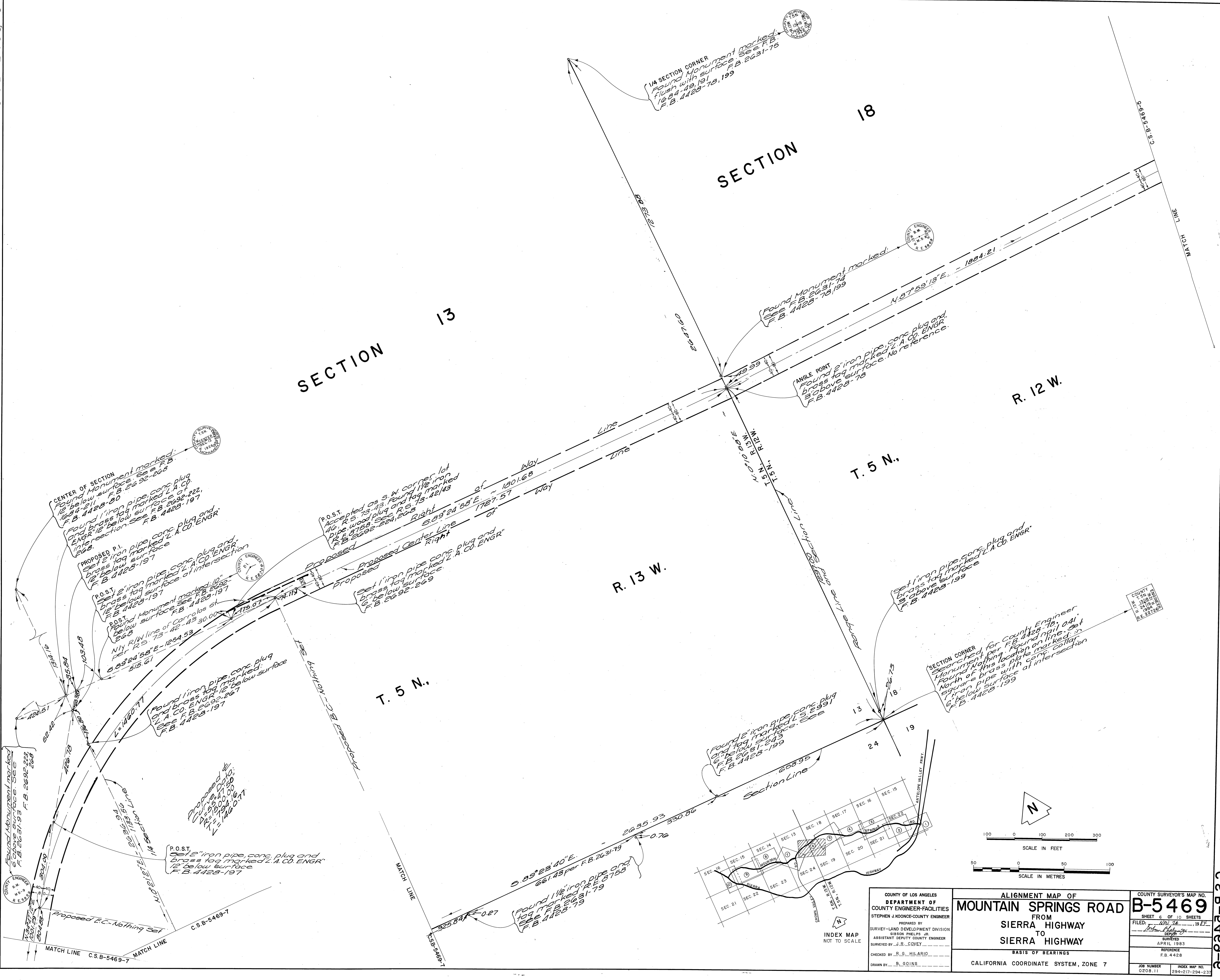
SECTION 18
SECTION 19
SECTION 20
SECTION 17

T. 5 N.
R. 12 W.



COUNTY OF LOS ANGELES DEPARTMENT OF COUNTY ENGINEER-FACILITIES STEPHEN J. KOONCE-COUNTY ENGINEER PREPARED BY SURVEY-LAND DEVELOPMENT DIVISION GIBSON PHELPS JR. ASSISTANT DEPUTY COUNTY ENGINEER SURVEYED BY J. R. COVEY CHECKED BY R. G. HILARIO DRAWN BY B. GOINS	ALIGNMENT MAP OF MOUNTAIN SPRINGS ROAD FROM SIERRA HIGHWAY TO SIERRA HIGHWAY BASIS OF BEARINGS CALIFORNIA COORDINATE SYSTEM, ZONE 7		COUNTY SURVEYOR'S MAP NO. B-5469 SHEET 5 OF 10 SHEETS FILED: <i>Nov 26</i> 1983 SURVEYED APRIL 1983 REFERENCE F. B. 4428 JOB NUMBER 0280.11 INDEX MAP NO. 294-217, 294-237

C.S.B-2469-2



1/4 SECTION CORNER
Found Monument marked
Flush with surface
F.B. 2631-75
1684.49, 191
F.B. 4428-78, 199

SECTION 18

SECTION 13

CENTER OF SECTION
Found Monument marked
bearing N 67° 53' 13" E.
distance 1884.21
F.B. 2631-75
1684.49, 191
F.B. 4428-78, 199

Found Monument marked:
bearing N 67° 53' 13" E.
distance 1884.21
F.B. 4428-78, 199

ANGLE POINT
Found 2" iron pipe, conc. plug and
brass tag marked L.A. CO. ENGR
3' above surface. No reference.
F.B. 4428-78

PROPOSED P.I.
Set 2" iron pipe, conc. plug and
brass tag marked L.A. CO. ENGR
12' below surface
F.B. 4428-197

P.O.S.T. Accepted as S.W. corner lot
10' R.S. 75, 43. Found 1 1/2" iron
pipe wood plug and tag marked
R.S. 13, 22/43
F.B. 2632-824, 2048

Set 1" iron pipe, conc. plug and
brass tag marked L.A. CO. ENGR
6' below surface
F.B. 2632-269

Set 1" iron pipe, conc. plug and
brass tag marked L.A. CO. ENGR
3' above surface
F.B. 4428-199

SECTION CORNER
Searched for County Engineer
Monument per F.B. 4428-78, 191.
Nothing found on line.
North of this location marked
2" iron pipe with conc. collar
6' below surface at intersection
F.B. 4428-199

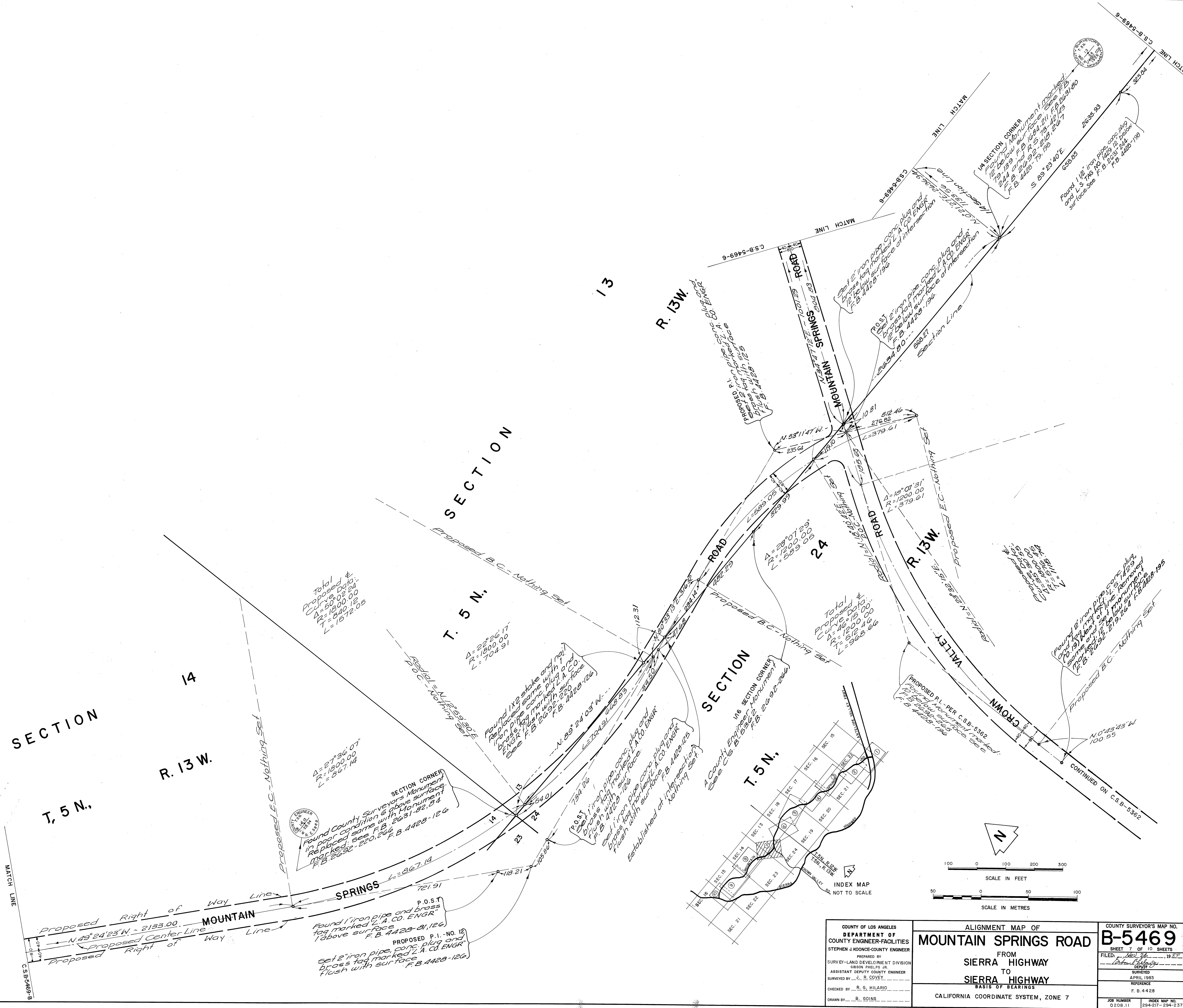
Found Monument marked
bearing N 67° 53' 13" E.
distance 1884.21
F.B. 2631-75
1684.49, 191
F.B. 4428-78, 199

P.O.S.T. Set 2" iron pipe, conc. plug and
brass tag marked L.A. CO. ENGR
12' below surface
F.B. 4428-197

Found 2" iron pipe, conc. plug
and tag marked L.A. CO. ENGR
6' below surface
F.B. 4428-199

Found 1 1/2" iron pipe and
tag marked R.S. 5758
F.B. 2631-79
F.B. 4428-79

<p>COUNTY OF LOS ANGELES DEPARTMENT OF COUNTY ENGINEER-FACILITIES STEPHEN J. KOONCE-COUNTY ENGINEER</p> <p>PREPARED BY SURVEY—LAND DEVELOPMENT DIVISION GIBSON, PHELPS JR. ASSISTANT DEPUTY COUNTY ENGINEER SURVEYED BY J. R. COVEY</p> <p>CHECKED BY R. S. HILARIO</p> <p>DRAWN BY B. GOINS</p>	<p>ALIGNMENT MAP OF MOUNTAIN SPRINGS ROAD FROM SIERRA HIGHWAY TO SIERRA HIGHWAY</p> <p>BASIS OF BEARINGS CALIFORNIA COORDINATE SYSTEM, ZONE 7</p>		<p>COUNTY SURVEYOR'S MAP NO. B-5469 SHEET 6 OF 10 SHEETS FILED: <i>12/11</i>, 1982 SURVEYED APRIL 1983 REFERENCE F.B. 4428</p>
	<p>JOB NUMBER 0208.11</p> <p>INDEX MAP NO. 294-217-294-237</p>		



COUNTY OF LOS ANGELES DEPARTMENT OF COUNTY ENGINEER-FACILITIES STEPHEN J. KOONCE-COUNTY ENGINEER PREPARED BY SURVEY-LAND DEVELOPMENT DIVISION OLBSON PHELPS JR. ASSISTANT DEPUTY COUNTY ENGINEER SURVEYED BY J. R. COVEY CHECKED BY R. G. HILARIO DRAWN BY B. GOINS	ALIGNMENT MAP OF MOUNTAIN SPRINGS ROAD FROM SIERRA HIGHWAY TO SIERRA HIGHWAY BASIS OF BEARINGS CALIFORNIA COORDINATE SYSTEM, ZONE 7		COUNTY SURVEYOR'S MAP NO. B-5469 SHEET 7 OF 10 SHEETS FILED: <i>Nov 26</i> 1984 DEPUTY SURVEYED APRIL 1983 REFERENCE F. B. 4428
	SCALE IN FEET 0 100 200 300		SCALE IN METRES 0 50 100
	INDEX MAP NOT TO SCALE		CONTINUED ON C.S.B. 5362
	JOB NUMBER 0208.11		INDEX MAP NO. 294-217-294-237

C.S.B-5469-9
MATCH LINE

$N. 83^{\circ} 47' 33'' W. - 2169.69$
Transit Line

SECTION

14

MOUNTAIN

T. 5 N.,

SPRINGS

R. 14 W.

ROAD

$N. 63^{\circ} 24' 23'' W. - 2183.00$
MATCH LINE

PROPOSED P.I. NO. 13
SOUTH 1/4 SEC. 19
CONCRETE
24" DIAMETER
20' BENCH MARK
L.A. CO. ENGINEER
P. B. 4428-02

C.S.B-5469-6
MATCH LINE

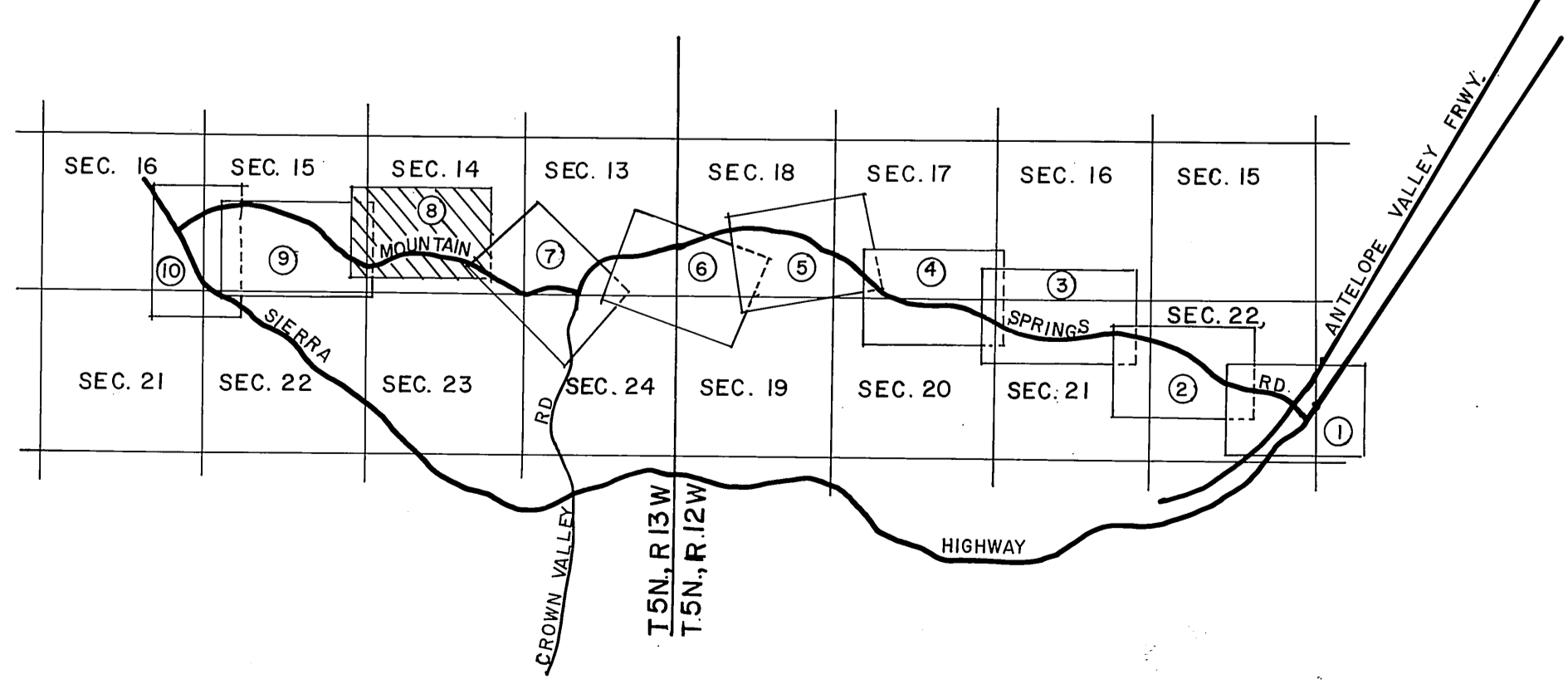
$S. 71^{\circ} 32' 59'' W. - 1397.44$

MATCH LINE

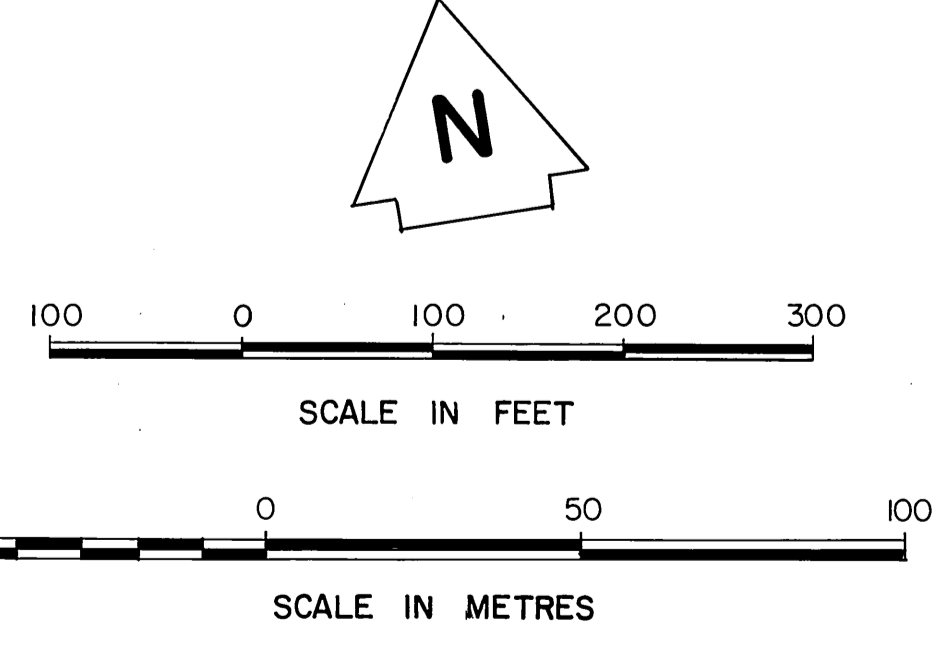
Proposed Right of Way Line
Proposed Center Line
Proposed Right of Way Line
 $L = 1854.92$

Proposed E.C. - Nothing Set
 $125' E. of P.O.P.$

Proposed E.
Curve Data:
 $\Delta = 59^{\circ} 02' 36''$
 $R = 1200.00$
 $T = 1019.30$
 $L = 1854.92$



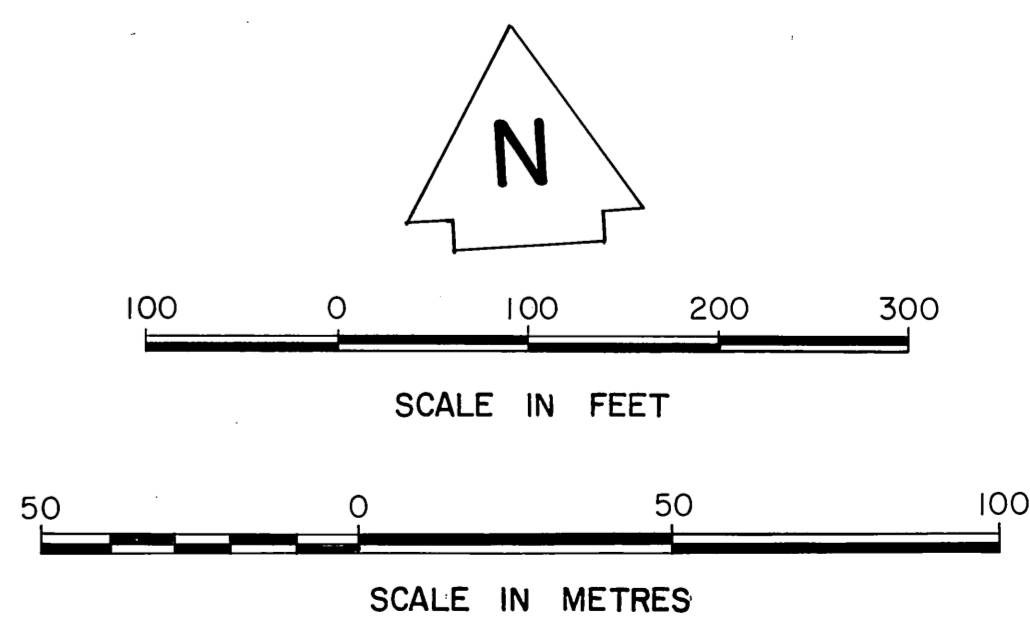
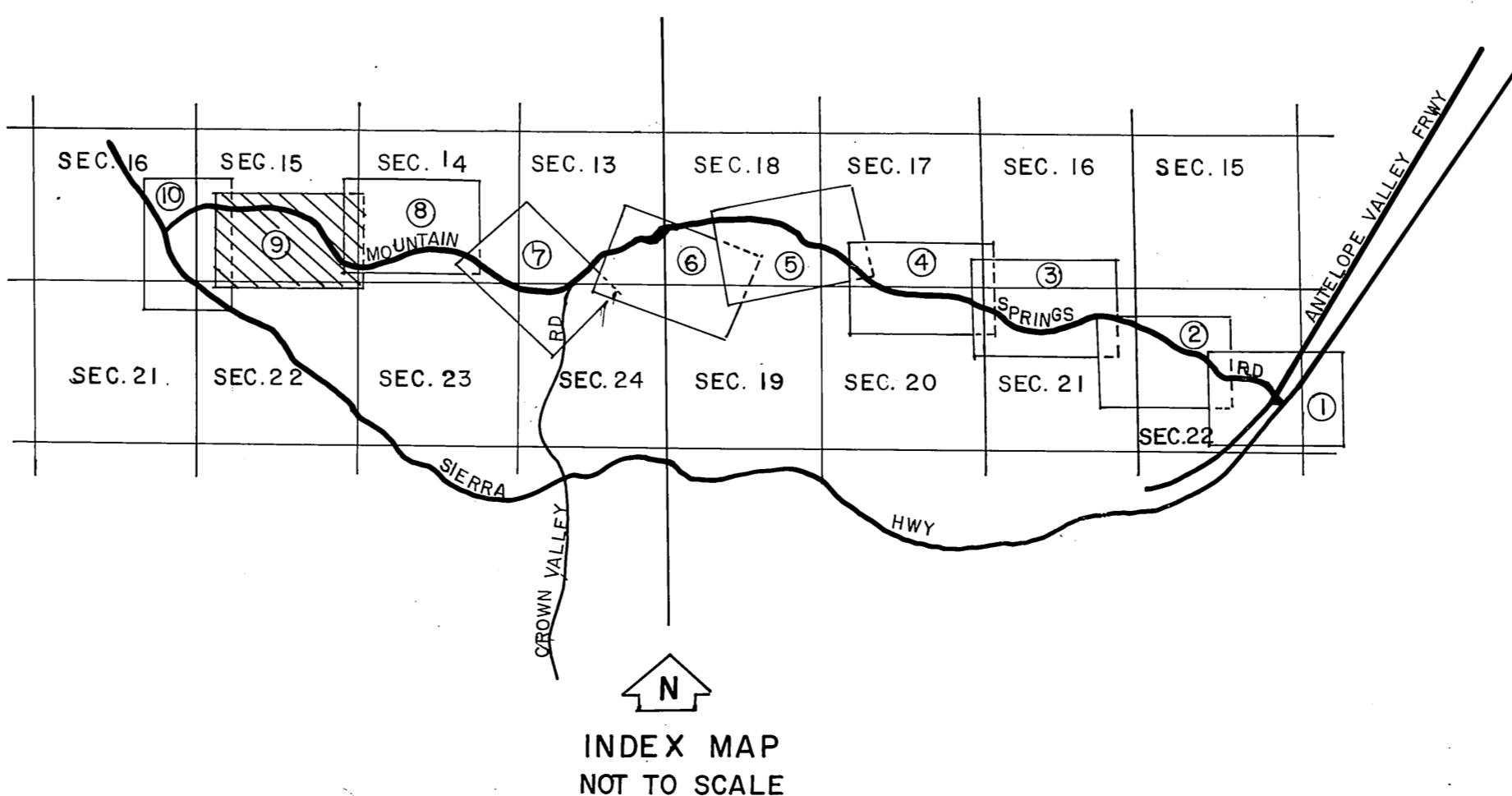
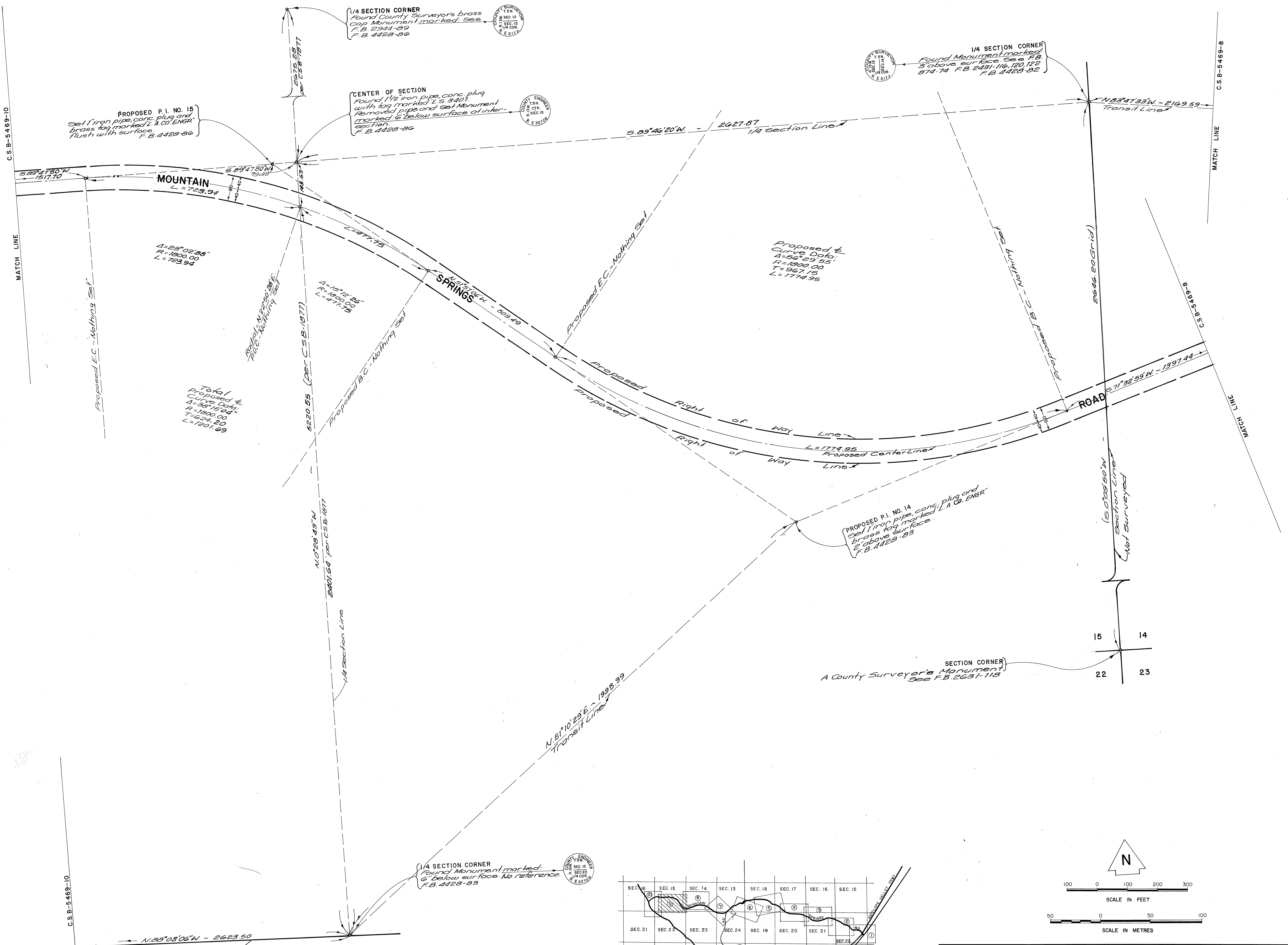
INDEX MAP
NOT TO SCALE



COUNTY OF LOS ANGELES
DEPARTMENT OF
COUNTY ENGINEER-FACILITIES
STEPHEN J. KOONCE-COUNTY ENGINEER
PREPARED BY
SURVEY-LAND DEVELOPMENT DIVISION
GIBSON, PHELPS, JR.
ASSISTANT DEPUTY COUNTY ENGINEER
SURVEYED BY J. R. COVEY
CHECKED BY R. G. HILARIO
DRAWN BY B. GOINS

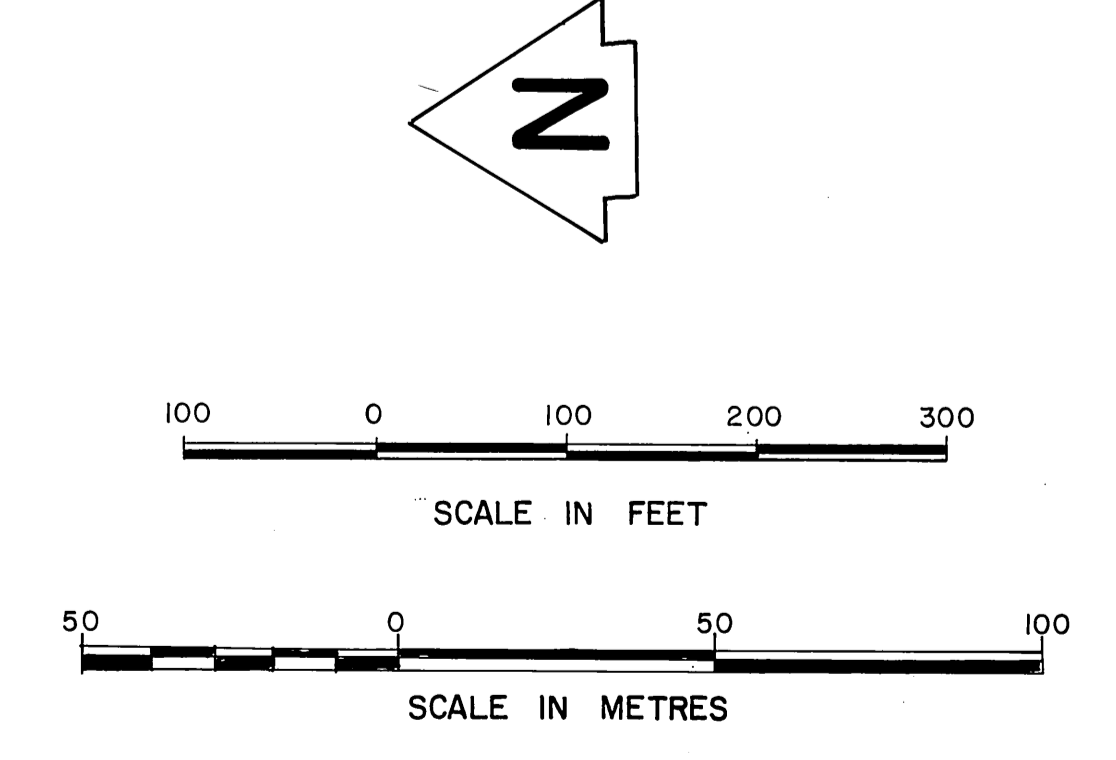
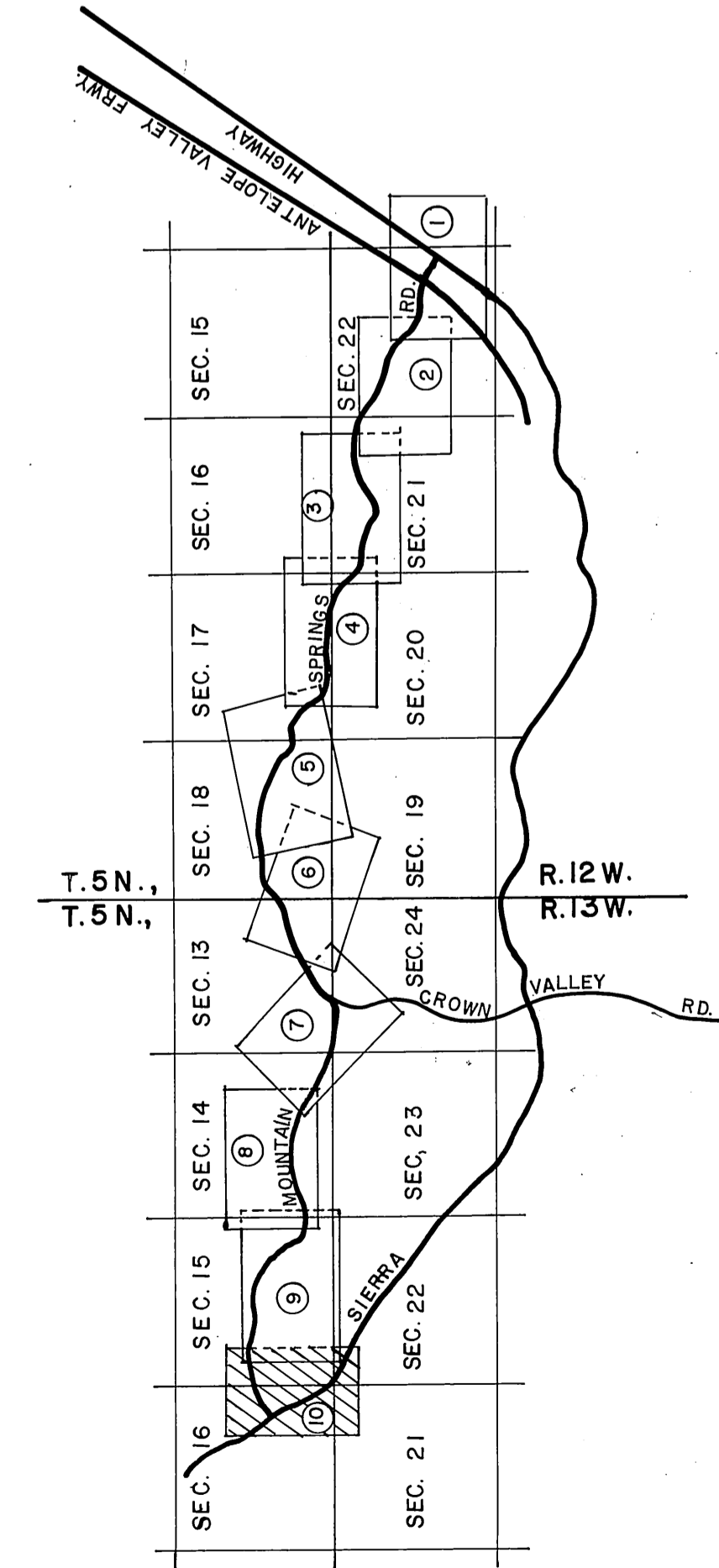
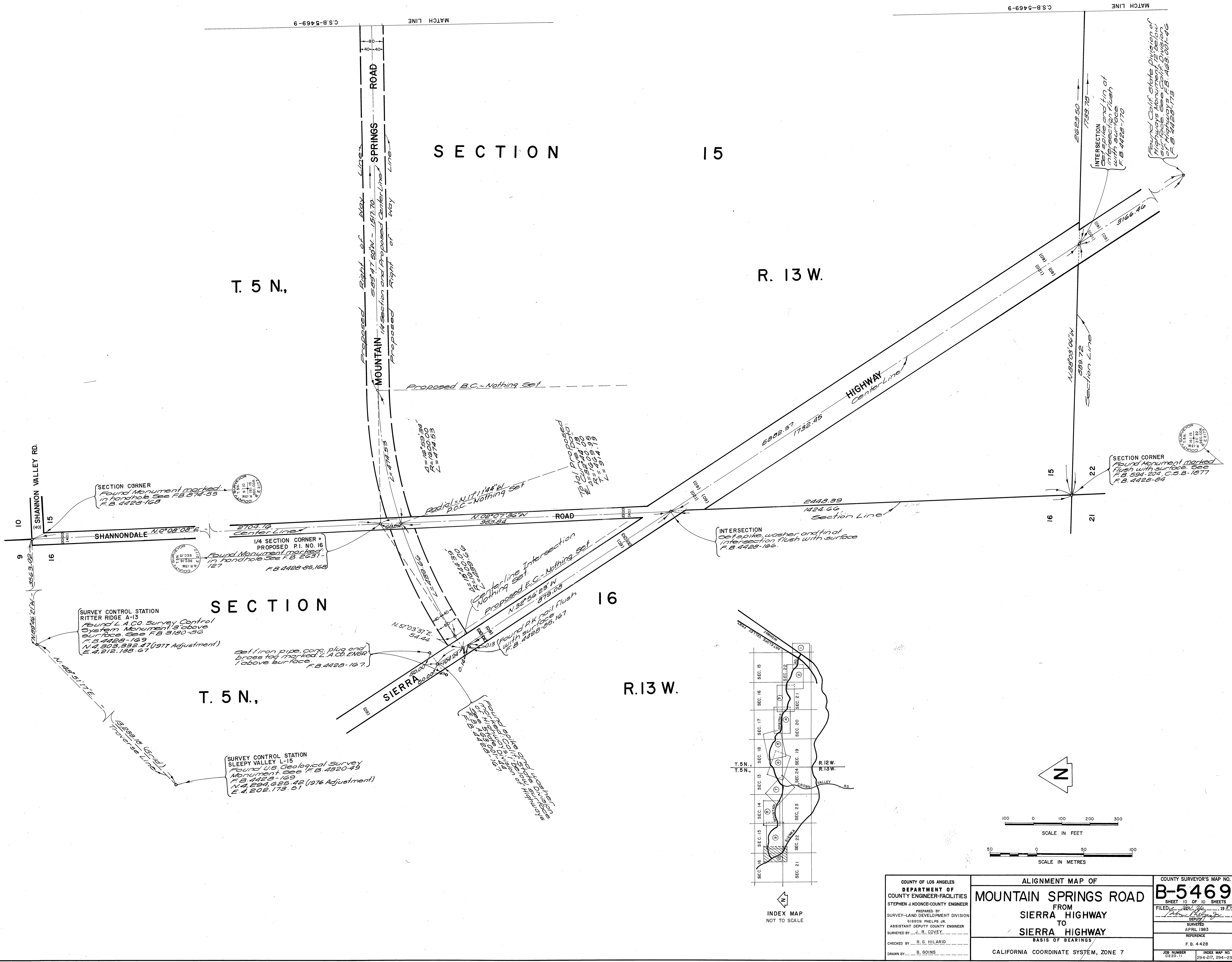
ALIGNMENT MAP OF
MOUNTAIN SPRINGS ROAD
FROM
SIERRA HIGHWAY
TO
SIERRA HIGHWAY
BASIS OF BEARINGS
CALIFORNIA COORDINATE SYSTEM, ZONE 7

COUNTY SURVEYOR'S MAP NO.
B-5469
SHEET 8 OF 10 SHEETS
FILED: *[Signature]*, 1983
[Signature]
APRIL 1983
REFERENCE
F. B. 4428
JOB NUMBER 0220-11 INDEX MAP NO. 294-217, 294-237



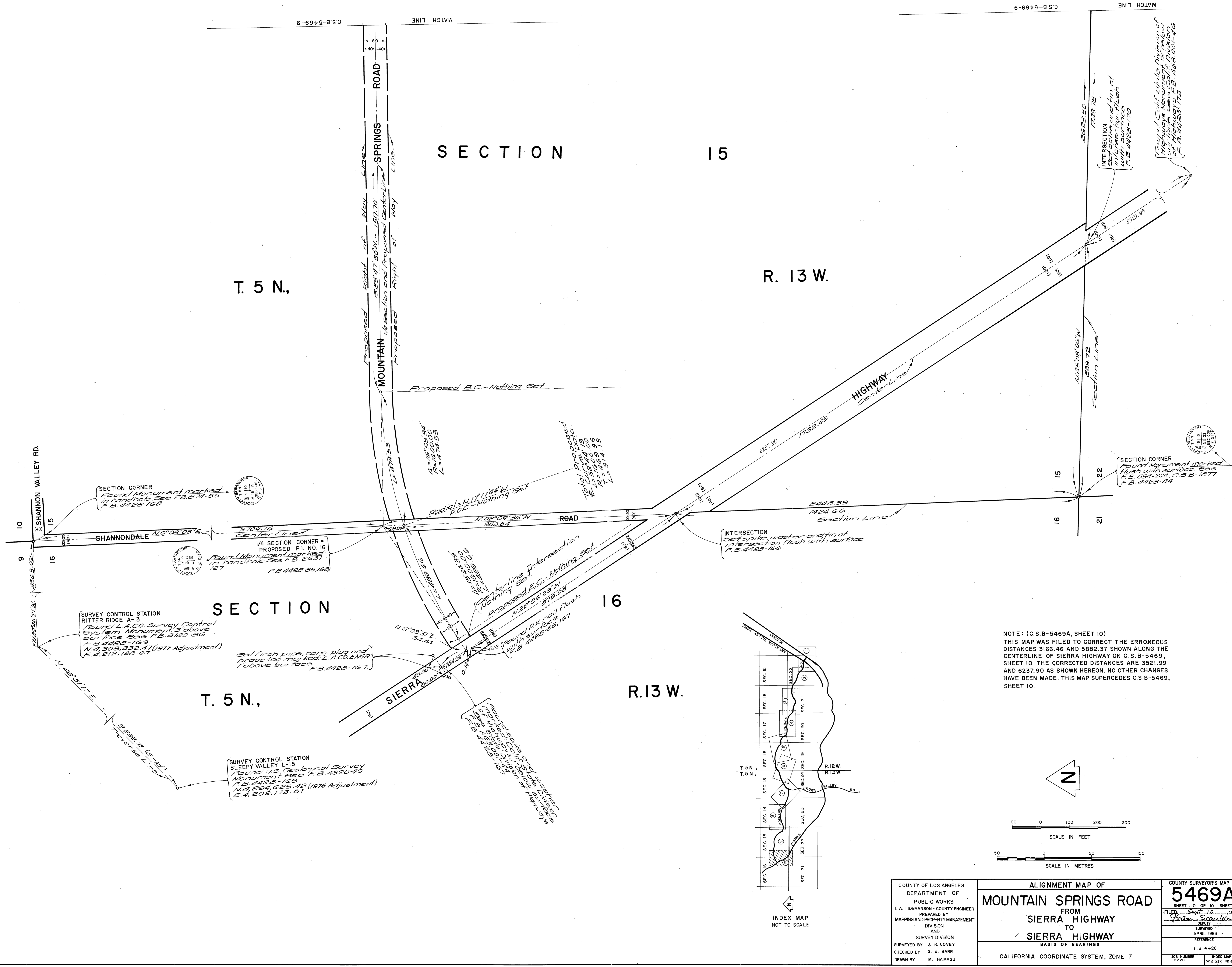
COUNTY OF LOS ANGELES DEPARTMENT OF COUNTY ENGINEER-FACILITIES STEPHEN J. KOONCE-COUNTY ENGINEER PREPARED BY SURVEY-LAND DEVELOPMENT DIVISION GIBSON PHELPS JR. ASSISTANT DEPUTY COUNTY ENGINEER SURVEYED BY J. R. COVEY CHECKED BY R. G. HILARIO DRAWN BY B. GOINS	ALIGNMENT MAP OF MOUNTAIN SPRINGS ROAD FROM SIERRA HIGHWAY TO SIERRA HIGHWAY BASIS OF BEARINGS CALIFORNIA COORDINATE SYSTEM, ZONE 7		COUNTY SURVEYOR'S MAP NO. B-5469 SHEET 9 OF 10 SHEETS FILED: <i>[Signature]</i> 19 24 DEPUTY SURVEYED APRIL 1983 REFERENCE F.B. 4428
	JOB NUMBER 0220.11		INDEX MAP NO. 294-217, 294-237

C:2-B-2409-10

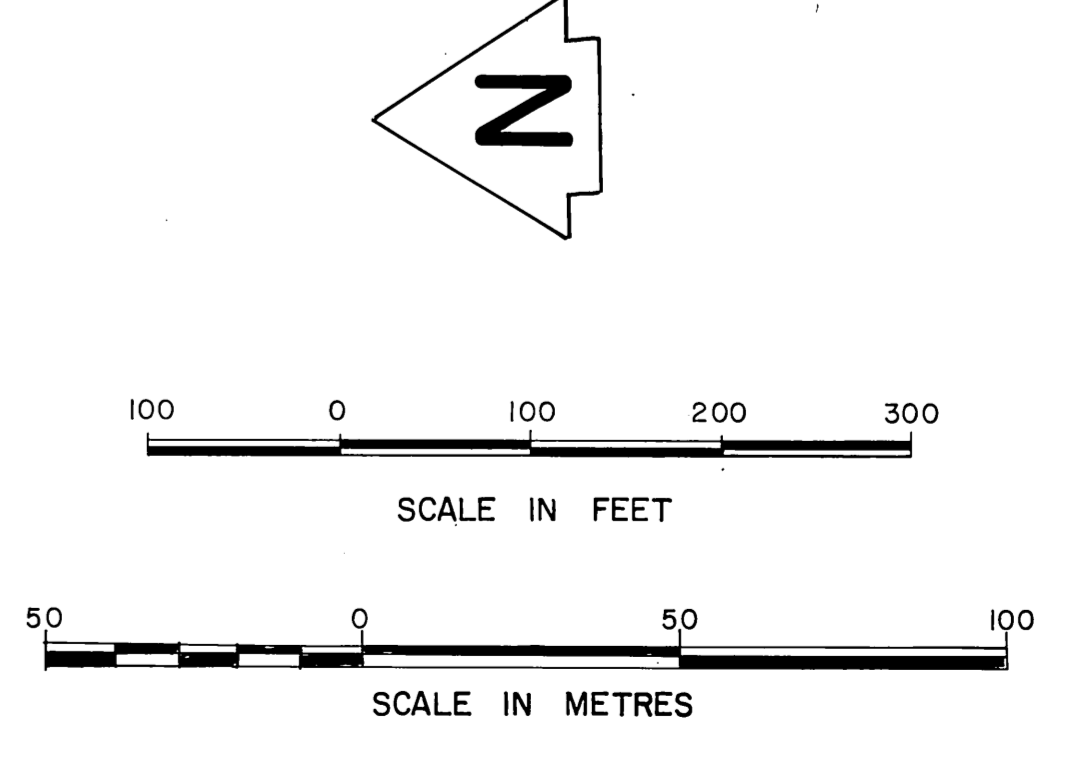
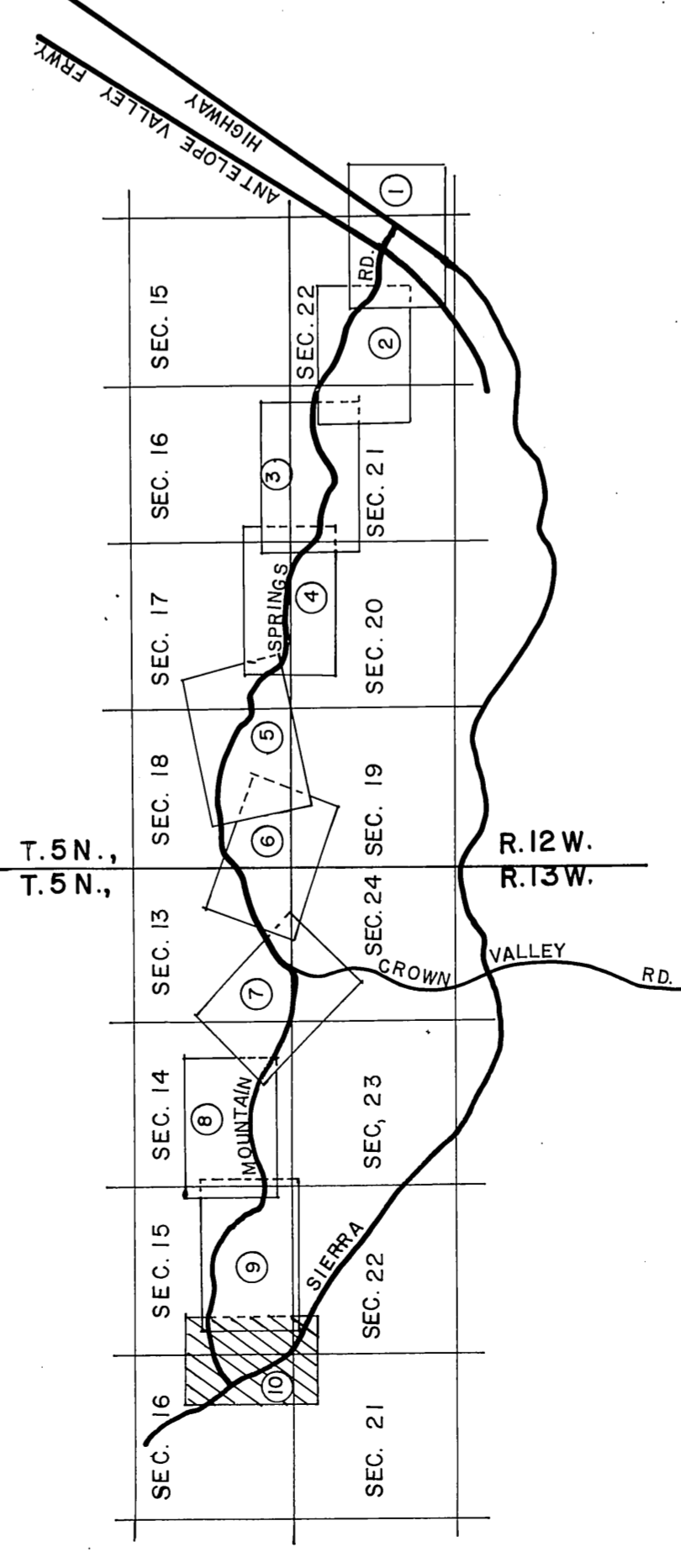


COUNTY OF LOS ANGELES DEPARTMENT OF COUNTY ENGINEER-FACILITIES STEPHEN J. KOONCE-COUNTY ENGINEER PREPARED BY SURVEY-LAND DEVELOPMENT DIVISION GIBSON PHELPS JR. ASSISTANT DEPUTY COUNTY ENGINEER SURVEYED BY J. R. COVEY CHECKED BY R. G. HILARIO DRAWN BY B. GOINS	ALIGNMENT MAP OF MOUNTAIN SPRINGS ROAD FROM SIERRA HIGHWAY TO SIERRA HIGHWAY BASIS OF BEARINGS	COUNTY SURVEYOR'S MAP NO. B-5469 SHEET 10 OF 10 SHEETS FILED: <i>Nov 20 1983</i> DEPUTY SURVEYED APRIL 1983 REFERENCE F.B. 4428
	CALIFORNIA COORDINATE SYSTEM, ZONE 7	

C:2-B-2409-10



NOTE: (C.S.B. 5469A, SHEET 10)
 THIS MAP WAS FILED TO CORRECT THE ERRONEOUS DISTANCES 3166.46 AND 5882.37 SHOWN ALONG THE CENTERLINE OF SIERRA HIGHWAY ON C.S.B. 5469, SHEET 10. THE CORRECTED DISTANCES ARE 3521.99 AND 6237.90 AS SHOWN HEREON. NO OTHER CHANGES HAVE BEEN MADE. THIS MAP SUPERCEDES C.S.B. 5469, SHEET 10.



COUNTY OF LOS ANGELES DEPARTMENT OF PUBLIC WORKS T. A. TIDEMANSON - COUNTY ENGINEER PREPARED BY MAPPING AND PROPERTY MANAGEMENT DIVISION AND SURVEY DIVISION SURVEYED BY J. R. COVEY CHECKED BY G. E. BARR DRAWN BY M. HAMASU	ALIGNMENT MAP OF MOUNTAIN SPRINGS ROAD FROM SIERRA HIGHWAY TO SIERRA HIGHWAY BASIS OF BEARINGS	COUNTY SURVEYOR'S MAP NO. 5469A SHEET 10 OF 10 SHEETS FILED <i>Scott</i> 10, 1992 <i>Patricia Scanlon</i> DEPUTY SURVEYOR APRIL 1983 REFERENCE F.B. 4428
	CALIFORNIA COORDINATE SYSTEM, ZONE 7	
JOB NUMBER 0220-11		INDEX MAP No. 2 294-217, 294-237