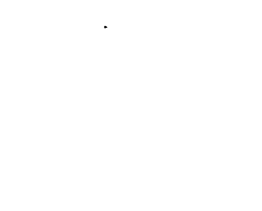


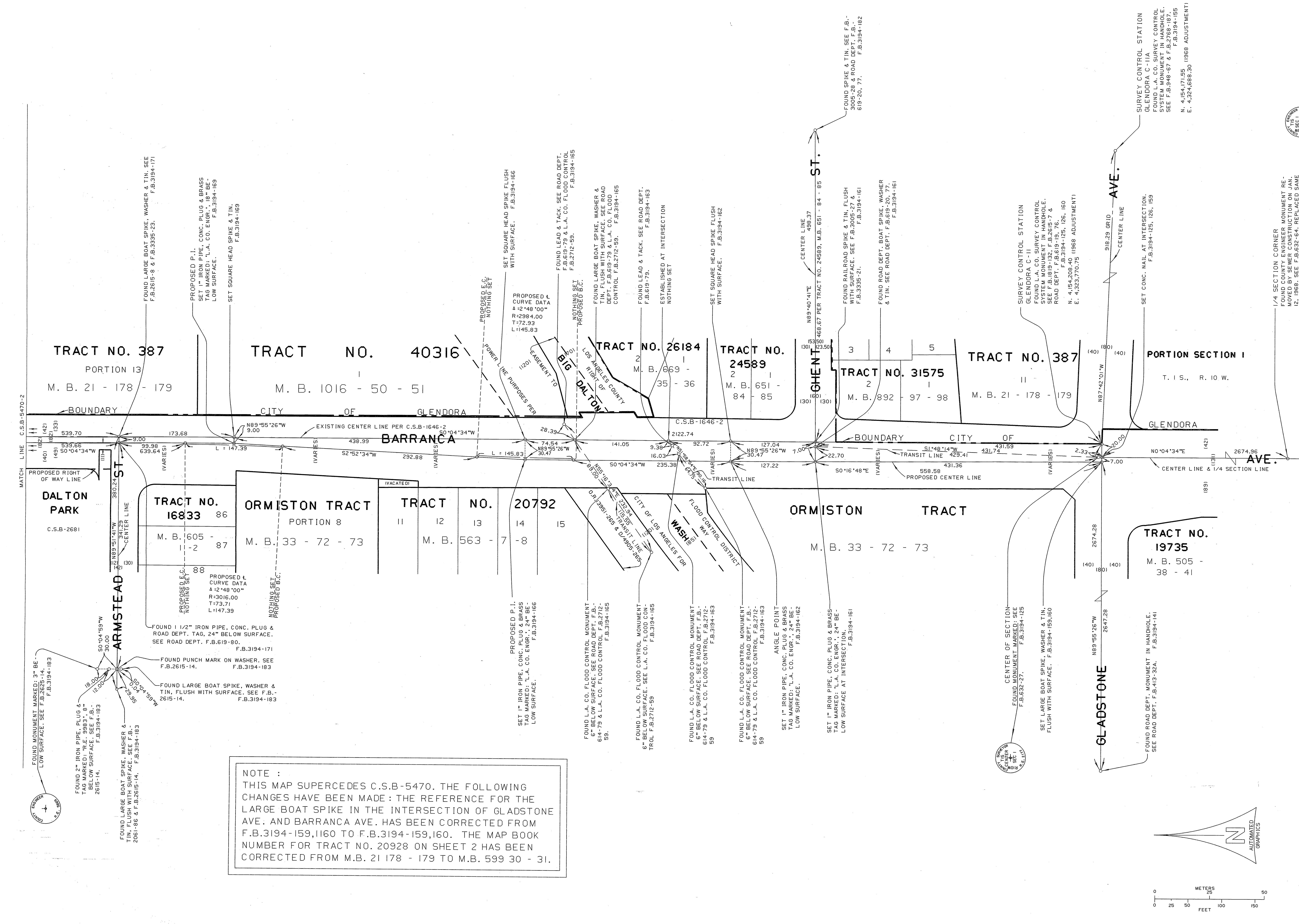
1/4 SECTION CORNER
 FOUND COUNTY ENGINEER MONUMENT RE-
 MOVED BY SEWER CONSTRUCTION ON JAN.
 1968. SEE F.B. 3194-117 FOR THE
 MONUMENT MARKED IN HANDHOLE.
 WITH MONUMENT MARKED IN HANDHOLE.
 F.B. 3194-117



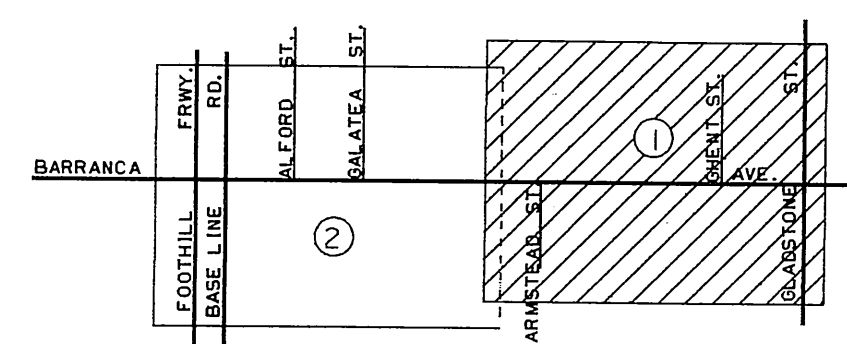
1/4 SECTION CORNER
 FOUND COUNTY ENGINEER MONUMENT RE-
 MOVED BY SEWER CONSTRUCTION ON JAN.
 1968. SEE F.B. 3194-117 FOR THE
 MONUMENT MARKED IN HANDHOLE.
 WITH MONUMENT MARKED IN HANDHOLE.
 F.B. 3194-117

NOTE :
 THIS MAP DELINEATES THE REVISED ALIGNMENT
 OF BARRANCA AVE. (FORMERLY BEN LOMOND AVE.)
 ADOPTED BY THE I.E.C. DATED APRIL 27, 1967 AND
 SUPERSEDES C.S.B-1646 & C.S.B-2933 WITHIN THE
 LIMITS HEREON.

COUNTY OF LOS ANGELES DEPARTMENT OF PUBLIC WORKS T. A. TIDEMANSON - COUNTY ENGINEER PREPARED BY MAPPING AND PROPERTY MANAGEMENT DIVISION SURVEYED BY J. H. BROWN CHECKED BY R. H. LARRO DRAWN BY G. MASUDA	MAP OF BARRANCA AVE. FROM GLADSTONE AVE. TO BASE LINE ROAD BASIS OF BEARINGS CALIFORNIA COORDINATE SYSTEM, ZONE 7	COUNTY SURVEYOR'S MAP NO B-5470 SHEET 1 OF 2 SHEETS FILED: <i>2/27/68</i> COUNTY OF LOS ANGELES SURVEYED FEB. 1968 REFERENCE F.B. 3194
	JOB NUMBER 0208.11	INDEX MAP NO 144-317

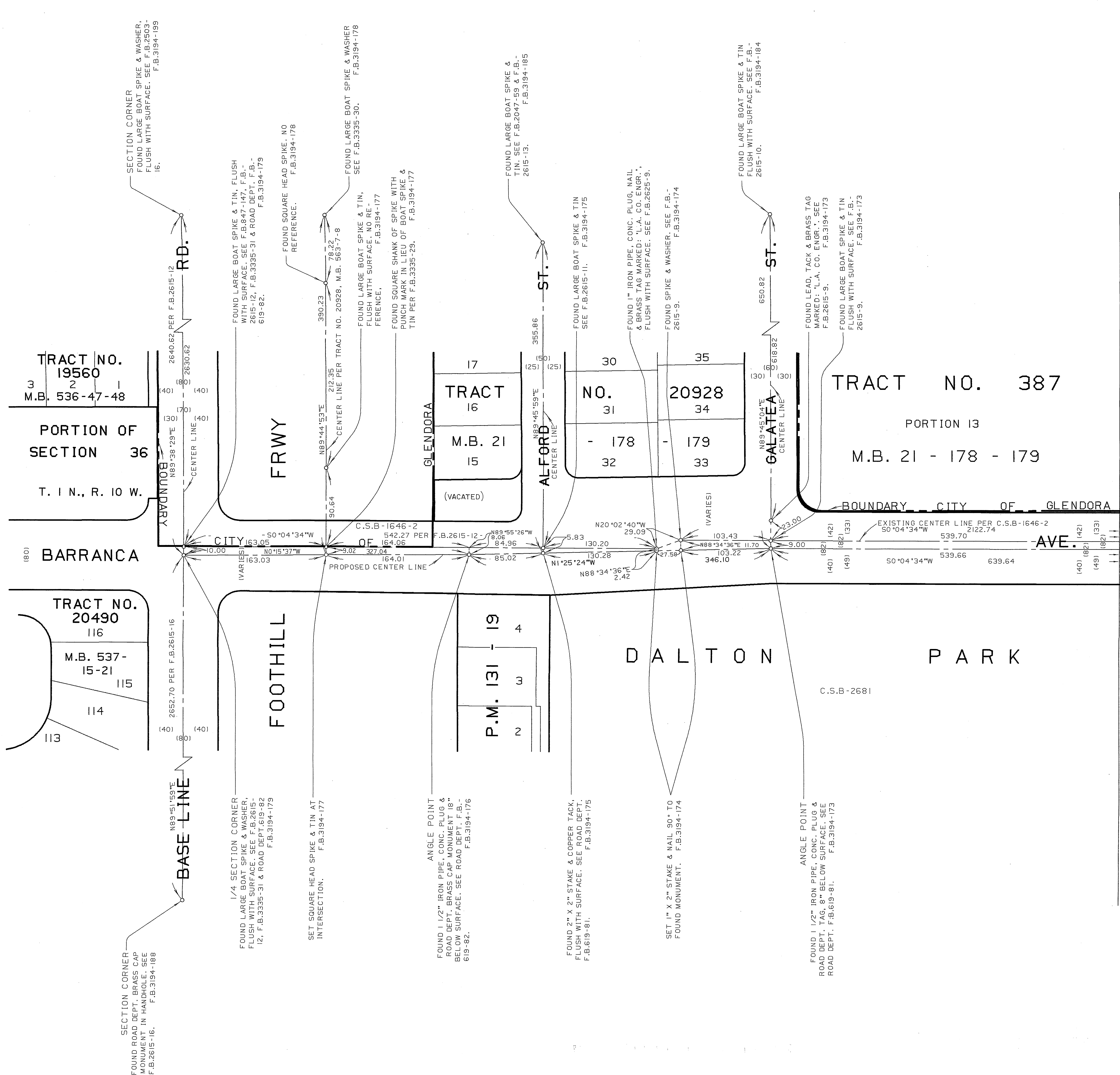


NOTE :
 THIS MAP SUPERCEDES C.S.B-5470. THE FOLLOWING CHANGES HAVE BEEN MADE : THE REFERENCE FOR THE LARGE BOAT SPIKE IN THE INTERSECTION OF GLADSTONE AVE. AND BARRANCA AVE. HAS BEEN CORRECTED FROM F.B.3194-159,1160 TO F.B.3194-159,160. THE MAP BOOK NUMBER FOR TRACT NO. 20928 ON SHEET 2 HAS BEEN CORRECTED FROM M.B. 21 178 - 179 TO M.B. 599 30 - 31.



NOTE :
 THIS MAP DELINEATES THE REVISED ALIGNMENT OF BARRANCA AVE. (FORMERLY BEN LOMOND AVE.) ADOPTED BY THE I.E.C. DATED APRIL 27, 1967 AND SUPERSEDES C.S.B-1646 & C.S.B-2933 WITHIN THE LIMITS HEREON.

COUNTY OF LOS ANGELES DEPARTMENT OF PUBLIC WORKS T. A. TIDEMANSON - COUNTY ENGINEER PREPARED BY MAPPING AND PROPERTY MANAGEMENT DIVISION AND SURVEY DIVISION SURVEYED BY J. H. BROWN CHECKED BY R. HILARIO DRAWN BY G. MASUDA	MAP OF BARRANCA AVE. FROM GLADSTONE AVE. TO BASE LINE ROAD	COUNTY SURVEYOR'S MAP NO B-5470A SHEET 1 OF 2 SHEETS FILED: OCT 25 1968 ASST. DEPUTY DIRECTOR SURVEYED FEB. 1968 REFERENCE F.B. 3194
	BASIS OF BEARINGS CALIFORNIA COORDINATE SYSTEM, ZONE 7	
JOB NUMBER 0208.11	INDEX MAP NO 144-317	



SECTION CORNER
FOUND ROAD DEPT. BRASS CAP
MONUMENT IN HANDHOLE - SEE
F.B.2615-16, F.B.3194-188

1/4 SECTION CORNER
FOUND LARGE BOAT SPIKE & WASHER,
FLUSH WITH SURFACE. SEE F.B.619-82
12, F.B.3335-31 & ROAD DEPT. 619-82
F.B.3194-179

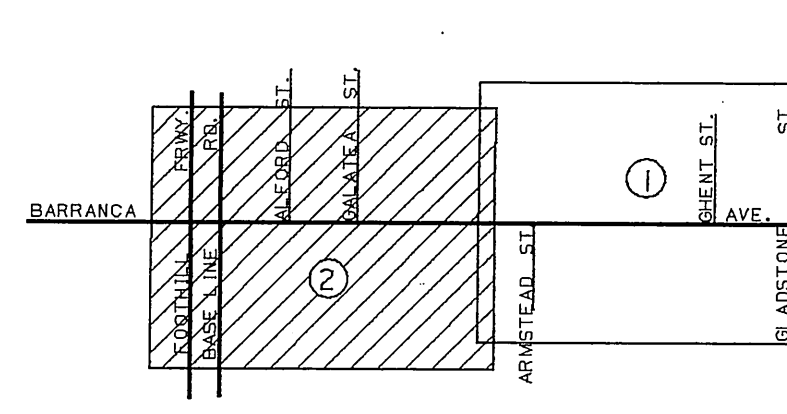
SET SQUARE HEAD SPIKE & TIN AT
INTERSECTION.
F.B.3194-177

ANGLE POINT
FOUND 1 1/2" IRON PIPE, CONC. PLUG &
ROAD DEPT. BRASS CAP MONUMENT 18"
6" BELOW SURFACE. SEE ROAD DEPT. F.B.
619-82.
F.B.3194-176

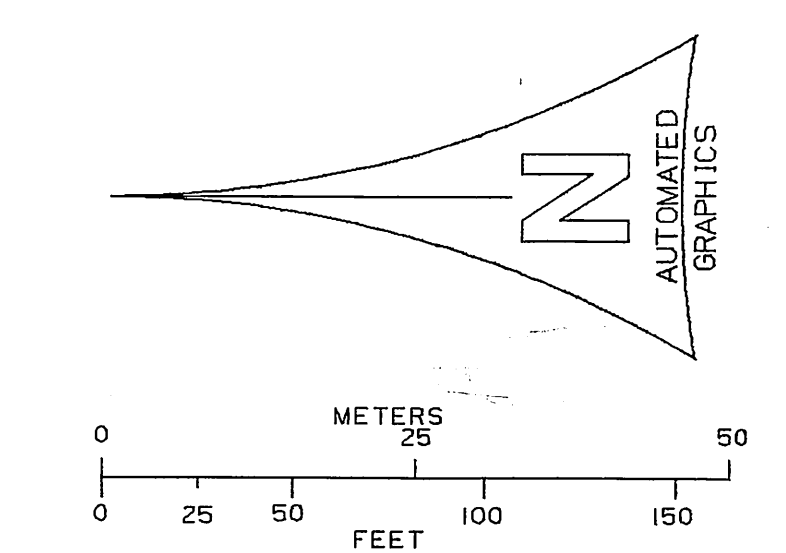
FOUND 2" X 2" STAKE & COPPER TACK,
FLUSH WITH SURFACE. SEE ROAD DEPT.
F.B.619-81.
F.B.3194-175

SET 1" X 2" STAKE & NAIL 90° TO
FOUND MONUMENT. F.B.3194-174

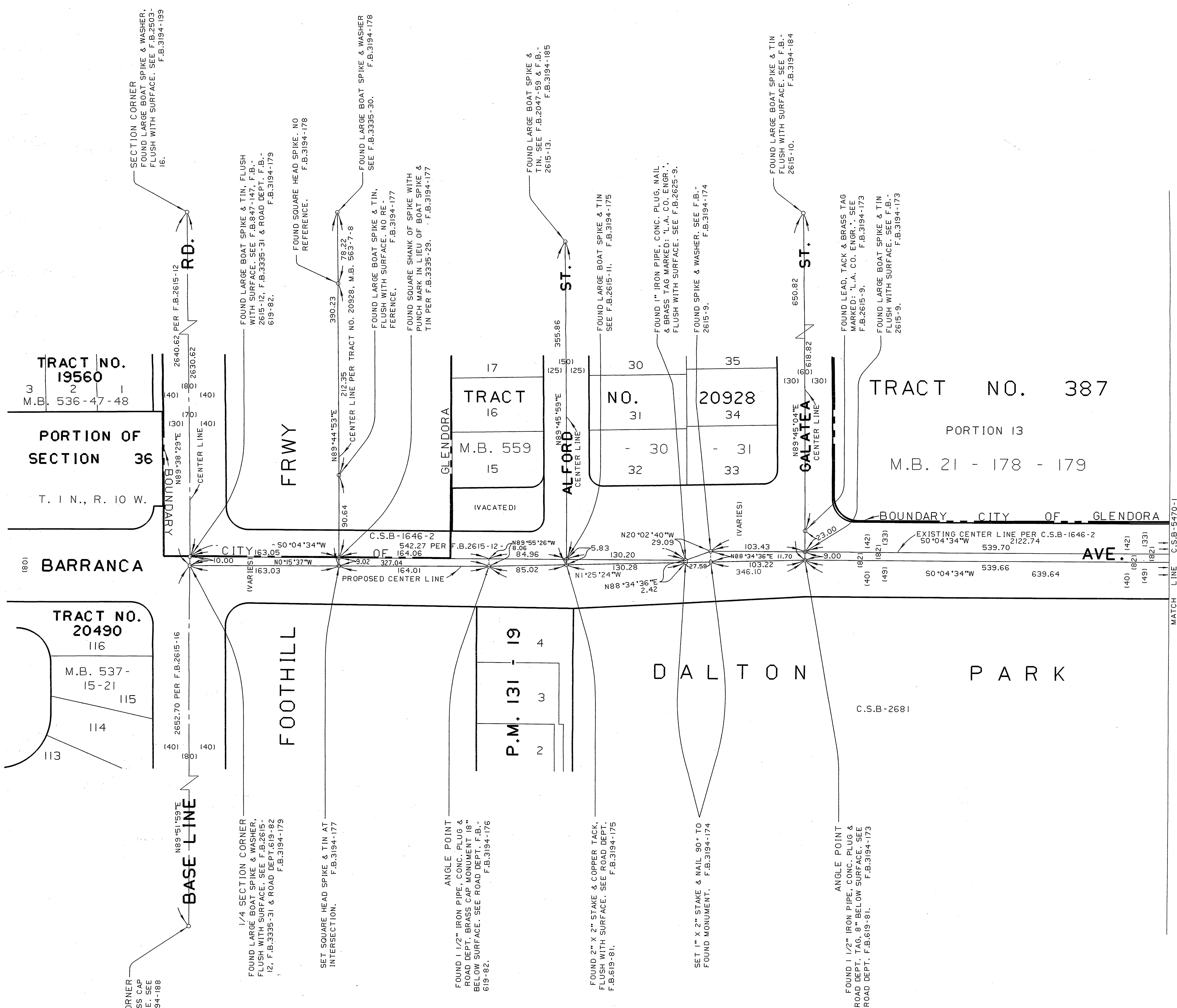
ANGLE POINT
FOUND 1 1/2" IRON PIPE, CONC. PLUG &
ROAD DEPT. TAG, 8" BELOW SURFACE. SEE
ROAD DEPT. F.B.619-81.
F.B.3194-173



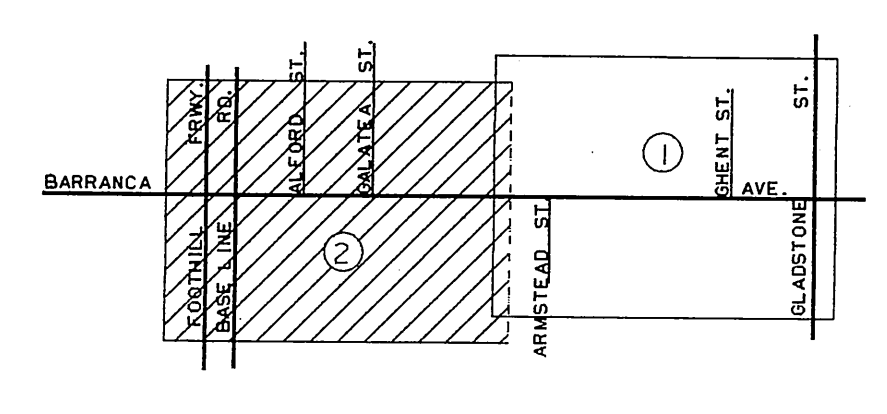
NOTE :
THIS MAP DELINEATES THE REVISED ALIGNMENT
OF BARRANCA AVE. (FORMERLY BEN LOMOND AVE.)
ADOPTED BY THE I.E.C. DATED APRIL 27, 1967 AND
SUPERSEDES C.S.B-1646 & C.S.B-2933 WITHIN THE
LIMITS HEREON.



COUNTY OF LOS ANGELES DEPARTMENT OF PUBLIC WORKS T. A. TIDEMANSON - COUNTY ENGINEER PREPARED BY MAPPING AND PROPERTY MANAGEMENT DIVISION SURVEYED BY J. H. BROWN CHECKED BY B. HILARIO DRAWN BY S. MASUDA	MAP OF BARRANCA AVE. FROM GLADSTONE AVE. TO BASE LINE ROAD BASIS OF BEARINGS CALIFORNIA COORDINATE SYSTEM, ZONE 7		COUNTY SURVEYOR'S MAP NO B-5470 SHEET 2 OF 2 SHEETS FILED: 3/25/68 COUNTY ENGINEER SURVEYED FEB. 1968 REFERENCE F.B. 3194
			JOB NUMBER 0208.11 INDEX MAP NO 144-317

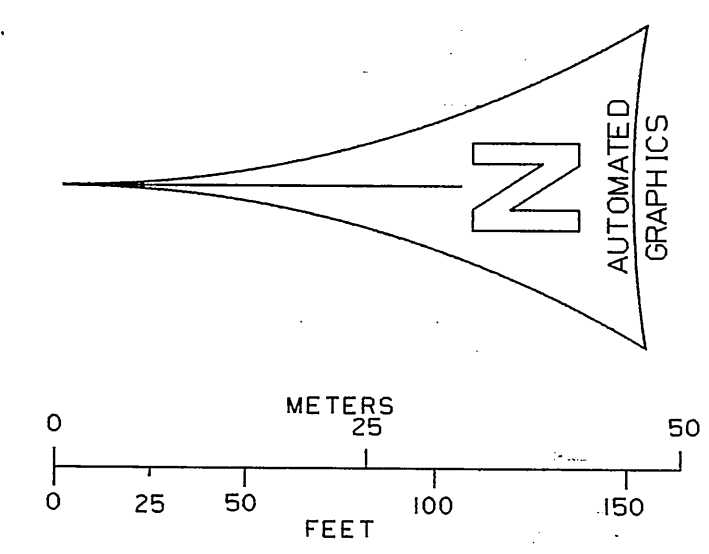


NOTE :
 THIS MAP SUPERCEDES C.S.B-5470. THE FOLLOWING CHANGES HAVE BEEN MADE : THE REFERENCE FOR THE LARGE BOAT SPIKE IN THE INTERSECTION OF GLADSTONE AVE. AND BARRANCA AVE. HAS BEEN CORRECTED FROM F.B.3194-159,1160 TO F.B.3194-159,160. THE MAP BOOK NUMBER FOR TRACT NO. 20928 ON SHEET 2 HAS BEEN CORRECTED FROM M.B. 21 178 - 179 TO M.B. 599 30 - 31.



INDEX MAP NOT TO SCALE

NOTE :
 THIS MAP DELINEATES THE REVISED ALIGNMENT OF BARRANCA AVE. (FORMERLY BEN LOMOND AVE.) ADOPTED BY THE I.E.C. DATED APRIL 27, 1967 AND SUPERSEDES C.S.B-1646 & C.S.B-2933 WITHIN THE LIMITS HEREON.



COUNTY OF LOS ANGELES DEPARTMENT OF PUBLIC WORKS T. A. TIDEMANSON - COUNTY ENGINEER PREPARED BY MAPPING AND PROPERTY MANAGEMENT DIVISION AND SURVEY DIVISION SURVEYED BY - J. H. BROWN CHECKED BY - R. HILARIO DRAWN BY - G. MASUDA	MAP OF BARRANCA AVE. FROM GLADSTONE AVE. TO BASE LINE ROAD BASIS OF BEARINGS CALIFORNIA COORDINATE SYSTEM, ZONE 7	COUNTY SURVEYOR'S MAP NO B-5470A SHEET 2 OF 2 SHEETS FILED: <i>W. J. H.</i> OCT 25, 1968 ASST. DEPUTY DIRECTOR SURVEYED FEB. 1968 REFERENCE F.B. 3194
	JOB NUMBER 0208.11 INDEX MAP NO 1441-317 <small>©1968 B.S. & S. ENGINEERS</small>	