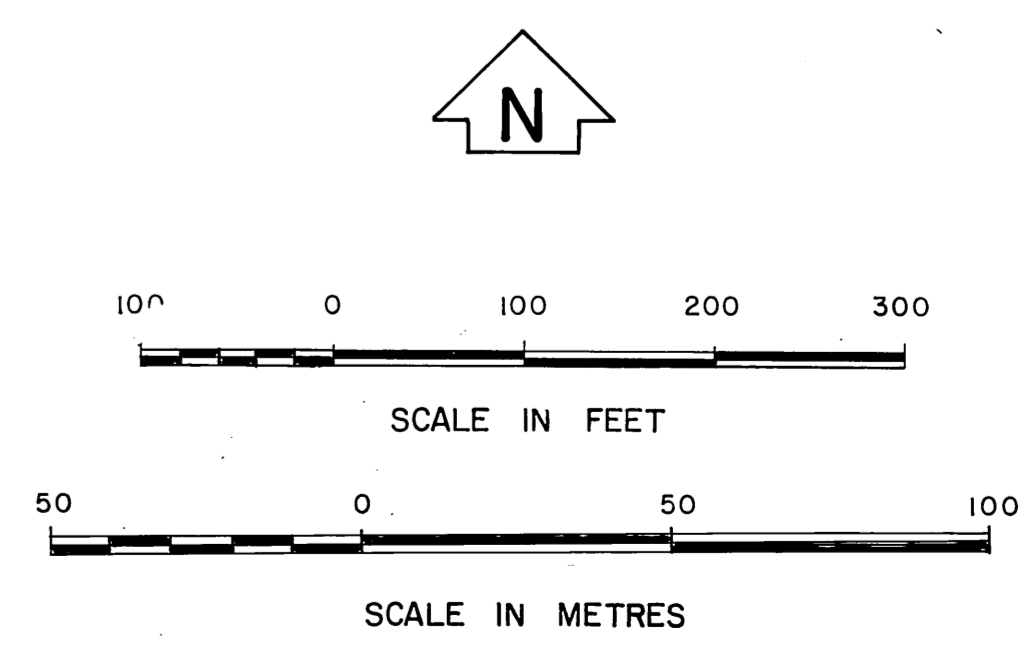
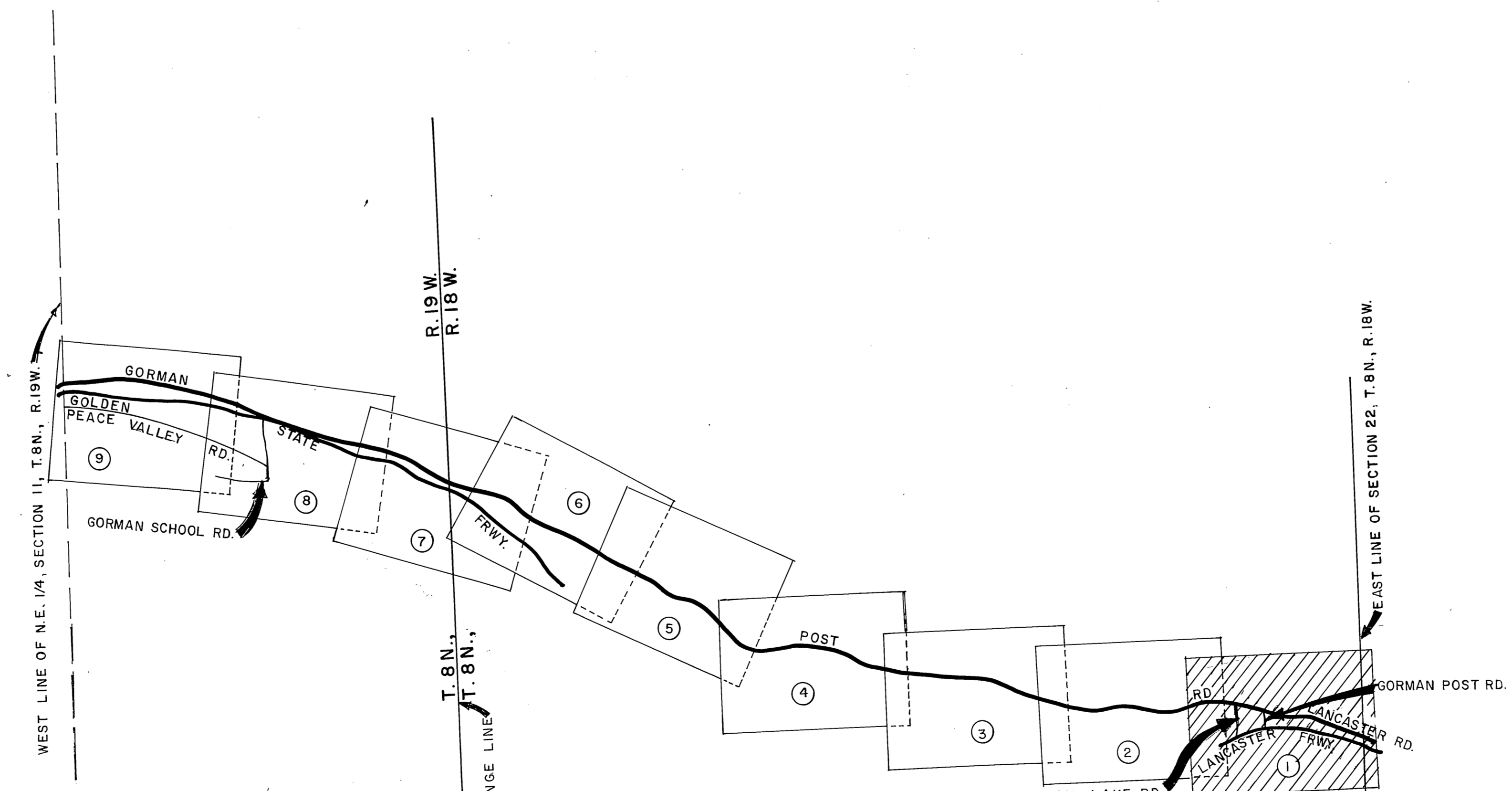


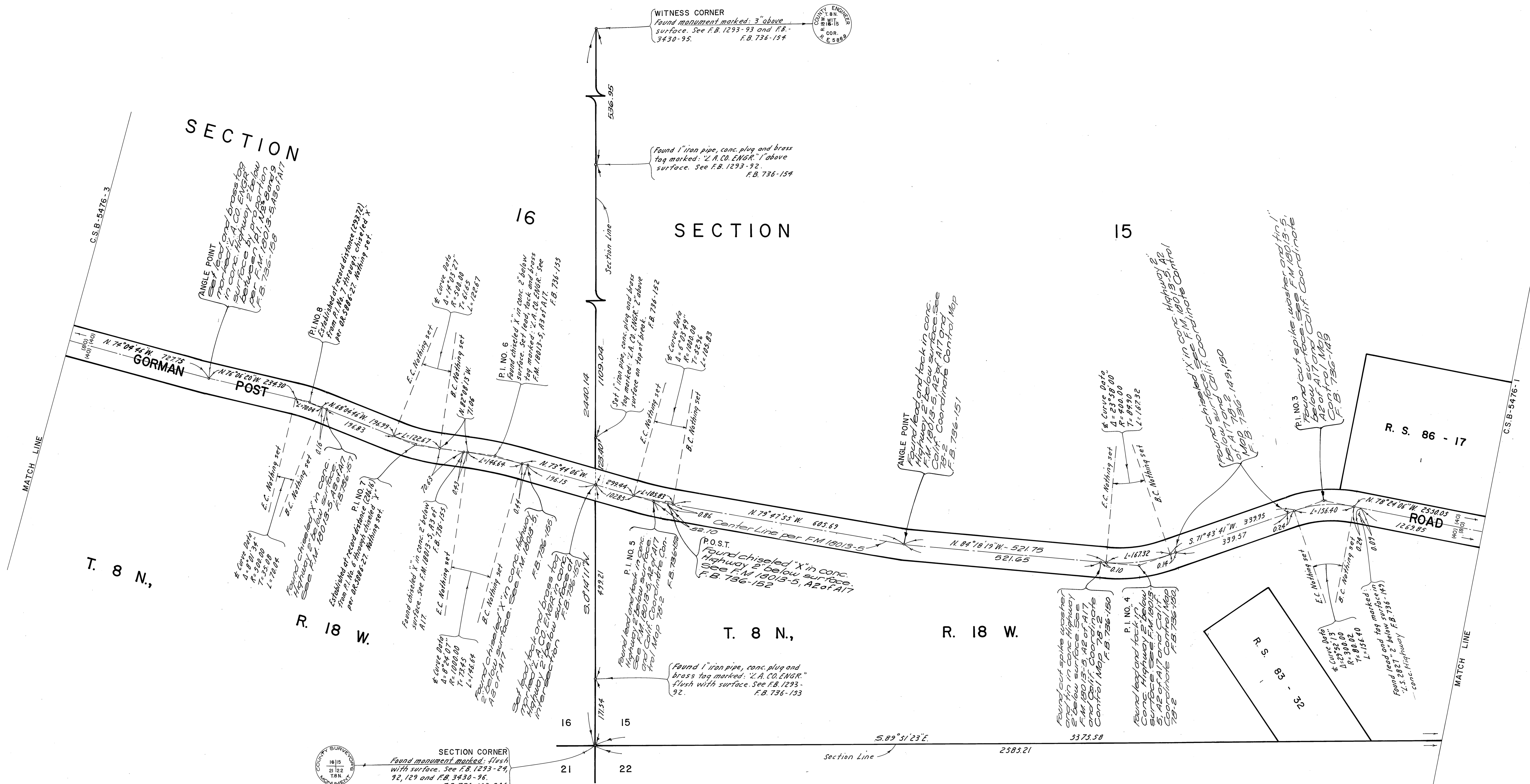
NOTE

THIS MAP SUPERSEDES THE ALIGNMENT OF GORMAN POST ROAD AS SHOWN ON F.M. 18013-5, F.M. 10593 AND F.M. 21061 WITHIN THE LIMITS SHOWN HEREIN. SEE I.E.C. MINUTES DATED FEBRUARY 19, 1970.

ALSO SHOWN IS THE RECLASSIFICATION FROM A MAJOR HIGHWAY TO A SECONDARY HIGHWAY AS SHOWN ON THE LOS ANGELES COUNTY GENERAL PLAN NOVEMBER 1980.

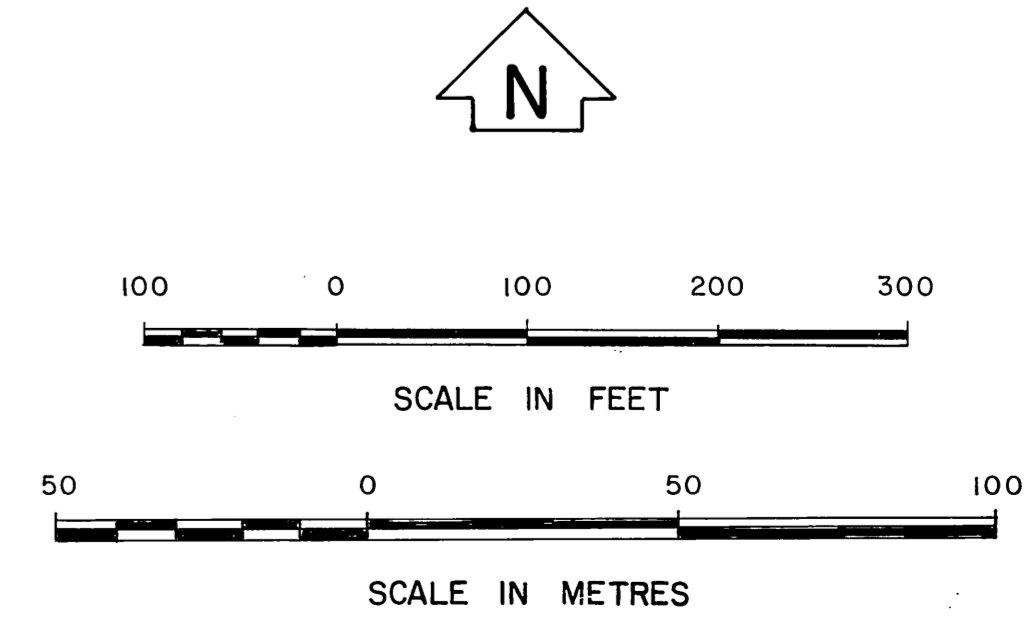
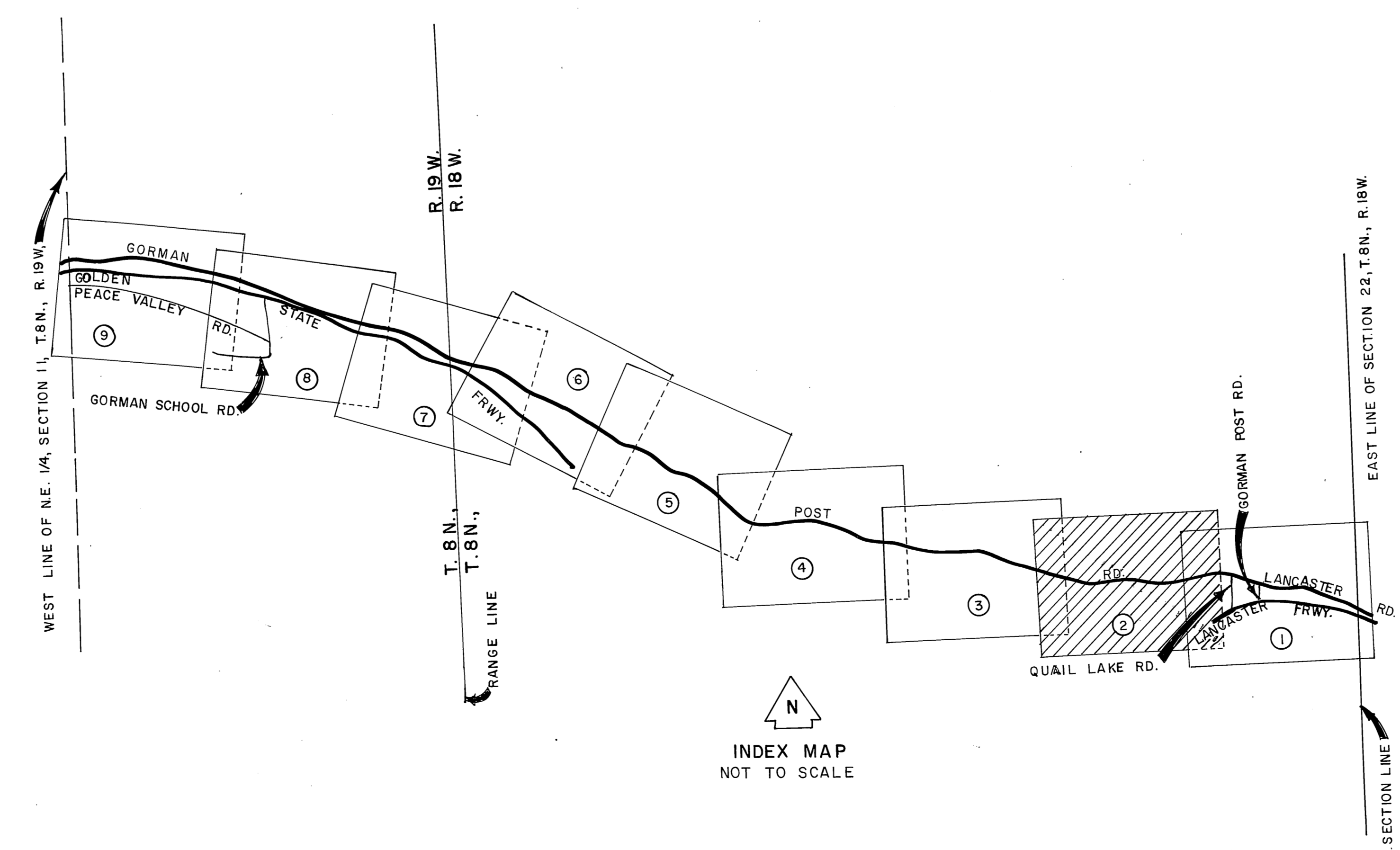


COUNTY OF LOS ANGELES DEPARTMENT OF PUBLIC WORKS T. A. TIDEMANSON - COUNTY ENGINEER PREPARED BY MAPPING DIVISION ARMANDO CID DIVISION ENGINEER SURVEYED BY W. ALBRIGHT CHECKED BY R. HILARIO DRAWN BY B. GOINS - G. MASUDA	ALIGNMENT MAP OF GORMAN POST ROAD FROM EAST LINE OF SECTION 22 T. 8 N., R. 18 W. TO WEST LINE OF N.E. 1/4, SECTION 11, T. 8 N., R. 19 W. BASIS OF BEARINGS CALIFORNIA COORDINATE ZONE 7		COUNTY SURVEYOR'S MAP NO. B-5476 SHEET 1 OF 9 SHEETS FILED: <i>Albright</i> , 1974 DEPUTY SURVEYED MAR. 1974 REFERENCE F.B. 736
	JOB NUMBER 1518-06		INDEX MAP NO. 384-037



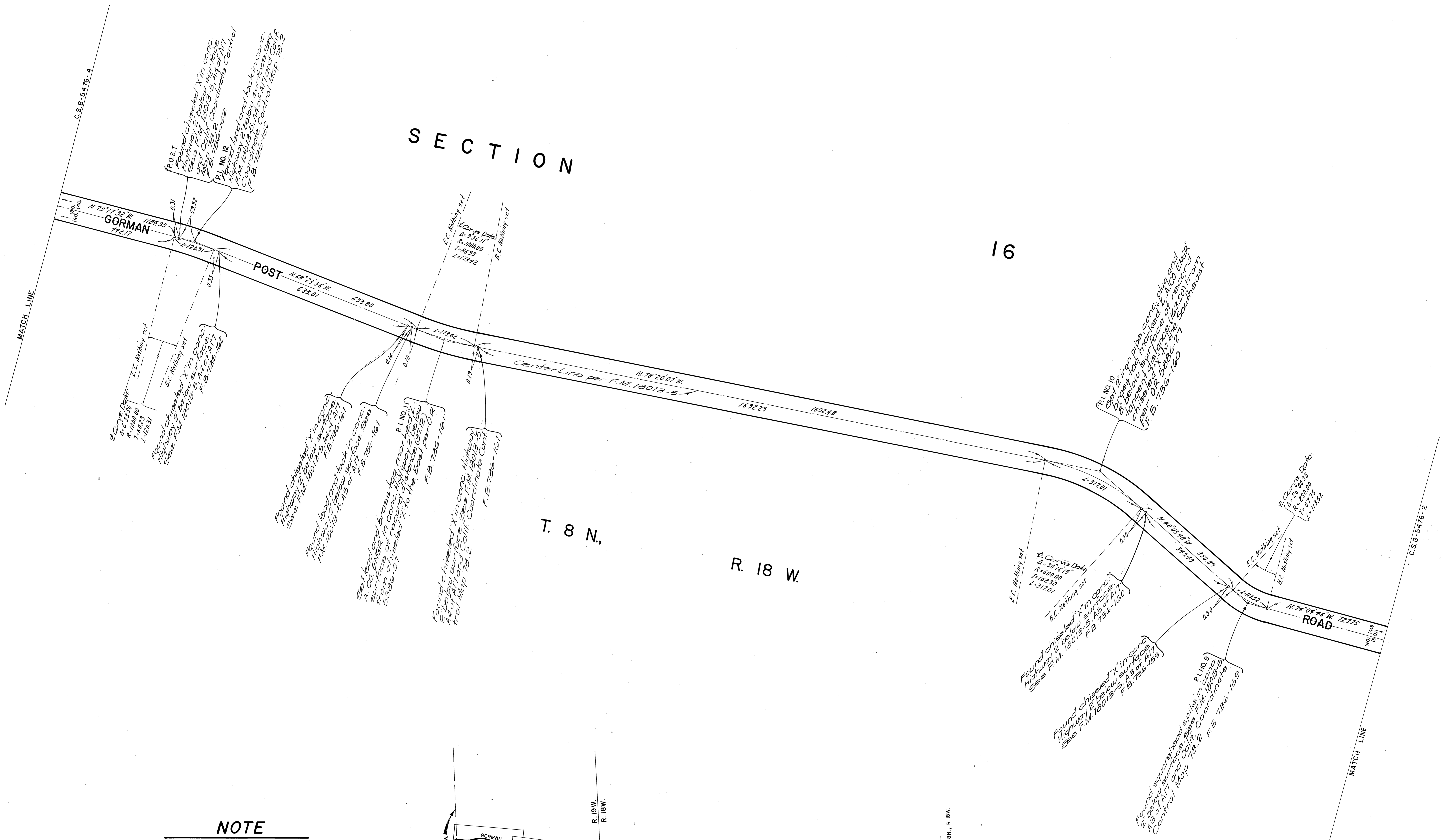
NOTE

THIS MAP SUPERSEDES THE ALIGNMENT OF GORMAN POST ROAD AS SHOWN ON FM 18013-5, FM 10593 AND FM 21061 WITHIN THE LIMITS SHOWN HEREIN. SEE I.E.C. MINUTES DATED FEBRUARY 19, 1970. ALSO SHOWN IS THE RECLASSIFICATION FROM A MAJOR HIGHWAY TO A SECONDARY HIGHWAY AS SHOWN ON THE LOS ANGELES COUNTY GENERAL PLAN NOVEMBER 1980.



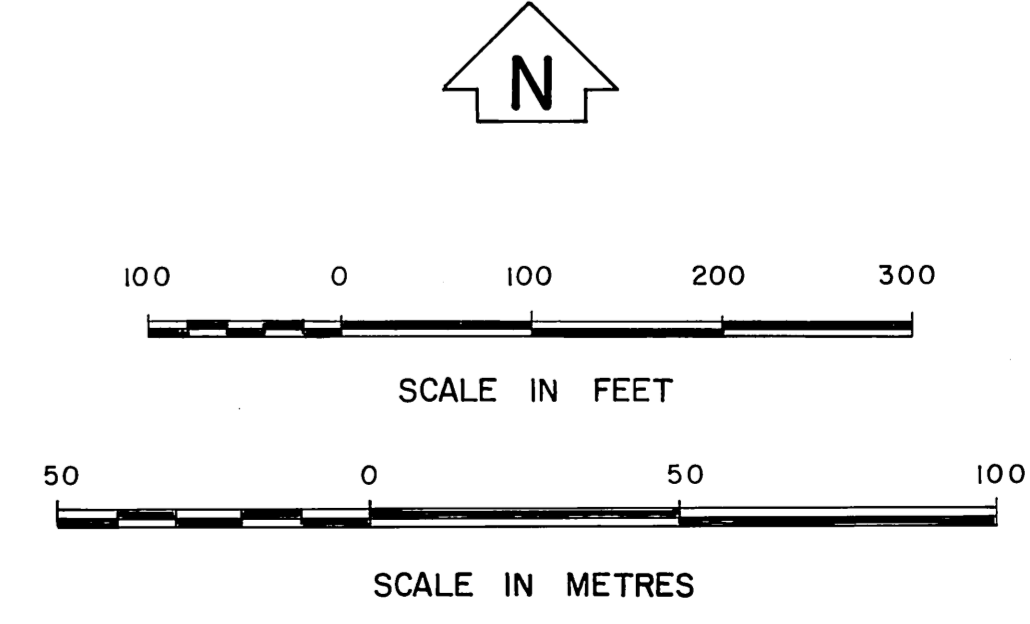
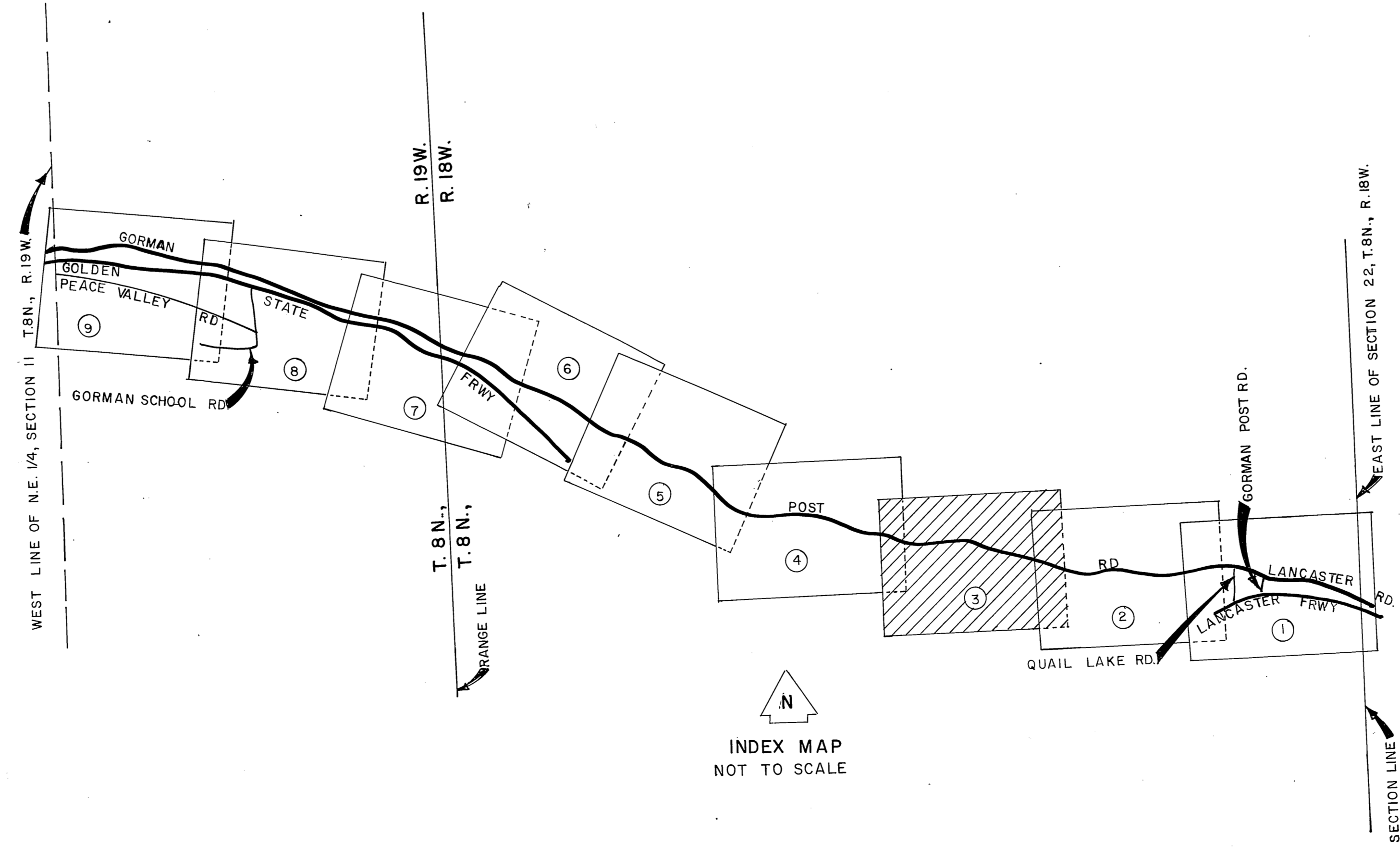
COUNTY OF LOS ANGELES DEPARTMENT OF PUBLIC WORKS PREPARED BY MAPPING DIVISION ARMANDO CID DIVISION ENGINEER SURVEYED BY W. ALBREIGHT CHECKED BY R. MILARIO DRAWN BY G. GOINS - G. MASUDA	ALIGNMENT MAP OF GORMAN POST ROAD FROM EAST LINE OF SECTION 22, T. 8 N., R. 18 W. TO WEST LINE OF NE. 1/4, SECTION 11, T. 8 N., R. 19 W. BASIS OF BEARINGS CALIFORNIA COORDINATE SYSTEM, ZONE 7.		COUNTY SURVEYOR'S MAP NO. B-5476 SHEET 2 OF 9 SHEETS FILED: <i>6/11/74</i> DEPUTY SURVEYOR <i>Armando Cid</i> M.A.R. 1974 REFERENCE F.B. 736 JOB NUMBER 1518.06
			INDEX MAP NO. 384-037

C 2 B 2 4 7 6 2

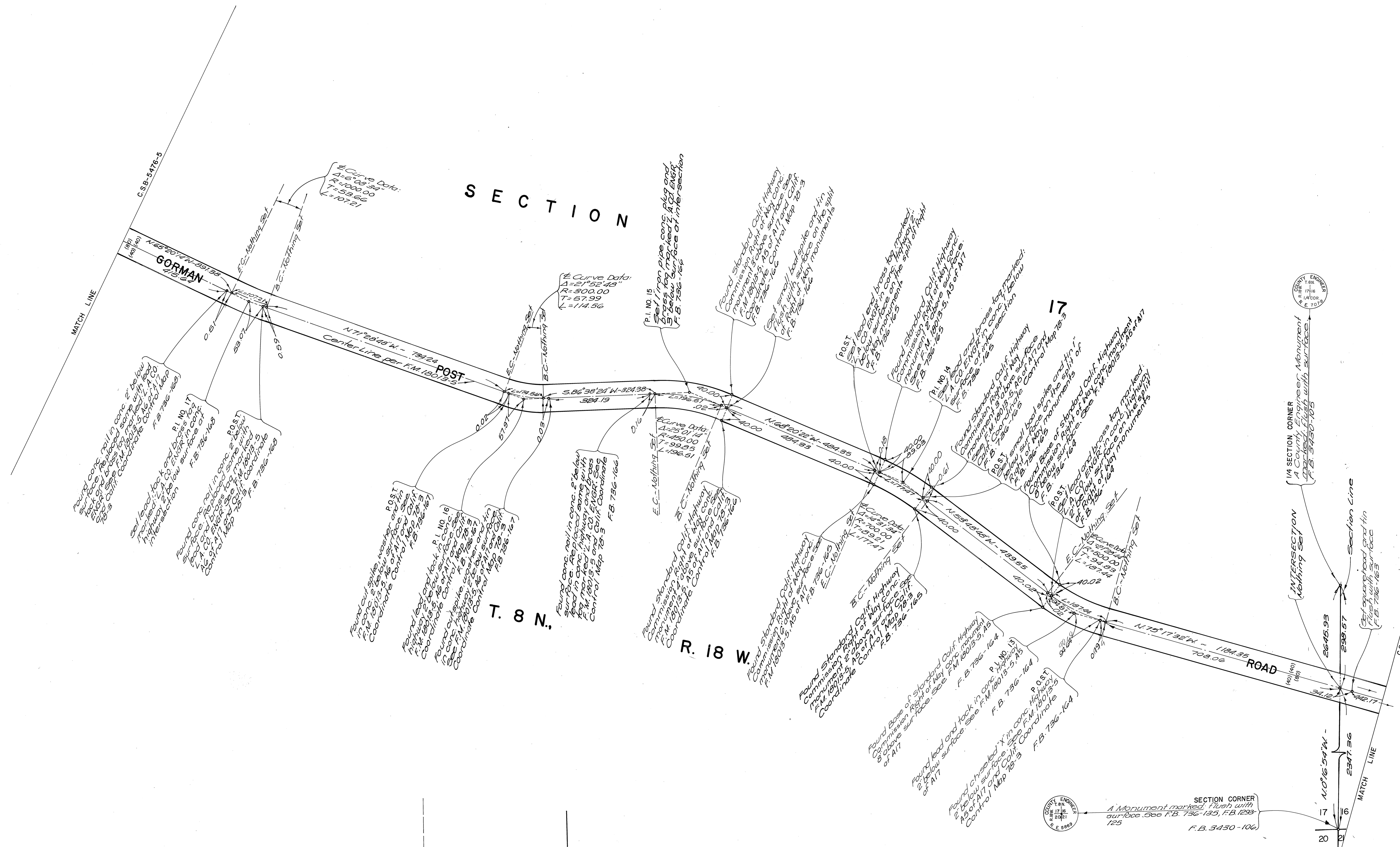


NOTE

THIS MAP SUPERSEDES THE ALIGNMENT OF GORMAN POST ROAD AS SHOWN ON FM 18013-5, FM 10593 AND FM 21061 WITHIN THE LIMITS SHOWN HEREIN. SEE I.E.C. MINUTES DATED FEBRUARY 19, 1970. ALSO SHOWN IS THE RECLASSIFICATION FROM A MAJOR HIGHWAY TO A SECONDARY HIGHWAY AS SHOWN ON THE LOS ANGELES COUNTY GENERAL PLAN NOVEMBER 1980.



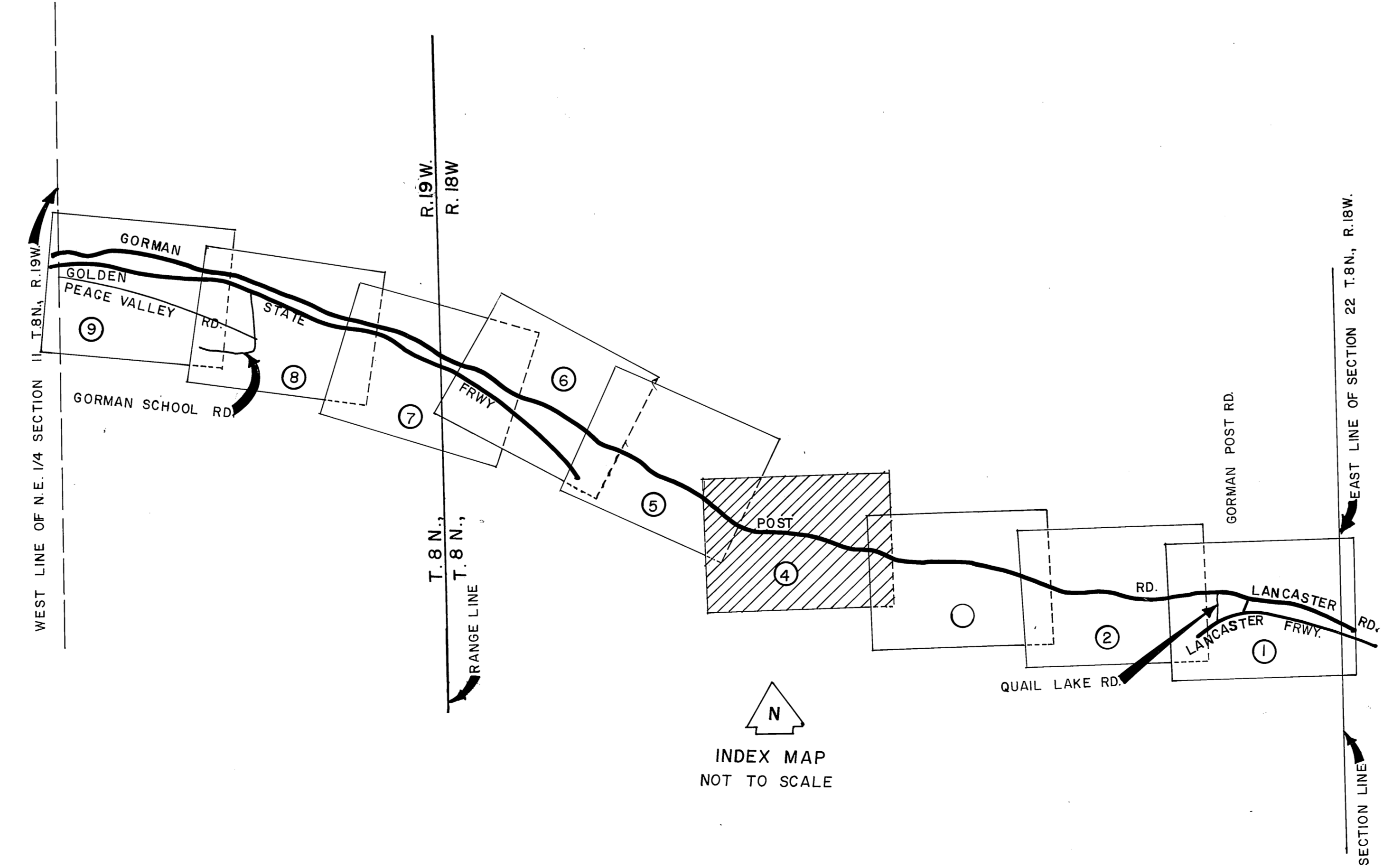
COUNTY OF LOS ANGELES DEPARTMENT OF PUBLIC WORKS T. A. TIDEMANSON - COUNTY ENGINEER PREPARED BY MAPPING DIVISION ARMANDO CID DIVISION ENGINEER SURVEYED BY W. ALBRIGHT CHECKED BY R. BILARJO DRAWN BY B. GOINS-G. MASUDA	ALIGNMENT MAP OF GORMAN POST ROAD FROM EAST LINE OF SECTION 22, T. 8 N., R. 18 W. TO WEST LINE OF NE 1/4, SECTION 11, T. 8 N., R. 19 W. BASIS OF BEARINGS	COUNTY SURVEYOR'S MAP NO. B-5476 SHEET 3 OF 9 SHEETS FILED: <i>[Signature]</i> 19 8 74 DEPUTY SURVEYED M.A.R. 1974 REFERENCE F.B. 736 JOB NUMBER 1518.06 INDEX MAP NO. 384-037
	CALIFORNIA COORDINATE SYSTEM, ZONE 7	



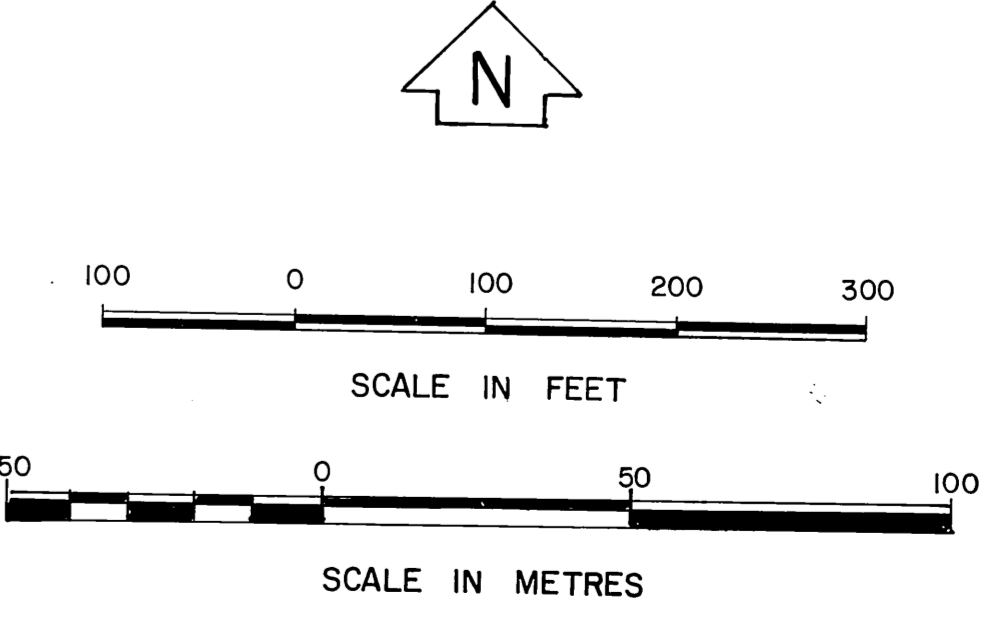
NOTE

THIS MAP SUPERSEDES THE ALIGNMENT OF GORMAN POST ROAD AS SHOWN ON F.M 18013-5, F.M 10593 AND F.M 21061 WITHIN THE LIMITS SHOWN HEREIN. SEE I.E.C. MINUTES DATED FEBRUARY 19, 1970.

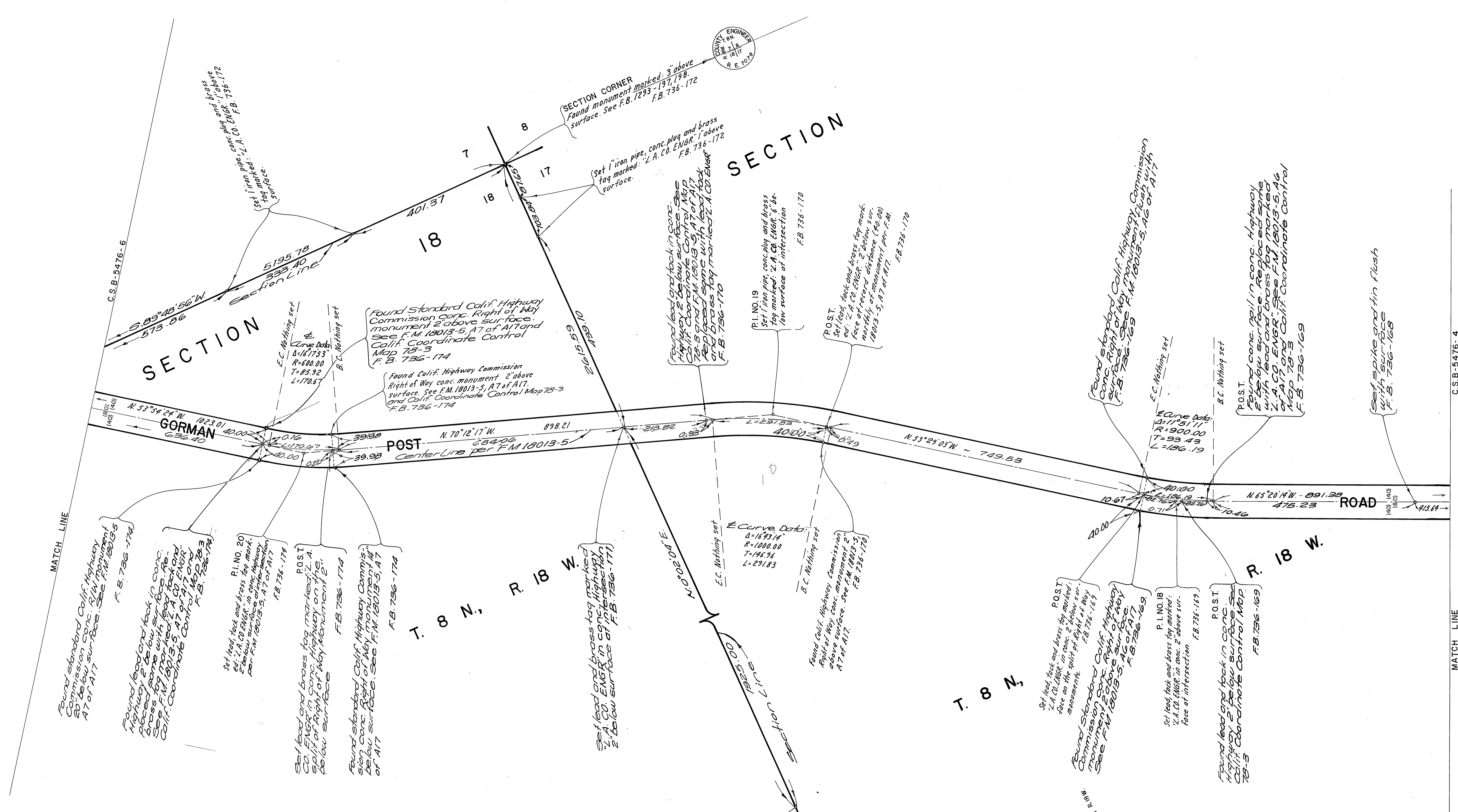
ALSO SHOWN IS THE RECLASSIFICATION FROM A MAJOR HIGHWAY TO A SECONDARY HIGHWAY AS SHOWN ON THE LOS ANGELES COUNTY GENERAL PLAN NOVEMBER 1980.



SECTION CORNER
A Monument marked flush with surface See F.B. 736-125, F.B. 1253-129
F.B. 3430-106



COUNTY OF LOS ANGELES DEPARTMENT OF PUBLIC WORKS T. A. TIDEMANSON - COUNTY ENGINEER PREPARED BY MAPPING DIVISION ARMANDO CID DIVISION ENGINEER SURVEYED BY W. ALBRIGHT CHECKED BY R. HILARIO DRAWN BY B. GOINS - S. MASUDA	ALIGNMENT MAP OF GORMAN POST ROAD FROM EAST LINE OF SECTION 22, T.8N., R.18W. TO WEST LINE OF NE 1/4 SECTION 11, T.8N., R.19W. BASIS OF BEARINGS		COUNTY SURVEYOR'S MAP NO. B-5476 SHEET 4 OF 9 SHEETS FILED: 6/11/74 DEPUTY SURVEYED MAR. 1974 REFERENCE F.B. 736	
	CALIFORNIA COORDINATE SYSTEM, ZONE 7		JOB NUMBER 1518.06 INDEX MAP NO. 384-037	
	COUNTY ENGINEER T. A. TIDEMANSON F.B. 5430-105			SECTION CORNER Monument marked flush with surface F.B. 3430-106
	MATCH LINE INTERSECTION MATCH LINE			MATCH LINE MATCH LINE

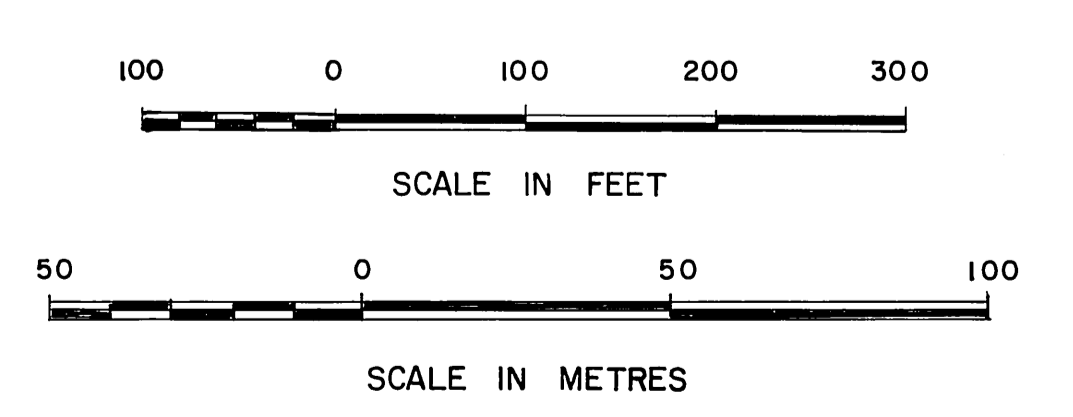


17

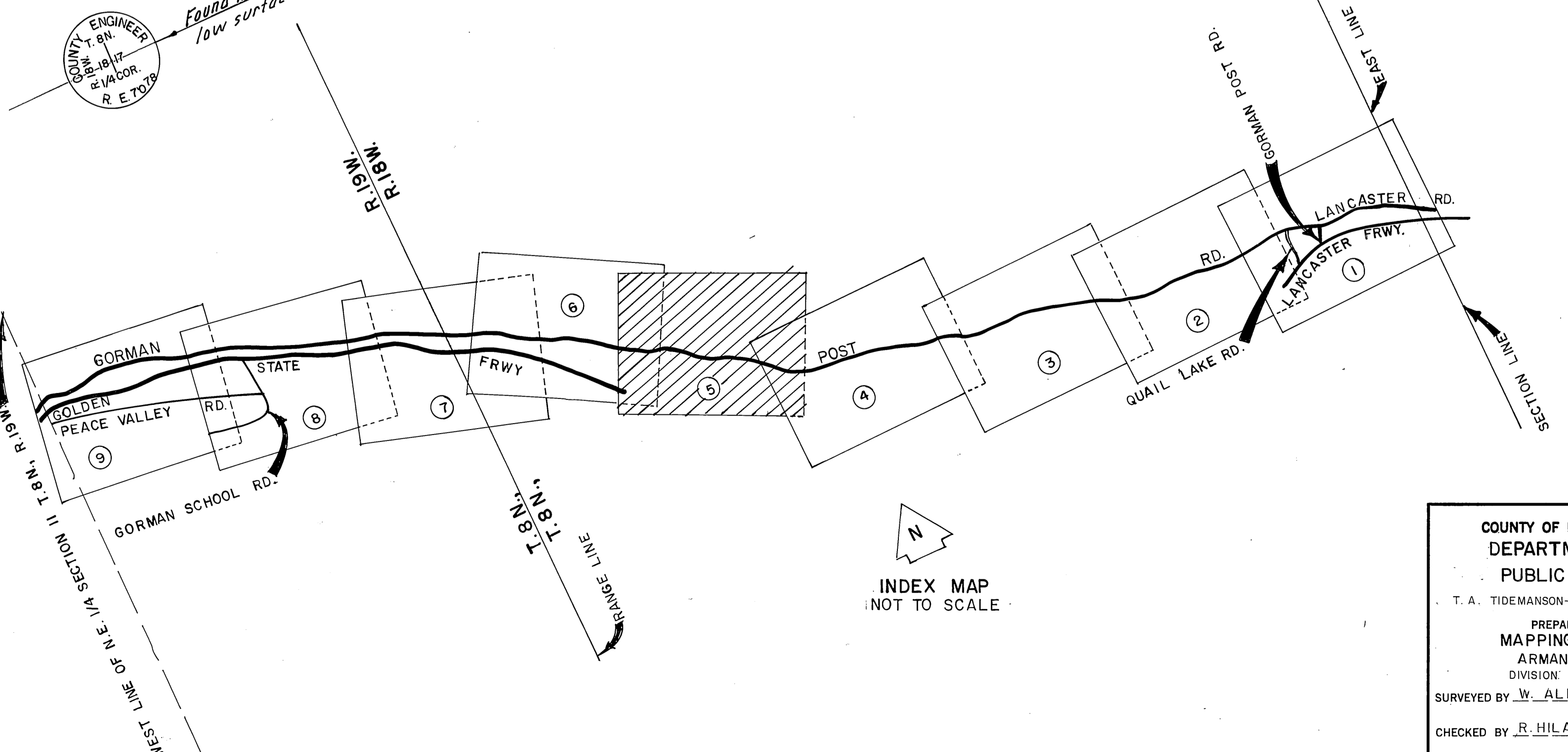
NOTE

THIS MAP SUPERSEDES THE ALIGNMENT OF GORMAN POST ROAD AS SHOWN ON FM 18013-5, FM 10593 AND FM 21061 WITHIN THE LIMITS SHOWN HEREIN. SEE I.E.C. MINUTES DATED FEBRUARY 19, 1970.

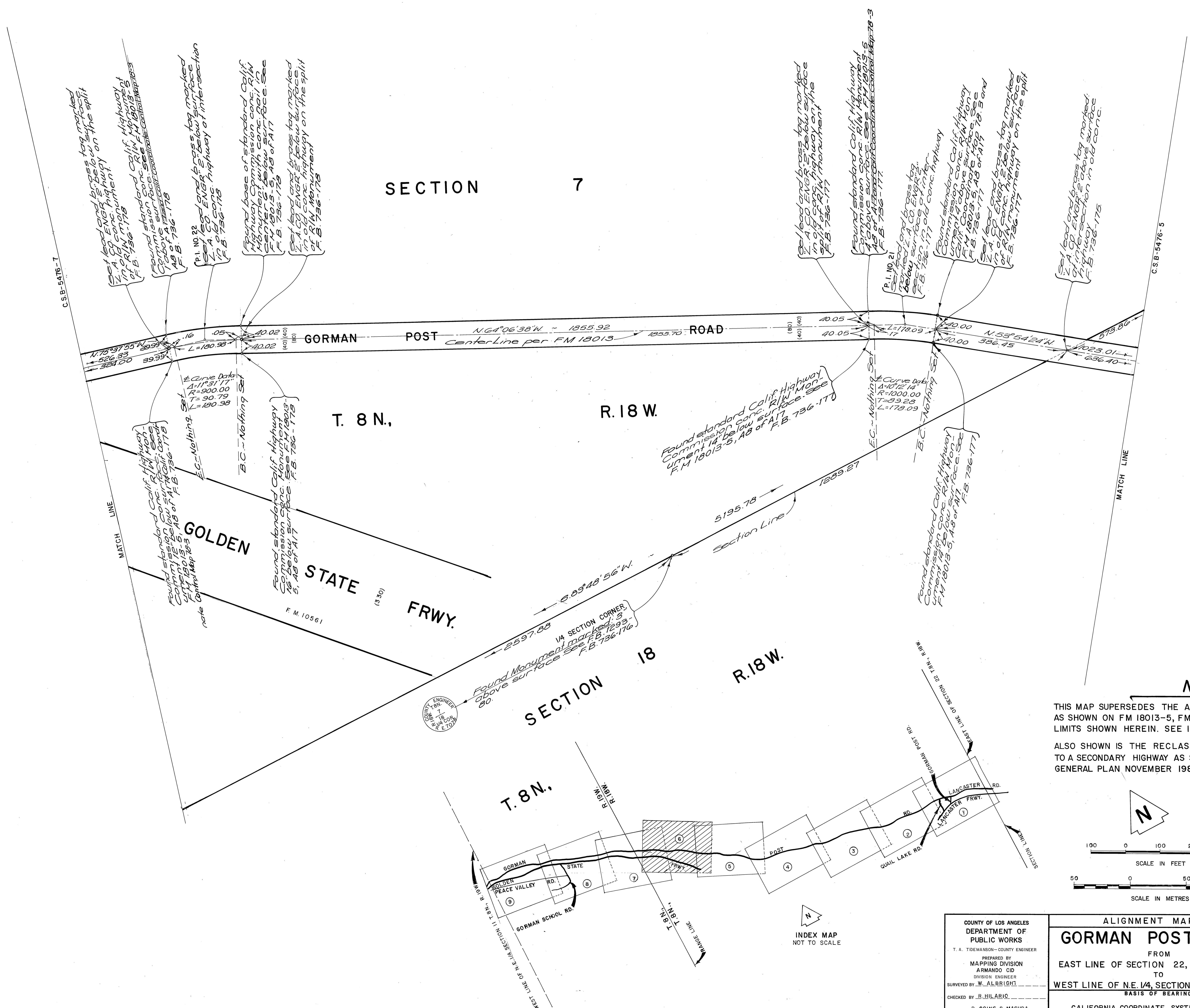
ALSO SHOWN IS THE RECLASSIFICATION FROM A MAJOR HIGHWAY TO A SECONDARY HIGHWAY AS SHOWN ON THE LOS ANGELES COUNTY GENERAL PLAN NOVEMBER 1980.



1/4 SECTION CORNER
Found monument marked 12 b.c.
low surface. See F.B. 736-173



COUNTY OF LOS ANGELES DEPARTMENT OF PUBLIC WORKS T. A. TIDEMANSON - COUNTY ENGINEER PREPARED BY MAPPING DIVISION ARMANDO CUI DIVISION ENGINEER SURVEYED BY W. ALBRIGHT CHECKED BY R. HILARIO DRAWN BY B. GOINS - G. MASUDA	ALIGNMENT MAP OF GORMAN POST ROAD FROM EAST LINE OF SECTION 22, T.8N., R.18W. TO WEST LINE OF N.E. 1/4, SECTION 11, T.8N., R.19W. <small>BASIS OF BEARINGS</small>		COUNTY SURVEYOR'S MAP NO. B-5476 SHEET 5 OF 9 SHEETS FILED: <i>[Signature]</i> , 19 <i>[Signature]</i> DEPUTY SURVEYED MAR. 1974 REFERENCE F.B. 736
	CALIFORNIA COORDINATE SYSTEM, ZONE 7		
	JOB NUMBER 1518.06		INDEX MAP NO. 384-037
	COUNTY ENGINEER T. A. TIDEMANSON COUNTY ENGINEER		



SECTION 7

T. 8 N.

R. 18 W.

GOLDEN STATE FRWY.

SECTION 18

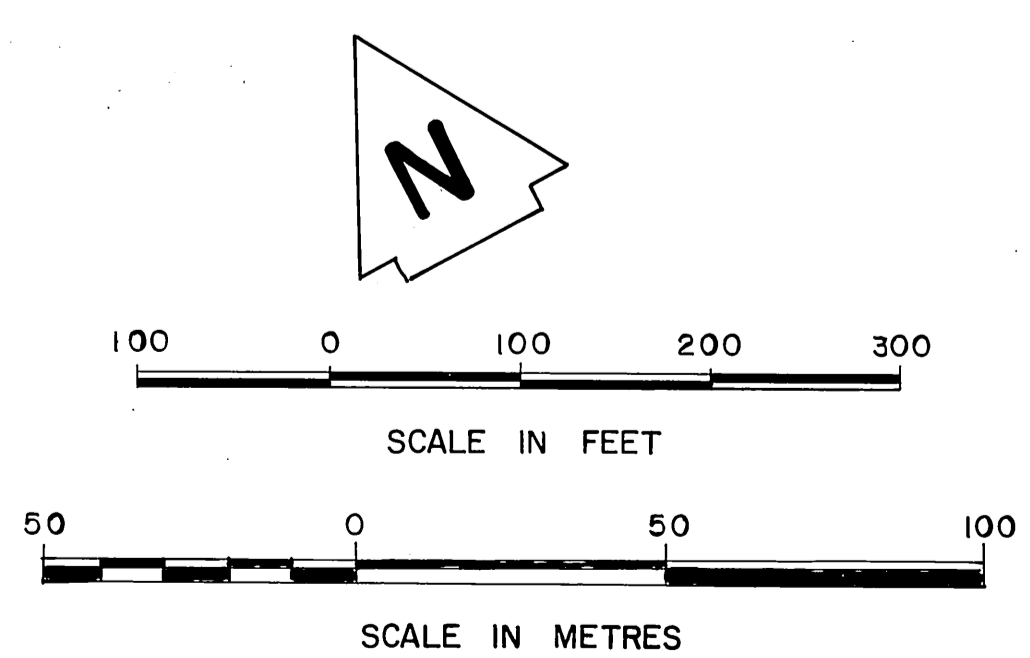
T. 8 N.

R. 18 W.

NOTE

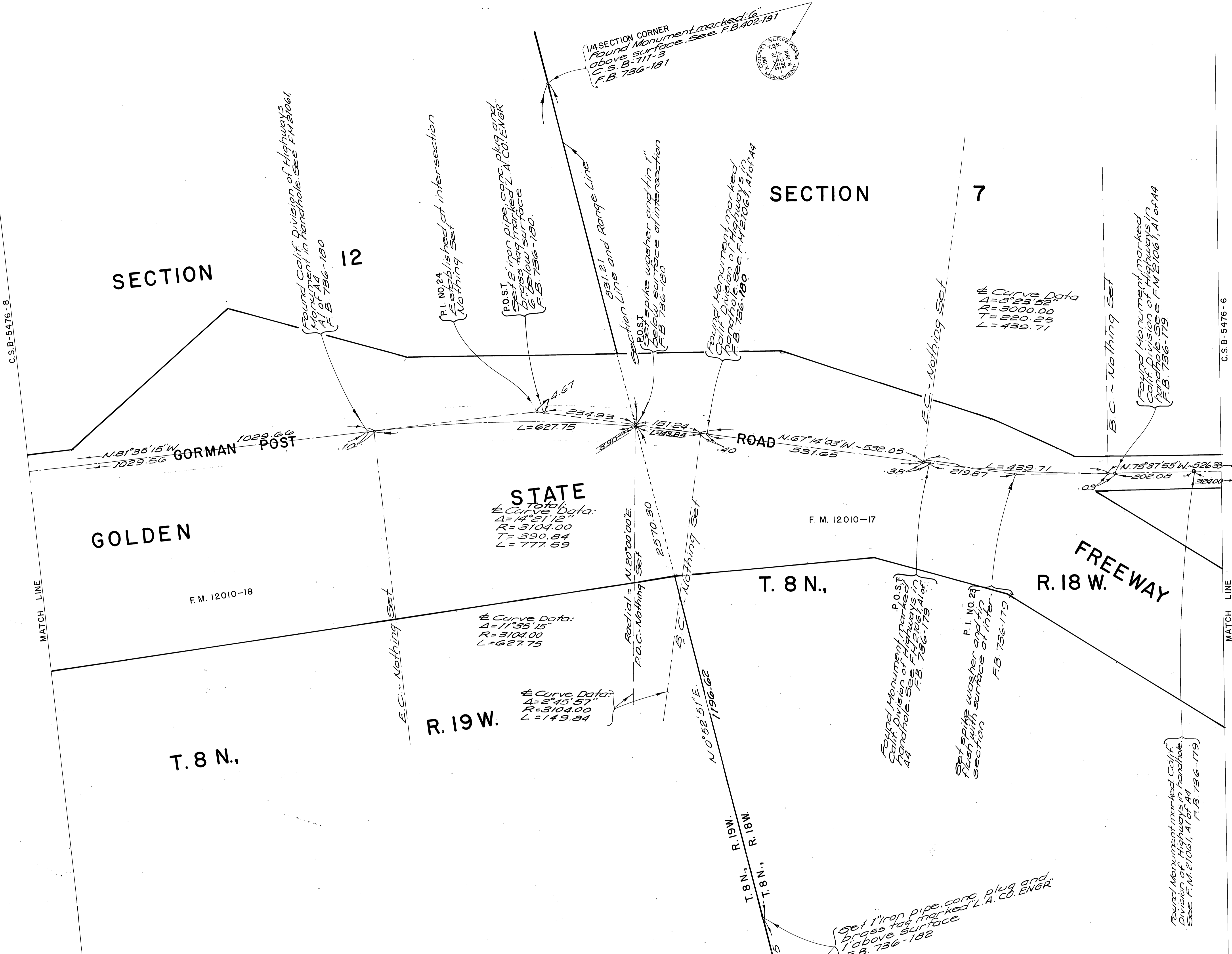
THIS MAP SUPERSEDES THE ALIGNMENT OF GORMAN POST ROAD AS SHOWN ON FM 18013-5, FM 10593 AND FM 21061 WITHIN THE LIMITS SHOWN HEREIN. SEE I.E.C. MINUTES DATED FEBRUARY 19, 1970.

ALSO SHOWN IS THE RECLASSIFICATION FROM A MAJOR HIGHWAY TO A SECONDARY HIGHWAY AS SHOWN ON THE LOS ANGELES COUNTY GENERAL PLAN NOVEMBER 1980.



COUNTY OF LOS ANGELES DEPARTMENT OF PUBLIC WORKS T. A. TIDEMANSON—COUNTY ENGINEER PREPARED BY MAPPING DIVISION ARMANDO CID DIVISION ENGINEER SURVEYED BY W. ALBRIGHT CHECKED BY B. HILARIO DRAWN BY B. GOINS-S. MASUDA	ALIGNMENT MAP OF GORMAN POST ROAD		B-5476 SHEET 6 OF 9 SHEETS FILED: <i>all</i> DEPT. SURVEYED MAR. 1974 REFERENCE F.B. 736
	FROM EAST LINE OF SECTION 22, T. 8 N., R. 18 W. TO WEST LINE OF N.E. 1/4, SECTION 11, T. 8 N., R. 19 W.		
	BASIS OF BEARINGS CALIFORNIA COORDINATE SYSTEM, ZONE 7.		
	JOB NUMBER 1518.06 INDEX MAP NO. 384-037		

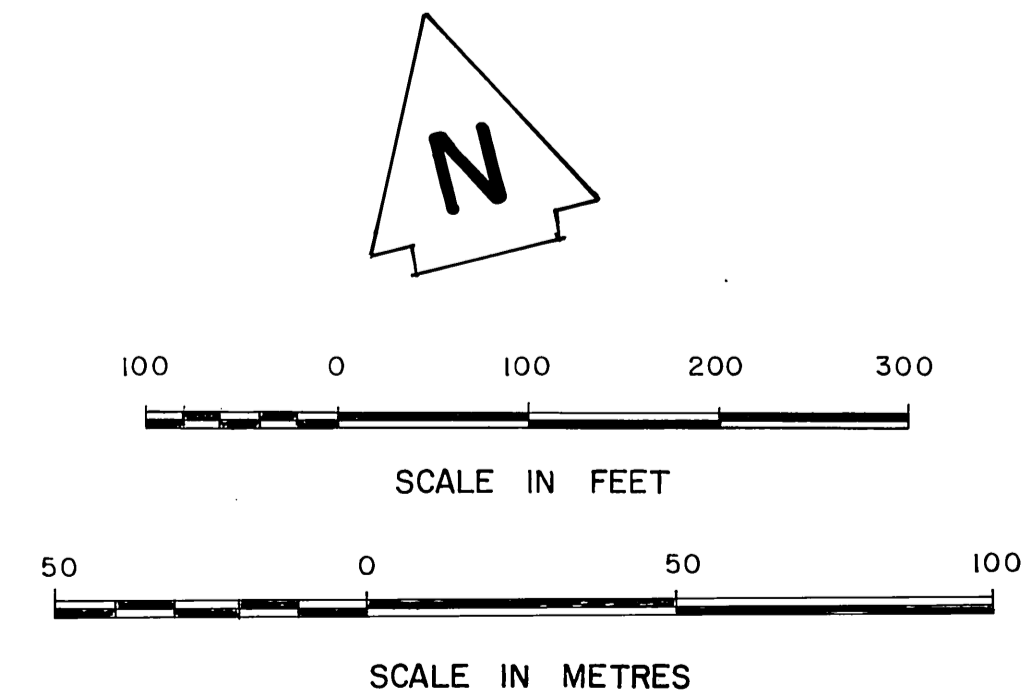
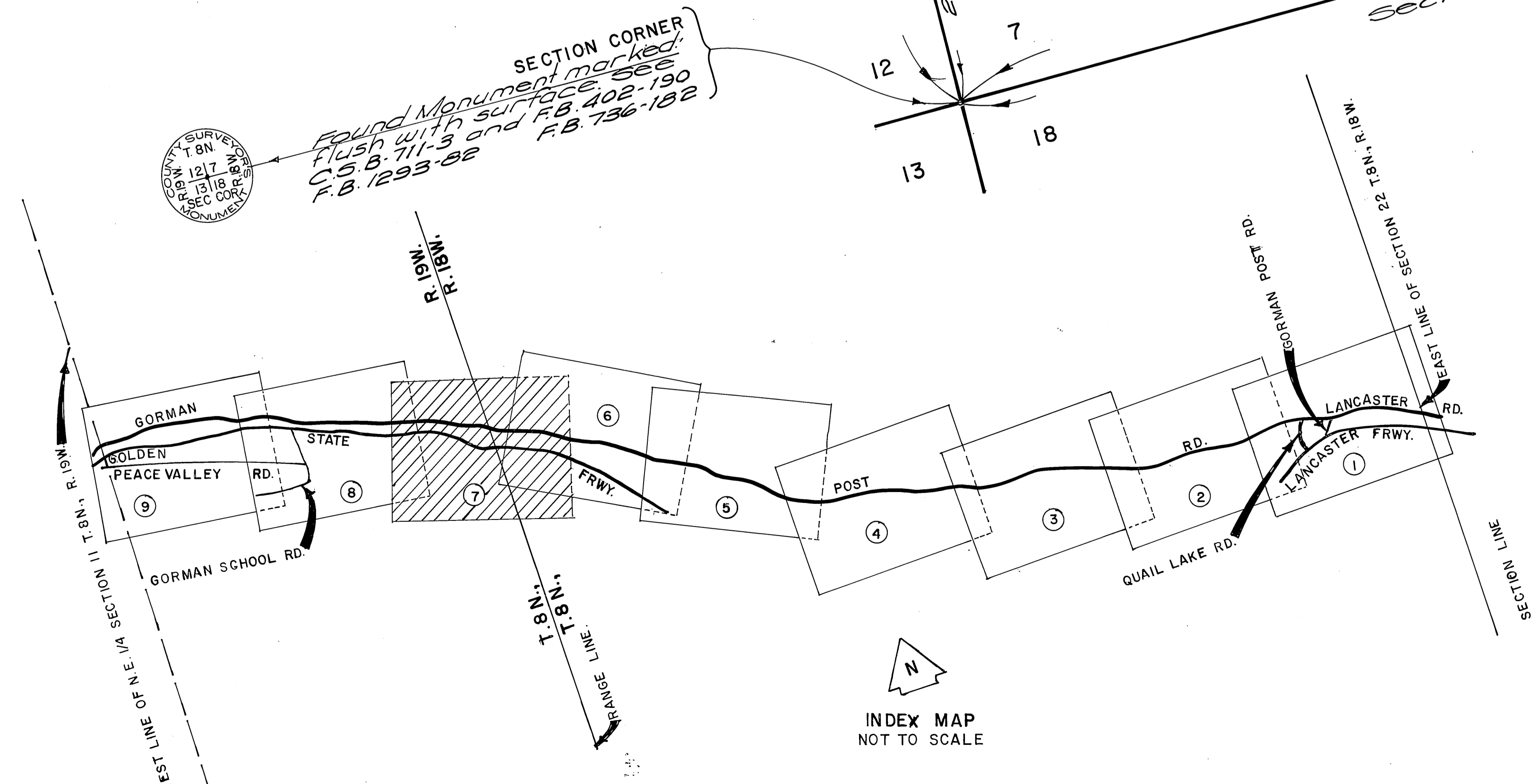
T-9742-22.C



NOTE

THIS MAP SUPERSEDES THE ALIGNMENT OF GORMAN POST ROAD AS SHOWN ON FM 18013-5, FM 10593 AND FM 21061 WITHIN THE LIMITS SHOWN HEREIN. SEE I.E.C. MINUTES DATED FEBRUARY 19, 1970.

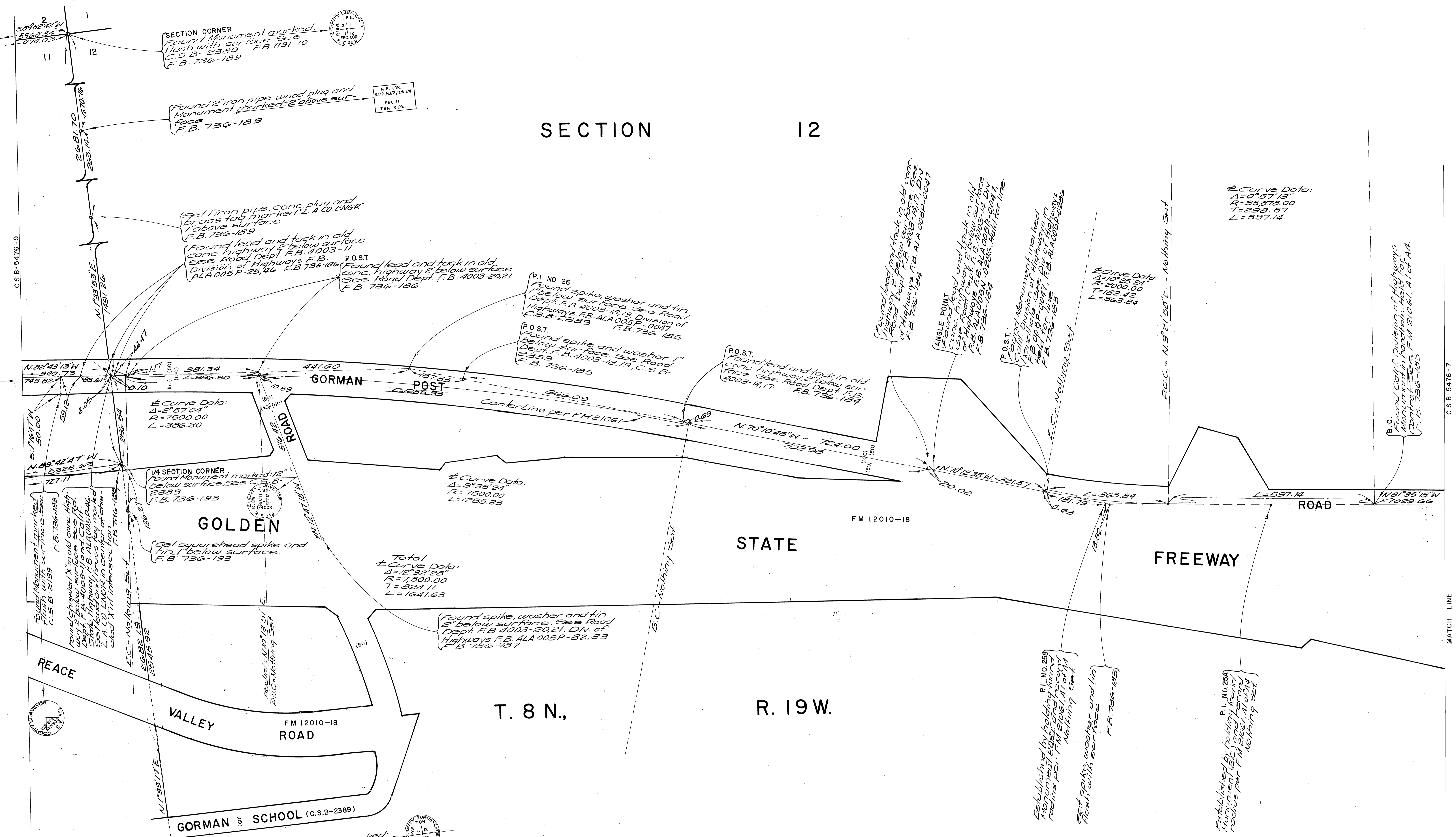
ALSO SHOWN IS THE RECLASSIFICATION FROM A MAJOR HIGHWAY TO A SECONDARY HIGHWAY AS SHOWN ON THE LOS ANGELES COUNTY GENERAL PLAN NOVEMBER 1980.



COUNTY OF LOS ANGELES DEPARTMENT OF PUBLIC WORKS T. A. TIDEMANSON - COUNTY ENGINEER PREPARED BY MAPPING DIVISION ARMANDO CID DIVISION ENGINEER SURVEYED BY W. A. L. BRIGHT CHECKED BY R. HILARIO DRAWN BY B. GOINS - G. MASUDA	ALIGNMENT MAP OF GORMAN POST ROAD FROM EAST LINE OF SECTION 22, T. 8 N., R. 18 W. TO WEST LINE OF NE 1/4, SECTION 11, T. 8 N., R. 19 W. <small>BASIS OF BEARINGS</small>		COUNTY SURVEYOR'S MAP NO. B-5476 SHEET 7 OF 9 SHEETS FILED: <i>[Signature]</i> 1980 DEPUTY SURVEYOR M.A.R. 1974 REFERENCE F.B. 736
	CALIFORNIA COORDINATE SYSTEM, ZONE 7.		JOB NUMBER 1518-06. INDEX MAP NO. 384-037

8-2143-B.2.C

SECTION 12



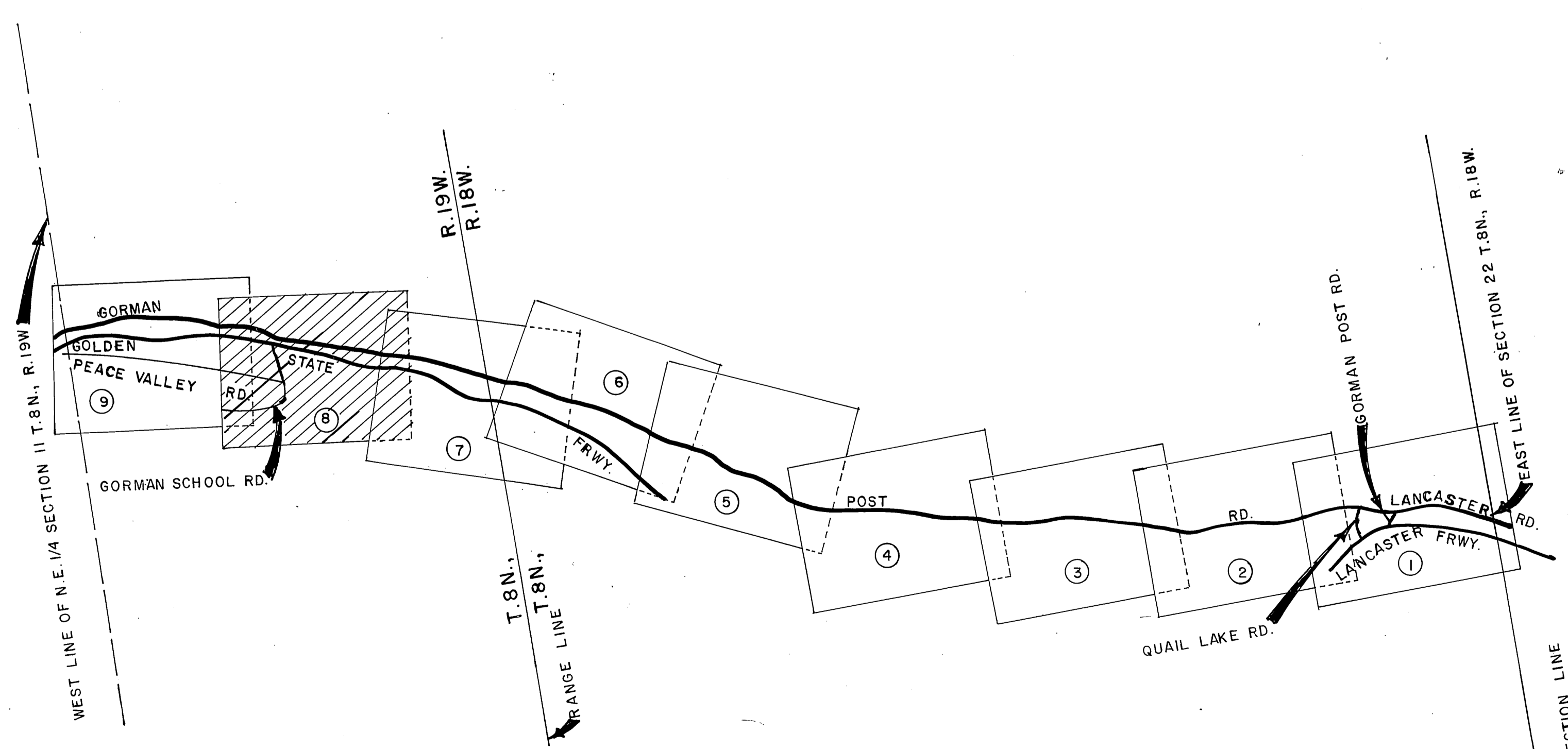
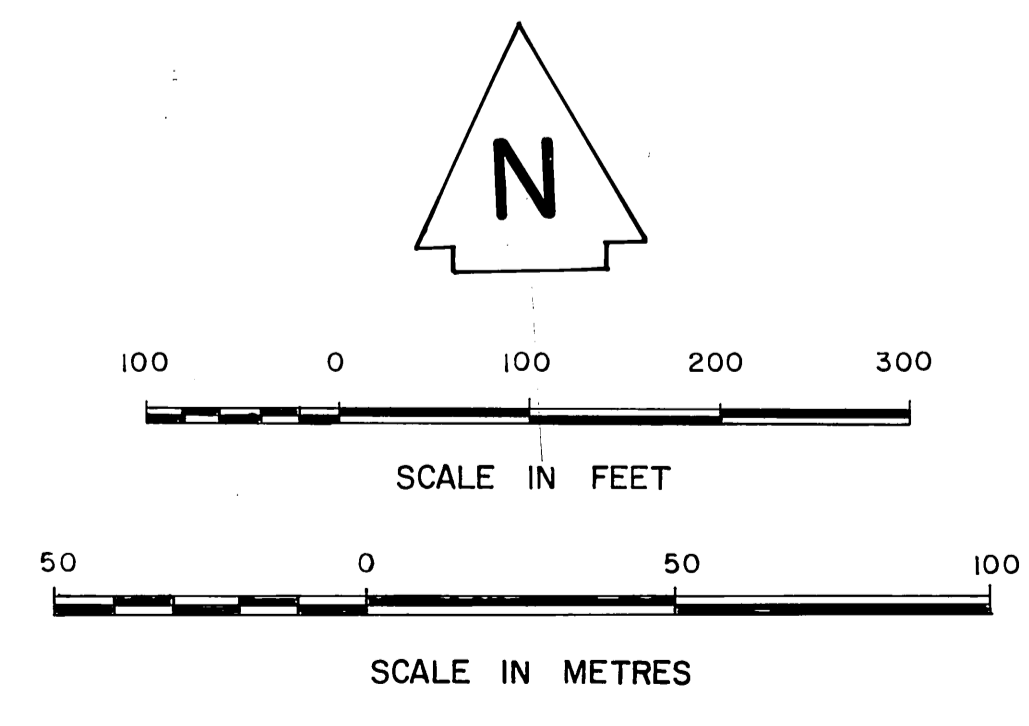
Curve Data:
 A=0°57'13"
 R=35,978.00
 T=299.67
 L=597.14

Curve Data:
 A=9°56'24"
 R=7500.00
 T=324.11
 L=1641.63

Total
 Curve Data:
 A=12°32'25"
 R=7500.00
 T=324.11
 L=1641.63

NOTE

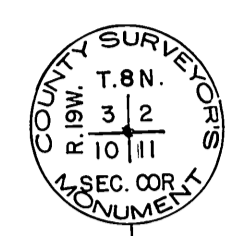
THIS MAP SUPERSEDES THE ALIGNMENT OF GORMAN POST ROAD AS SHOWN ON FM 18013-5, FM 10593 AND FM 21061 WITHIN THE LIMITS SHOWN HEREIN. SEE I.E.C. MINUTES DATED FEBRUARY 19, 1970.
 ALSO SHOWN IS THE RECLASSIFICATION FROM A MAJOR HIGHWAY TO A SECONDARY HIGHWAY AS SHOWN ON THE LOS ANGELES COUNTY GENERAL PLAN NOVEMBER 1980.



COUNTY OF LOS ANGELES DEPARTMENT OF PUBLIC WORKS T. A. TIDEMANSON - COUNTY ENGINEER PREPARED BY MAPPING DIVISION ARMANDO CID DIVISION ENGINEER SURVEYED BY W. AL BRIGHT CHECKED BY R. HILARIO DRAWN BY G. MASUDA	ALIGNMENT MAP OF GORMAN POST ROAD FROM EAST LINE OF SECTION 22, T.8N., R.18W. TO WEST LINE OF N.E. 1/4, SECTION 11, T.8N., R.19W. BASIS OF BEARINGS	COUNTY SURVEYOR'S MAP NO. B-5476 SHEET 8 OF 9 SHEETS FILED: <i>[Signature]</i> 18 28 DEPUTY SURVEYED MAR. 1974 REFERENCE F.B. 736
	CALIFORNIA COORDINATE SYSTEM, ZONE 7	
	JOB NUMBER 1518, 0 6	
	INDEX MAP NO. 384-037	

MATCH LINE

INDEX MAP NOT TO SCALE



SECTION CORNER
Found Monument marked
12' below surface. See
F.B. 1191-119, C.S.B.-2199
F.B. 736-199

SECTION CORNER
Found Monument marked
12' below surface. See
F.B. 1191-119, C.S.B.-2199
F.B. 736-199

SECTION CORNER
Found Monument marked
12' below surface. See
F.B. 1191-119, C.S.B.-2199
F.B. 736-199

SECTION CORNER
Found Monument marked
12' below surface. See
F.B. 1191-119, C.S.B.-2199
F.B. 736-199

SECTION CORNER
Found Monument marked
12' below surface. See
F.B. 1191-119, C.S.B.-2199
F.B. 736-199

SECTION CORNER
Found Monument marked
12' below surface. See
F.B. 1191-119, C.S.B.-2199
F.B. 736-199

SECTION CORNER
Found Monument marked
12' below surface. See
F.B. 1191-119, C.S.B.-2199
F.B. 736-199

SECTION CORNER
Found Monument marked
12' below surface. See
F.B. 1191-119, C.S.B.-2199
F.B. 736-199

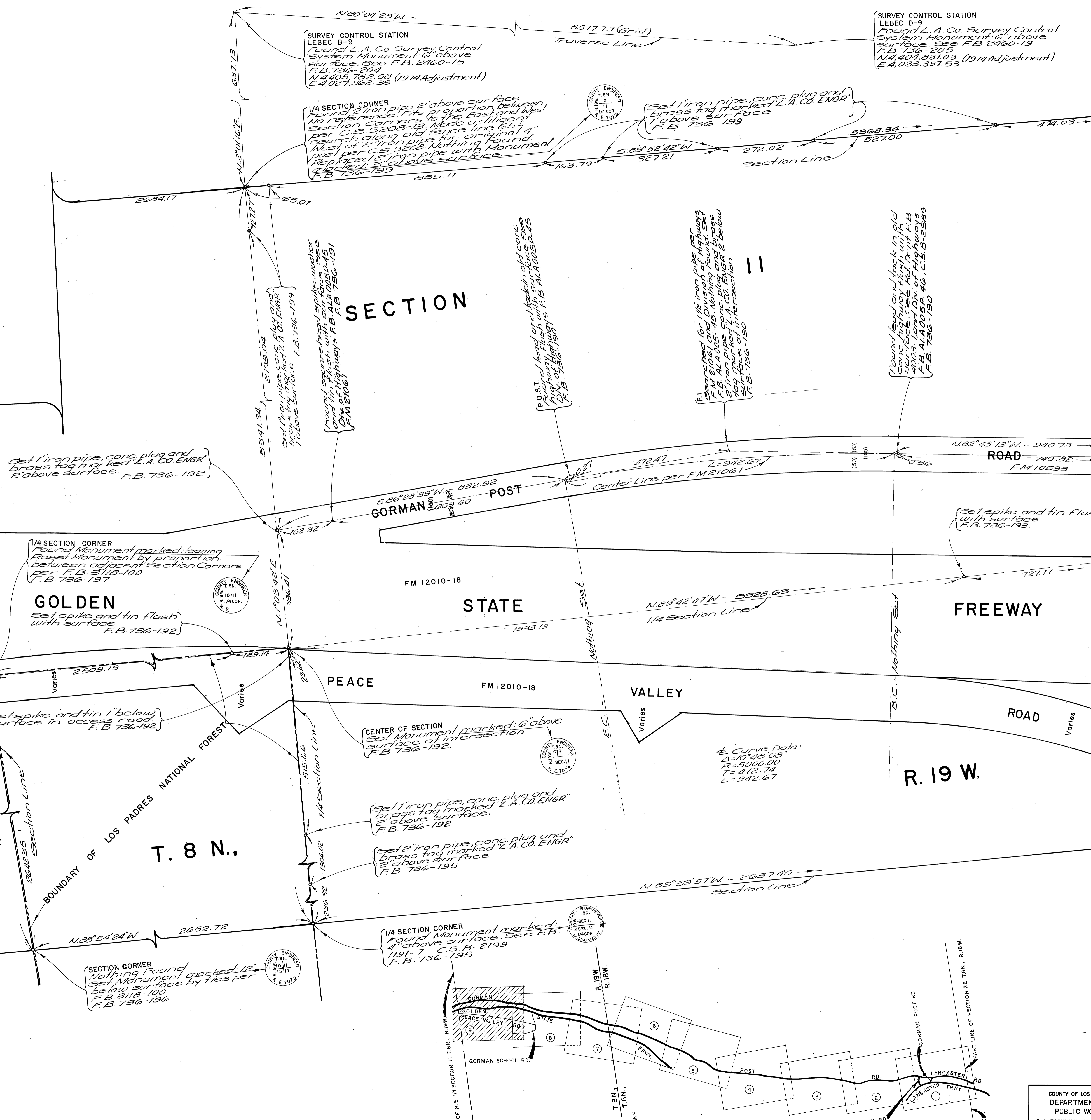
SECTION CORNER
Found Monument marked
12' below surface. See
F.B. 1191-119, C.S.B.-2199
F.B. 736-199

SECTION CORNER
Found Monument marked
12' below surface. See
F.B. 1191-119, C.S.B.-2199
F.B. 736-199

SECTION CORNER
Found Monument marked
12' below surface. See
F.B. 1191-119, C.S.B.-2199
F.B. 736-199

SECTION CORNER
Found Monument marked
12' below surface. See
F.B. 1191-119, C.S.B.-2199
F.B. 736-199

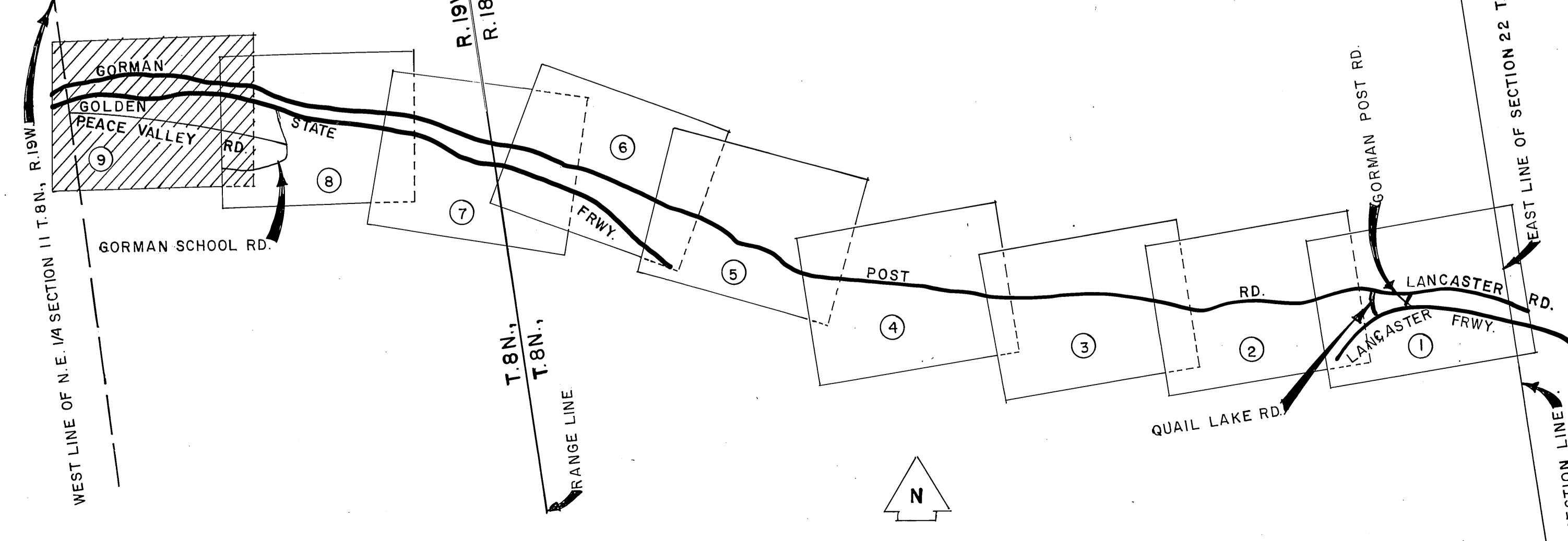
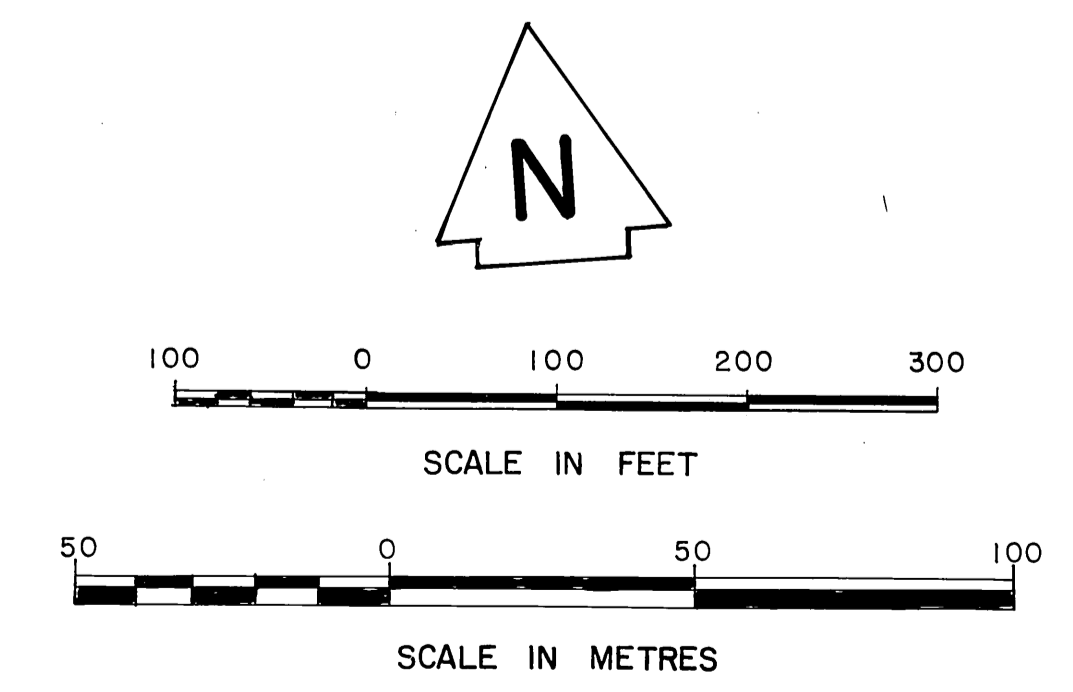
SECTION CORNER
Found Monument marked
12' below surface. See
F.B. 1191-119, C.S.B.-2199
F.B. 736-199



C.S.B.-5476-B

NOTE

THIS MAP SUPERSEDES THE ALIGNMENT OF GORMAN POST ROAD AS SHOWN ON FM 18013-5, FM 10593 AND FM 21061 WITHIN THE LIMITS SHOWN HEREIN. SEE I.E.C. MINUTES DATED FEBRUARY 19, 1970.
ALSO SHOWN IS THE RECLASSIFICATION FROM A MAJOR HIGHWAY TO A SECONDARY HIGHWAY AS SHOWN ON THE LOS ANGELES COUNTY GENERAL PLAN NOVEMBER 1980.



COUNTY OF LOS ANGELES DEPARTMENT OF PUBLIC WORKS T. A. TIDEMANSON - COUNTY ENGINEER PREPARED BY MAPPING DIVISION ARMANDO CID DIVISION ENGINEER SURVEYED BY W. ALBRIGHT CHECKED BY R. HILARIO DRAWN BY B. GOINS - G. MASUDA	ALIGNMENT MAP OF GORMAN POST ROAD FROM EAST LINE OF SECTION 22, T.8N., R.18W. TO WEST LINE OF NE 1/4 SECTION II, T.8N., R.19W. BASIS OF BEARINGS CALIFORNIA COORDINATE SYSTEM, ZONE 7		COUNTY SURVEYOR'S MAP NO. B-5476 SHEET 9 OF 9 SHEETS FILED: <i>[Signature]</i> 19 80 DEPUTY SURVEYED MAR. 1974 REFERENCE F.B. 736
	JOB NUMBER 1518.06		INDEX MAP NO. 384-037
	COUNTY ENGINEER'S SEAL ARMANDO CID DIVISION ENGINEER No. 15114 State of California		
	COUNTY ENGINEER'S SEAL W. ALBRIGHT No. 15114 State of California		