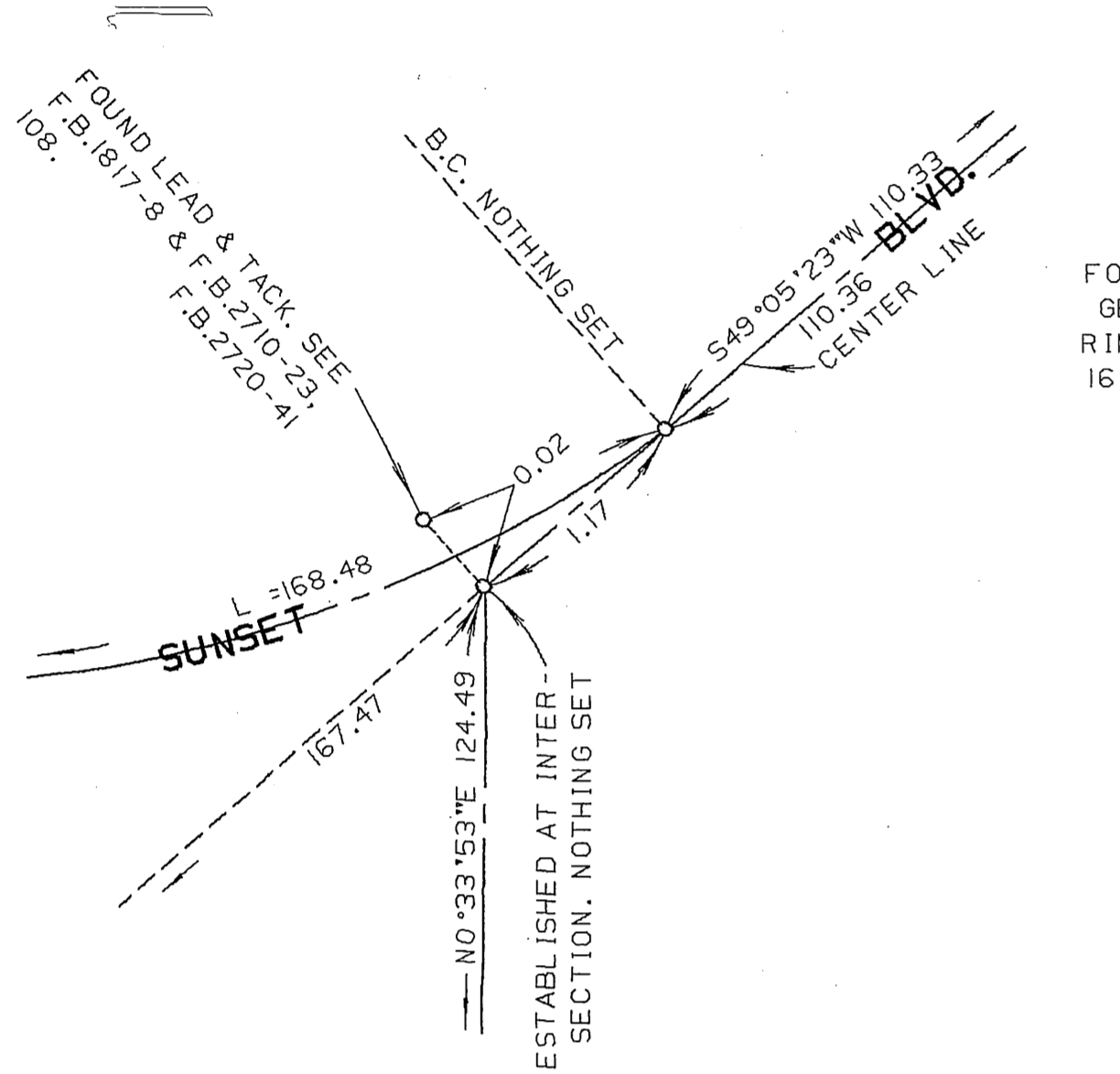
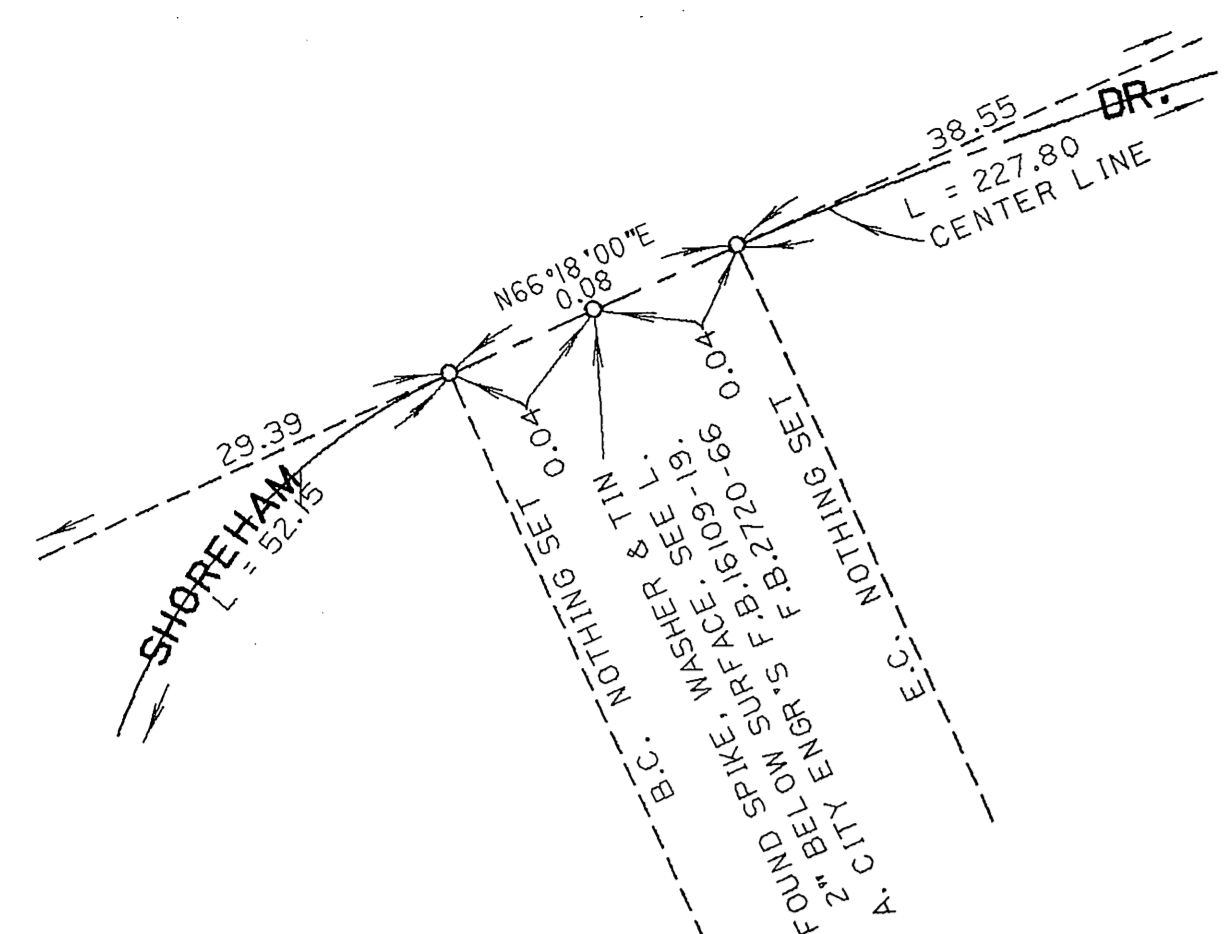
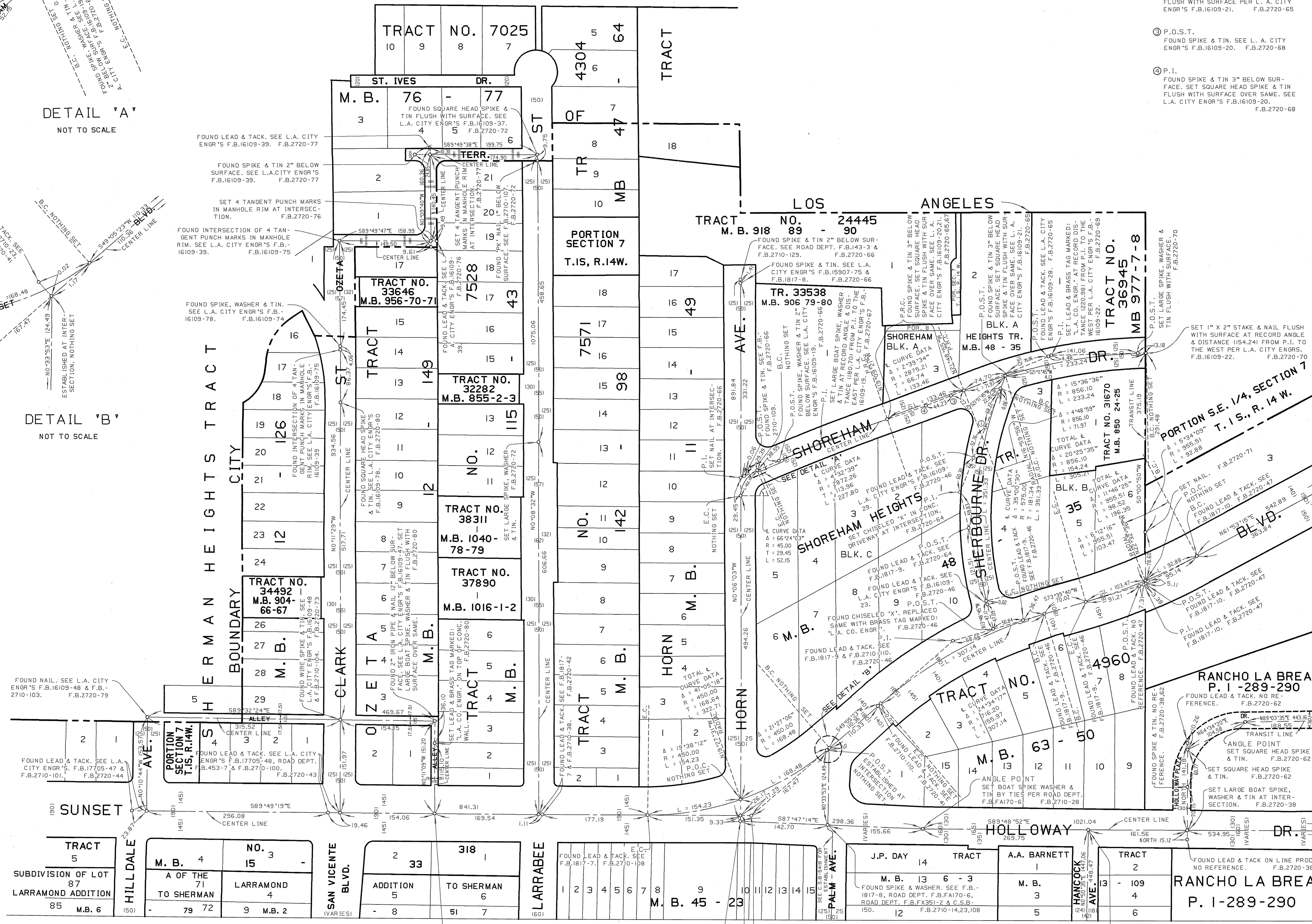


COUNTY OF LOS ANGELES DEPARTMENT OF PUBLIC WORKS PREPARED BY T.A. IDEMANSON - COUNTY ENGINEER MAPPING AND PROPERTY MANAGEMENT DIVISION SURVEYED BY <u>D. L. BURKHOLDER</u> CHECKED BY <u>B. G. HILARIO</u> DRAWN BY <u>D. MASUDA</u>	MAP OF <b>STREETS IN A PORTION OF          WEST HOLLYWOOD &amp; SHERMAN          SEWER MAINTENANCE DISTRICT</b>		COUNTY SURVEYOR'S MAP NO <b>B-5490</b> SHEET 1 OF 3 SHEETS FILED: <u>3/14</u> 19 <u>82</u> <u>[Signature]</u> DEPUTY SURVEYED MARCH 1961 - JUNE 1962 F.B. 3218 F.B. 2710 JOB NUMBER 0208.11 INDEX MAP NO 129-157,144-157
	BASIS OF BEARINGS CALIFORNIA COORDINATE SYSTEM, ZONE 7 AS SHOWN ON C.S.B-5418		

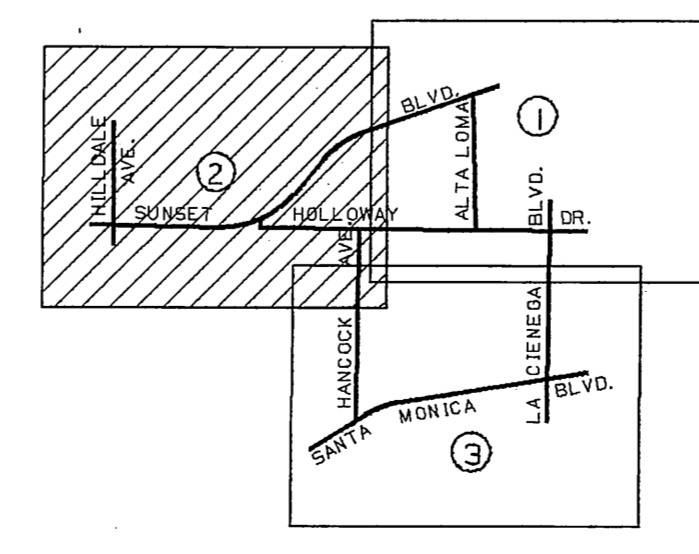
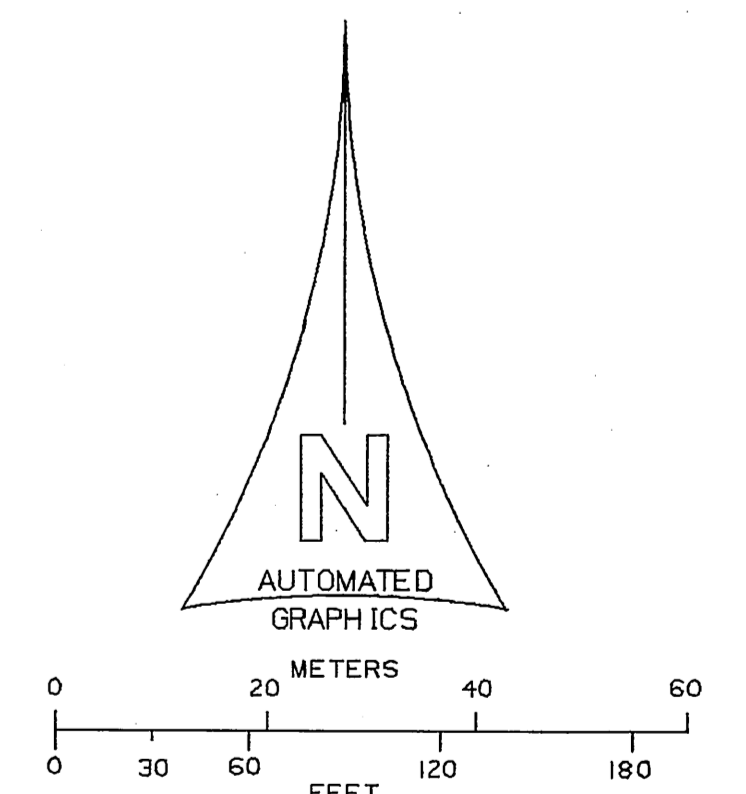


DETAIL 'A' NOT TO SCALE

DETAIL 'B' NOT TO SCALE

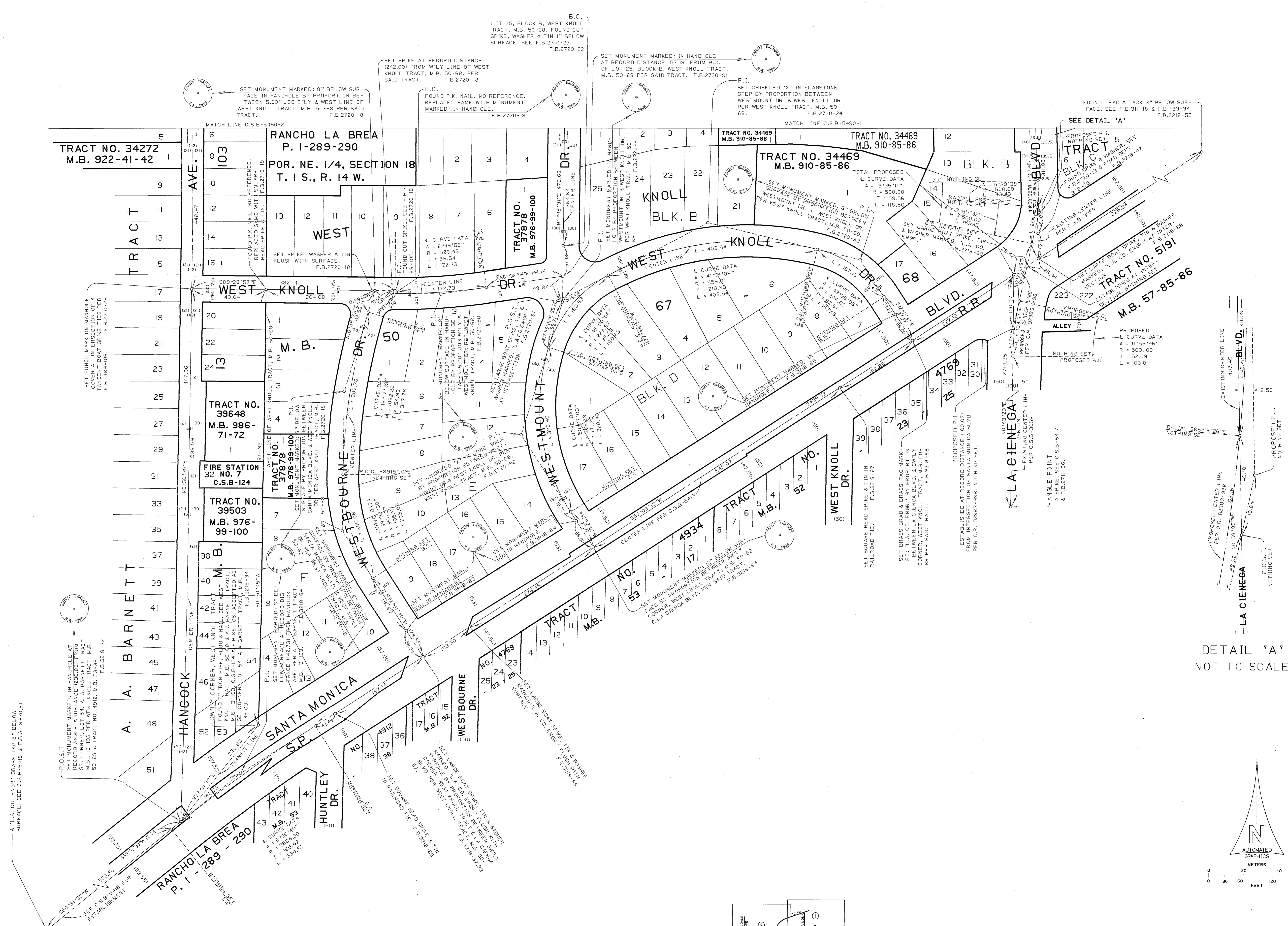


- ① P.O.S.T. FOUND SPIKE & TIN 1" BELOW SURFACE. SEE L.A. CITY ENGR'S F.B.16109-23 & 29. F.B.2720-64
- ② P.O.S.T. FOUND DISTURBED SPIKE & TIN. SET SQUARE HEAD SPIKE & TIN AT RECORD DISTANCE (26.35) FROM THE NORTH FLUSH WITH SURFACE PER L.A. CITY ENGR'S F.B.16109-21. F.B.2720-65
- ③ P.O.S.T. FOUND SPIKE & TIN. SEE L.A. CITY ENGR'S F.B.16109-20. F.B.2720-68
- ④ P.I. FOUND SPIKE & TIN 3" BELOW SURFACE. SET SQUARE HEAD SPIKE & TIN FLUSH WITH SURFACE OVER SAME. SEE L.A. CITY ENGR'S F.B.16109-20. F.B.2720-68

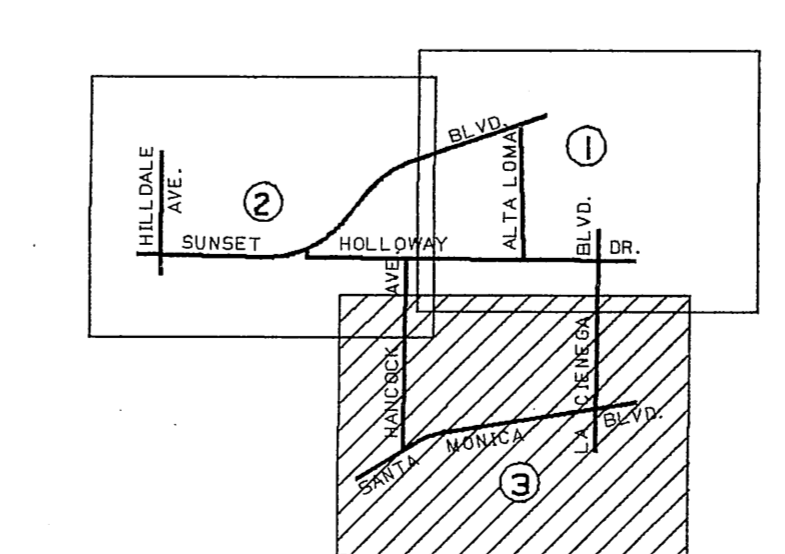


INDEX MAP NOT TO SCALE

COUNTY OF LOS ANGELES DEPARTMENT OF PUBLIC WORKS T.A. TIDEMANSON - COUNTY ENGINEER PREPARED BY MAPPING AND PROPERTY MANAGEMENT DIVISION	MAP OF <b>STREETS IN A PORTION OF          WEST HOLLYWOOD &amp; SHERMAN          SEWER MAINTENANCE DISTRICT</b>	COUNTY SURVEYOR'S MAP NO <b>B-5490</b> SHEET 2 OF 3 SHEETS FILED: <i>7/11/1984</i> DEPUTY SURVEYED MARCH 1961 - JUNE 1962 F.B.3218 F.B.2710 JOB NUMBER 0208.11 INDEX MAP NO 129-157,144-157
SURVEYED BY <u>D.L. BURKHOLDER</u> CHECKED BY <u>B.G. HILARIO</u> DRAWN BY <u>S. MASUDA</u>	BASIS OF BEARINGS CALIFORNIA COORDINATE SYSTEM, ZONE 7 AS SHOWN ON C.S.B-5418	



DETAIL 'A'  
NOT TO SCALE



COUNTY OF LOS ANGELES DEPARTMENT OF PUBLIC WORKS T.A. TIDEMANSON - COUNTY ENGINEER PREPARED BY MAPPING AND PROPERTY MANAGEMENT DIVISION	MAP OF <b>STREETS IN A PORTION OF          WEST HOLLYWOOD &amp; SHERMAN          SEWER MAINTENANCE DISTRICT</b>		COUNTY SURVEYOR'S MAP NO <b>B-5490</b> SHEET 3 OF 3 SHEETS
	SURVEYED BY <u>D. L. BURKHOLDER</u> CHECKED BY <u>R. G. HILARIO</u> DRAWN BY <u>G. MASUDA</u>		FILED: <u>1982</u> SURVEYED MARCH 1961 - JUNE 1962 REFERENCE F.B. 3218 F.B. 2710 JOB NUMBER 0208.11 INDEX MAP NO 123-167,144-157
BASIS OF BEARINGS CALIFORNIA COORDINATE SYSTEM, ZONE 7 AS SHOWN ON C.S.B-5418			