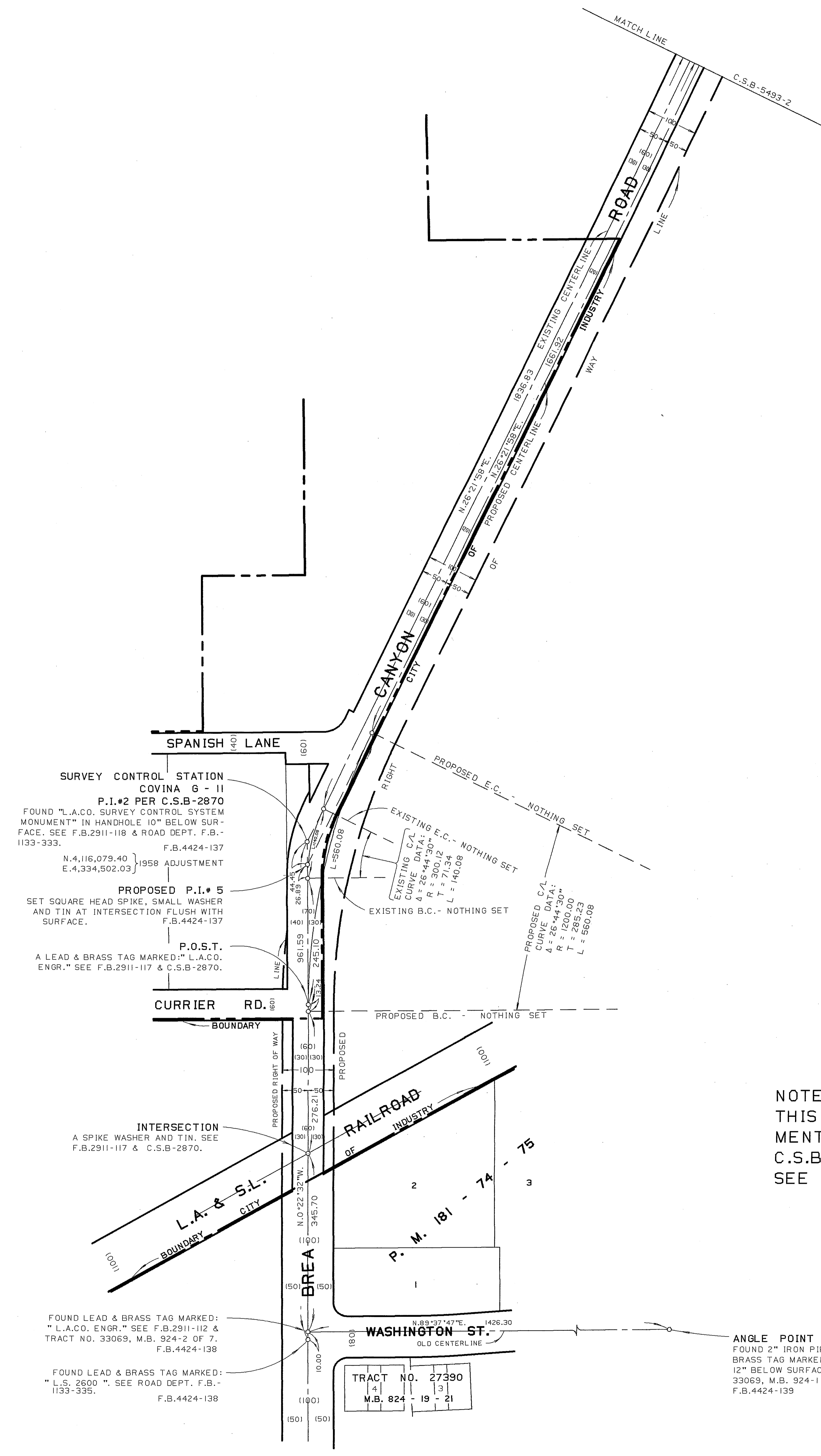
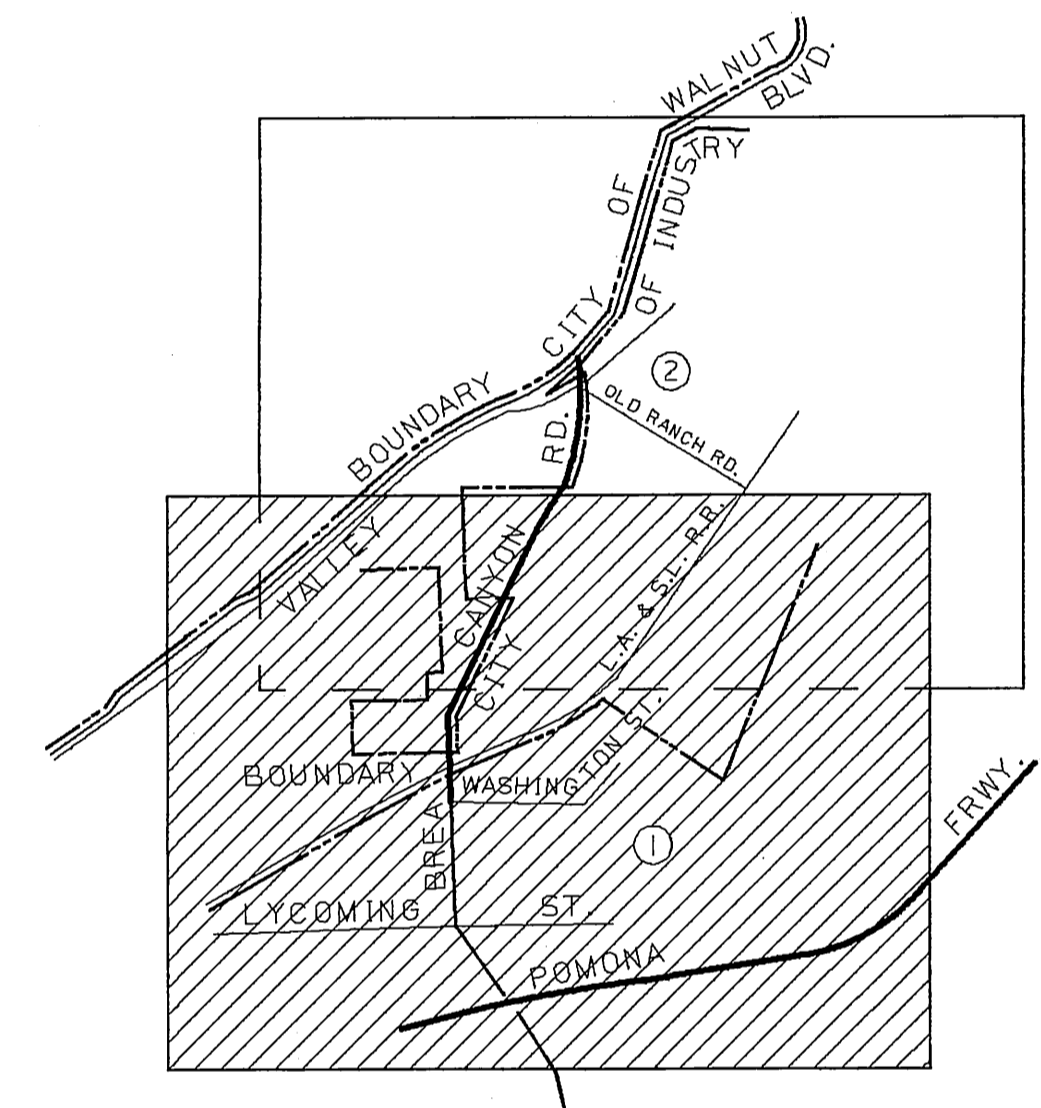


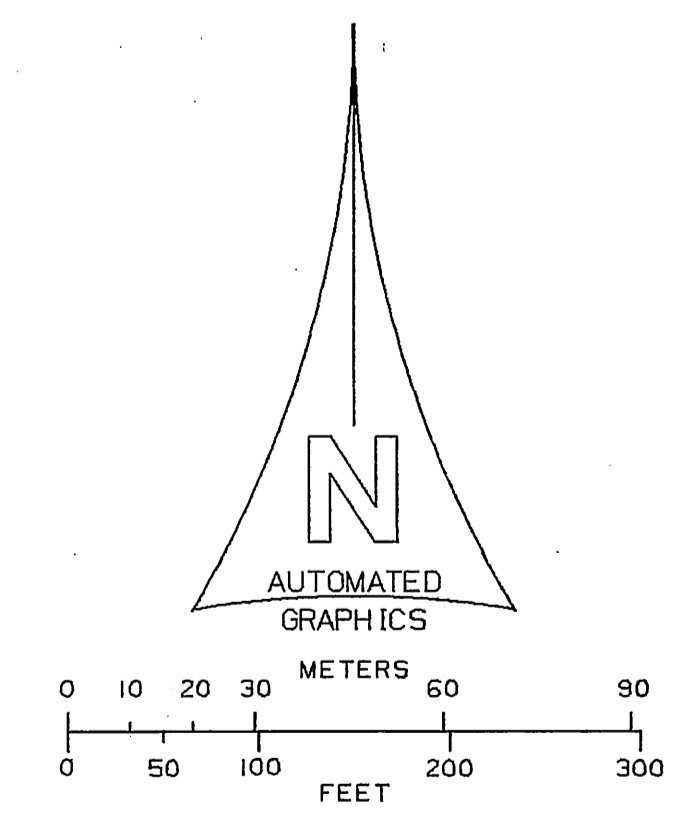
C.2.B-2493-2



NOTE:
 THIS MAP SUPERSEDES THE PROPOSED ALIGNMENT OF BREA CANYON ROAD AS SHOWN ON C.S.B-2870 WITHIN THE LIMITS SHOWN HEREIN. SEE I.E.C. MINUTES DATED MARCH 22, 1984.

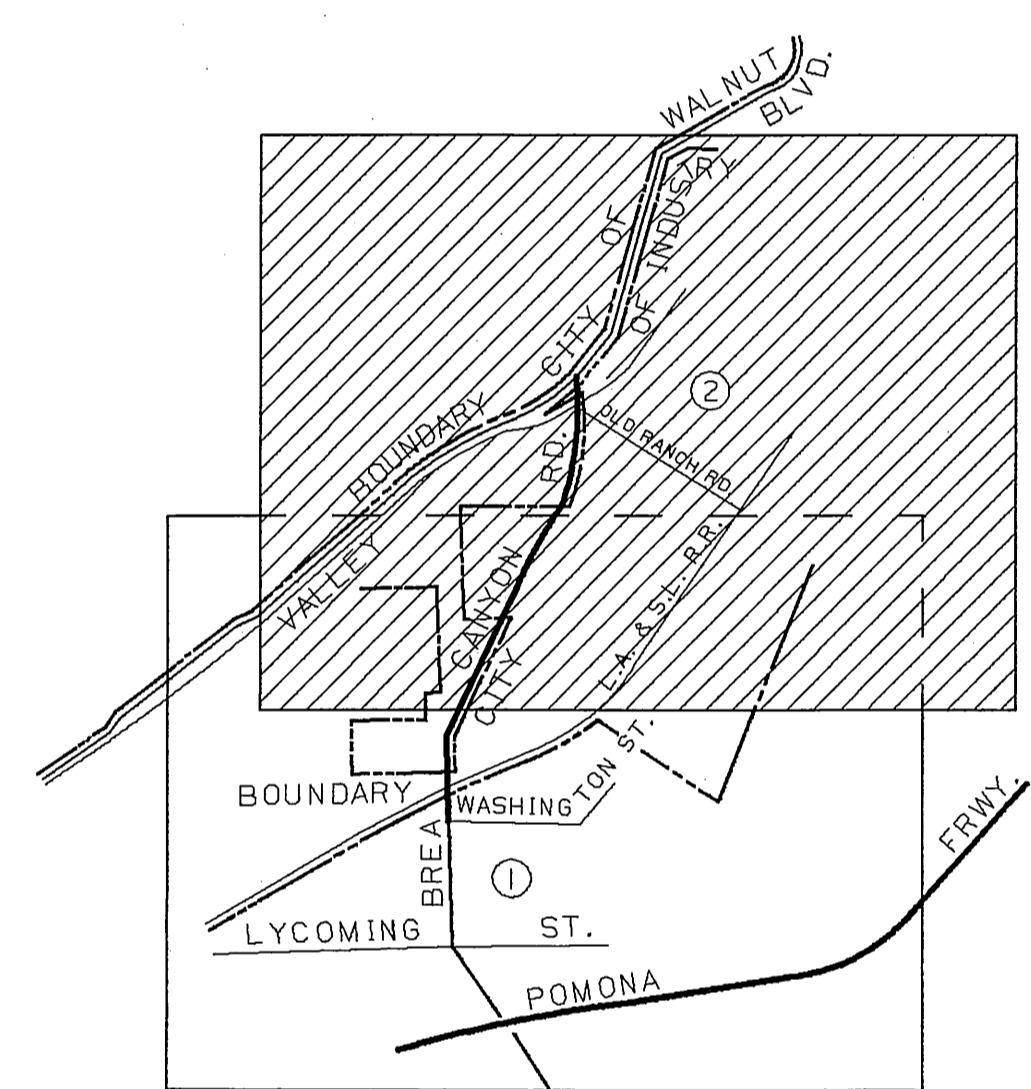


INDEX MAP
NOT TO SCALE

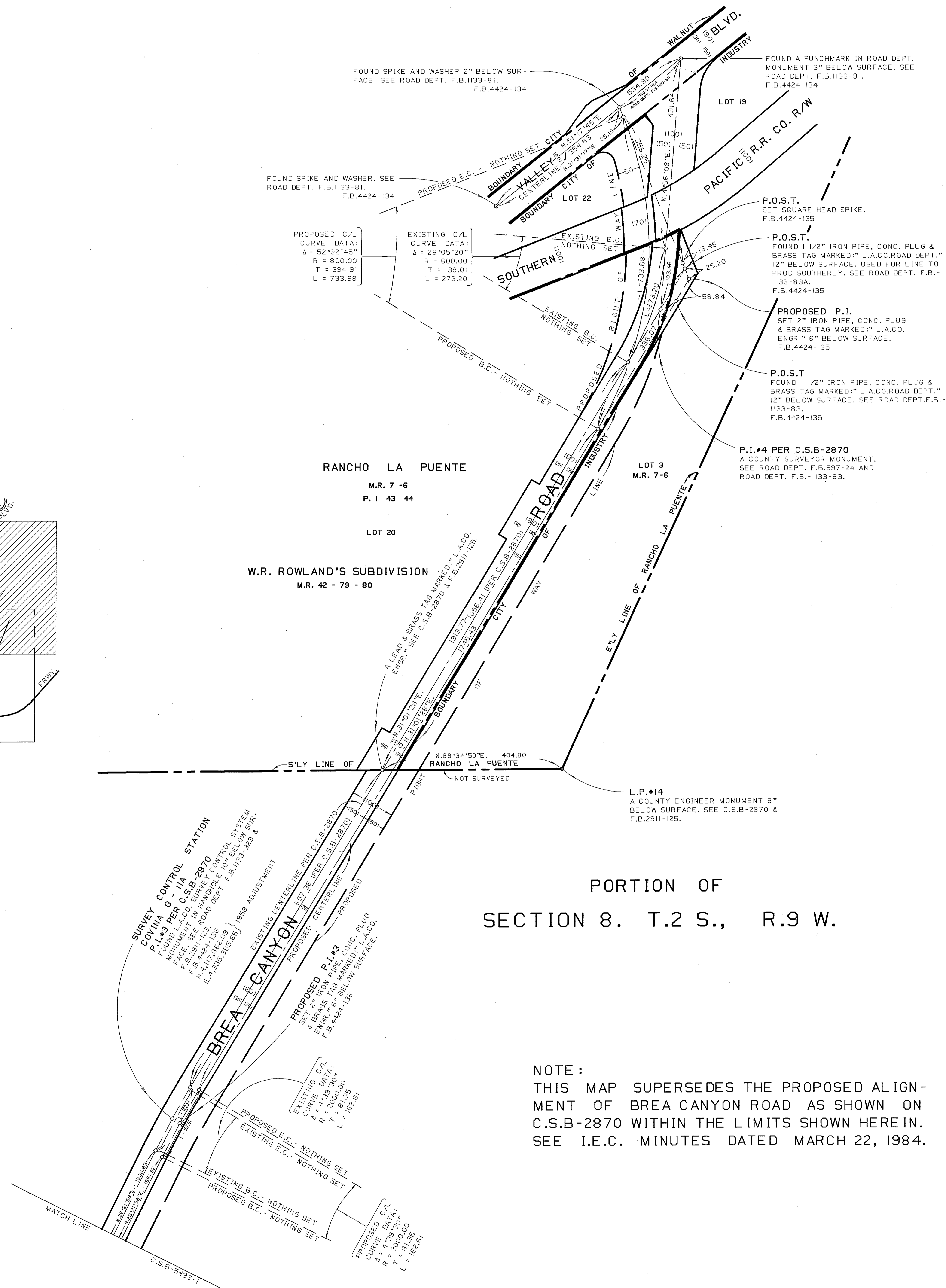


COUNTY OF LOS ANGELES DEPARTMENT OF PUBLIC WORKS T. A. TIDEMANSON - COUNTY ENGINEER PREPARED BY MAPPING AND PROPERTY MANAGEMENT DIVISION AND SURVEY DIVISION SURVEYED BY <u>G.O. GUILARDO</u> CHECKED BY <u>R.O. HILARIO</u> DRAWN BY <u>D.W. FALBERG</u>	MAP OF BREA CANYON ROAD FROM WASHINGTON ST. NORTHERLY TO VALLEY BLVD. BASIS OF BEARINGS CALIFORNIA COORDINATE SYSTEM, ZONE 7		COUNTY SURVEYOR'S MAP NO B-5493 SHEET 1 OF 2 SHEETS FILED: <u>8/5</u> 1984 AUGUST 1984 REFERENCE C.S.B-2870, F.B.2911, F.B.4424 JOB NUMBER 1529.38
			INDEX MAP NO 114-317

C.2.B-2493-1

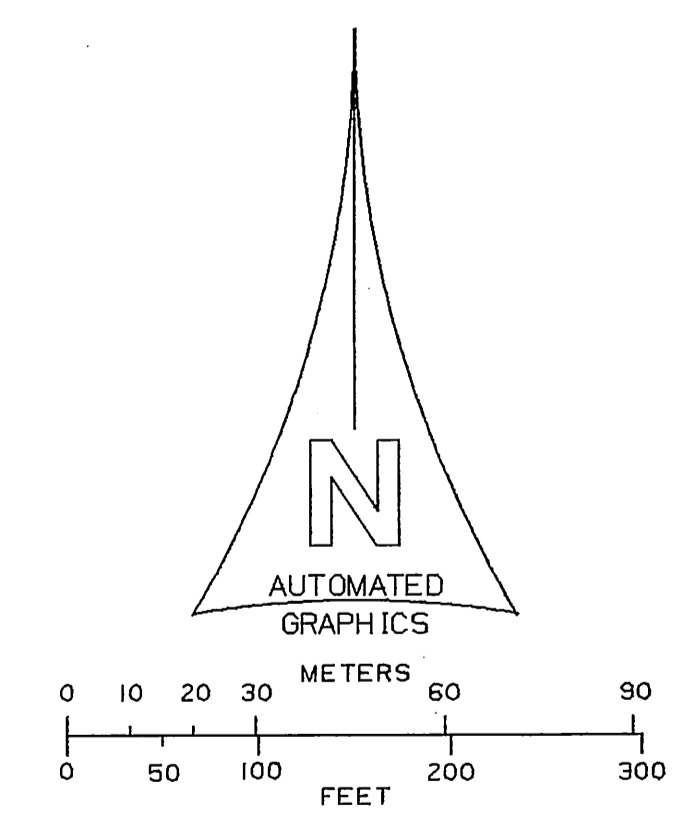


INDEX MAP
NOT TO SCALE



PORTION OF
SECTION 8. T.2 S., R.9 W.

NOTE:
THIS MAP SUPERSEDES THE PROPOSED ALIGNMENT OF BREA CANYON ROAD AS SHOWN ON C.S.B-2870 WITHIN THE LIMITS SHOWN HEREIN. SEE I.E.C. MINUTES DATED MARCH 22, 1984.



COUNTY OF LOS ANGELES DEPARTMENT OF PUBLIC WORKS T. A. TIDEMANSON - COUNTY ENGINEER PREPARED BY MAPPING AND PROPERTY MANAGEMENT DIVISION AND SURVEY DIVISION SURVEYED BY - G.D. SUJZADO CHECKED BY - R.G. HILARIO DRAWN BY - B.N. TELEBRICO	MAP OF BREA CANYON ROAD FROM WASHINGTON ST. NORTHERLY TO VALLEY BLVD. BASIS OF BEARINGS CALIFORNIA COORDINATE SYSTEM, ZONE 7		COUNTY SURVEYOR'S MAP NO B-5493 SHEET 2 OF 2 SHEETS FILED: 8/5/84 1984 ASST. DEPUTY DIRECTOR SURVEYED AUGUST 1984 REFERENCE C.S.B-2870, F.B.2911, F.B.4424 JOB NUMBER 1529.38 INDEX MAP NO 114-317

C.S.B-2870-5