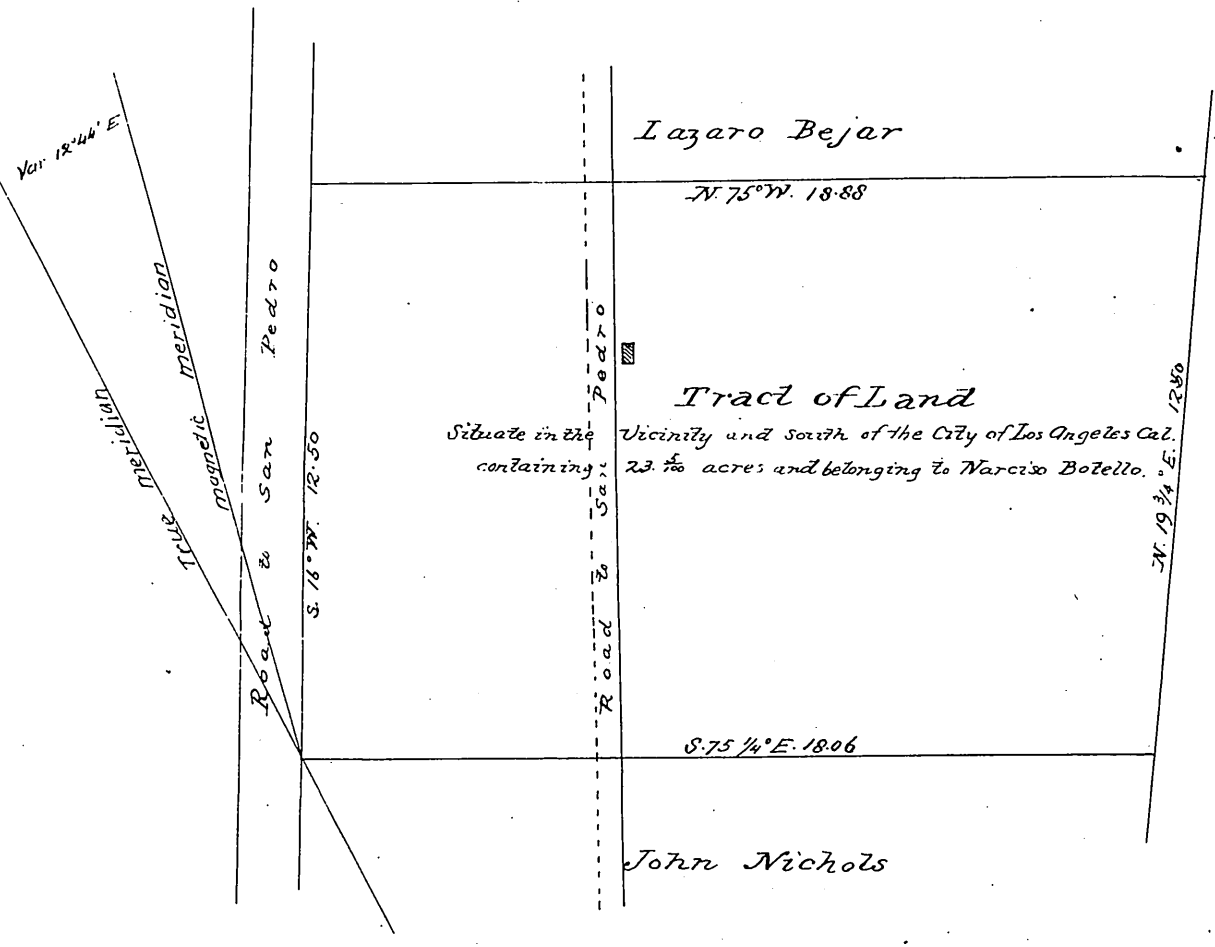
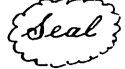


Surveyed February 1853 by G. Hansen.
 Dep. County Surveyor of Los Angeles County Cal.



Stephen B Forster
 Mayor
 April 6. 1853



Crisostomo Bejar

I hereby certify this to be a correct copy of a plot of a survey executed by me on the request of Narciso Botello in the month of February A. D. 1853, City of Los Angeles March 22^d 1855
 Geo. Hansen Deputy County Surveyor of Los Angeles County

Recorded November 11th 1857, at 11⁴⁵ AM,
 at request of Calvin Hardy.

Calvin Hardy