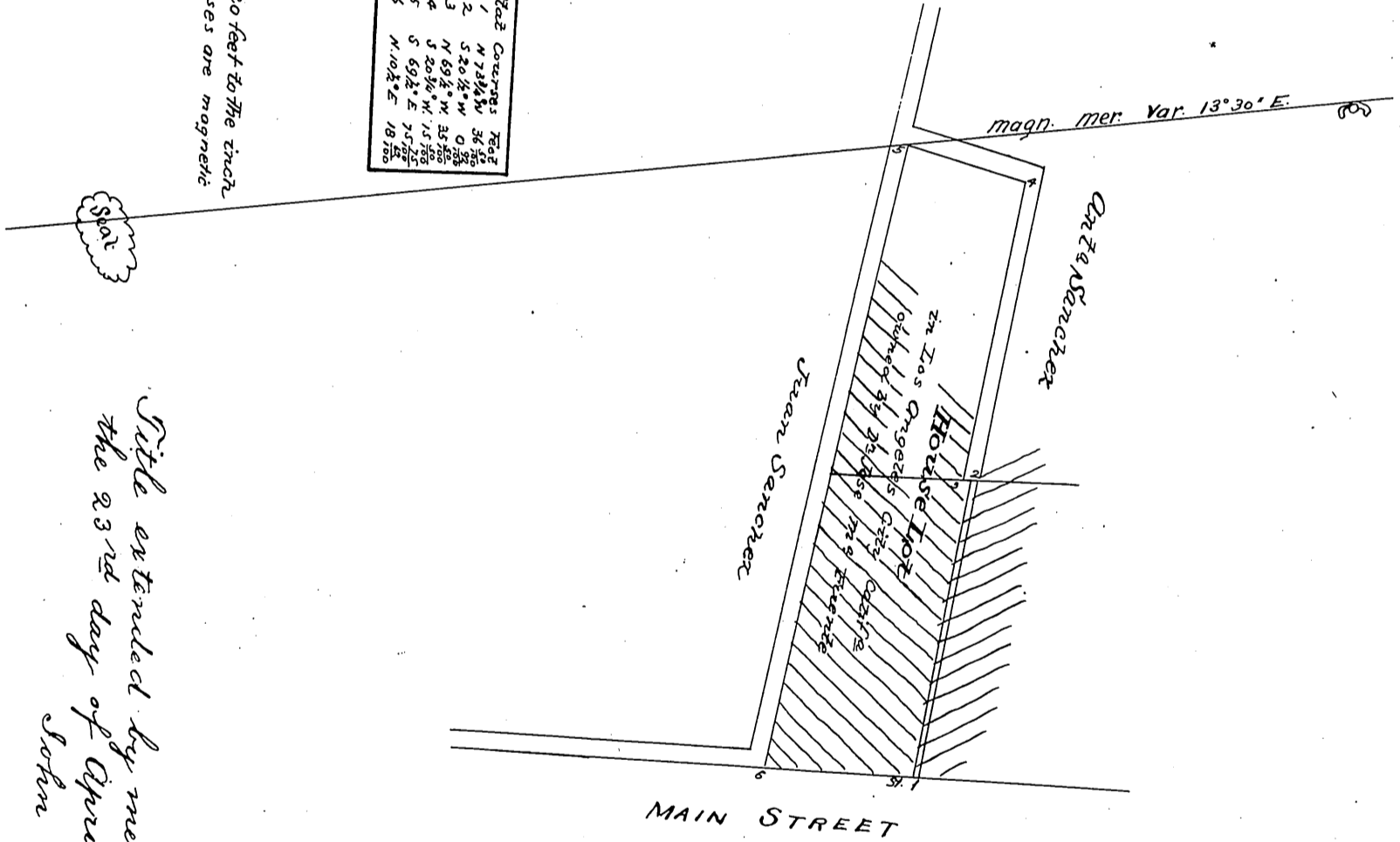


STAKE	COURSES	FEET
1	N 73 1/2° W	34 1/2
2	S 20 1/2° W	0 3/4
3	N 69 1/2° W	35 1/2
4	S 20 1/2° W	13 1/2
5	S 69 1/2° E	37 1/2
6	N 10 1/2° E	18 1/2

Scale of 20 feet to the inch  
The courses are magnetic



Site extended by me on this  
the 23<sup>rd</sup> day of April A.D. 1857  
John S. Nichols  
Mayor

I hereby certify this to be a correct plot of survey executed  
by me at the request of Dr. Jose Maria Fuentes, on the 21<sup>st</sup>  
day of April, 1857.

Los Angeles City April 22<sup>d</sup> 1855, Adolphus F. Waldemar

Co. Surveyor Los Angeles Co. Cal<sup>a</sup>

Recorded Nov. 19<sup>th</sup> 1857, at 4<sup>th</sup> PM.  
at request of I. M. Fuentes.

Compt.  
J. S. Nichols