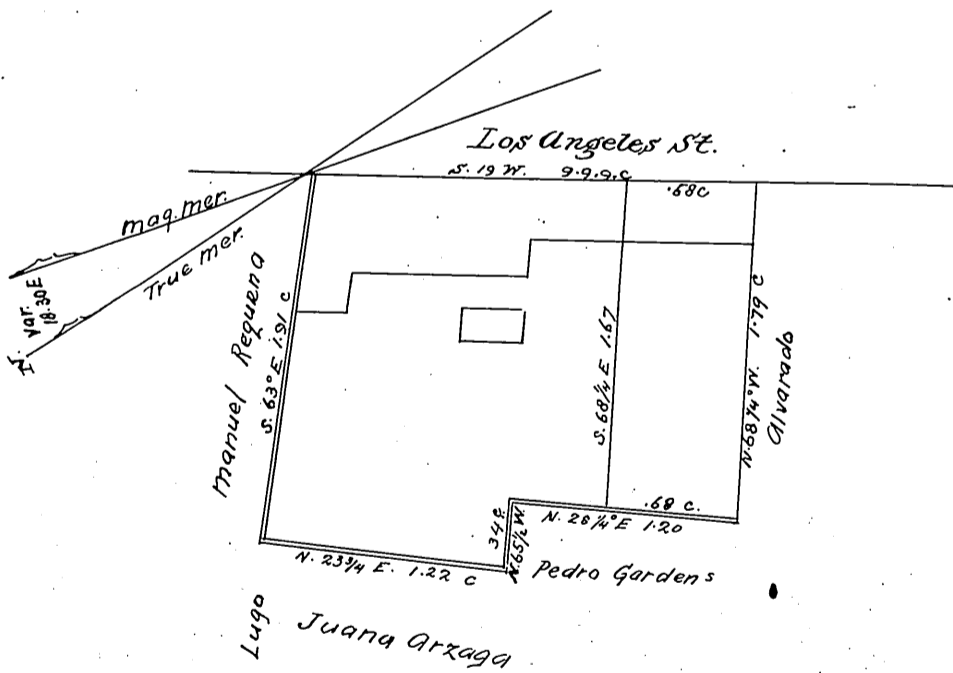


Plan of a tract of Land granted to Nepomoseno Alvarado and Manuel Castello in the year 1844, being situated on the western side of Los Angeles St, described as containing 50 varas front by 40 in depth; surveyed June 4<sup>th</sup> 1859, by W<sup>m</sup> Moore, County Surveyor of Los Angeles County.



Recorded June 6<sup>th</sup> 1859, at 9<sup>o</sup> AM.  
at request of Mr. Norton.

Comd.  
A. J. S.