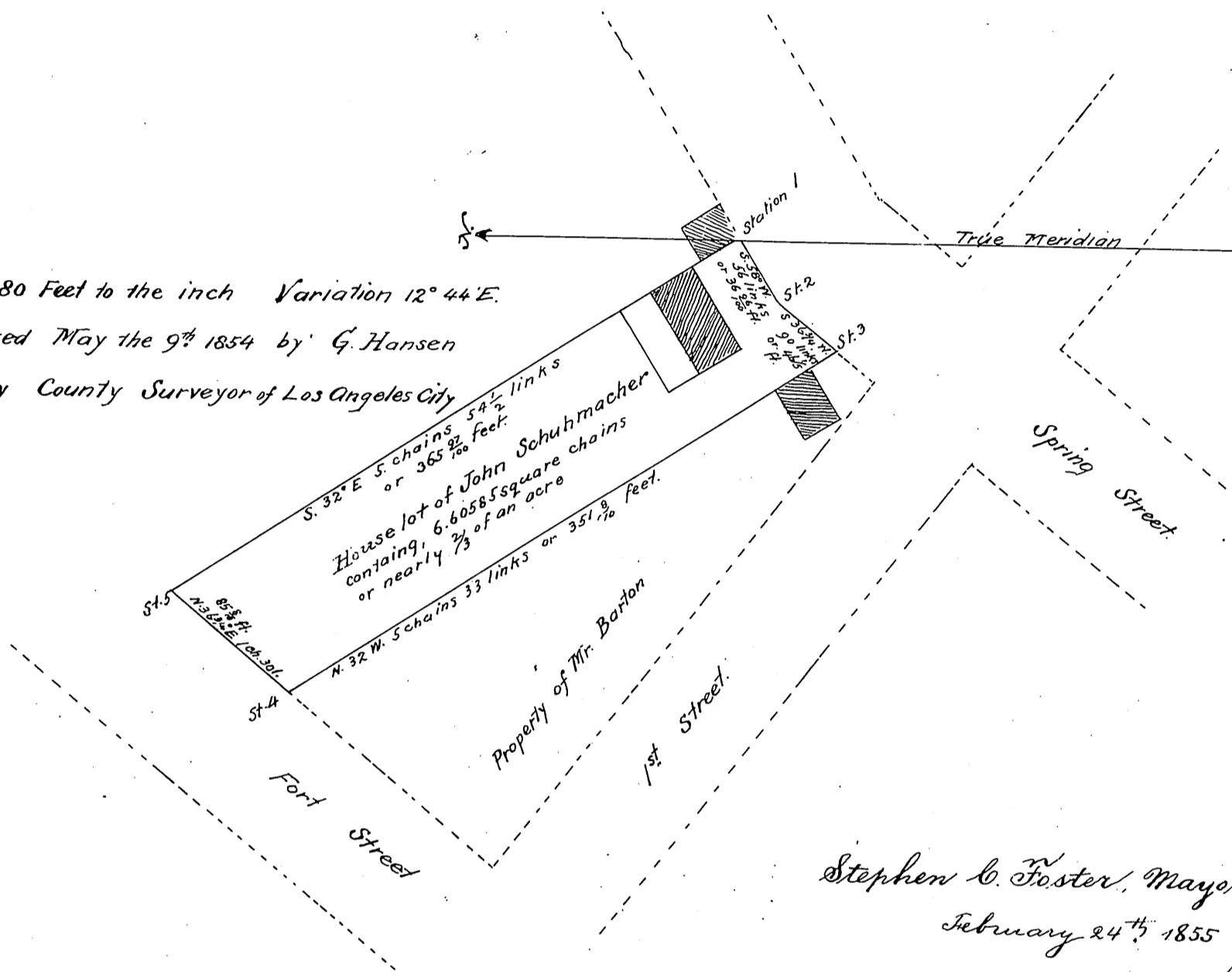


Scale 80 Feet to the inch Variation 12° 44' E.  
 Surveyed May the 9<sup>th</sup> 1854 by G. Hansen  
 Deputy County Surveyor of Los Angeles City



Stephen C. Foster, Mayor  
 February 24<sup>th</sup> 1855 Seal

Recorded July 1<sup>st</sup> 1859, at 11<sup>o</sup> AM  
 at request of John Schumacker

For Civic Center see H:39-2