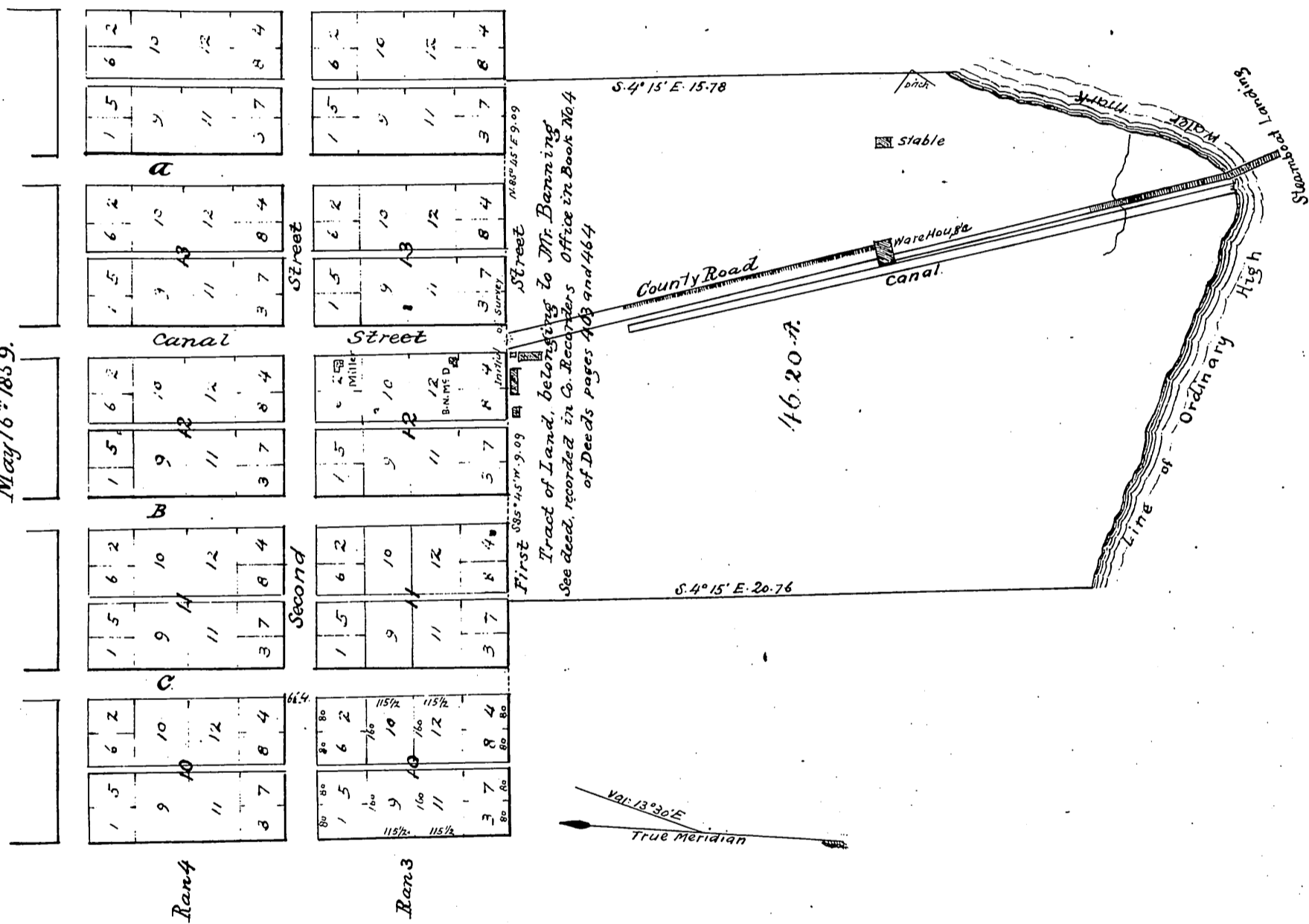


Portion of New San Pedro, as surveyed by Geo. W. Lutz  
May 16<sup>th</sup> 1859.



Tract of Land, belonging to Mr. Banning  
See deed, recorded in Co. Recorder's Office in Book No. 4  
of Deeds, pages 403 and 464

Recorded March 9<sup>th</sup> 1860, at 9<sup>15</sup> A.M.  
at request of Phineas Banning Esq.  
For change of Street Names see Ord. 33239, 38815 and 38817