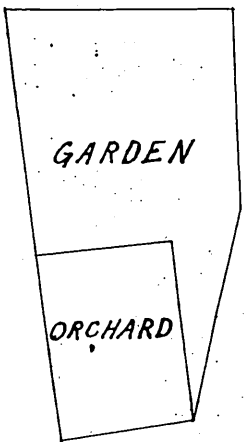
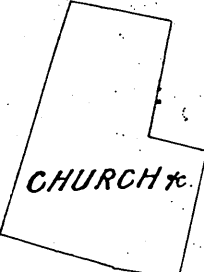
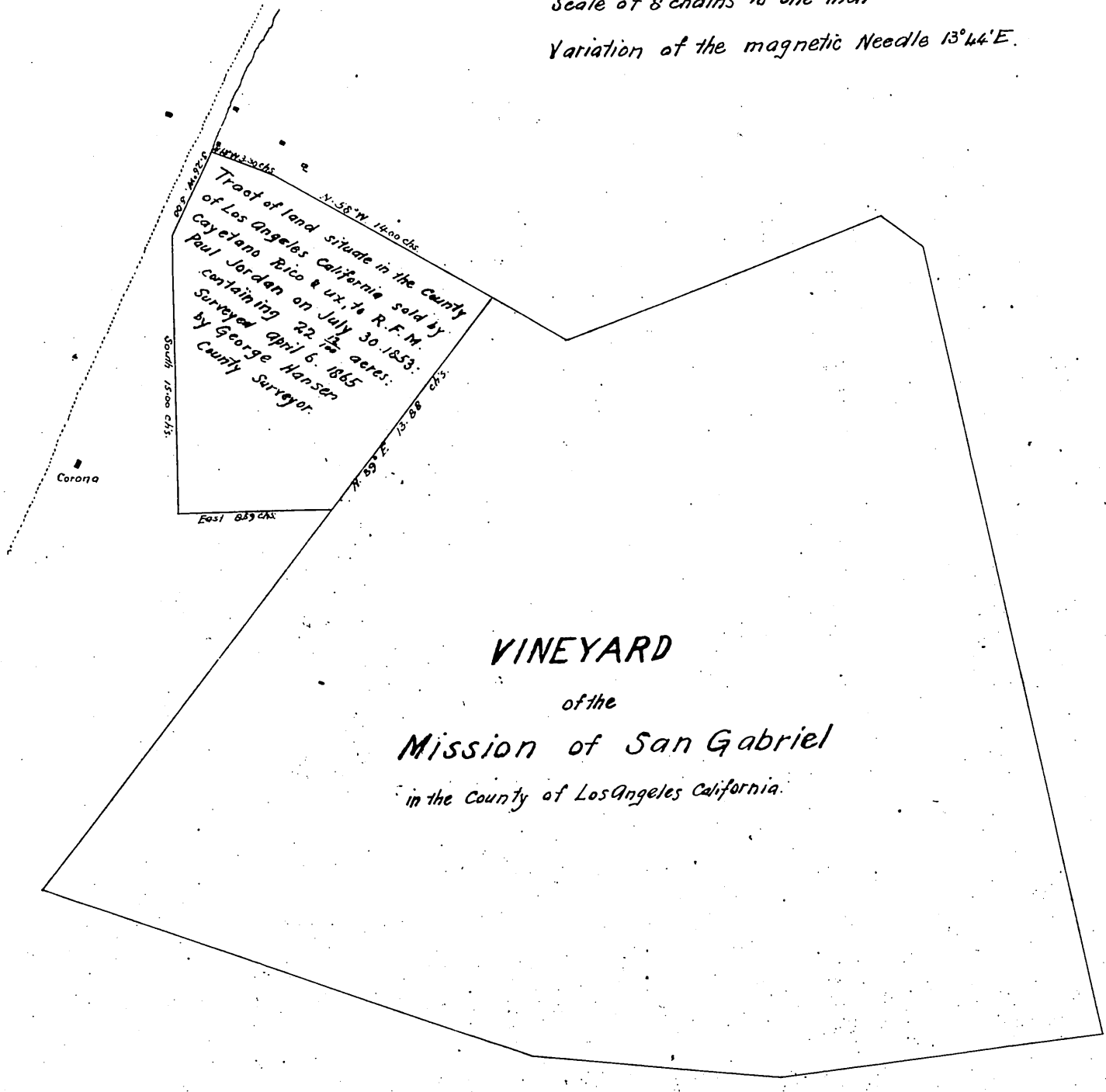


Scale of 8 chains to one inch
Variation of the magnetic Needle 13° 44' E.

True Meridian



County Surveyors Office
Los Angeles County California

I hereby certify that the above plat delineates correctly four tracts of land in the Mission San Gabriel, namely, the tract of the Church and Cemetery, the tract of the Garden and Orchard, the tract of the Vineyard, and the tract sold by Coyetano Rico et ux. to R.F.M. Paul Jordan: situate in the county of Los Angeles State of California: property of the Roman Catholic Church, at present occupied the Resident Priest, Rev. John Baso.
City of Los Angeles April 6, 1865
Geo. Hansen, County Surveyor.

Recorded October 20th 1865, at 10³⁰ A.M.
at request of Fran^{co} Mora.

Copy