

# Map of the Sanchez Vineyard

situate on the East side of Alameda Street in the City and County of Los Angeles, State of California, surveyed and subdivided on request of Don Tomas and Doña Josefa Sanchez on the 20<sup>th</sup> of December 1866 by George Hansen, County Surveyor of Los Angeles County.

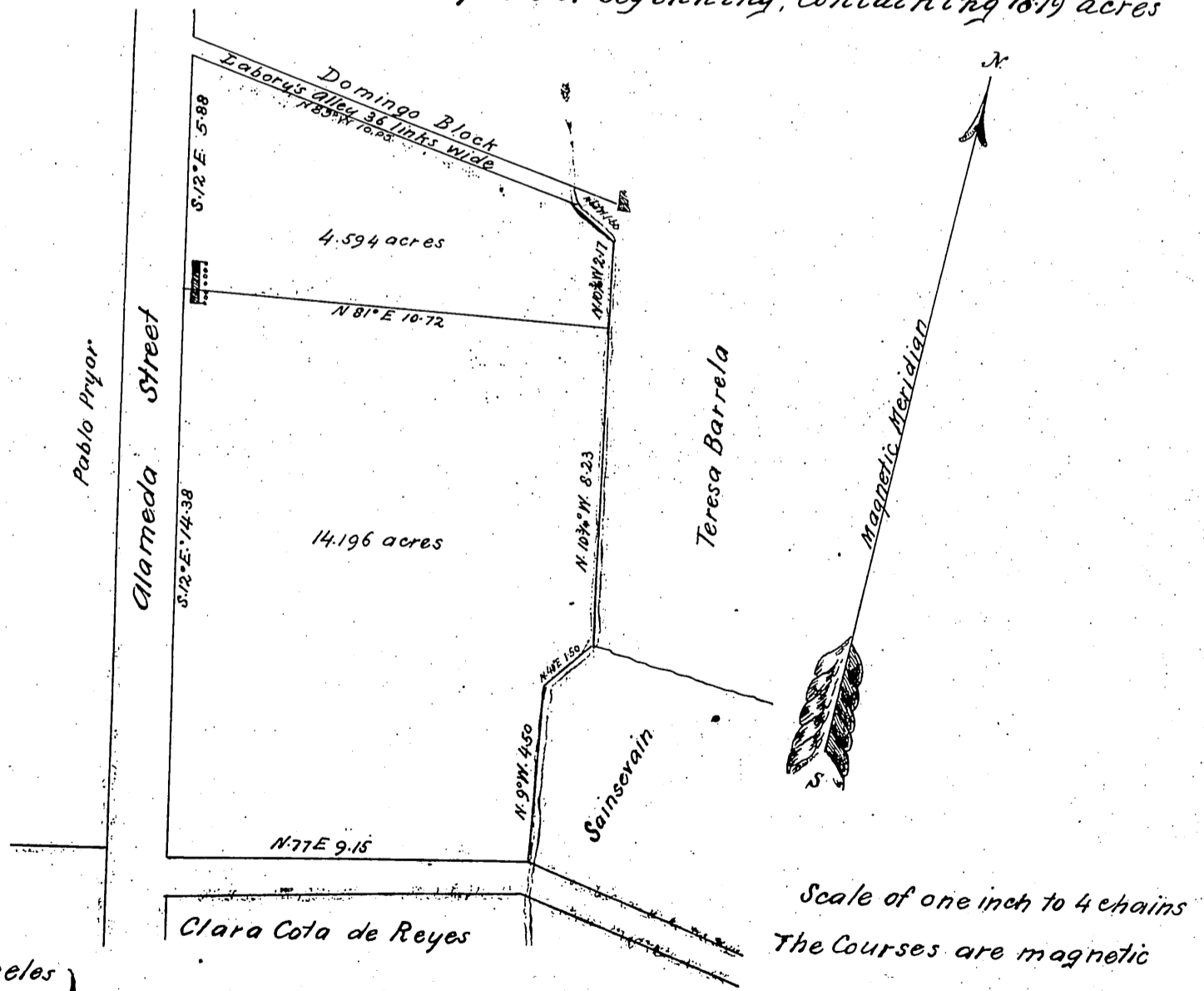
**Description:** Commencing at the South-West corner of the Sanchez Vineyard, from which bears South East corner of the Pablo Prior tract West 1.40 chs, and the North West corner of the fence of the tract of Clara Cota de Reyes S. 14° E. 0.96 chs, thence running on the South boundary

N. 77° E. 9.15 chs to the South East corner of the Sainserain Vineyard, thence on the East boundary

N. 9° W. 4.50 chs, thence N. 40° E. 1.50 chs along said Sainserain Vineyard to the South West corner of the tract of Teresa Barrela, thence N. 10 3/4° W. along the middle of the water ditch 8.23 to the division line, a Willow tree in the fence of Labory marked with three notches, said division line ranges S. 81° W. passes through the cluster of fruit trees, so as to leave one row of them to the North and strikes that one of the seven posts in the Corridor of the house, which is the Third counted from the South corner; thence N. 10 3/4° W. 2.17 chs to the North East corner of this tract, thence on the North boundary

N. 63° W. 1.60 chs to a Cypress tree on the West bank of the ditch and South Edge of Labory's Alley, from which bears another similar Cypress tree on the North Edge of said Alley N. 11° E. 0.36 chs, thence N. 83° W. 10.05 chs along the Alley of Labory, leaving the same 36 links wide to Alameda Street, thence on the West boundary

S. 12° E. 5.88 chs to the Division line, thence S. 12° E. 14.38 to the place of beginning, containing 1879 acres of land.



County of Los Angeles }  
State of California } County Surveyors Office

I hereby certify the above to be a correct plat of the Sanchez Vineyard as surveyed by me on the 20<sup>th</sup> December 1866

Los Angeles December 22<sup>d</sup> 1866

George Hansen County Surveyor.

Recorded April 26<sup>th</sup> 1867, at 9<sup>o</sup> AM.

at request of T. A. Sanchez

*George Hansen*