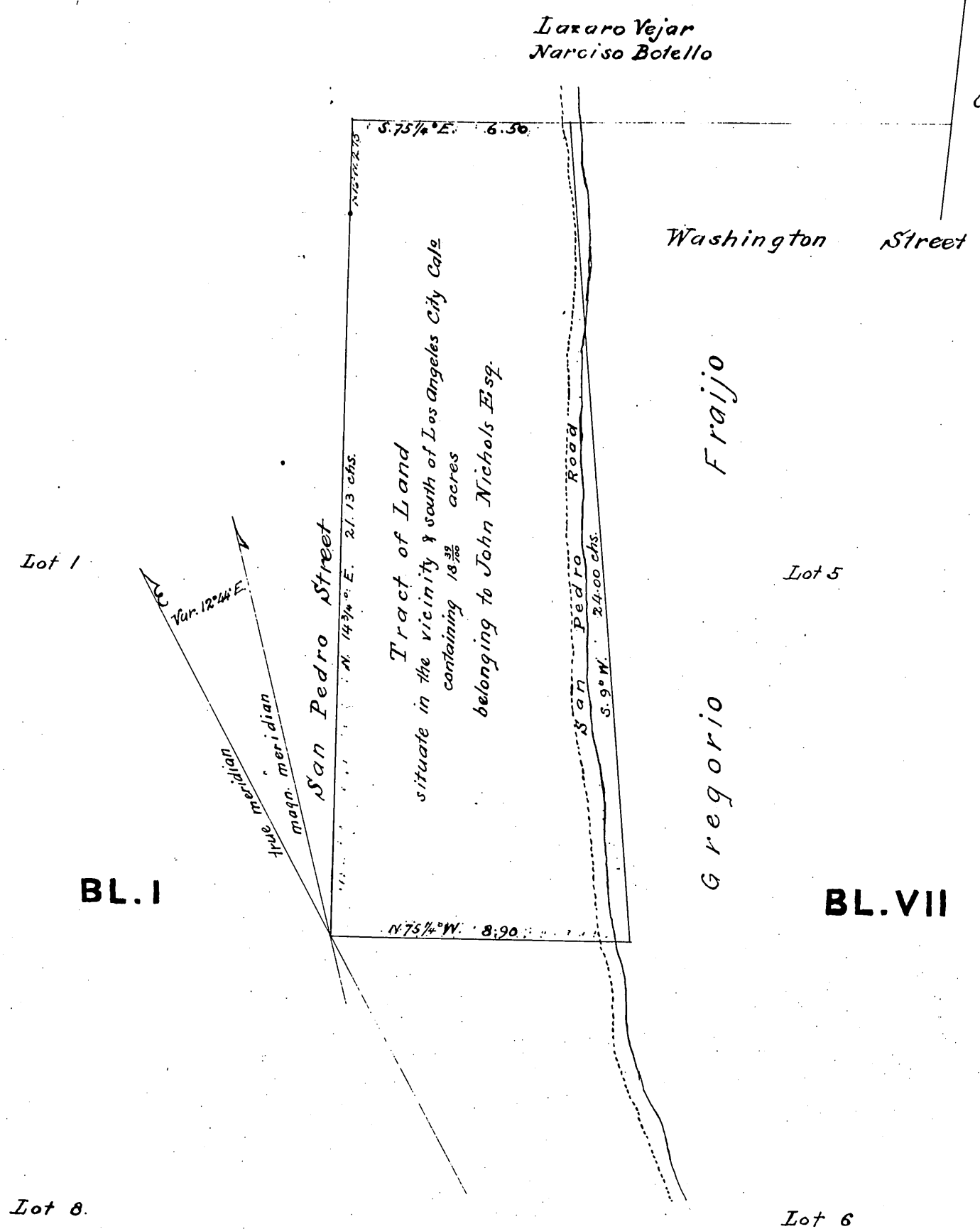


Lazaro Vejar
Narciso Botello

Crisostomo Vejar



Scale: 4 chains to one inch. Var. 12° 44' E.

The courses are magnetic.

Surveyed July 1855 by G. Hansen, Dep. County Surveyor.

Remarks: In the year 1844, the City ceded to Lazaro Bejar & John Young a tract of land containing 1200 varas front on San Pedro Street, and 500 varas in depth; bounded on the North by lands of Basilio Valdez; on the East by the lands of Crisostomo Bejar; and on the South by Public Land. John Young, to whom, by mutual agreement of the parties, the southern half of this tract was allotted, sold to John Nichols 400 varas square and to Gregorio Fraijo 300 varas square. In the month of January and February 1855 the above described tract was surveyed on request of the parties, in presence of the adjoining neighbors, and it was found that the larger portion of John Young's half was afterwards granted by the City to Gregorio Fraijo, who had improved and was occupying the same ever since. As the titles of John Nichols and Gregorio Fraijo were conflicting, they agreed, that Gregorio Fraijo leaves the above represented tract, with all the improvements thereon to John Nichols, and the latter relinquishes all the rest of the land in favor of Gregorio Fraijo.

Thereby certify, the above to be a correct plat of a tract of land surveyed by me July 2, 1855 at request of and in conformity with an agreement between John Nichols and Gregorio Fraijo.
 Los Angeles City }
 July 5th 1855 }

G. Hansen
 Deputy County Surveyor of Los Angeles County

Recorded December 29th A.D. 1868 at 9⁰⁰ AM
 at request of E. Daverede.

Corrected