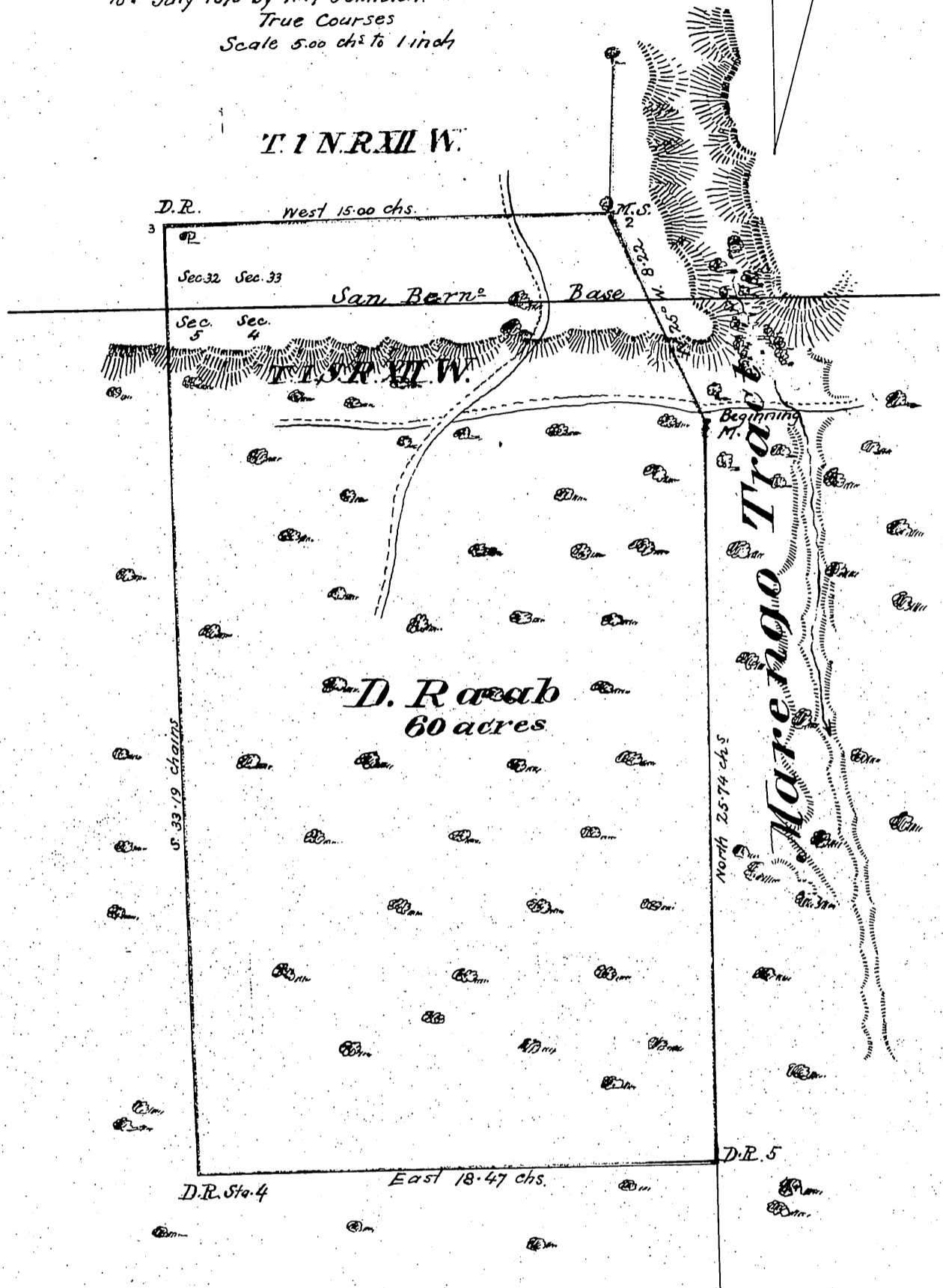


Map
 of
 a 60 acre tract, being a
 portion of the Rancho San Pascual
 in the County of Los Angeles State of Calif^a
 to be conveyed by J. S. Griffin & B. D. Wilson Esq^s
 to
 D. Raab
 Surveyed on request of said Raab on the
 16th July 1870 by H. M. Johnston. Var. 14° 45' E.
 True Courses
 Scale 5.00 chs to 1 inch



Recorded Jan^y. 26th A.D. 1872, at 2¹⁵ P.M.
 at request of Antonia Raab.

Condy