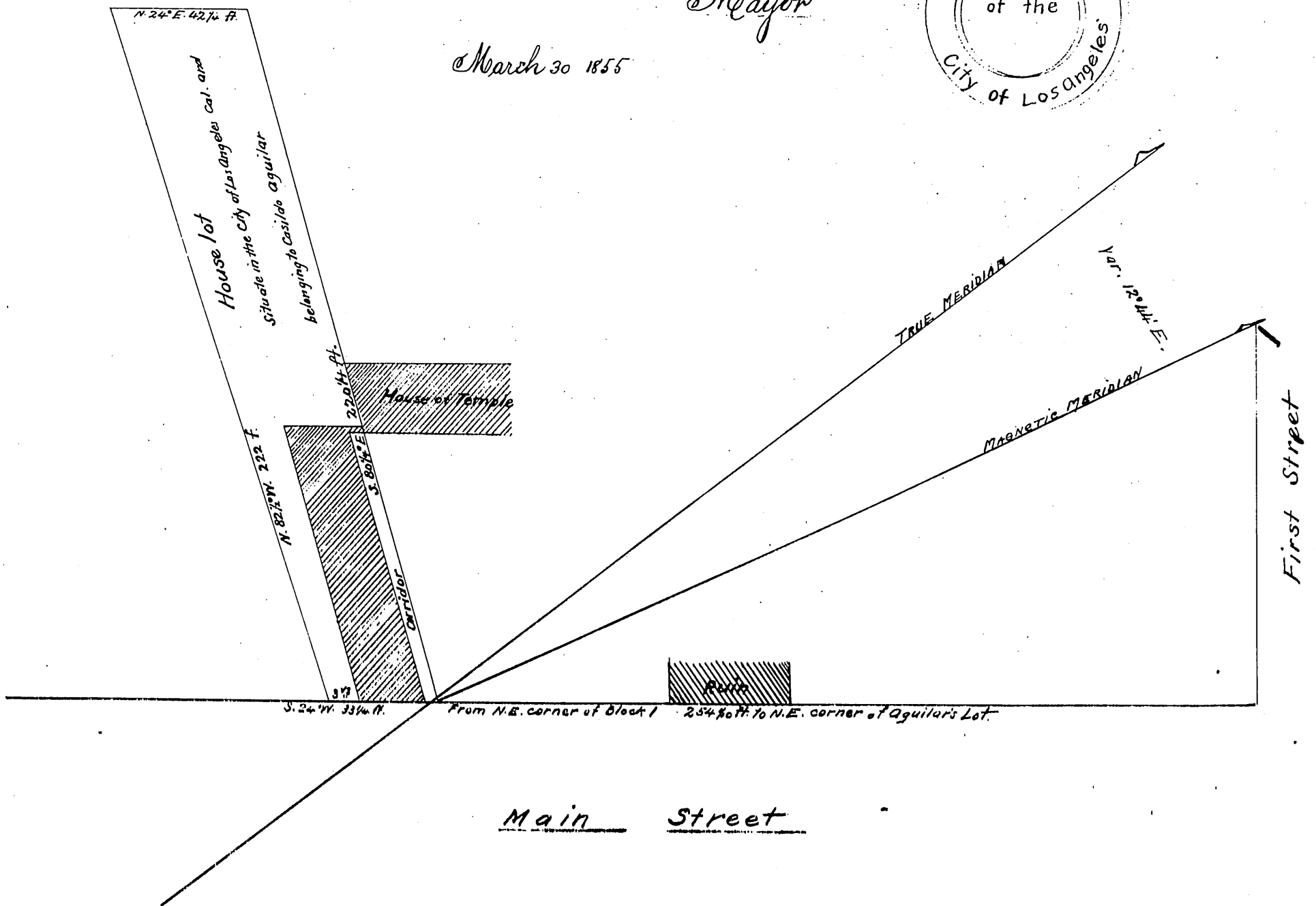
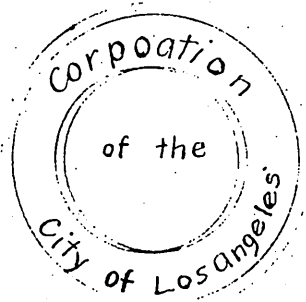


I herewith certify the above to be a correct copy of a plat of a survey executed by me March 7th 1855 on the request of Casilde Aguilar City of Los Angeles March 9th 1855
Geo. Hansen, Deputy County Surveyor of Los Angeles County.

Recorded Dec. 4th 1873, at 8⁵⁵ AM.
at request of Casilde Aguilar

Stephen C. Foster.
Mayor

March 30 1855



Scale of 1/4 inch to the foot
The Courses are magnetic
Surveyed March 7th 1855 by G. Hansen
Deputy County Surveyor of Los Angeles County Cal.

Casilde
Aguilar