

DM 31-97

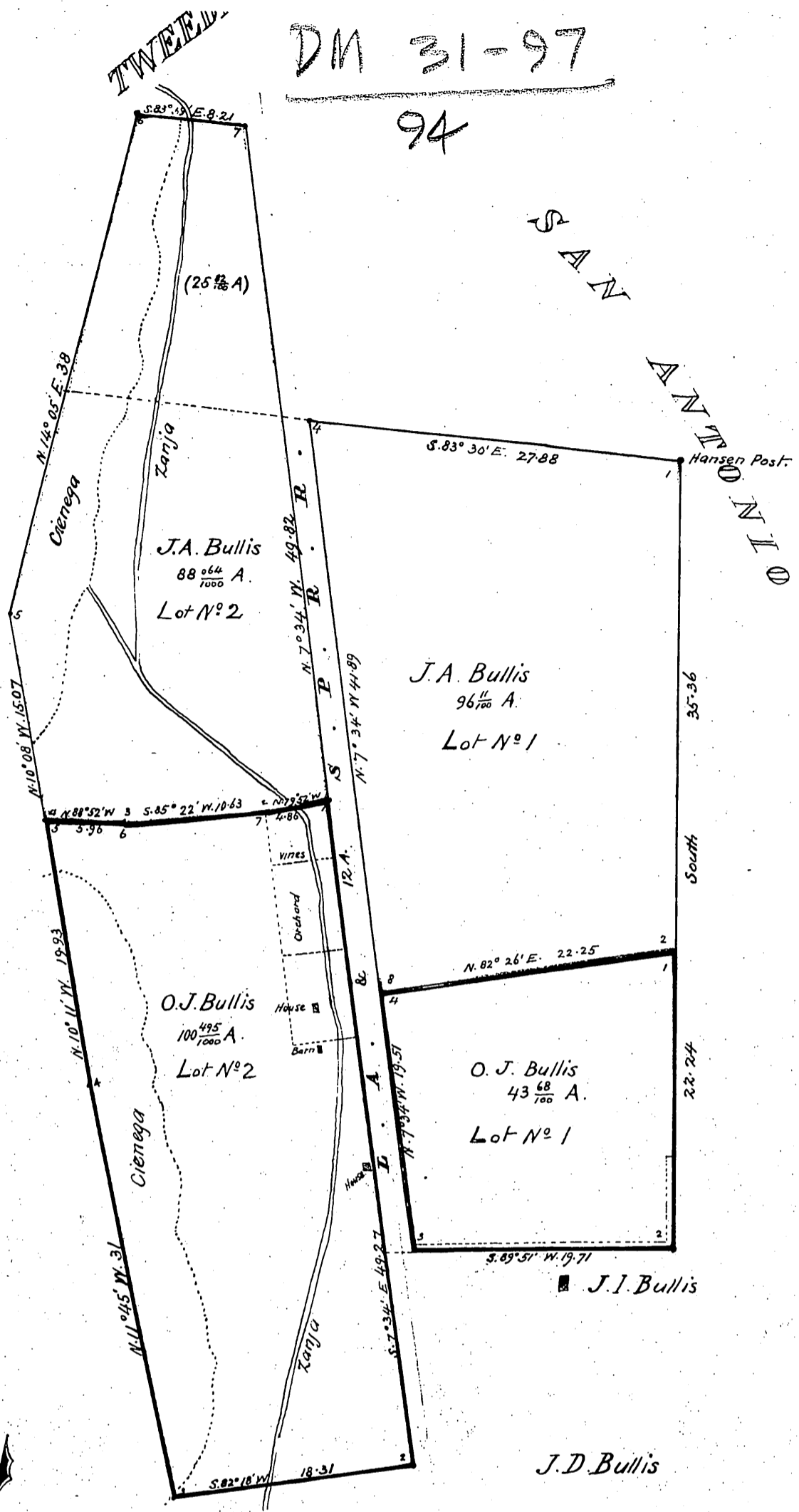
94

TAJUTA RANCHO

SAN

ANTONIO

RANCHO



MAP

SHOWING EXTERIOR BOUNDARIES AND PARTITION OF THE
TRACT OF LAND ON THE
SAN ANTONIO RANCHO

LOS ANGELES CO. CAL.
sold by

J. I. BULLIS

by deed dated Apr. 2^d 1873, as
agreed upon and accepted by

JOHNA. & OMRI J. BULLIS

surveyed July 1874 by John Goldsworthy.
Scale
10chs = 1in.

Recorded September 12th A.D. 1874, at 4⁴⁵ P.M.

at request of Omri Bullis

*Completed
1874*