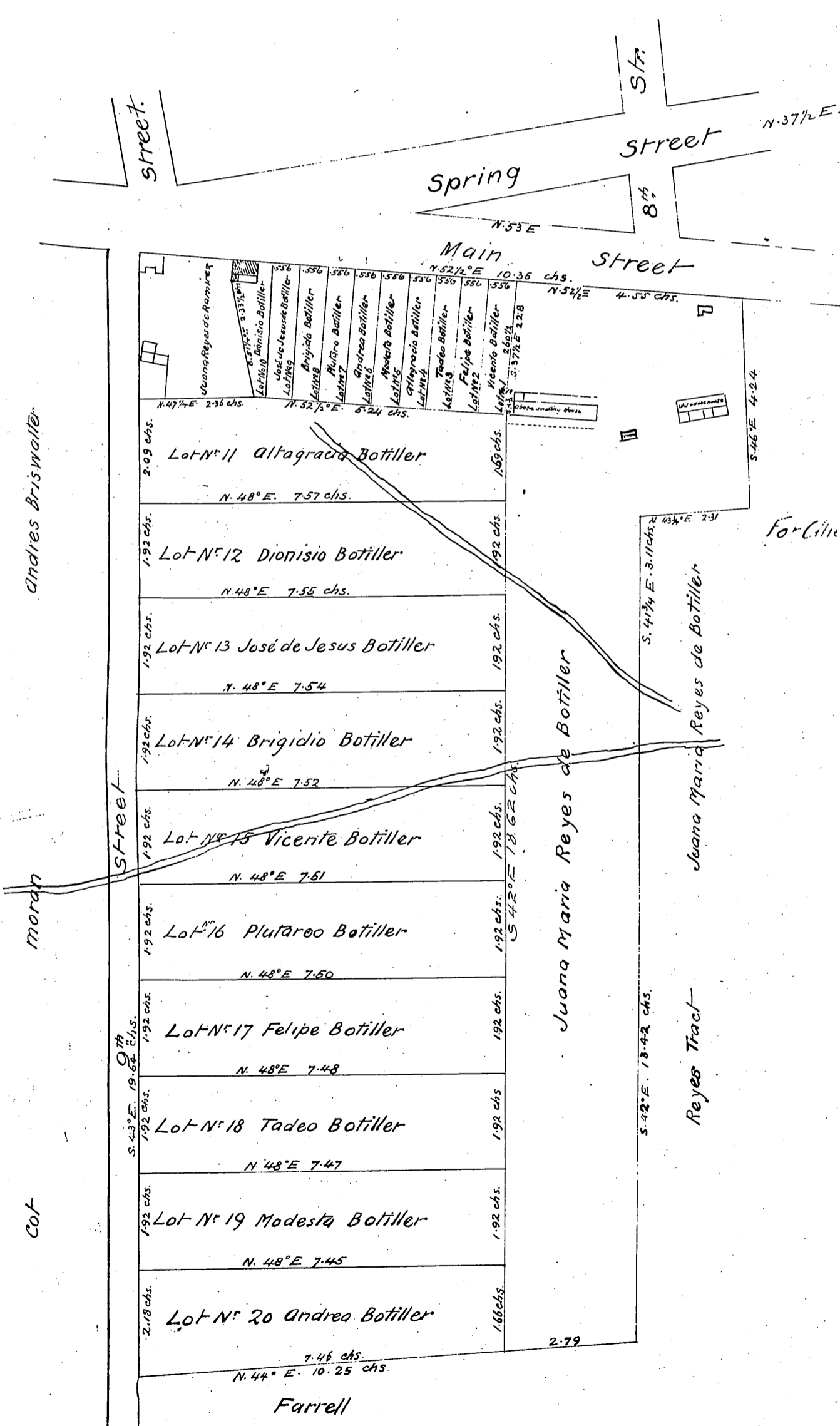


Tablings of the Botiller Tract Surveyed in March & April 1873 by Hansen & Seebold

St.	True Course	Distance	Correction				Corrected				Plotting Points				Area +	Area -								
			N	S	E	W	Lat. Dep.	N	S	E	W	Lat. Dep.	N	S			E	W						
1	S 52 1/2° W	10.35	6.30		8.21	+4	+2	6.34		8.23	-6.34	418.44	-8.23	543.18	8.23	52.178 251								
2	S 37 1/2° E	0.39 1/2	2.67		.31	.24		.31	.24	-6.65	438.90	-7.99	527.24	2.30	.0744									
3	S 51 1/2° E	2.33 1/2	154.11		1.46	1.82	+1	1.47	1.82	-8.12	535.98	-6.17	407.82	2.30	3.3810									
4	S 47 1/2° W	2.36	155.76		1.60		1.73	+1	1.61	1.78	-9.73	442.18	-7.90	521.40	2.39	3.8479								
5	S 43° E	19.64	1246.24		14.32	13.40	+7	-4	14.44	13.36	-24.17	1595.22	+5.46	360.36	14.02	202.4488								
6	N 44° E	10.25	676.50	7.37		7.42	-4	-2	7.33	7.10	-16.84	1111.44	+12.56	828.96	34.48	252.7384								
7	N 42° W	13.42	885.72	9.97		9.97	-5	+3	9.92		9.01	-6.92	456.72	+3.55	234.30	32.57	323.0944							
8	N 41° W	3.11	205.26	2.32		2.32	-1		2.31		2.07	-4.61	304.26	+1.48	97.68	21.49	49.6419							
9	N 43 1/2° E	2.31	152.46	1.69		1.58	-1		1.68	1.58	-2.93	193.38	+3.06	208.50	21.00	35.2800								
10	N 46° W	4.24	279.84	2.95		3.05	-2	+1	2.93		3.06	0.00			19.52	57.1936								
													68.41	24.30	24.04	24.16	24.04	.26	.12	24.17	24.10	24.10	717.9483	261.9303
																	2.61.9303							
																	2) 456.0180							
																	22.8009	acres						



MAP OF THE BOTILLER TRACT

On the East side of Main Street in the City & County of Los Angeles, State of California, showing the Partition made by CRISTOBAL AGUILAR appointed by a decree of the Probate Court of the County of Los Angeles State of California, of date March 3<sup>rd</sup> 1873, Sole Commissioner of Partition.

Surveyed by Hansen & Seebold in March & April 1873. True Courses, Var. 14° 45' E.

Scale 1 inch to 80 ft.

For City of Los Angeles - See C.T. 638

Tablings of the Tract allotted to Juana Maria Reyes de Botiller

St.	Course	Distance	Correction				Corrected				Area +	Area -	
			N	S	E	W	Lat. Dep.	N	S	E			W
1	S 52 1/2° W	4.55		2.76		3.61	+2	-1	2.78		360	5.60	10.0800
2	S 37 1/2° E	2.64 1/2		1.63		1.63	+1		1.63		1.63		3.4719
3	S 51 1/2° E	18.62		13.84		12.45	+8	+4	13.92		12.49		1575
4	N 44° E	2.79		2.01		1.94	-1	+1	2.00		2.00		30.19
5	N 42° W	13.42		9.97		9.97	-5	+3	9.91		8.95		23.19
6	N 41° W	3.11		2.32		2.31	-1		2.31		2.06		12.18
7	N 43 1/2° E	2.31		1.69		1.58	-1		1.68		1.58		28.1358
8	N 46° W	4.24		2.95		3.05	-2	+1	2.93		3.04		11.70
											367.9879	232.7192	
											232.7192		
											135.2660		
											2) 6.7834	acres	

Recorded July 29<sup>th</sup> A.D. 1875, at 4<sup>55</sup> P.M.  
at request of Dionisio Botiller.