

DM 42-409  
104

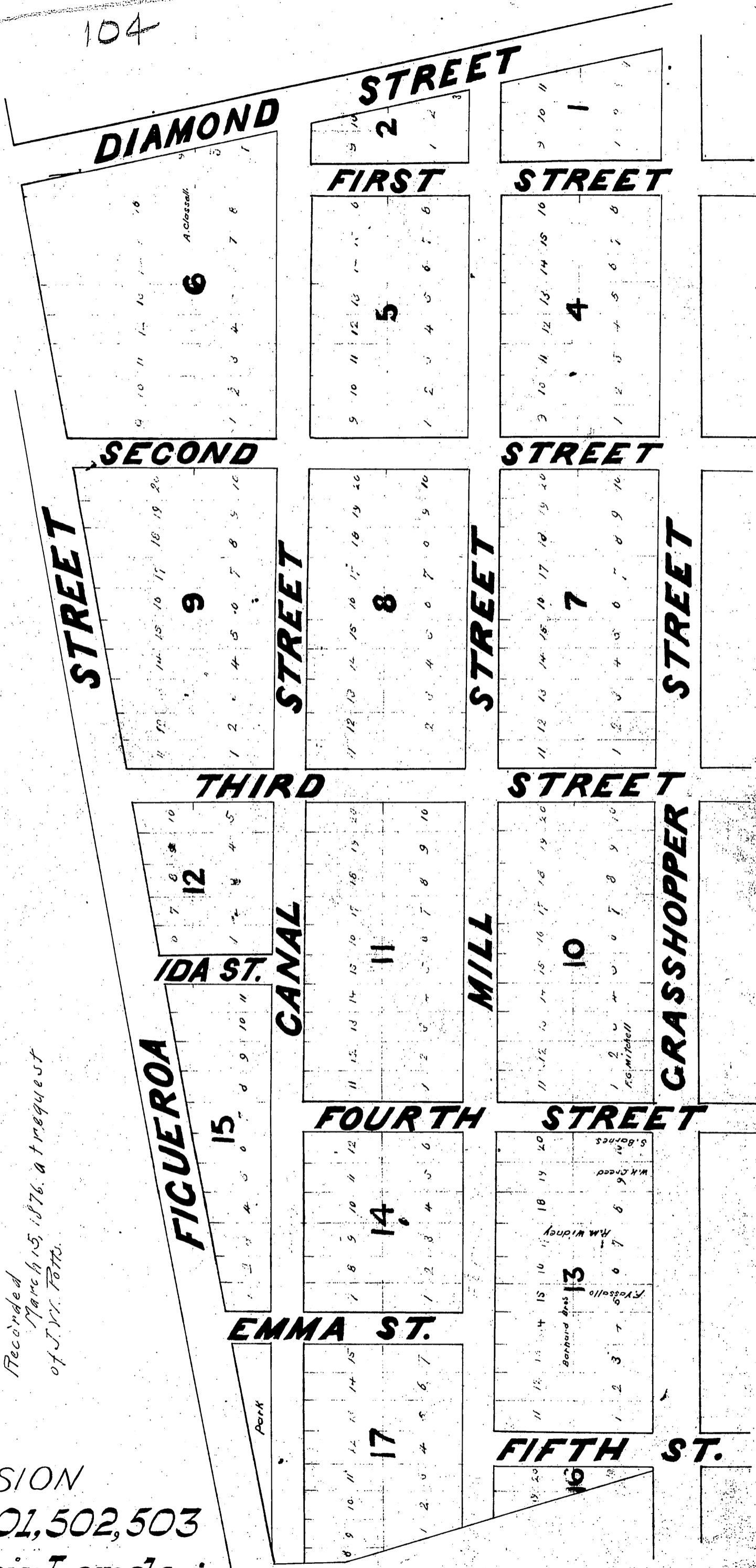
NOTE: ~  
 This Sub. also known as  
 "WOOLEN MILL TRACT" see Ord. 8236.  
 Co. Surveyor.  
 For Lot 11, Blk 17  
 For Lots 11 & 12 Blk 7  
 For Lot 12 & 13 Blk 7  
 For Lots 11 & 12 Blk 7  
 For Lot 11, Blk 17  
 Lot 13, Blk. 7 to L.A. City Sch. Dist. D:31-96 O.R. 225-237  
 " 14 " " " " " D:31-107 O.R. 181-329  
 For Lots 11 & 12 " " " " D:34-271 O.R. 1475-262  
 For Lot 12 & 13 Blk. 7 " " " " D:37-7 O.R. 2081-242  
 For Lots 11 & 12 Blk. 7 " " " " D:37-90 O.R. 2179-378  
 For Lot 11, Blk 17 " " " " D:40-249 O.R. 4860-199

Fifth St. (Emma St.) changed to Maryland St. Ord. 55380  
 Widening Third St. across Blks. 7 & 8 and opening a new street in Blk. 12 - C.F. 1363-1.  
 Widening 2nd St. to 90ft. - D:90-53, O.R. 12204-10, C.F. 1837.

The official Map of the City, entitled  
 "Map of the Reservoir and Vicinity"  
 dated Dec 3rd, 1870, to which reference  
 is made in said deeds, is made by  
 Wm Moore and is on file in the  
 Mayors Office.

Recorded  
 March 15, 1876, at request  
 of J.V. Fotts.

SUBDIVISION  
 of Lots 500, 501, 502, 503  
 of the Reservoir Lands in  
 LOS ANGELES CITY, CALIFORNIA.



Mill St changed to Fremont Ave Ord 22  
 Second St widening, D:11-52 D:3256-71 D:11-53 D:3153-31  
 Vacation of part of Diamond St Ord 6618 C.S. 3557, DEEDS. 42  
 Boylston " " 7139  
 " " " " 7139  
 " " " " 7236  
 " " " " 7260