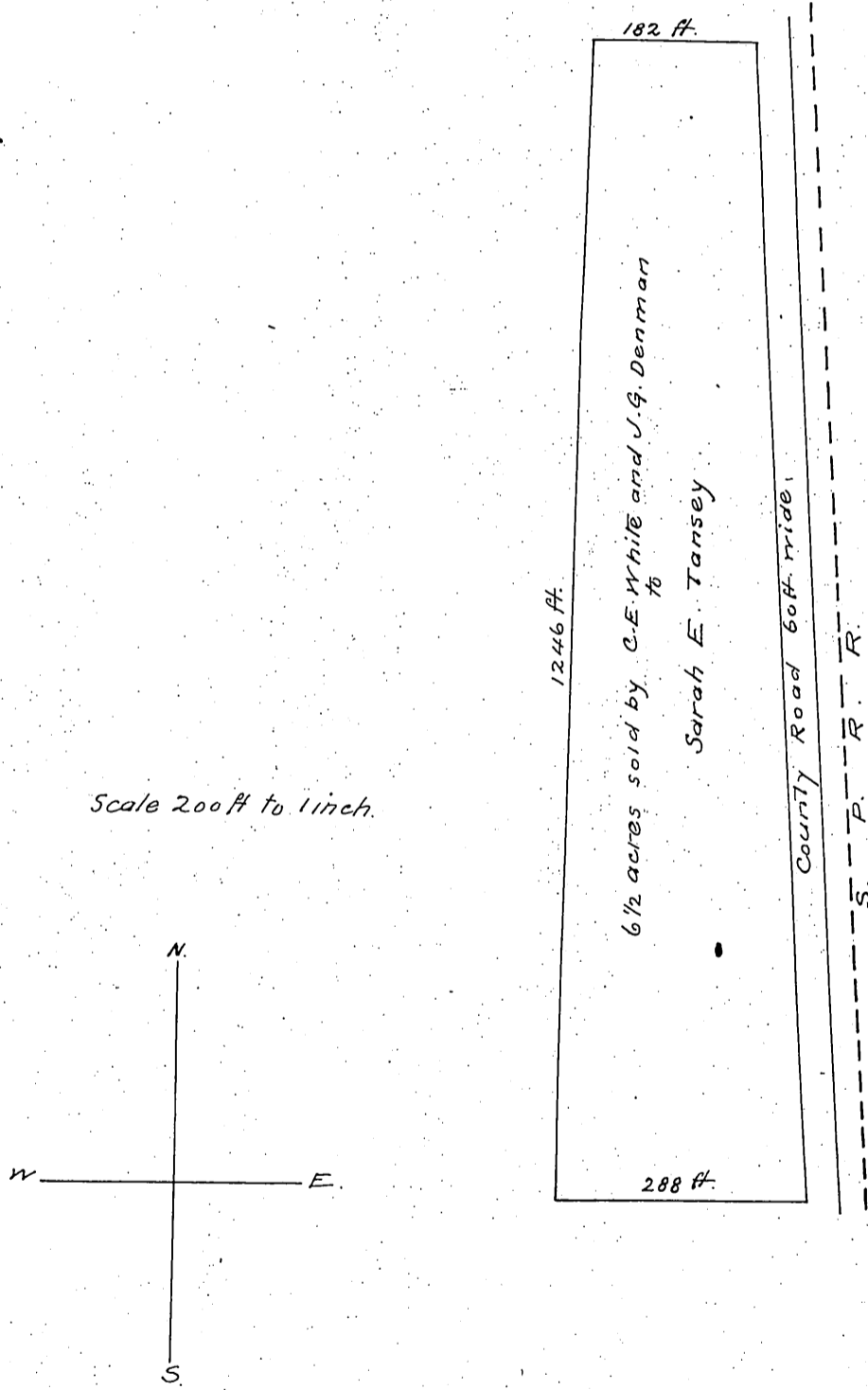


112

Map of a Tract of land in the San Antonio Rancho,  
Los Angeles Co. Cal, lying on the west side of the Los  
Angeles & San Pedro Railroad, and immediately join-  
ing the north west corner of the Tansey Tract in the  
Rancho Tojautā.



Recorded March 9<sup>th</sup> 1878, at 12<sup>28</sup> PM.

at request of E. F. Spence.

*Completed  
1878*