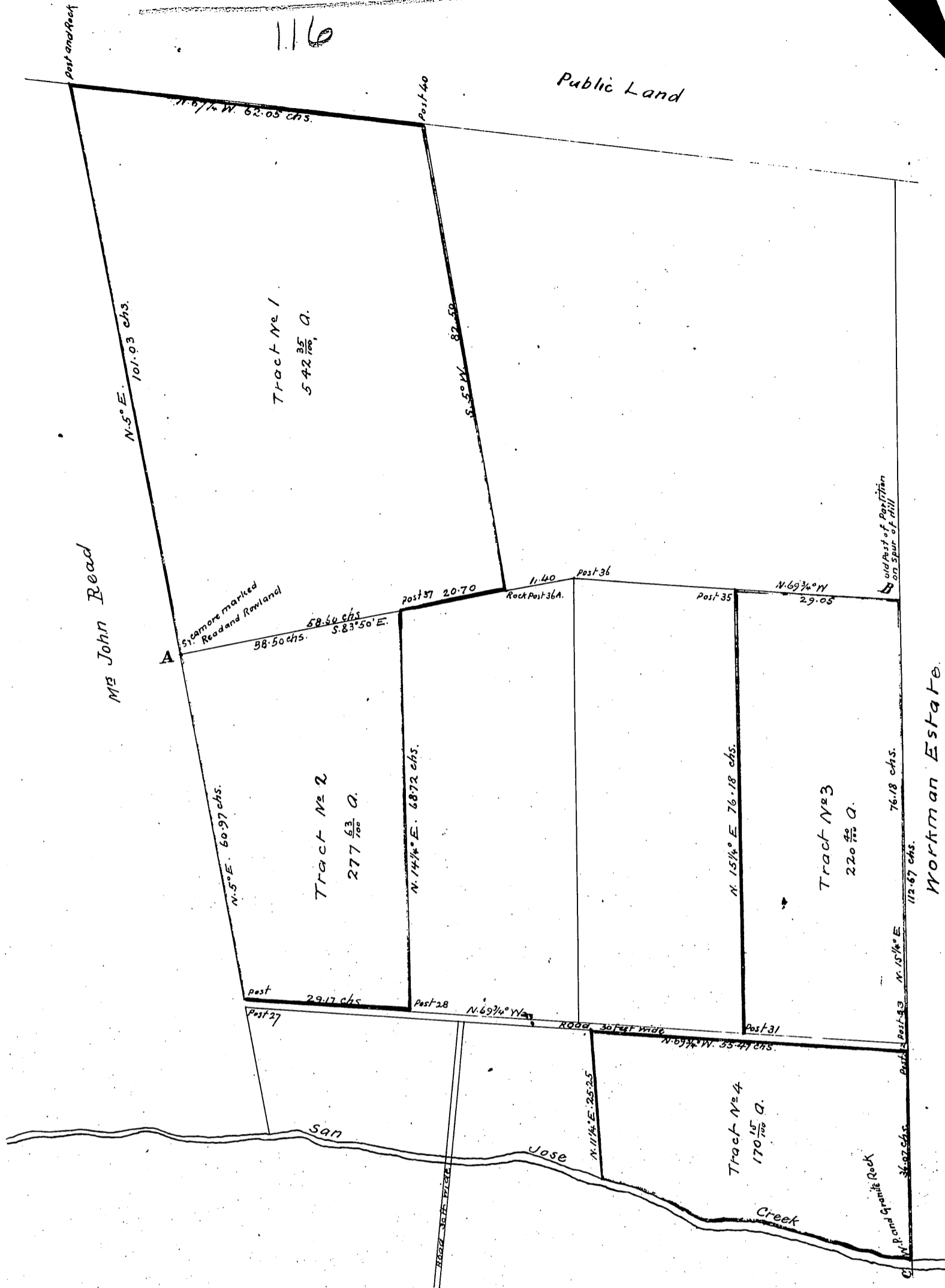
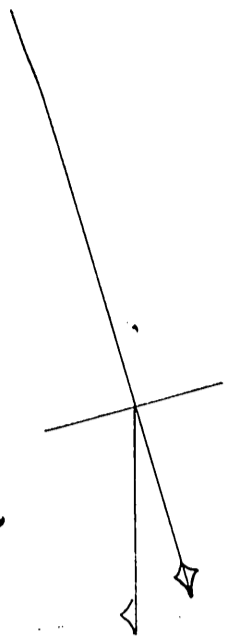


116



Victoria Rowlands land
south of Puente Creek.

scale 20 chs. to one inch

Var. $14^{\circ} 30' E.$
(True courses)

surveyed by John E. Jackson

in year 1879

Recorded March 17th 1880, at 11³⁰ AM.

at request of Albert Rowland

Sh- 39

Comp'd
1879