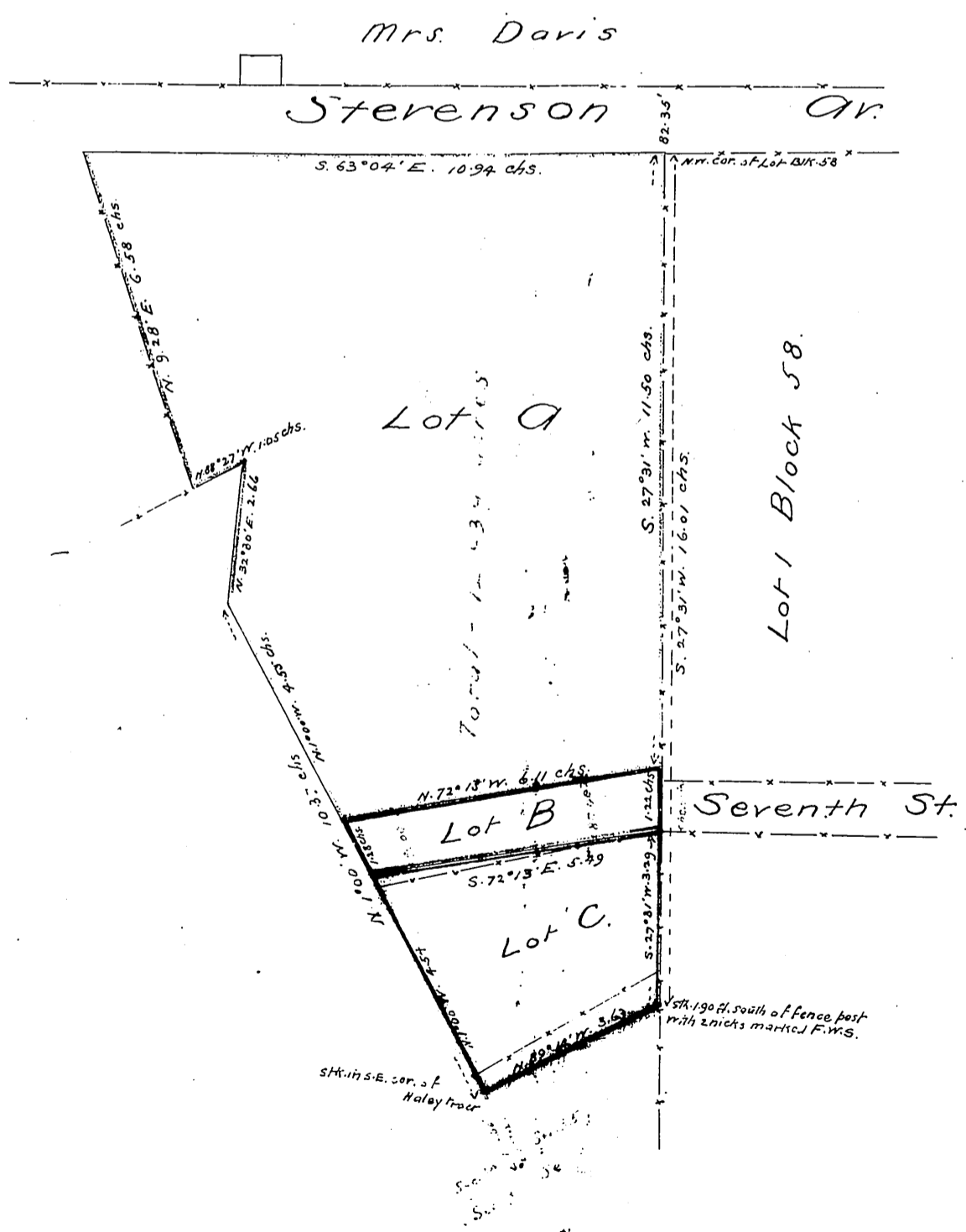


DM 155-91

Note		
Lot A	contains	10.527 acres
" B	"	0.702 "
" C	"	1.710 "
		Total 12.939

Scale: 3.00^{chs}/₁₀ one inch

City of Los Angeles to Francisca W. de Shepard



Recorded March 8, 1886, at 4:57 P.M.

at request of Grantee (FRANCISCA W. DE SHEPHERD)

Copyd
1887