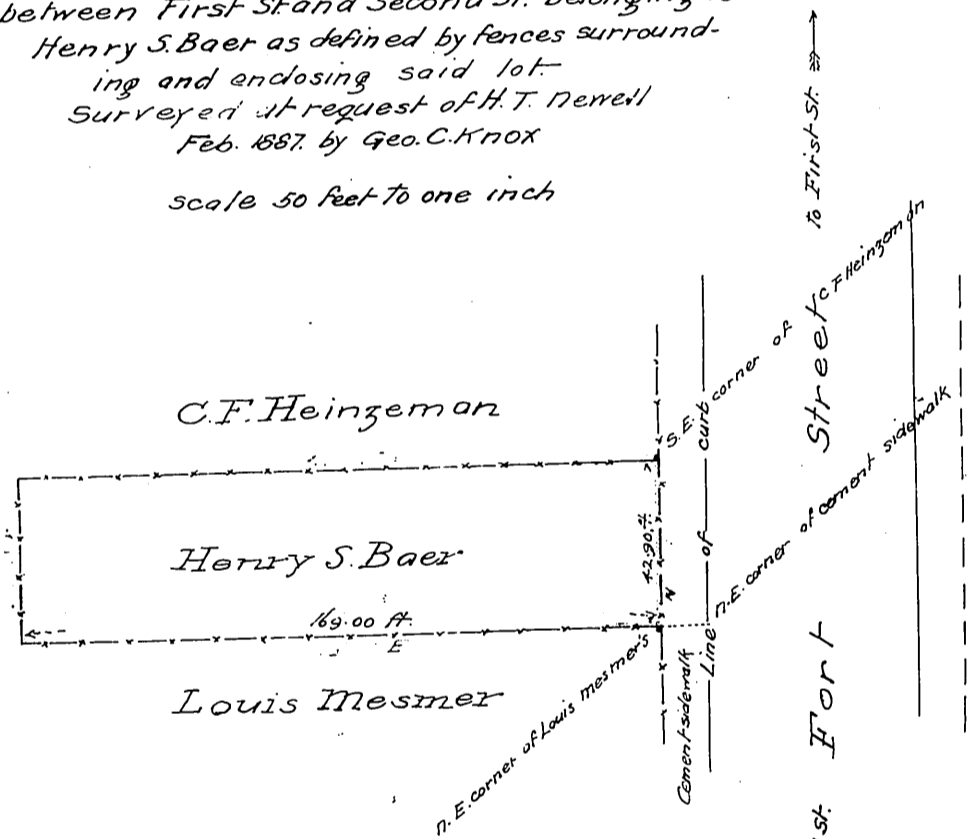


Plat
 Showing boundaries of
 Lot fronting on West side of Fort St.
 between First and Second St. belonging to
 Henry S. Baer as defined by fences surround-
 ing and enclosing said lot.
 Surveyed at request of H. T. Newell
 Feb. 1887. by Geo. C. Knox
 scale 50 feet to one inch



Note.
 S.E. corner of C.F. Heingeman as shown on Plat herein is 200.00 feet southerly from N.E. corner of Mancho's brick building at S.W. corner of intersection of First St. and Fort St.
 N.E. corner of Louis Mesmer is 242.90 feet southerly from said N.E. corner of Mancho's brick building

Fences ———
 Corner of fence and post ———

Recorded Feb. 11th 1887, at 3²⁶ P.M.

at request of Frank Rader & Henry T. Newell.

Compd. Geo. C. Knox