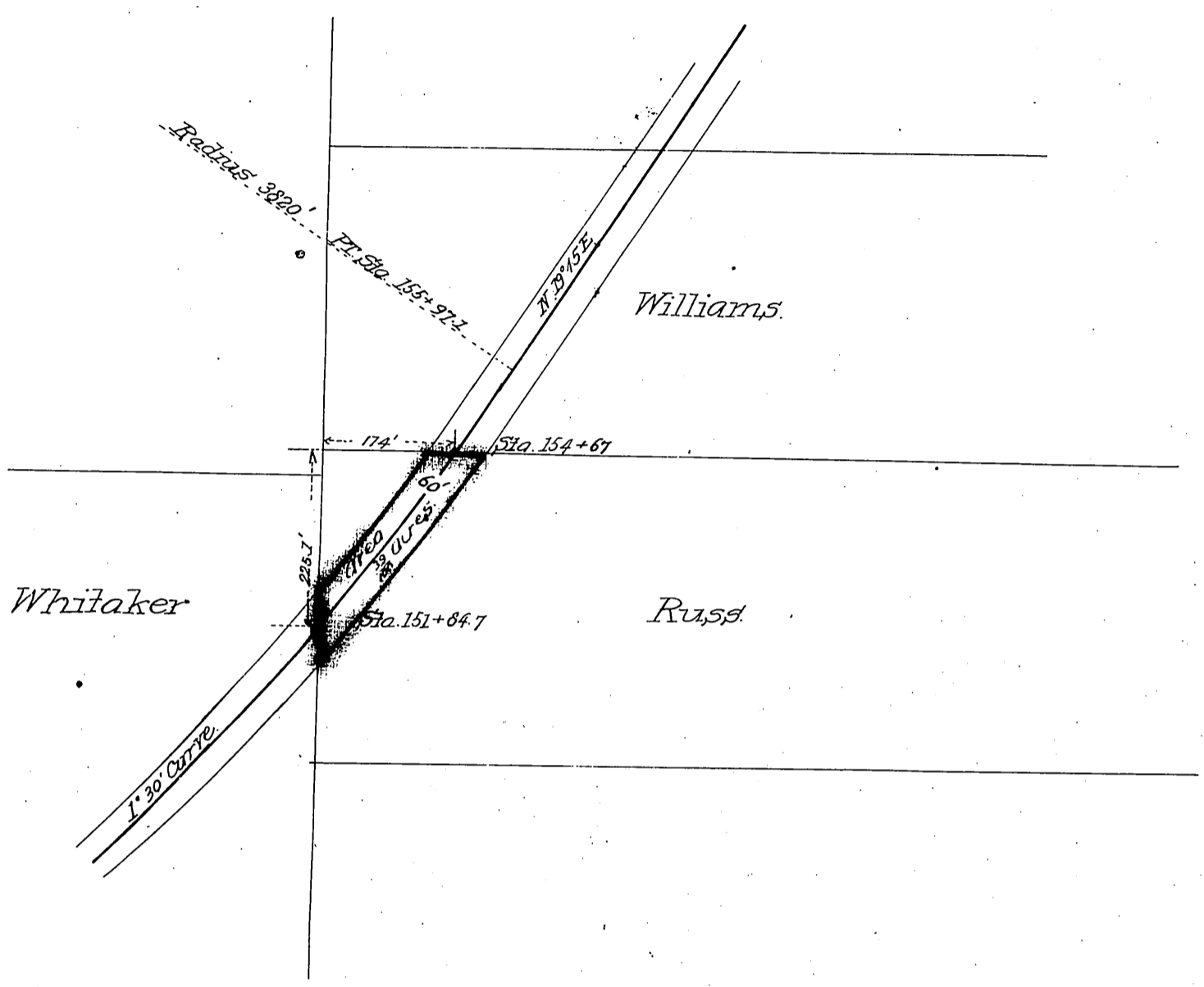


Exhibit A

Plat showing land of Mr Russ in Rancho San Pasqual through which the Raymond cut-off (L.A. & S.G.V. Ry.) passes C.C. Ry. Scale 200 ft. to an inch. Nov. 17th 87.



Recorded Nov 28th 1887, at 4²⁰ P.M.

at request of W. Dunn.

Wm. Dunn
1887