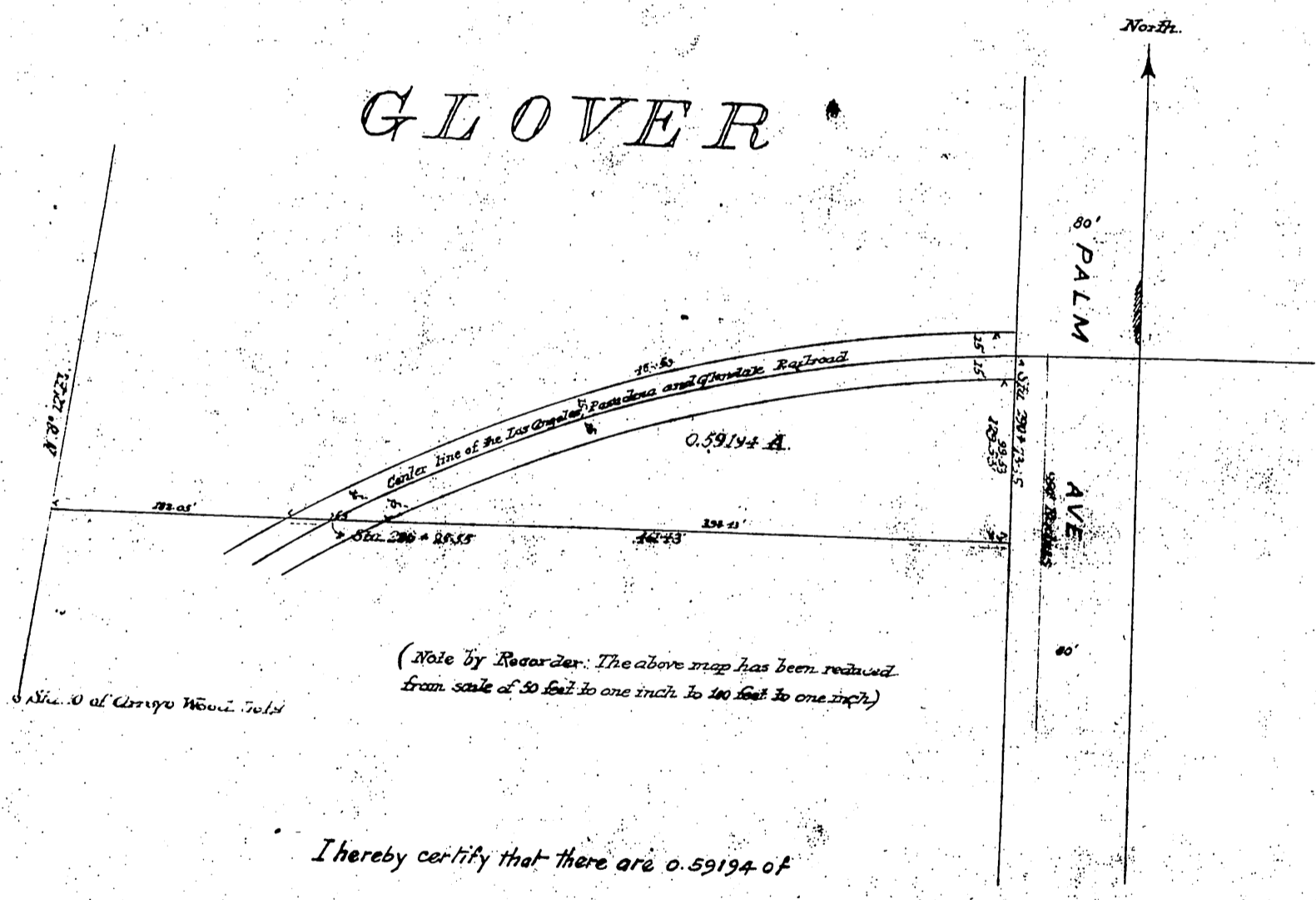


GLOVER



I hereby certify that there are 0.59194 of
 an acre of ground lying south of the 30
 feet right-of-way, as indicated by
 the curved lines.

W. F. M. Clure, Engineer

Recorded Oct. 11, 1899, at 12 P.M.
 at request of Grantee (L.A. - P. & O. Ry. Co.)

Comp'd
 W.F.M.