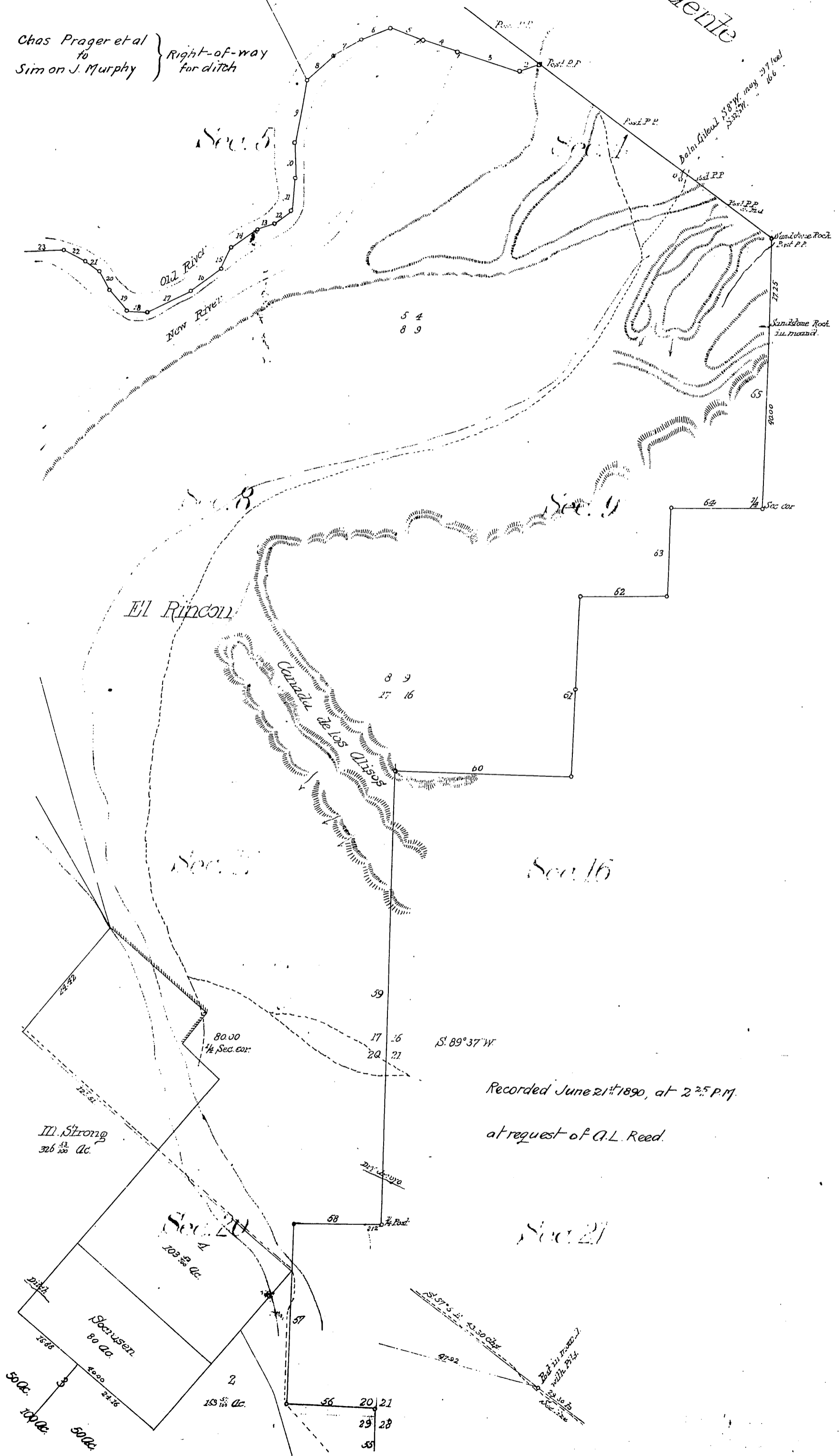


107  
La Puente

Potrero de El Lago

Chas Prager et al  
to  
Simon J. Murphy } Right-of-way  
for ditch



Recorded June 21<sup>st</sup> 1890, at 2<sup>25</sup> P.M.  
at request of A.L. Reed

M. Strong  
306 <sup>13</sup>/<sub>100</sub> Ac.

Stearnsen  
80 Ac.  
50 Ac.  
10 Ac.  
50 Ac.

Prager  
6/27/90