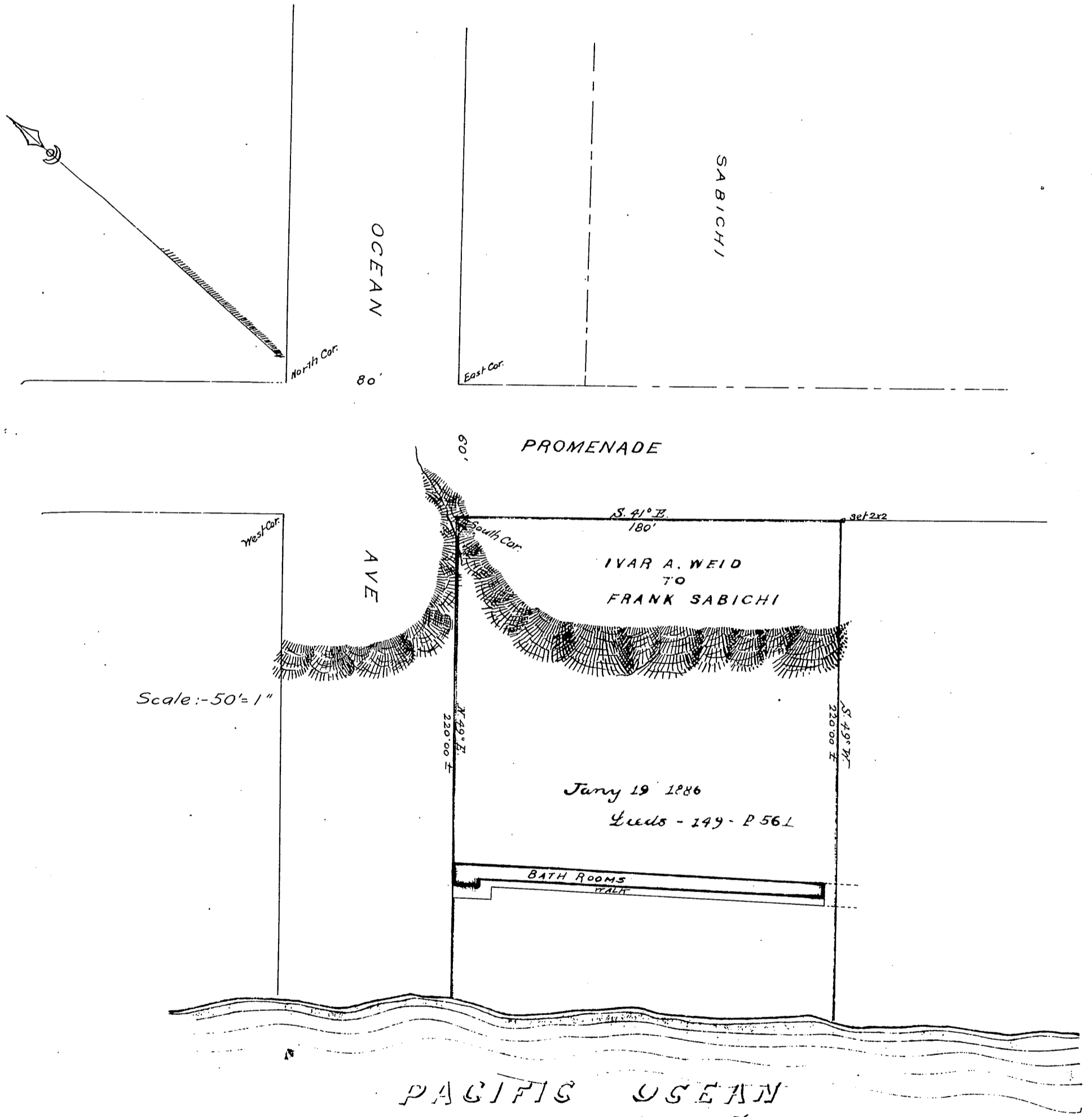


Plat

Showing The Westerly 180 ft. fronting on Promenade, of Block bounded by Ocean Ave. - Pacific St. - Promenade and the Pacific Ocean; Santa Monica, Cal. and being the land intended to be conveyed to Frank Sabichi by Ivar A. Weid, by deed dated Jan'y 19<sup>th</sup> 1886, and recorded in Book 149 of Deeds Page 561, Mis. Rec's L.A. Co.

Surveyed by J. H. Dockweiler Aug. 1<sup>st</sup> 1890



PACIFIC OCEAN

Recorded Nov 11<sup>th</sup> 1890, at 1:26 P.M.

at request of W. F. & Co.

Campbell  
1890