

702-125

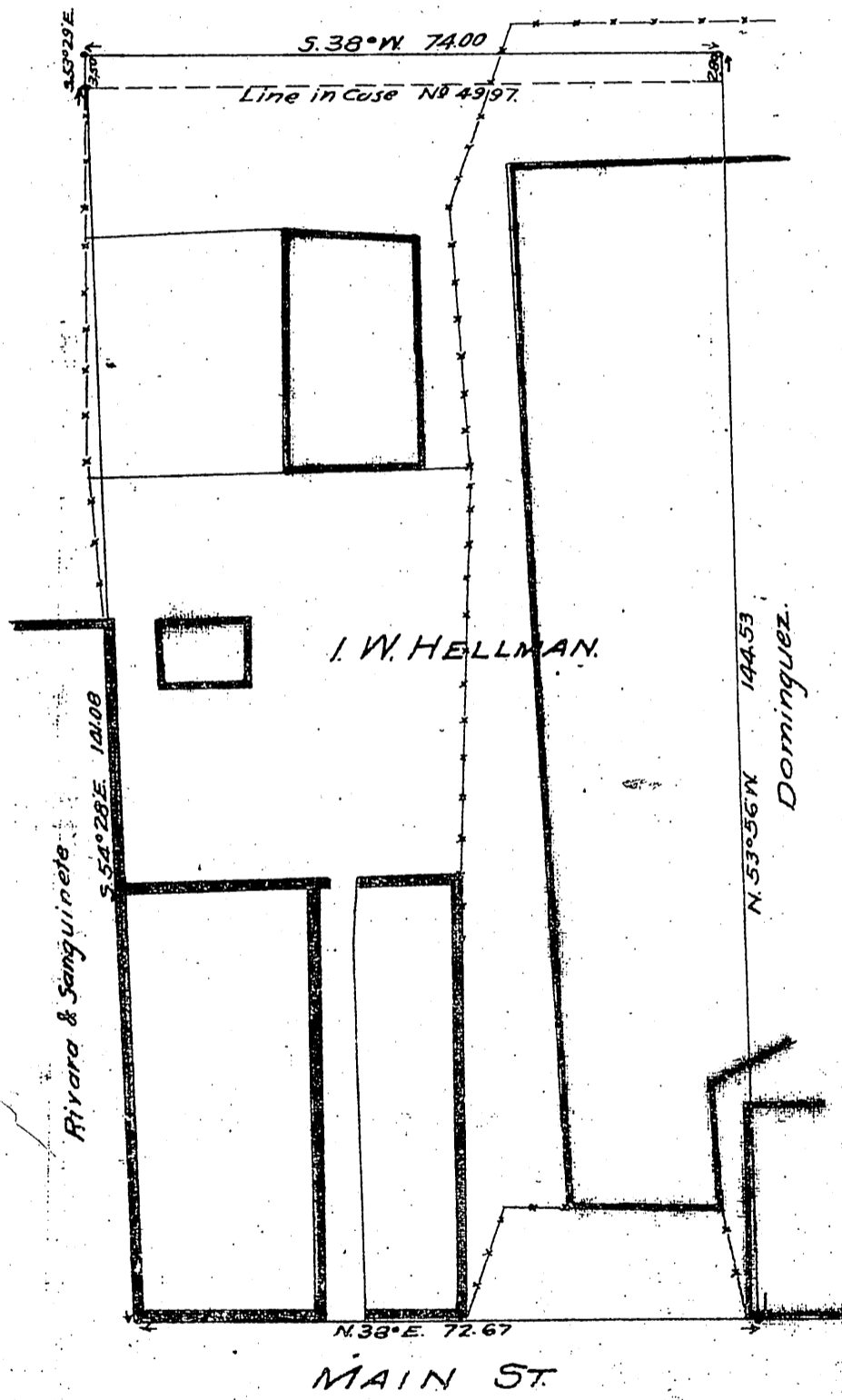
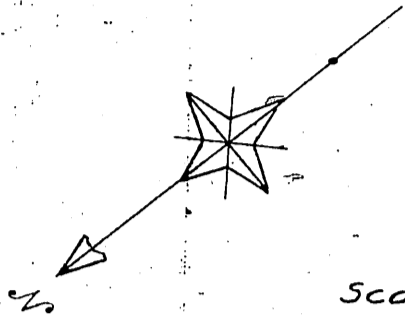
5

2

I. W. HELLMAN
 vs.
 ANDREW H. DENKER ETAL.
 Referee's Map in Partition
 TRACT No 2.
 Awarded to
 I. W. HELLMAN.

Located by
 E.T. Wright
 Feb. 1891.

Scale: 20 feet to 1 inch.



(Case No 14462)

D. 702