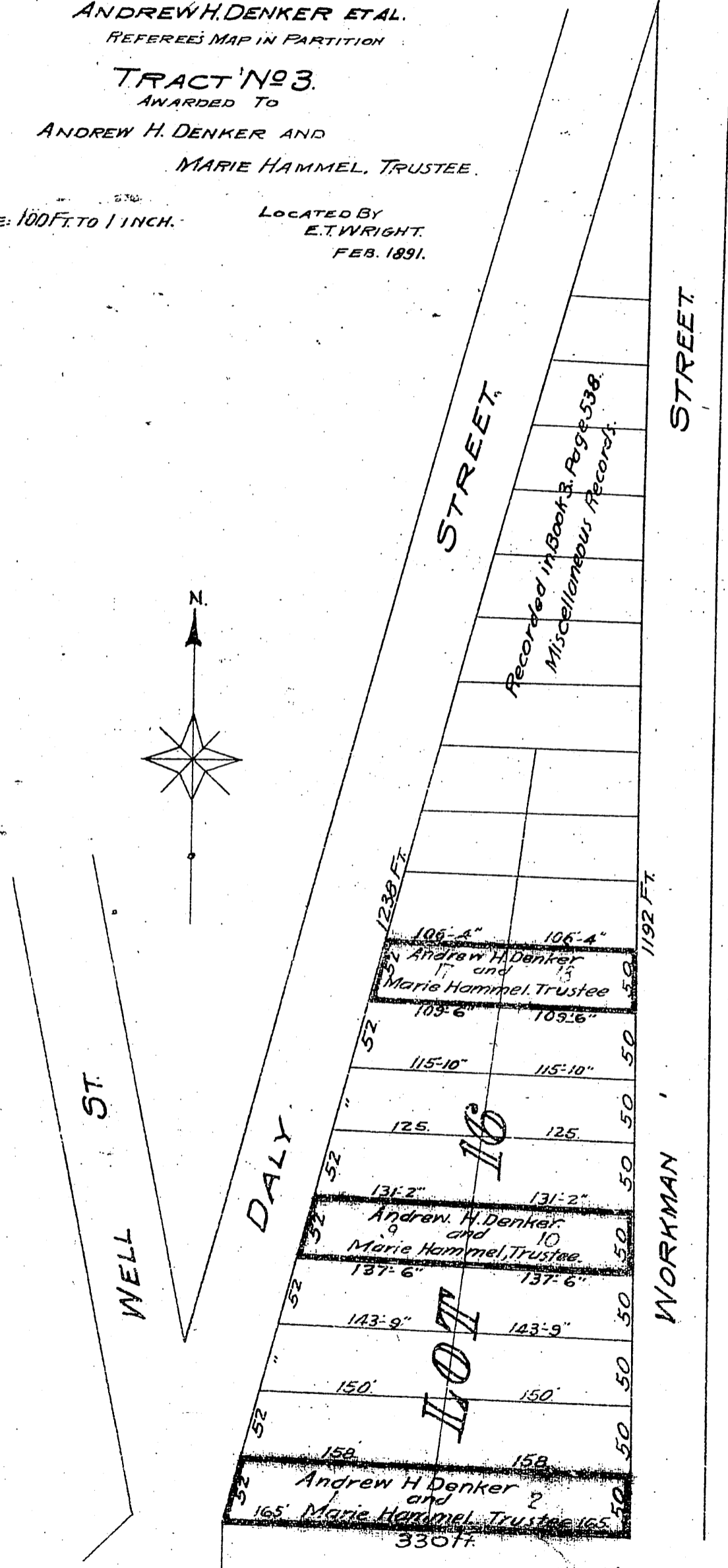
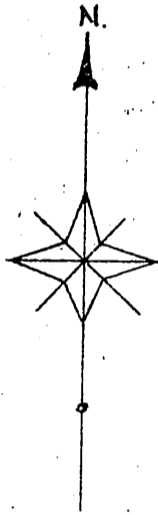


I. W. HELLMAN
vs.
ANDREW H. DENKER ET AL.
REFEREE'S MAP IN PARTITION

TRACT NO 3.
AWARDED TO
ANDREW H. DENKER AND
MARIE HAMMEL, TRUSTEE.

SCALE: 100 FT. TO 1 INCH.

LOCATED BY
E. T. WRIGHT.
FEB. 1891.



(Case No 14482)

7 GMP KMD.