

DM 702-129

6

129

I. W. HELLMAN

vs.

ANDREW H DENKER ET AL.

REFEREE'S MAP IN PARTITION.

TRACT No 4.

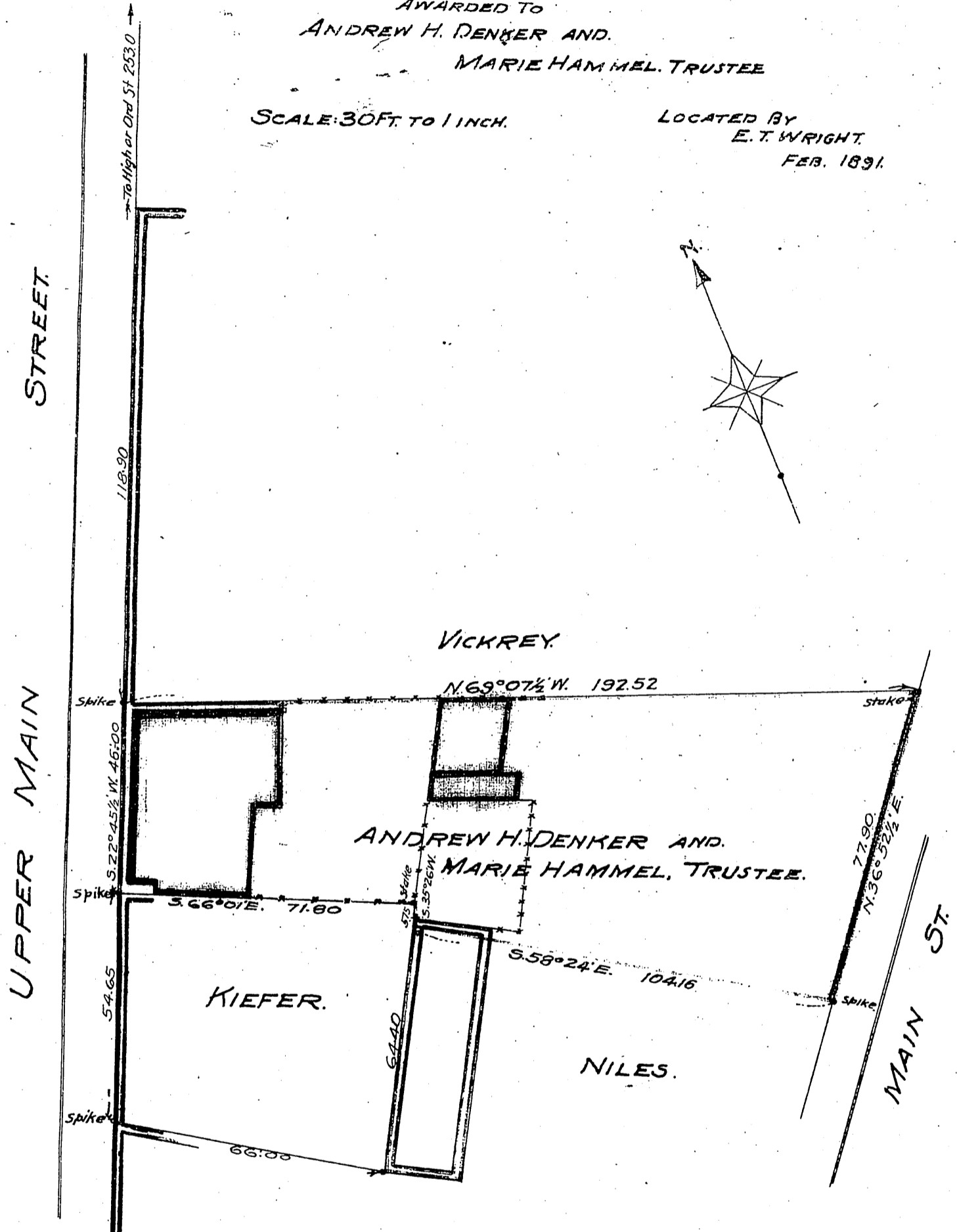
AWARDED TO

ANDREW H. DENKER AND

MARIE HAMMEL, TRUSTEE

SCALE: 30 FT. TO 1 INCH.

LOCATED BY  
E. T. WRIGHT  
FEB. 1891.



(Case No. 14482)

Comp. K.M.D.

D. 702