

120 B 241
120 B 245
123 B 245
123 B 237

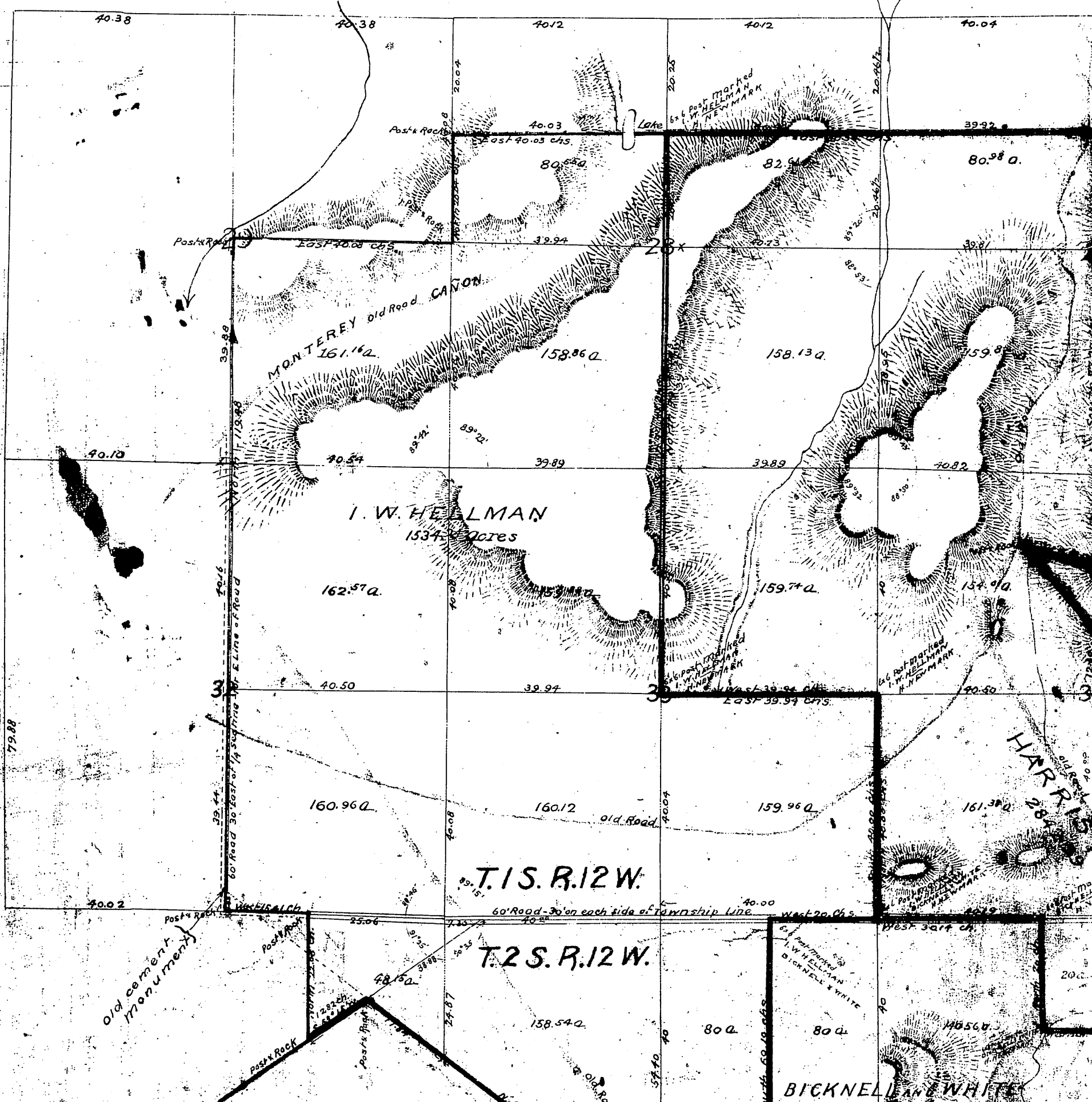
A Map of a Tract of Land, known as the REPETTO RANCHO Los Angeles Co. Cal. — showing exterior limits of said Rancho as well as the subdivisions thereof by foregoing conveyance, conveyed to each of the parties thereto.

SCALE 20 CHAINS TO 1 IN.

Surveyed Oct. 1891 = TRUE COURSES VAR. 14° 45' E.

John E. Jackson

BATZ AND GARVEY



Par. Sec. 4 for Margaret Ave. E: 9-43, O.R. 13837-294
 Par. Sec. 4 for Sadler St. E: 9-43, O.R. 13821-355
 Gerhart
 Eagle

Reserved
 For Roads See D: 24-37

Par. Sec. 33 and 34 D: 25-202 O.R. 6787-266
 Par. Sec. 33 and 34 D: 56-10, O.R. 6097-16
 Par. to City of Monterey Park, D: 56-13, O.R. 6069-135
 Par. for Garfield Ave. D: 62-101, O.R. 7268-92
 Par. Sec. 4 for Drainage Easement D: 71-289, O.R. 7426-188
 Par. for Beverly Blvd. D: 72-200 O.R. 8104-359
 Par. quitclaimed by City of Montebello. D: 72-203 O.R. 7480-400
 Par. for Hendricks St. D: 72-229 O.R. 8276-1
 Par. Sec. 51 for Drainage easement D: 76-723, O.R. 9337-302
 Widen Garfield Ave D: 77-148, C.F. 1550
 Par. for Third St. D: 73-217, O.R. 9789-200
 Beverly Blvd. Woods Ave. D: 78-111, O.R. 9335-353
 Third St. D: 80-207 O.R. 10003-133
 D: 80-270, O.R. 10125-274
 D: 80-272, O.R. 10119-306
 D: 80-272, O.R. 10122-299
 D: 80-278, O.R. 10201-54
 D: 82-1, O.R. 10281-83
 D: 82-1, O.R. 10193-307

Par. Sec. 32 for Storm Drain E: 52-61, O.R. 18780-201
 Par. Sec. 33 for Third St. D: 82-2, O.R. 10303-22
 Par. Sec. 33 D: 82-2, O.R. 10451-337

LAGUNA RANCHO
 T. 1 S. R. 12 W.
 T. 2 S. R. 12 W.
 SH: 36, A: 720-812