

TABLE OF COURSES  
AND  
DISTANCES  
I. W. HELLMAN

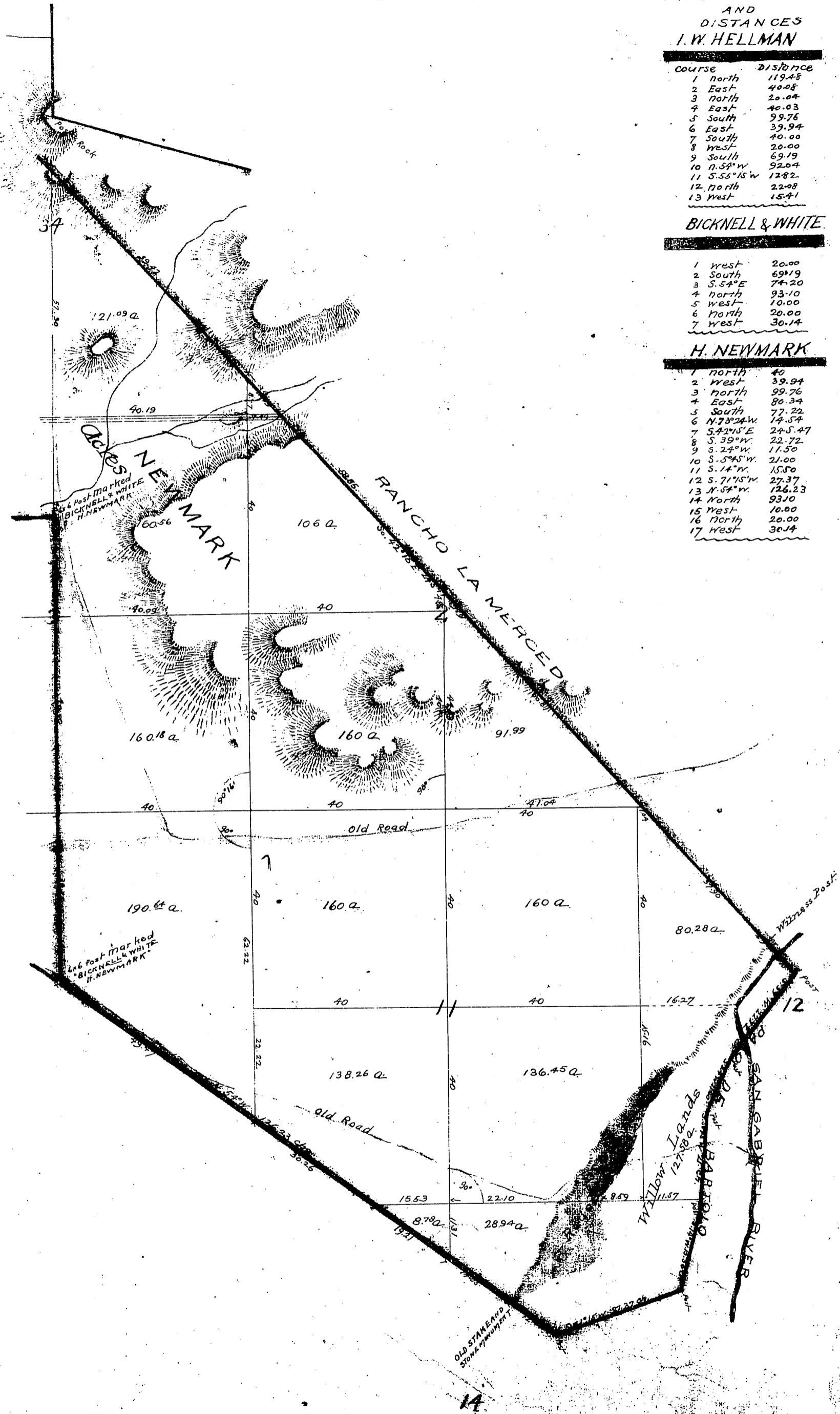
Course	Distance
1 North	119.48
2 East	40.08
3 North	20.04
4 East	40.03
5 South	99.76
6 East	39.94
7 South	40.00
8 West	20.00
9 South	69.19
10 N. 54° W	92.64
11 S. 55° 15' W	12.82
12 North	22.08
13 West	15.41

BICKNELL & WHITE

1 West	20.00
2 South	69.19
3 S. 54° E	74.20
4 North	93.10
5 West	10.00
6 North	20.00
7 West	30.14

H. NEWMARK

1 North	40
2 West	39.94
3 North	99.76
4 East	80.34
5 South	77.22
6 N. 73° 24' W	14.54
7 S. 42° 15' E	24.547
8 S. 39° W	22.72
9 S. 24° W	11.50
10 S. 54° W	21.00
11 S. 14° N	15.50
12 S. 71° 15' W	27.37
13 N. 54° W	126.23
14 North	93.10
15 West	10.00
16 North	20.00
17 West	30.14



Recorded Nov. 6<sup>th</sup> 1891, at 12<sup>o</sup> P.M.  
at request of J. A. Graves.

Sheet 36 A-720