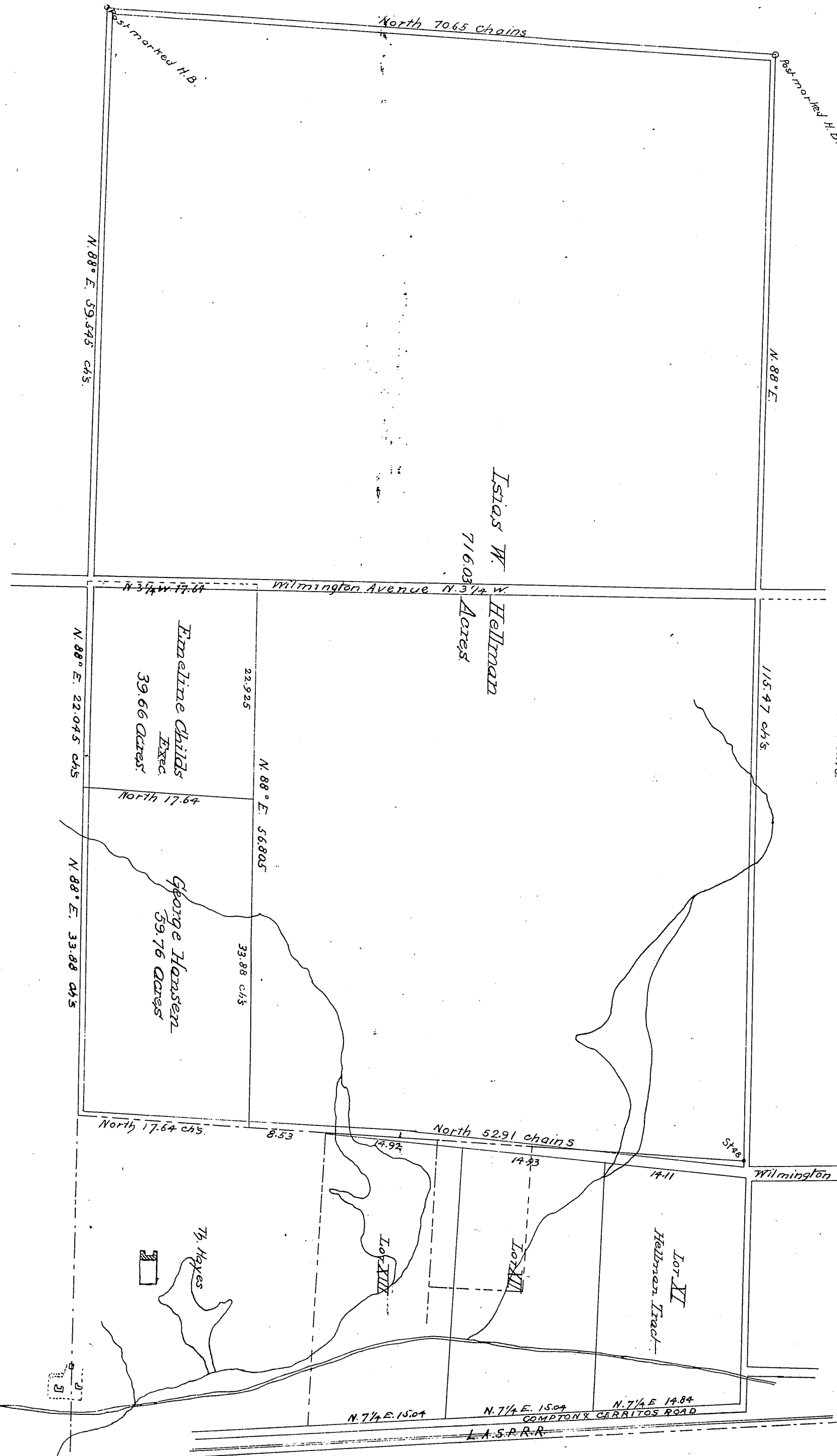


Map of Lands in the Rancho San Pedro in Los Angeles County Cal., Partitioned in Case No. 15,697 in Superior Court of Los Angeles County, State of California, with adjoining Lands of I. W. Hellman. Scale of one inch to 10 chains.

Recorded Dec. 28th 1891, at 4:02 PM  
at request of A. J. Graves.



Isias W.  
716.03  
Acres  
Hellman

Emeline Childs  
Exec.  
39.66 Acres

George Hansen  
59.76 Acres

Lot XII

Lot XIII

Lot XII  
Hellman Tract

Th. Hayes

Comp  
1891