

DM 779-58

158

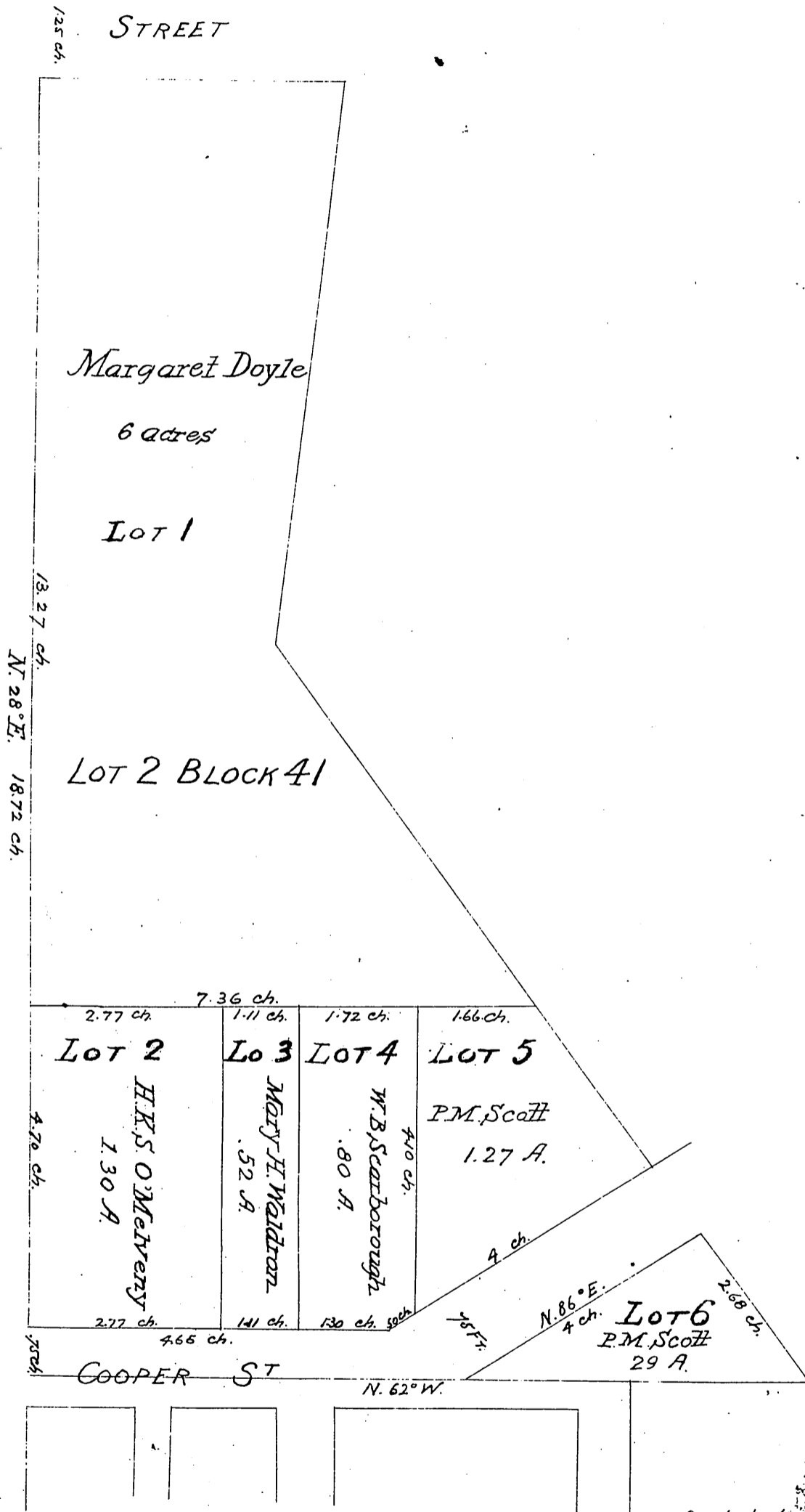
49

MAP OF THE DOYLE TRACT

Being a part of Lot 2, Block 41 CANAL & RESERVOIR LANDS Partitioned under Order of Superior Court.

Courses, True Meridian Scale 2 Ch. to 1 In. Surveyed by W<sup>m</sup> Moore.

"A"



Docketed March 21 1892  
Entered March 22 1892  
Book 36 Page 69  
By R. A. Marshall  
Deputy Clerk.

Deed w/ly 50 ft Lot 2 See D. 14-162 D. 3523-102 Sargent Place.  
Cooper St changed to Scott Ave. Gra 1836.3

Recorded March 23<sup>d</sup> 1892, at 10<sup>45</sup> AM.  
at request of H.K.S. O'Melveny.

Compd  
W.M.