

# Map

OF

S.W. 1/4 of N.E. 1/4 SEC 18

T.2 S. R.13 W. S.B.M.

surveyed by

WRIGHT & NICHOLSON

Scale 1 in = 20 chs

December, 1892

IN THE SUPERIOR COURT OF THE  
 COUNTY OF LOS ANGELES, STATE OF  
 CALIFORNIA, CASE NO. 15903.  
 William B. White, PLAINTIFF vs. G. Samisch,  
 Anna L.B. White, Anna L.B. White as admin-  
 istratrix of the Estate of Frank N. White  
 deceased, Lulu Belle White, a minor,  
 Jacob Brownstein, Lesser Hirshfeld, .  
 DEFENDENTS,

I, the undersigned, sole referee in par-  
 tion, certify that this map exemplifies  
 the division made by me and is the map  
 referred to in my report in the above  
 entitled cause

*F. I. Wright*

Los Angeles, Cal.

SOLE REFEREE

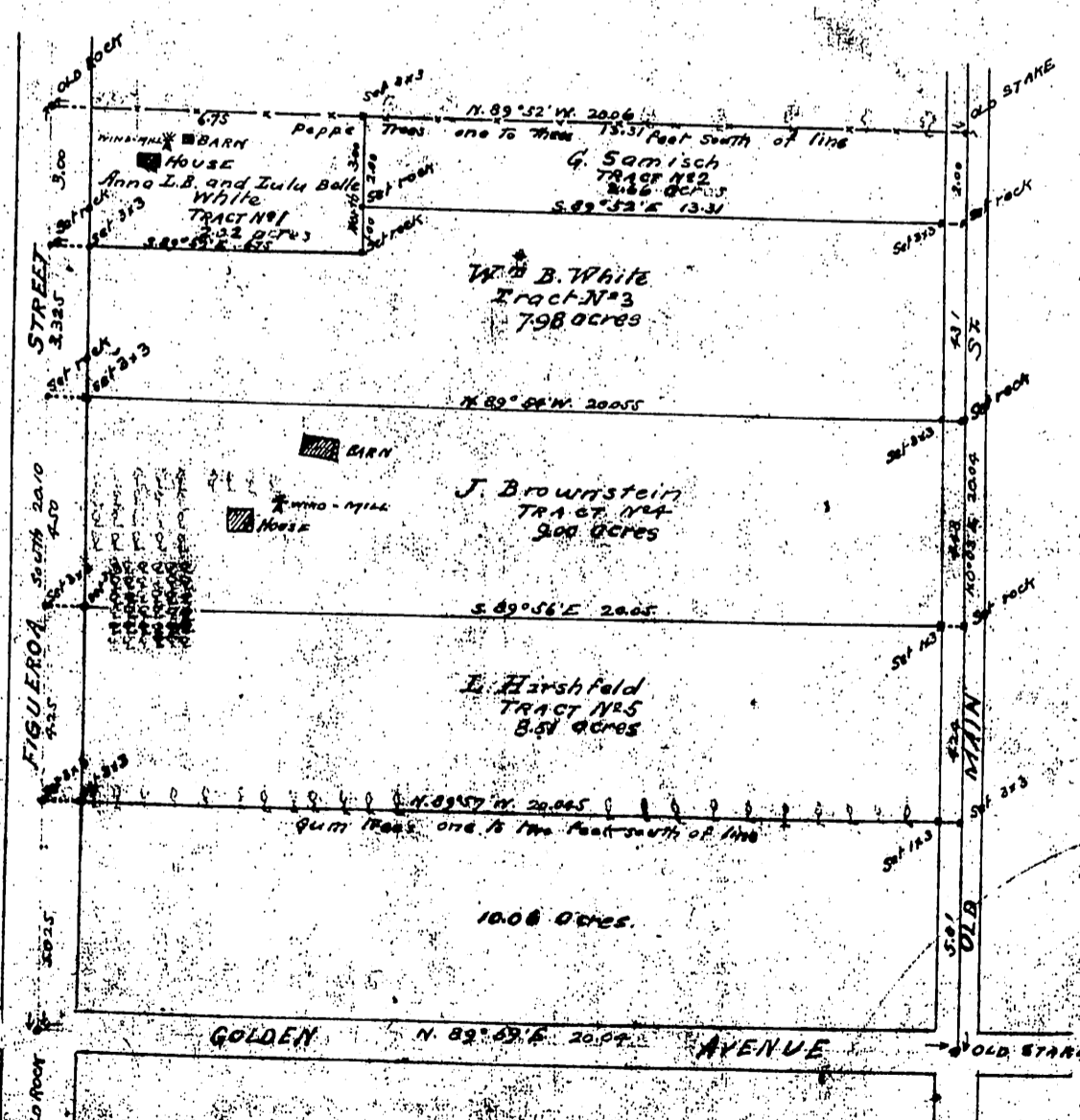
DECEMBER 13, 1892.

STATE OF CALIFORNIA }  
 COUNTY OF LOS ANGELES } SS.

I, T.H. Ward, County Clerk, and Ex-officio  
 Clerk of the Superior Court, do hereby certify the fore-  
 going to be a full, true and correct copy of the orig-  
 inal on file in my office, entered in Judgment Book  
 43, page 19. Witness my hand, and the seal of the Su-  
 perior Court, this 13<sup>th</sup> day of February 1893

T.H. Ward, County Clerk

By R.A. Marshall Deputy



Recorded Feb. 13<sup>th</sup> 1893, at 1<sup>st</sup> P.M.

at request of D. P. Hatch

For deed to City of N. 30. of Tr. No. 1. See D. 7-247