

DM 924-250

101

250

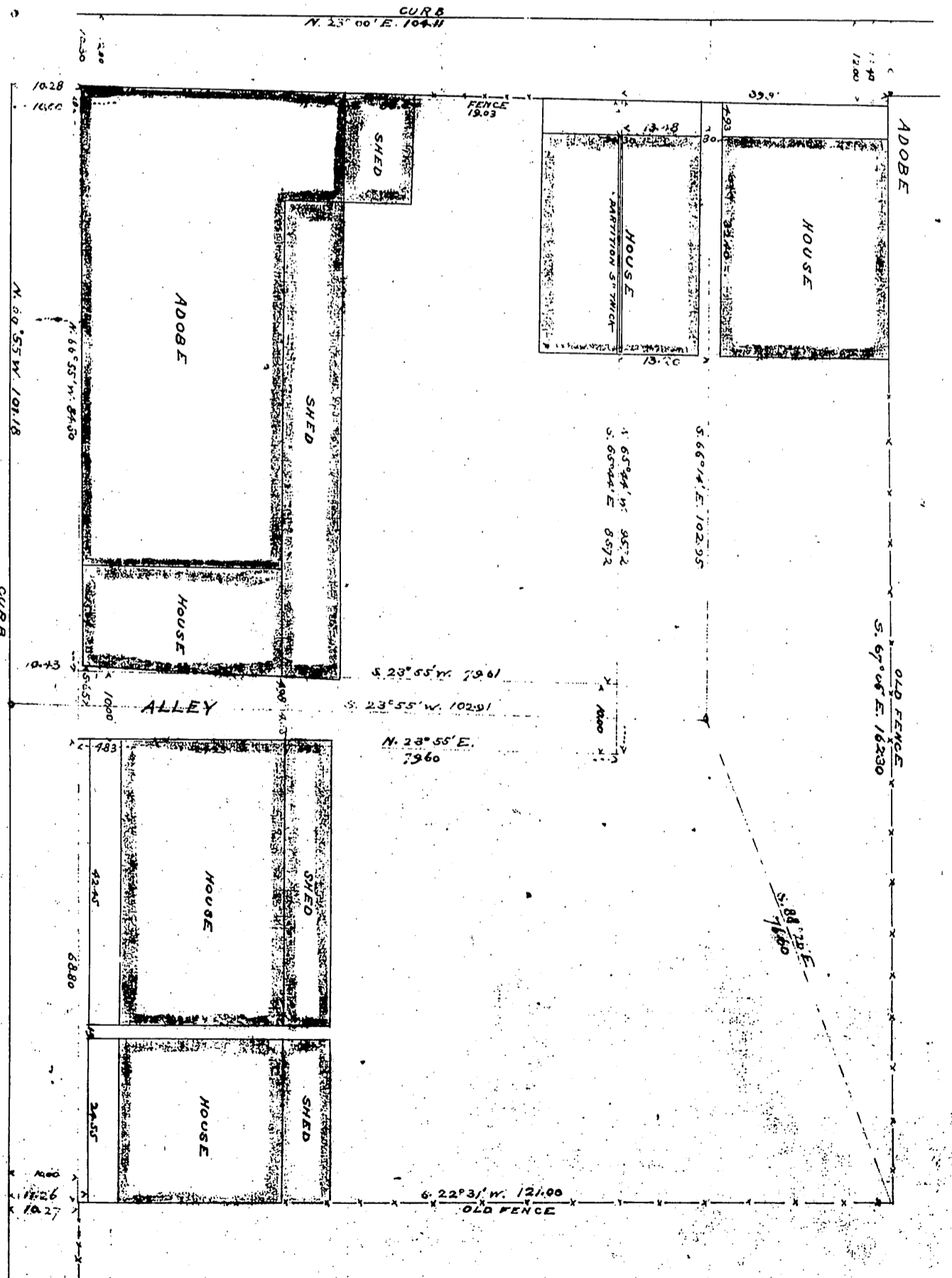
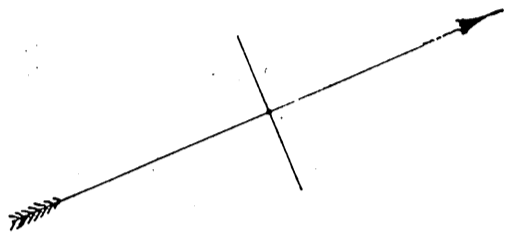
PLAT

SHOWING SURVEY OF LOT 1 BLOCK 34 ORDS SURVEY

MADE UNDER INSTRUCTIONS OF COMMISSIONER IN PARTITION, IN CASE NO. 20572, ANTONIO BEGON AGAINST MARIE BEGON, IN SUPERIOR COURT, LOS ANGELES Co., CAL.

Surveyed Apr. 17th 1894 by
E. G. Jones
SCALE: 1" = 20 FEET

CASTELAR ST.



ORD ST.

Recorded Jan. 1st 1894, at 2¹² P.M.

at request of Marble and Phibbs

DEEDS 924