

DM 944-107

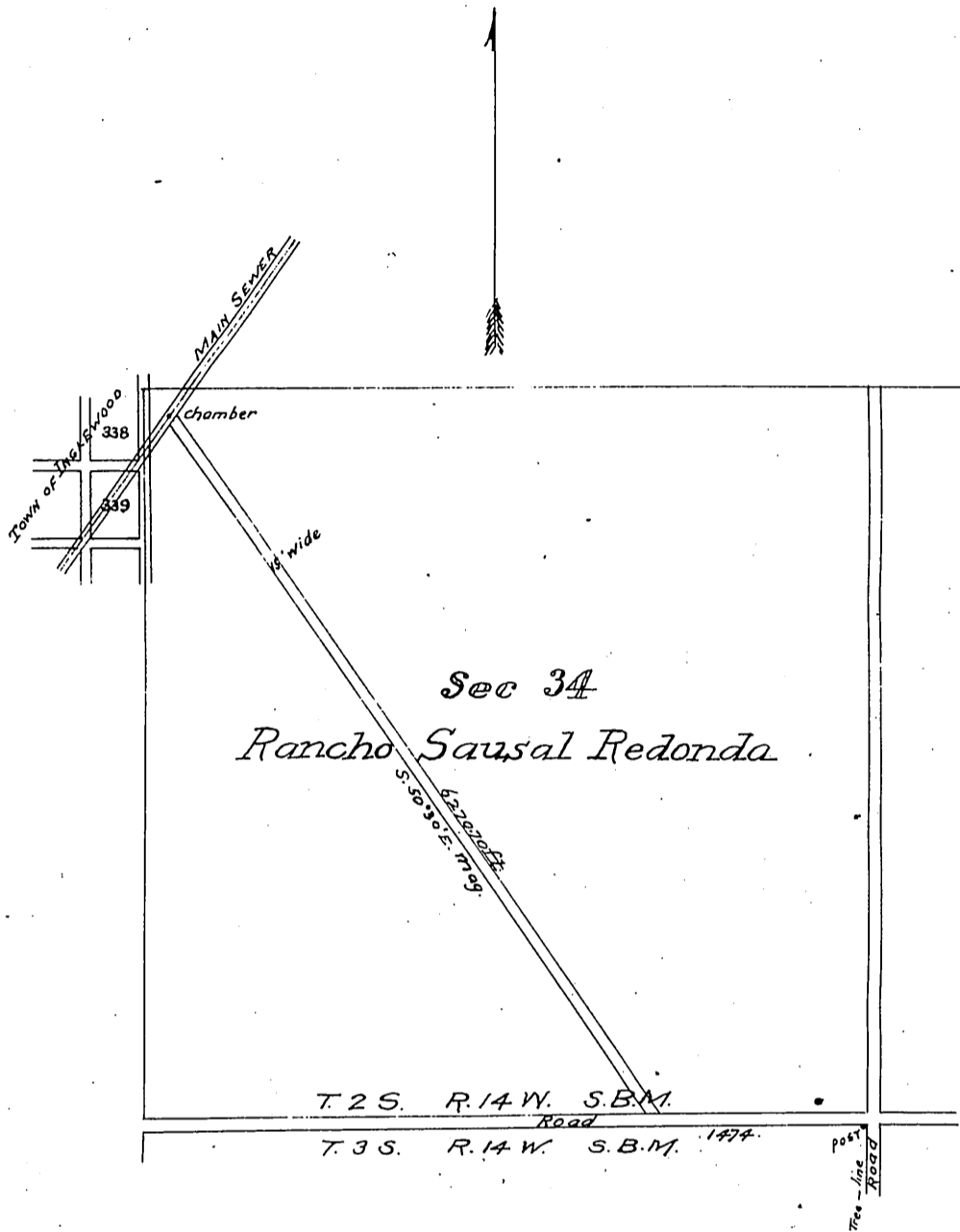
108

107  
83

# Plat

Showing a strip of land 15 feet wide deed to the City of Los Angeles by D. Freeman April 28<sup>th</sup> 1894,

SCALE 20 CH = 1 IN.



Sec 3

Sec 2

Location approved  
J. H. Dockweiler  
CITY ENGINEER

28-4-94

Recorded May 15<sup>th</sup> 1894, at 10<sup>55</sup> AM.  
at request of W. W. Howard.

*Ampld.  
D.F.*

DEEDS 944  
M  
938