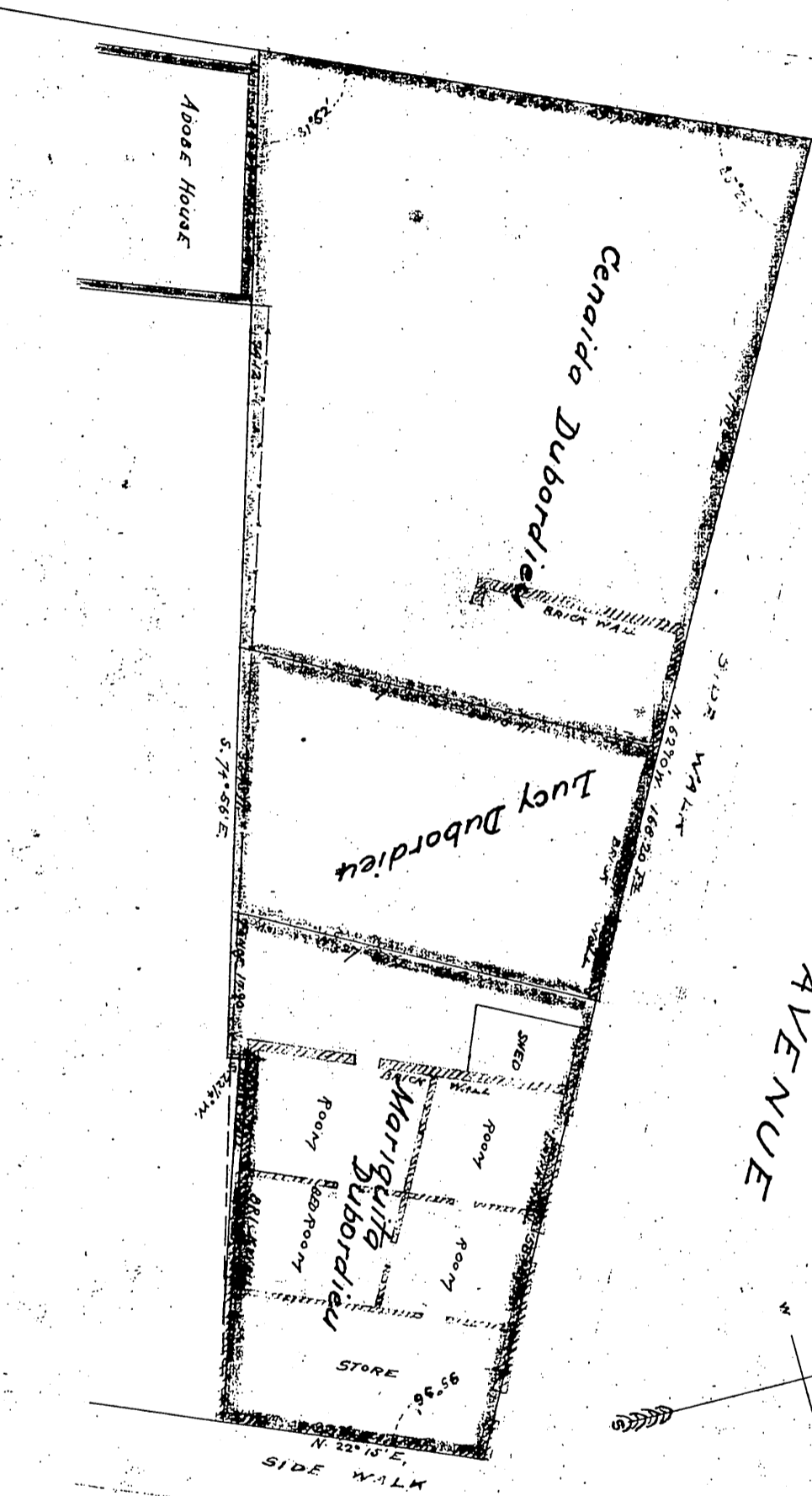


BUENA VISTA STREET



BELLEBUE AVENUE

NEW HIGH STREET

SCALE 10 FT. TO ONE INCH.

BOOK 268

Map showing partition of Lot of Land situated in the City of Los Angeles state of California, made by Jose A. Bernal sale referee under Interlocutory Decree dated March 17th 1894 in the suit of Emile Dubordieu et al Plaintiffs vs Mariquita Dubordieu et al Defendants Case No 18523 in Superior Court County of Los Angeles State of California as surveyed in March and April 1894 by Jose A. Bernal Surveyor and Sale Referee

EXHIBIT A

NEW HIGH STREET