

Recorded July 2<sup>nd</sup> 1894, at 1:53 PM.  
at request of Jas. D. Reymert  
(Scale reduced to 20' = 1")

UPPER MAIN STREET

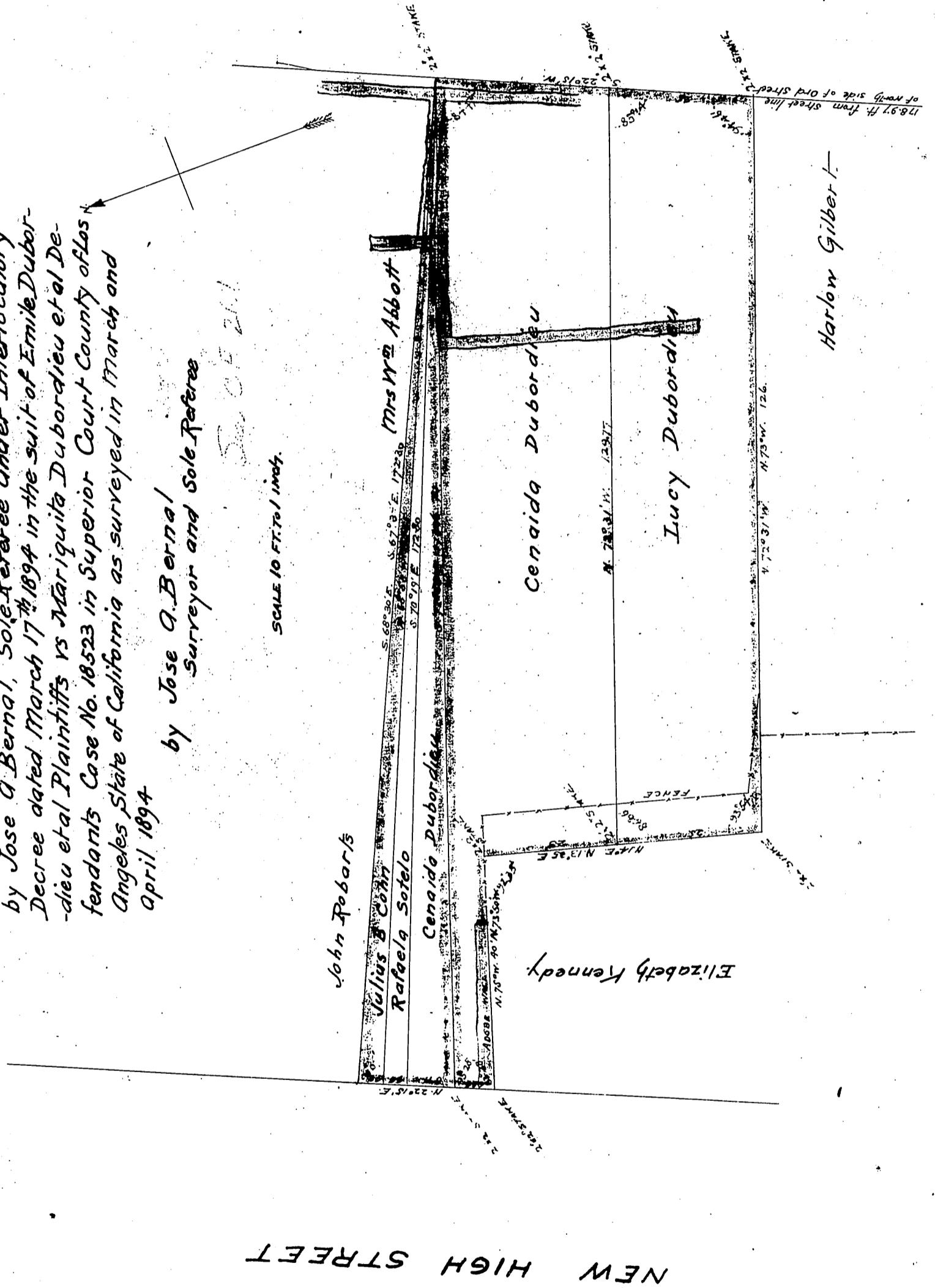
EXHIBIT B

Map showing partition of part of Lot 2 in Block 33  
Ords Survey of the City of Los Angeles California made  
by Jose A. Bernal, Sole Referee under Interlocutory  
Decree dated March 17<sup>th</sup> 1894 in the suit of Emile Dubor-  
-dieu et al Plaintiffs vs Mariquita Dubordieu et al De-  
-fendants Case No. 18523 in Superior Court County of Los  
Angeles State of California as surveyed in March and  
April 1894

by Jose A. Bernal  
Surveyor and Sole Referee

50 OF 211

SCALE 10 FT. TO 1 INCH.



Harlow Gilbert

NEW HIGH STREET