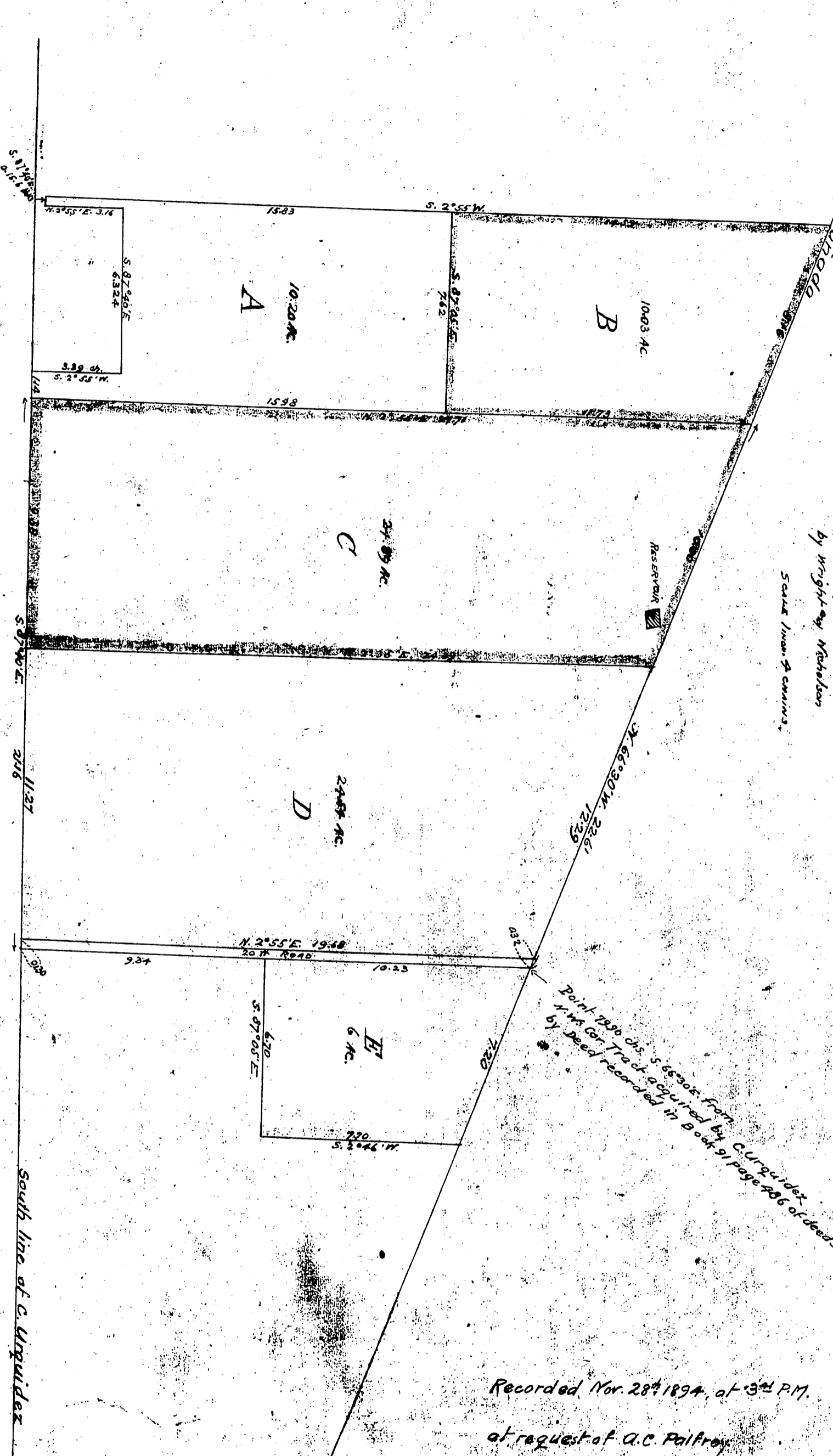


DM 979-54

125

54



Property of
 THOMPSON and PALFREY
 IN RANGE SAN RAFAEL
 Los ANGELES Co CAL.
 Surveyed Nov 1894
 by Wright & Nicholson
 Scale 1 inch = 40 chains.

Point 2890 dis. S. 66° 30' E. from C. Virgundes
 N. W. Cor. Tract acquired by C. Virgundes
 by deed recorded in Book 91 page 206 of deeds.

Recorded Nov. 28th 1894, at 3rd P.M.
 at request of A.C. Palfrey