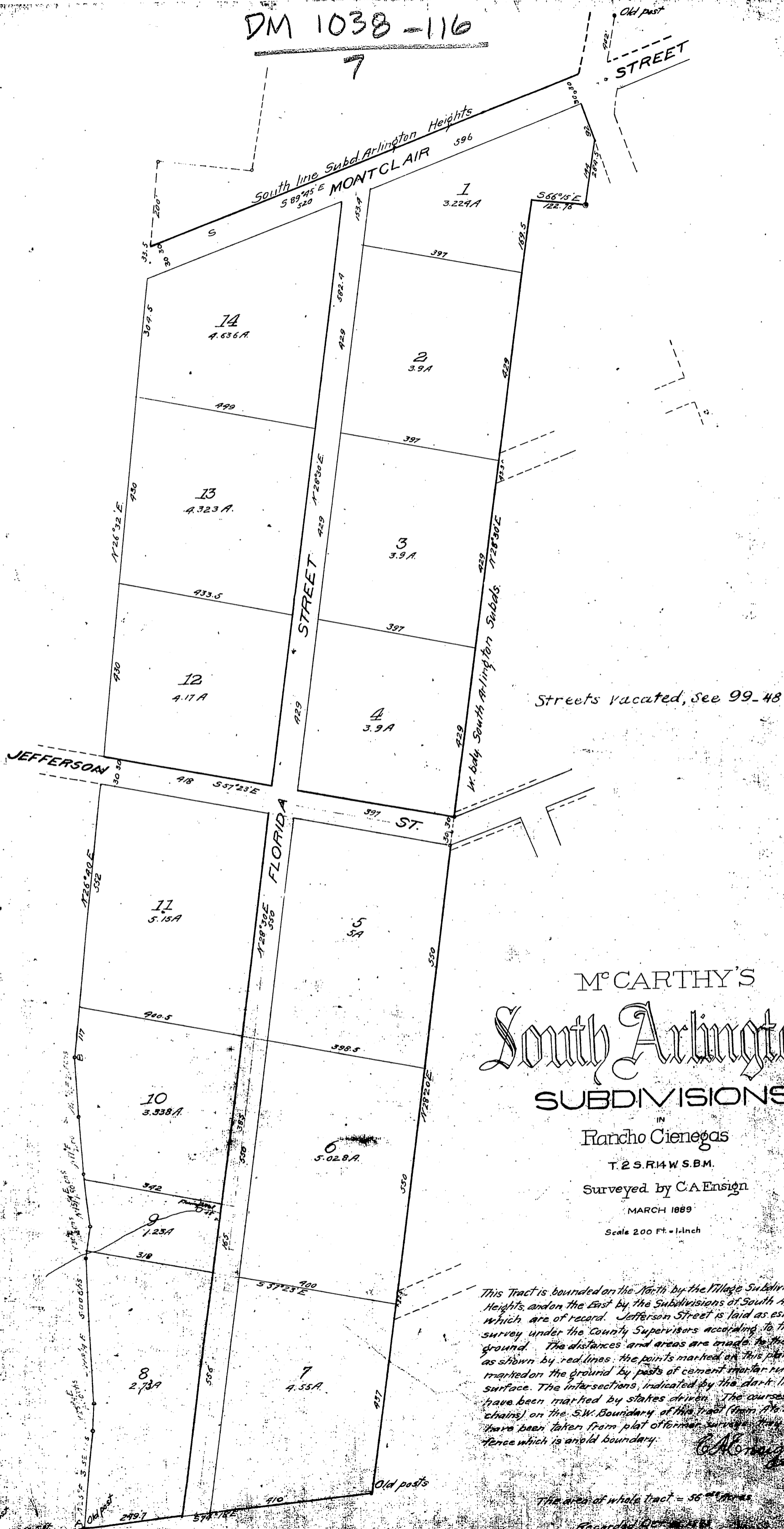


DM 1038-116

7



M<sup>c</sup>CARTHY'S  
 South Arlington  
 SUBDIVISIONS

IN  
 Rancho Cienegas  
 T. 2 S. R. 14 W. S. B. M.  
 Surveyed by C. A. Ensign  
 MARCH 1889  
 Scale 200 Ft. = 1-inch

This Tract is bounded on the North by the Village Subdivisions of Arlington Heights and on the East by the Subdivisions of South Arlington, plat of which are of record. Jefferson Street is laid as established by the survey under the County Supervisors according to the stakes on the ground. The distances and areas are made to the centers of streets as shown by red lines; the points marked on this plat indicate points marked on the ground by posts of cement mortar run deeply below the surface. The intersections, indicated by the dark lines of this plat, have been marked by stakes driven. The courses and distances (in chains) on the S.W. Boundary of this tract (from A to B) indicated in red, have been taken from plat of former survey, they bear a line and fence which is an old boundary.

C. A. Ensign  
 Surveyor

The area of whole tract = 56.44 acres

Recorded Dec 1889  
 as requested

D-1038