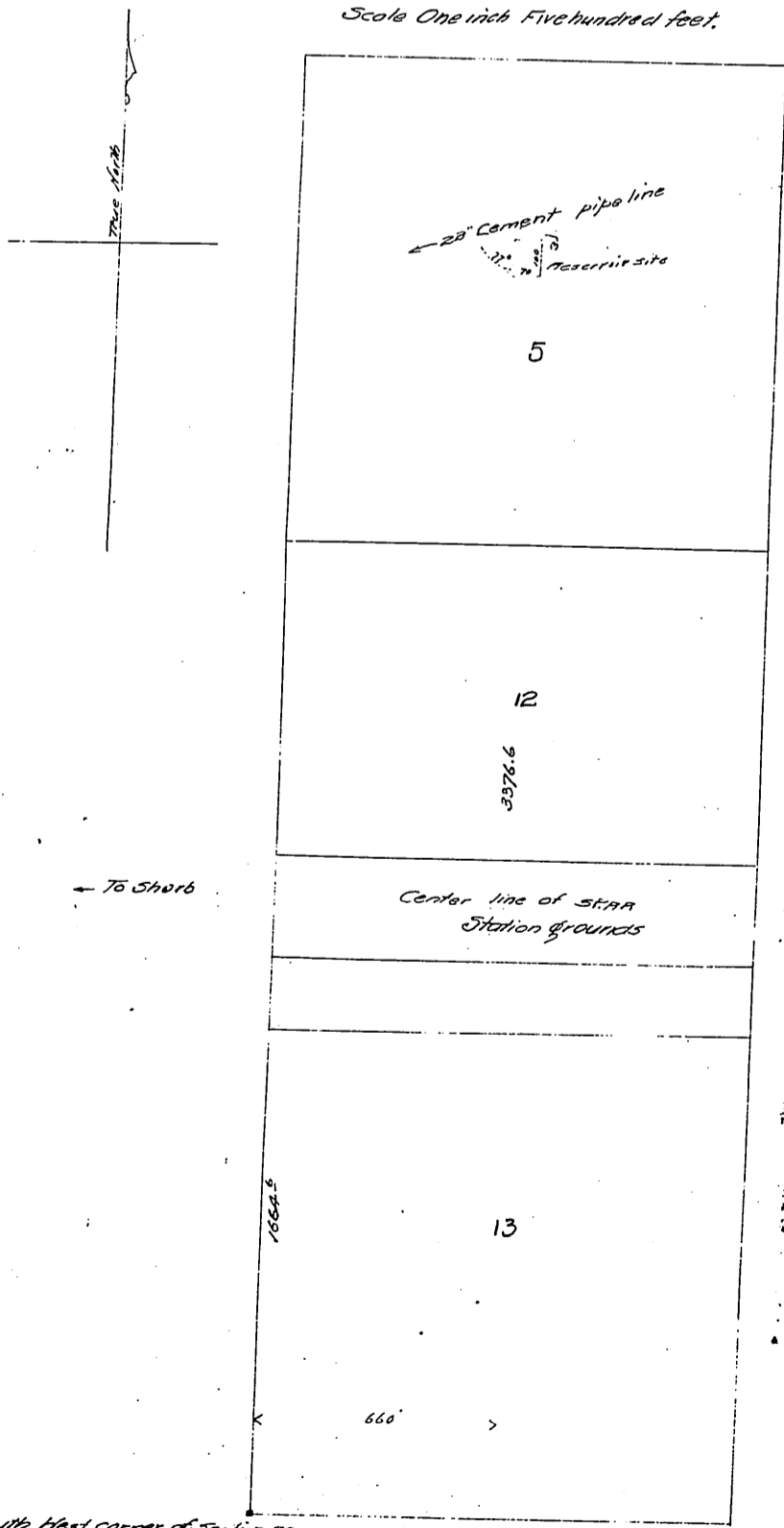


DM 1089-245

26

Plan showing  
 Lots 5, 12 and 13 of Section 29  
 T1N R10W - 5BB and M.  
 with Reservoir site of  
 Southern Pacific Railroad of California  
 shown in blue on West half of Lot 5  
 April 27<sup>th</sup> 1896  
 Scale One inch Five hundred feet.

For lots 5 & 12 for Fish Canyon Road - Holmes Road, E:13-108, O.R. 14466-113



South West corner of Section 29.

Recorded Apr 30, 1896

D-1089