

39th Street

from Vermont Ave. to Rosedale Ave.

As Surveyed under Instructions from

Hon Board of Supervisors

Scale 100 ft. = 1 in. In April 1896
by E.T. Wright, Co. Sur.

Street 70 ft. Wide.

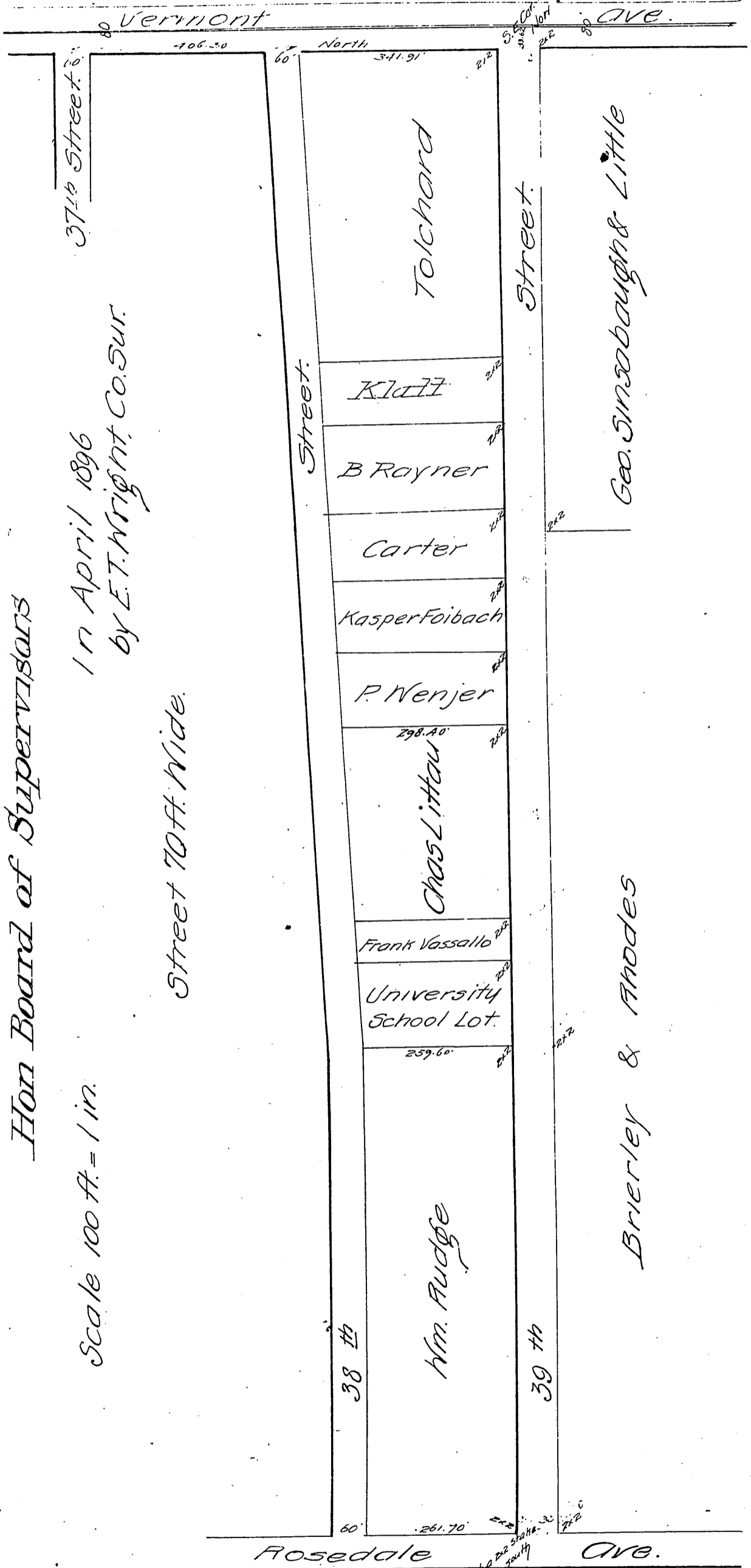
Signed by

- Theo. W. Tolchard
- Christina E. Tolchard
- B.T. Reynolds
- J.E. "
- Wm. Carter
- Janette Carter
- C. Forbeck
- Ms. E. Forbeck
- Elizabeth Wenger
- Philipp "
- School Trustees.
- Madolena S. Vassallo
- Francisco Vassallo
- Wm. Rudge

To

L.A. Co.

Recorded at request of County Clerk May 21 1896.



Curio