

DM 1152-92

58

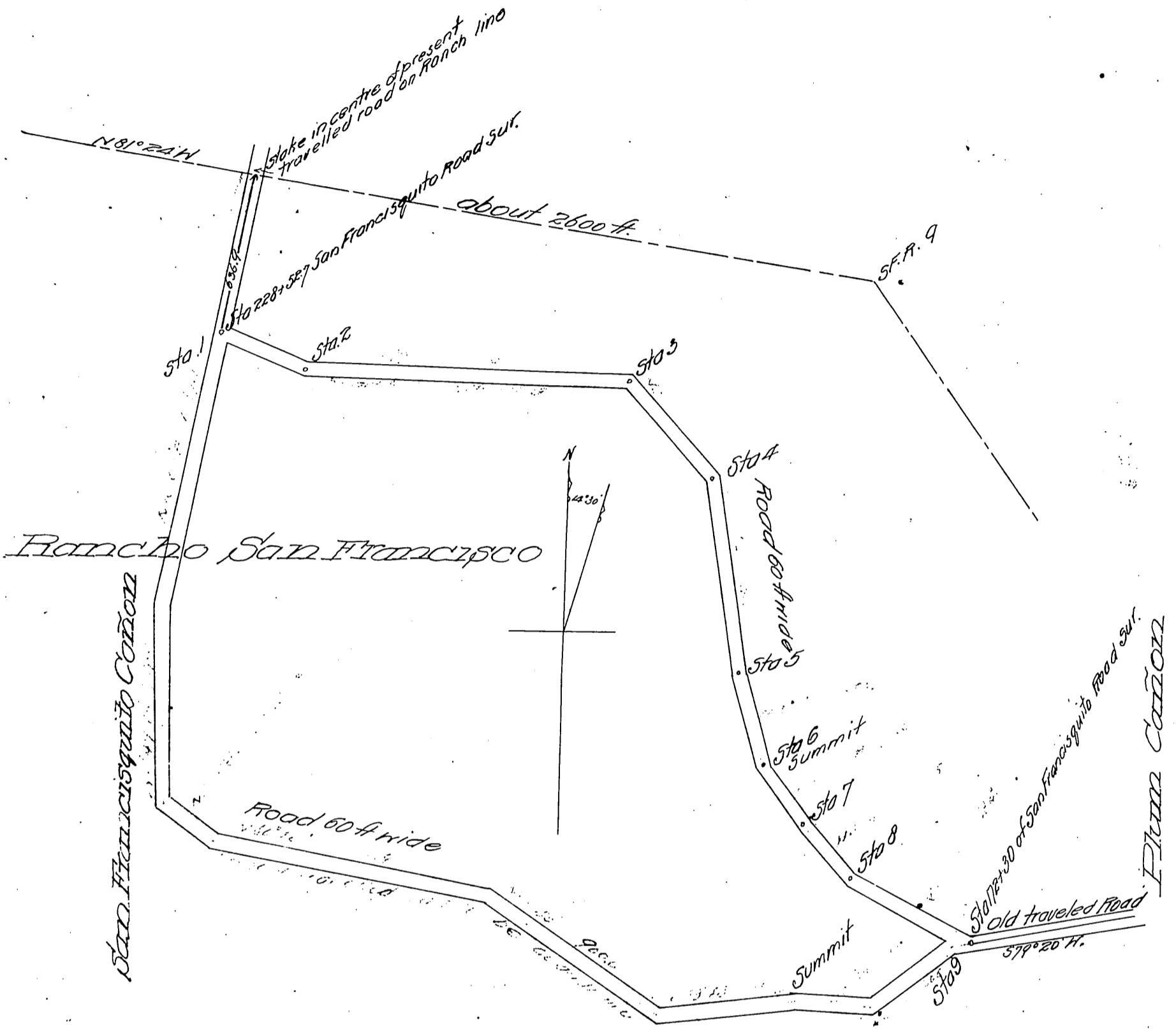
PORTION OF

San Francisquito Canon Road

Surveyed March 1896

E. T. Wright Co. Sur W. B. Nicholson Dep.

Scale 500 ft = 1 in



The Merhall Land & Farming Co.
to
Los Angeles County.

Recorded at request of Co. Clerk Feb 23, 1897.

Vacated - D: 46-137 O.R. 9546-18

DM-1152